

Converting Colors

YUV(112.0330, 0.4767, 80.6551)

Have a look what the booklet for
YUV(112.0330, 0.4767, 80.6551)
contains.

YUV(112.0330, 0.4767, 80.6551)	3
<i>Conversions</i>	4
<i>Details</i>	6
<i>Harmonies</i>	12
<i>Previews</i>	24
<i>Color Blindness Simulation</i>	28
<i>CSS Examples</i>	31

Color

**YUV(112.0330, 0.4767,
80.6551)**

Conversions

Conversions Part 1

Format	Color
Hex	CC4171
RGB	204, 65, 113
RGB Percent	80%, 25%, 44%
CMY	0.2000, 0.7451, 0.5569
CMYK	0.00, 0.68, 0.45, 0.20
HSL	339°, 58%, 53%
HSV	339°, 68%, 80%
XYZ	29.7728, 17.8102, 17.4913
YIQ	112.0330, 67.4360, 44.3960

Conversions

Conversions Part 2

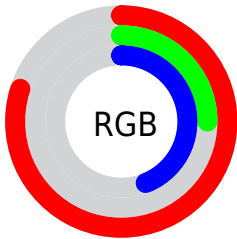
Format	Color
R_{YB}	204, 65, 113
Decimal	13386097
CIE Lab	49.27, 58.26, 3.80
CIE LCh	49, 58.380, 3.736
Yxy	17.8102, 0.4575, 0.2737
Android (android.graphics.Color)	4291576177 (0xFFCC4171)
YUV	112.0330, 0.4767, 80.6551
Hunter-Lab	42.2022, 52.0744, 4.9679

Details

The YUV color **112.0330, 0.4767, 80.6551** is a dark color, and the websafe version is hex **CC3366**. The color can be described as dark muted rose. A complement of this color would be **156.9670, -0.4767, -80.6551**, and the grayscale version is **112.0000, 0.0000, 0.0000**.

A 20% lighter version of the original color is **166.0820, -0.5334, 77.9811**, and **50.7650, 7.0179, 82.6441** is the 20% darker color. If you saturate the color by 10%, you get **98.8110, 0.5862, 92.2508**, and if you desaturate by 10%, it is **125.2550, 0.3673, 69.0594**.

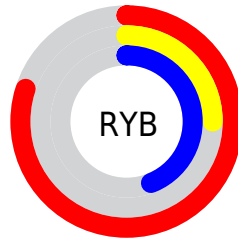
Distribution



Red (80%)

Green (25%)

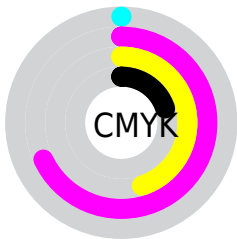
Blue (44%)



Red (80%)

Yellow (25%)

Blue (44%)

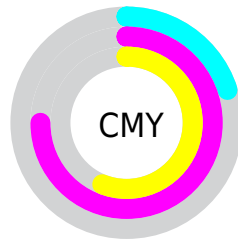


Cyan (0%)

Magenta (68%)

Yellow (45%)

Black (20%)



Cyan (20%)

Magenta (75%)

Yellow (56%)

Brightness & Saturation Gradients

These gradients show how the YUV color 112.0330, 0.4767, 80.6551 changes by changing the brightness by 10 percent. The first figure shows a shift by +10% for each color and the second figure -10%.

Similar to the brightness gradients but the following saturation gradients show a change of the YUV color 112.0330, 0.4767, 80.6551 by changing the saturation by 10% instead.

■ 112.0330, 0.4767,
80.6551

■ 112.0330, 0.4767,
80.6551

■ 255.0000, 0.0000,
0.0000

■ 81.5430, 3.6763,
81.0848

■ 166.0820, -0.5334,
77.9811

■ 50.7650, 7.0179,
82.6441

■ 186.1830, 2.8678,
60.3525

■ 39.7000, 2.1199,
66.9151

■ 205.6970, 6.5584,
43.2387

■ 28.7490, -2.3413,
51.0861

■ 226.0260, 10.8332,
25.4102

■ 18.5810, -7.6814,
37.2015

■ 243.8470, 5.4984,
9.7812

■ 7.5890, -3.2484,
15.2694

■ 0.0000, 0.0000,

0.0000

■ 112.0330, 0.4767,
80.6551

■ 112.0330, 0.4767,
80.6551

■ 98.8110, 0.5862,
92.2508

■ 125.2550, 0.3673,
69.0594

■ 84.8880, 0.5482,
104.4612

■ 139.1780, 0.4052,
56.8489

■ 71.6660, 0.6577,
116.0569

■ 152.4000, 0.2958,
45.2532

■ 68.9760, 0.5048,
118.4160

■ 166.2090, -0.1030,
33.1427

■ 179.5450, 0.2243,
21.4470

■ 192.7670, 0.1149,
9.8513

■ 206.5760, -0.2840,
-2.2592

■ 219.9120, 0.0434,
-13.9548

■ 233.7210, -0.3555,
-26.0653

Harmonies

Analogous

The Analogous color harmony consists of three colors that are next to each other on the color wheel.



118.3730, 21.5081, 54.9239



112.0330, 0.4767, 80.6551



111.8220, -23.0832, 77.3321

Triad

The Triadic color harmony groups three colors that are evenly spaced from another and form a triangle on the color wheel.



112.0330, 0.4767, 80.6551



103.9340, -40.3935, -17.4821



102.1420, 51.2020, -89.5785

Complementary

The Complementary color scheme is a pair of colors which are on the opposite of each other on the color wheel.



112.0330, 0.4767, 80.6551



156.9670, -0.4767, -80.6551

Split Complementary

Split-complementary colors differ from the complementary color scheme. The scheme consists of three colors, the original color and two neighbors of the complement color.



101.0870, 34.4671, -88.6533



112.0330, 0.4767, 80.6551



88.5130, -8.6339, -77.6259

Square

The Square scheme is like the rectangle color scheme, but the four colors are evenly spaced on the color wheel.



112.0330, 0.4767, 80.6551



109.0440, -53.7587, 22.7634



96.0880, 12.7746, -84.2692



95.6510, 59.3321, -83.8859

Rectangle

The Rectangle color scheme consists of four colors that form a rectangle on the color wheel.



112.0330, 0.4767, 80.6551



112.8360, -37.8801, 63.2878



96.0880, 12.7746, -84.2692



102.1760, 46.2552, -89.6084

Sweetspot

The Sweet Spot groups the original color and five complimentary colors.



112.0330, 0.4767, 80.6551



221.3010, 0.3446, 29.5540



107.7560, 47.4483, 41.4330



107.4090, -0.2016, 18.0583



0.0000, 0.0000, 0.0000



128.0000, 0.0000, 0.0000

Same Dimension

The Same Dimension uses a secret algorithm to generate beautiful new colors.



112.0330, 0.4767, 80.6551



116.6990, 0.6414, 121.2900



118.8880, -26.5668, 74.6432



95.3320, -0.1637, 5.8478



56.1320, 0.4279, 96.3542



12.8440, 0.0769, 22.0618

Inverse Universe

The Inverse Universe completely reimagines the original color for something new.



112.0330, 0.4767, 80.6551



116.6990, 0.6414, 121.2900



150.1120, 26.5668, -74.6432



95.3320, -0.1637, 5.8478



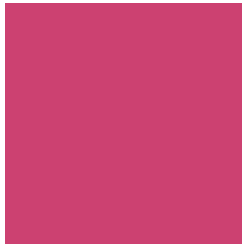
56.1320, 0.4279, 96.3542



12.8440, 0.0769, 22.0618

Previews

White Background



This preview shows how the YUV color 112.0330, 0.4767, 80.6551 looks on a white background.

Color Contrast Check

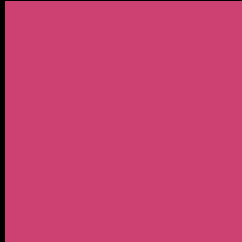
Large Text (above 18pt) WCAG AA ✓ Pass

Any Text WCAG AA ✓ Pass

Large Text (above 18pt) WCAG AAA ✓ Pass

Any Text WCAG AAA × Fail

Black Background



This preview shows how the YUV color 112.0330, 0.4767, 80.6551 looks on a black background.

Color Contrast Check

Large Text (above 18pt) WCAG AA ✓ Pass

Any Text WCAG AA ✓ Pass

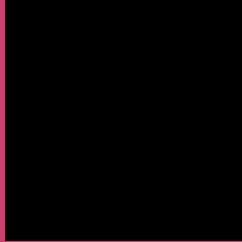
Large Text (above 18pt) WCAG AAA ✓ Pass

Any Text WCAG AAA × Fail

If you want to check with other color combinations, try the [Color Contrast Checker](#).

YUV 112.0330, 0.4767, 80.6551

Background



This preview shows how black text looks on a background with the YUV color 112.0330, 0.4767, 80.6551.

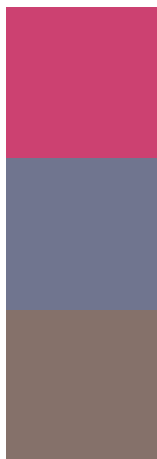


This preview shows how white text looks on a background with the YUV color 112.0330, 0.4767,

Color Blindness Simulation

Color vision deficiency is a very complex topic, and I could not describe the different causes any better than Wikipedia does, so if you want to learn more, you should check out their [article about color blindness](#).

Dichromacy



Original Color

112.0330, 0.4767, 80.6551

Protanopia

118.4690, 12.0938, -5.6733

Deuteranopia

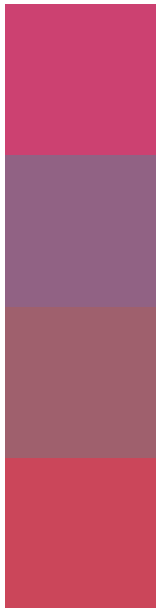
118.1820, -6.0057, 12.9954



Tritanopia

112.0270, -17.2683, 78.9063

Trichromacy



Original Color

112.0330, 0.4767, 80.6551

Protanomaly

115.9290, 7.9230, 25.4953

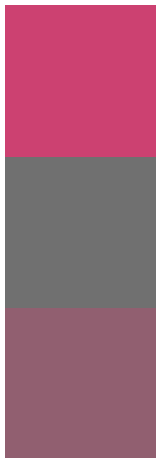
Deuteranomaly

116.3190, -3.6083, 37.4312

Tritanomaly

112.0470, -10.8692, 79.7658

Monochromacy



Original Color

112.0330, 0.4767, 80.6551

Achromatopsia

112.0000, 0.0000, 0.0000

Achromatomaly

111.8880, 0.0552, 29.0392

CSS Examples

Text

The CSS property to change the color of the text to YUV 112.0330, 0.4767, 80.6551 is called "color". The color property can be set on classes, ids or directly on the HTML element.

This example shows how text in the color `rgb(204, 65, 113)` looks like.

```
.text, #text, p{  
    color:rgb(204, 65, 113)  
}
```

If you want to add a text shadow in that color use the text-shadow property, you can generate a text shadow directly with our [CSS Text Shadow Generator](#).

Here you see how black text with a 4 pixel rgb(204, 65, 113) colored shadow looks like.

```
.shadow{ text-shadow: 4px 4px 2px rgb(204, 65, 113) }
```

Border

The CSS property to change the border of an element to YUV 112.0330, 0.4767, 80.6551 is called "border". The border property can be set on classes, ids or directly on the HTML element.

This example shows the color as border, it can be applied via the CSS property "border" or "border-color".

```
.border, #border, table{ border:4px solid rgb(204, 65, 113) }
```


If only the border color should be changed use the property `border-color`.

```
.border{ border-color:rgb(204, 65, 113) }
```

If you want to add a box shadow in that color use:

Here you see how a box with a 4 pixel `rgb(204, 65, 113)` colored shadow looks like.

```
.boxshadow{ -moz-box-shadow:4px 4px 4px  
4px rgb(204, 65, 113); -webkit-box-  
shadow:4px 4px 4px 4px rgb(204, 65, 113);  
box-shadow:4px 4px 4px 4px rgb(204, 65,  
113) }
```

Background

The CSS property to change the background color of an element to YUV 112.0330, 0.4767, 80.6551 is called "background". The background property can be set on classes, ids or directly on the HTML element.

```
.background, #background, body{  
background: rgb(204, 65, 113) }
```

If only the background color should be changed can be used:

```
.background{ background-color: rgb(204, 65,  
113) }
```

This example shows the color as background, it is applied via the CSS property "background".

To optimize and compress your CSS code, you can use our [online CSS compressor and optimizer](#) based on csstidy. If you want to create a linear or radial gradient as background or border, check our [CSS Gradient Generator](#).

Hey! You found this booklet interesting? Support Converting Colors with the new Membership Option!

The pro membership hides all ads, plus gives you double the colors in the color bucket, and more awesome pro features!

[Learn more, Memberships starting at \\$2.50/m!](#)

**Follow me
on Twitter!**

@ConvertingColor