

Converting Colors

YUV(112.7160, -22.5380,
42.3451)

Have a look what the booklet for
YUV(112.7160, -22.5380, 42.3451)
contains.

YUV(112.7160, -22.5380, 42.3451)	3
<i>Conversions</i>	4
<i>Details</i>	6
<i>Harmonies</i>	12
<i>Previews</i>	24
<i>Color Blindness Simulation</i>	28
<i>CSS Examples</i>	31

Color

**YUV(112.7160, -22.5380,
42.3451)**

Conversions

Conversions Part 1

Format	Color
Hex	A16143
RGB	161, 97, 67
RGB Percent	63%, 38%, 26%
CMY	0.3686, 0.6196, 0.7373
CMYK	0.00, 0.40, 0.58, 0.37
HSL	19°, 41%, 45%
HSV	19°, 58%, 63%
XYZ	19.9858, 16.5317, 7.4478
YIQ	112.7160, 47.7740, 4.2380

Conversions

Conversions Part 2

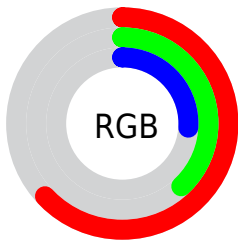
Format	Color
R_{YB}	161, 111, 67
Decimal	10576195
CIE _{Lab}	47.66, 22.91, 27.97
CIE _{LCh}	48, 36.156, 50.684
Yxy	16.5317, 0.4546, 0.3760
Android (android.graphics.Color)	4288766275 (0xFFA16143)
YUV	112.7160, -22.5380, 42.3451
Hunter-Lab	40.6592, 16.5869, 17.6010

Details

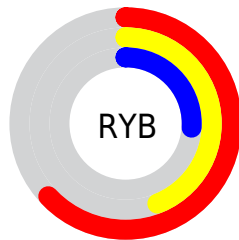
The YUV color **112.7160, -22.5380, 42.3451** is a dark color, and the websafe version is hex **996633**. A complement of this color would be **115.2840, 22.5380, -42.3451**, and the grayscale version is **113.0000, 0.0000, 0.0000**.

A 20% lighter version of the original color is **165.5810, -24.4434, 46.8485**, and **63.3670, -19.9009, 36.5121** is the 20% darker color. If you saturate the color by 10%, you get **104.4350, -26.3435, 49.6075**, and if you desaturate by 10%, it is **120.9970, -18.7325, 35.0826**.

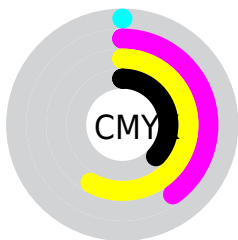
Distribution



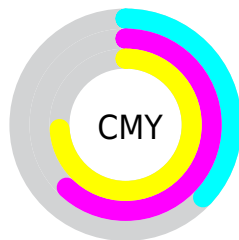
- Red (63%)
- Green (38%)
- Blue (26%)



- Red (63%)
- Yellow (44%)
- Blue (26%)



- Cyan (0%)
- Magenta (40%)
- Yellow (58%)
- Black (37%)



- Cyan (37%)
- Magenta (62%)
- Yellow (74%)

Brightness & Saturation Gradients

These gradients show how the YUV color 112.7160, -22.5380, 42.3451 changes by changing the brightness by 10 percent. The first figure shows a shift by +10% for each color and the second figure -10%.

Similar to the brightness gradients but the following saturation gradients show a change of the YUV color 112.7160, -22.5380, 42.3451 by changing the saturation by 10% instead.

■ 112.7160,
-22.5380, 42.3451

■ 112.7160,
-22.5380, 42.3451

■ 255.0000, 0.0000,
0.0000

■ 87.6340, -21.5116,
39.7860

■ 165.5810,
-24.4434, 46.8485

■ 63.3670, -19.9009,
36.5121

■ 192.9510,
-25.6118, 48.2780

■ 39.4700, -19.4587,
34.6678

■ 214.5580,
-22.9531, 35.4676

■ 18.7820, -9.2595,
30.0092

■ 234.0720,
-19.2625, 18.3539

■ 7.8880, -3.3958,
15.8842

■ 251.3520,
-13.9775, 3.1993

■ 0.0000, 0.0000,
0.0000

254.6580, -1.3104,

0.2999

■ 112.7160,
-22.5380, 42.3451

■ 112.7160,
-22.5380, 42.3451

■ 104.4350,
-26.3435, 49.6075

■ 120.9970,
-18.7325, 35.0826

■ 96.1540, -30.1489,
56.8699

■ 129.2780,
-14.9271, 27.8202

■ 87.8730, -33.9544,
64.1324

■ 137.5590,
-11.1216, 20.5578

■ 79.5920, -37.7599,
71.3948

■ 145.8400, -7.3161,
13.2953

■ 78.0760, -38.4915,
72.7243

■ 154.1210, -3.5107,
6.0329

■ 162.5160, 0.7316,
-1.3295

■ 170.7970, 4.5371,
-8.5920

■ 179.0780, 8.3425,
-15.8544

■ 187.3590, 12.1480,
-23.1168

Harmonies

Analogous

The Analogous color harmony consists of three colors that are next to each other on the color wheel.



113.9740, -10.3402, 50.0118



112.7160, -22.5380, 42.3451



111.1840, -29.1777, 25.2716

Triad

The Triadic color harmony groups three colors that are evenly spaced from another and form a triangle on the color wheel.



112.7160, -22.5380, 42.3451



91.5480, 5.1528, -66.2556



113.2630, 27.9713, -11.6317

Complementary

The Complementary color scheme is a pair of colors which are on the opposite of each other on the color wheel.



112.7160, -22.5380, 42.3451



115.2840, 22.5380, -42.3451

Split Complementary

Split-complementary colors differ from the complementary color scheme. The scheme consists of three colors, the original color and two neighbors of the complement color.



99.1430, 36.4115, -58.8844



112.7160, -22.5380, 42.3451



90.9990, 21.1995, -79.8061

Square

The Square scheme is like the rectangle color scheme, but the four colors are evenly spaced on the color wheel.



112.7160, -22.5380, 42.3451



104.1220, -15.3431, -25.5400



92.0880, 32.9876, -80.7612



116.7250, 17.3906, 22.1662

Rectangle

The Rectangle color scheme consists of four colors that form a rectangle on the color wheel.



112.7160, -22.5380, 42.3451



109.4980, -28.8395, 10.0873



92.0880, 32.9876, -80.7612



110.5710, 30.7775, -25.0568

Sweetspot

The Sweet Spot groups the original color and five complimentary colors.



112.7160, -22.5380, 42.3451



189.4060, -9.0742, 17.1839



102.4020, 14.0988, 51.3904



92.9860, -5.4161, 10.5363



232.0000, 0.0000, 0.0000



105.0000, 0.0000, 0.0000

Same Dimension

The Same Dimension uses a secret algorithm to generate beautiful new colors.



112.7160, -22.5380, 42.3451



133.6560, -34.8334, 66.0767



140.3050, -36.1394, 18.1495



77.4520, -2.1948, 3.9886



70.3570, -34.6860, 65.4619



8.9040, -4.3897, 7.9772

Inverse Universe

The Inverse Universe completely reimagines the original color for something new.



115.2840, 22.5380, -42.3451



137.7570, 35.1228, -65.5619



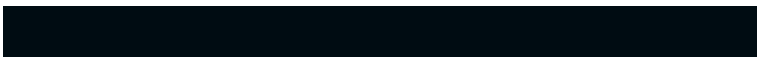
87.6950, 36.1394, -18.1495



77.5480, 2.1948, -3.9886



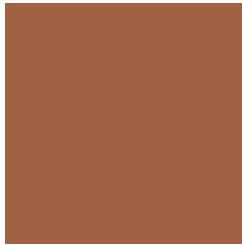
74.6430, 34.6860, -65.4619



9.0960, 4.3897, -7.9772

Previews

White Background



This preview shows how the YUV color 112.7160, -22.5380, 42.3451 looks on a white background.

Color Contrast Check

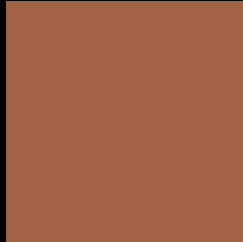
Large Text (above 18pt) WCAG AA ✓ Pass

Any Text WCAG AA ✓ Pass

Large Text (above 18pt) WCAG AAA ✓ Pass

Any Text WCAG AAA × Fail

Black Background



This preview shows how the YUV color 112.7160, -22.5380, 42.3451 looks on a black background.

Color Contrast Check

Large Text (above 18pt) WCAG AA ✓ Pass

Any Text WCAG AA × Fail

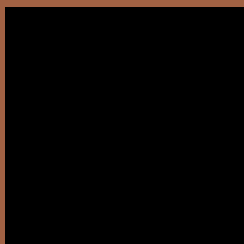
Large Text (above 18pt) WCAG AAA × Fail

Any Text WCAG AAA × Fail

If you want to check with other color combinations, try the [Color Contrast Checker](#).

YUV 112.7160, -22.5380, 42.3451

Background



This preview shows how black text looks on a background with the YUV color 112.7160, -22.5380, 42.3451.



This preview shows how white text looks on a background with the YUV color 112.7160, -22.5380,

Color Blindness Simulation

Color vision deficiency is a very complex topic, and I could not describe the different causes any better than Wikipedia does, so if you want to learn more, you should check out their [article about color blindness](#).

Dichromacy



Original Color

112.7160, -22.5380, 42.3451

Protanopia

112.0170, -19.2354, 9.6321

Deuteranopia

112.0680, -23.2045, 22.7424



Tritanopia

114.7280, -7.2609, 42.3345

Trichromacy



Original Color

112.7160, -22.5380, 42.3451

Protanomaly

112.4530, -20.4363, 21.5277

Deuteranomaly

112.2260, -22.7894, 29.6198

Tritanomaly

113.6480, -12.6445, 42.4047

Monochromacy



Original Color

112.7160, -22.5380, 42.3451

Achromatopsia

113.0000, 0.0000, 0.0000

Achromatomaly

112.6230, -8.1951, 15.2396

CSS Examples

Text

The CSS property to change the color of the text to YUV 112.7160, -22.5380, 42.3451 is called "color". The color property can be set on classes, ids or directly on the HTML element.

This example shows how text in the color `rgb(161, 97, 67)` looks like.

```
.text, #text, p{  
    color:rgb(161, 97, 67)  
}
```

If you want to add a text shadow in that color use the text-shadow property, you can generate a text shadow directly with our [CSS Text Shadow Generator](#).

Here you see how black text with a 4 pixel rgb(161, 97, 67) colored shadow looks like.

```
.shadow{ text-shadow: 4px 4px 2px rgb(161, 97, 67) }
```

Border

The CSS property to change the border of an element to YUV 112.7160, -22.5380, 42.3451 is called "border".

The border property can be set on classes, ids or directly on the HTML element.

This example shows the color as border, it can be applied via the CSS property "border" or "border-color".

```
.border, #border, table{ border:4px solid rgb(161, 97, 67) }
```


If only the border color should be changed use the property `border-color`.

```
.border{ border-color:rgb(161, 97, 67) }
```

If you want to add a box shadow in that color use:

Here you see how a box with a 4 pixel `rgb(161, 97, 67)` colored shadow looks like.

```
.boxshadow{ -moz-box-shadow:4px 4px 4px  
4px rgb(161, 97, 67); -webkit-box-  
shadow:4px 4px 4px 4px rgb(161, 97, 67);  
box-shadow:4px 4px 4px 4px rgb(161, 97,  
67) }
```

Background

The CSS property to change the background color of an element to YUV 112.7160, -22.5380, 42.3451 is called "background". The background property can be set on classes, ids or directly on the HTML element.

```
.background, #background, body{  
background: rgb(161, 97, 67) }
```

If only the background color should be changed can be used:

```
.background{ background-color: rgb(161, 97,  
67) }
```

This example shows the color as background, it is applied via the CSS property "background".

To optimize and compress your CSS code, you can use our [online CSS compressor and optimizer](#) based on csstidy. If you want to create a linear or radial gradient as background or border, check our [CSS Gradient Generator](#).

Hey! You found this booklet interesting? Support Converting Colors with the new Membership Option!

The pro membership hides all ads, plus gives you double the colors in the color bucket, and more awesome pro features!

[Learn more, Memberships starting at \\$2.50/m!](#)

**Follow me
on Twitter!**

@ConvertingColor