

Converting Colors

YUV(113.7010, -5.7686,
123.9192)

Have a look what the booklet for
YUV(113.7010, -5.7686, 123.9192)
contains.

YUV(113.7010, -5.7686, 123.9192)	3
<i>Conversions</i>	4
<i>Details</i>	6
<i>Harmonies</i>	12
<i>Previews</i>	24
<i>Color Blindness Simulation</i>	28
<i>CSS Examples</i>	31

Color

**YUV(113.7010, -5.7686,
123.9192)**

Conversions

Conversions Part 1

Format	Color
Hex	FF2C66
RGB	255, 44, 102
RGB Percent	100%, 17%, 40%
CMY	0.0000, 0.8275, 0.6000
CMYK	0.00, 0.83, 0.60, 0.00
HSL	344°, 100%, 59%
HSV	344°, 83%, 100%
XYZ	44.5390, 24.0207, 14.8594
YIQ	113.7010, 107.1380, 62.7700

Conversions

Conversions Part 2

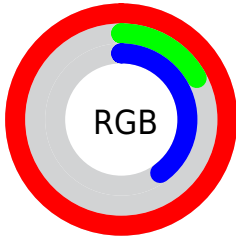
Format	Color
RYB	255, 44, 102
Decimal	16723046
CIELab	56.11, 77.55, 21.36
CIElCh	56, 80.437, 15.396
Yxy	24.0207, 0.5339, 0.2880
Android (android.graphics.Color)	4294913126 (0xFFFF2C66)
YUV	113.7010, -5.7686, 123.9192
Hunter-Lab	49.0109, 76.4439, 16.3318

Details

The YUV color **113.7010, -5.7686, 123.9192** is a dark color, and the websafe version is hex **FF3366**. The color can be described as dark washed rose. A complement of this color would be **185.2990, 5.7686, -123.9192**, and the grayscale version is **114.0000, 0.0000, 0.0000**.

A 20% lighter version of the original color is **160.0180, -3.4599, 83.2992**, and **63.4930, -3.6940, 111.8236** is the 20% darker color. If you saturate the color by 10%, you get **96.9740, -6.3962, 138.5888**, and if you desaturate by 10%, it is **131.0150, -5.4304, 108.7348**.

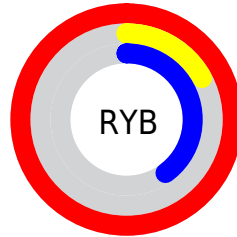
Distribution



Red (100%)

Green (17%)

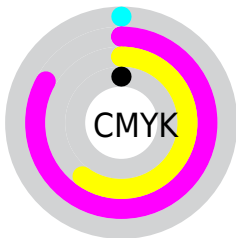
Blue (40%)



Red (100%)

Yellow (17%)

Blue (40%)

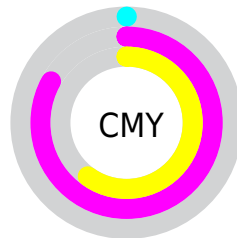


Cyan (0%)

Magenta (83%)

Yellow (60%)

Black (0%)



Cyan (0%)

Magenta (83%)

Yellow (60%)

Brightness & Saturation Gradients

These gradients show how the YUV color 113.7010, -5.7686, 123.9192 changes by changing the brightness by 10 percent. The first figure shows a shift by +10% for each color and the second figure -10%.

Similar to the brightness gradients but the following saturation gradients show a change of the YUV color 113.7010, -5.7686, 123.9192 by changing the saturation by 10% instead.

■ 113.7010, -5.7686,
123.9192

■ 113.7010, -5.7686,
123.9192

255.0000, 0.0000,
0.0000

■ 75.5690, 1.1985,
129.2970

■ 160.0180, -3.4599,
83.2992

■ 63.4930, -3.6940,
111.8236

■ 181.1790, -1.0742,
64.7410

■ 51.5310, -8.1498,
94.2503

■ 201.9810, 2.4744,
46.4977

■ 39.6830, -12.1687,
76.5770

■ 222.7830, 6.0230,
28.2543

■ 29.0460, -12.8407,
58.7187

■ 242.6730, 6.0772,
10.8108

■ 20.0760, -8.4185,
40.2753

■ 9.3830, -4.1328,

18.9581

■ 0.0000, 0.0000,
0.0000

■ 113.7010, -5.7686,
123.9192

■ 113.7010, -5.7686,
123.9192

■ 96.9740, -6.3962,
138.5888

■ 131.0150, -5.4304,
108.7348

■ 84.2250, -7.0129,
149.7697

■ 147.8560, -4.3660,
93.9653

■ 165.1700, -4.0278,
78.7809

■ 182.0110, -2.9634,
64.0114

■ 199.3250, -2.6252,
48.8270

216.1660, -1.5608,
34.0574

233.4800, -1.2226,
18.8730

250.3210, -0.1583,
4.1035

255.0000, 0.0000,
0.0000

Harmonies

Analogous

The Analogous color harmony consists of three colors that are next to each other on the color wheel.



122.4790, 24.4139, 103.0659



113.7010, -5.7686, 123.9192



122.7480, -44.2458, 98.4450

Triad

The Triadic color harmony groups three colors that are evenly spaced from another and form a triangle on the color wheel.



113.7010, -5.7686, 123.9192



100.6710, -45.1938, -64.6095



118.8810, 67.1067, -104.2586

Complementary

The Complementary color scheme is a pair of colors which are on the opposite of each other on the color wheel.



113.7010, -5.7686, 123.9192



185.2990, 5.7686, -123.9192

Split Complementary

Split-complementary colors differ from the complementary color scheme. The scheme consists of three colors, the original color and two neighbors of the complement color.



121.7700, 55.3294, -106.7923



113.7010, -5.7686, 123.9192



106.7390, -4.8013, -93.6101

Square

The Square scheme is like the rectangle color scheme, but the four colors are evenly spaced on the color wheel.



113.7010, -5.7686, 123.9192



122.2240, -60.2564, 6.8196



116.2350, 26.5061, -101.9381



105.9670, 73.4733, -92.9331

Rectangle

The Rectangle color scheme consists of four colors that form a rectangle on the color wheel.



113.7010, -5.7686, 123.9192



125.5880, -61.9149, 72.2753



116.2350, 26.5061, -101.9381



121.2290, 65.9491, -106.3178

Sweetspot

The Sweet Spot groups the original color and five complimentary colors.



113.7010, -5.7686, 123.9192



212.1880, -1.5717, 37.5461



113.2030, 69.9059, 71.7360



101.9150, -0.9441, 22.8765



0.0000, 0.0000, 0.0000



128.0000, 0.0000, 0.0000

Same Dimension

The Same Dimension uses a secret algorithm to generate beautiful new colors.



113.7010, -5.7686, 123.9192



86.2140, -7.0075, 148.0253



134.0910, -44.4149, 106.0372



119.2290, -0.6059, 7.6922



63.1510, -5.0044, 112.1236



21.1880, -1.5717, 37.5461

Inverse Universe

The Inverse Universe completely reimagines the original color for something new.



113.7010, -5.7686, 123.9192



86.2140, -7.0075, 148.0253



164.9090, 44.4149, -106.0372



119.2290, -0.6059, 7.6922



63.1510, -5.0044, 112.1236



21.1880, -1.5717, 37.5461

Previews

White Background



This preview shows how the YUV color 113.7010, -5.7686, 123.9192 looks on a white background.

Color Contrast Check

Large Text (above 18pt) WCAG AA ✓ Pass

Any Text WCAG AA × Fail

Large Text (above 18pt) WCAG AAA × Fail

Any Text WCAG AAA × Fail

Black Background



This preview shows how the YUV color 113.7010, -5.7686, 123.9192 looks on a black background.

Color Contrast Check

Large Text (above 18pt) WCAG AA ✓ Pass

Any Text WCAG AA ✓ Pass

Large Text (above 18pt) WCAG AAA ✓ Pass

Any Text WCAG AAA × Fail

If you want to check with other color combinations, try the [Color Contrast Checker](#).

YUV 113.7010, -5.7686, 123.9192 Background



This preview shows how black text looks on a background with the YUV color 113.7010, -5.7686, 123.9192.



This preview shows how white text looks on a background with the YUV color 113.7010, -5.7686,

Color Blindness Simulation

Color vision deficiency is a very complex topic, and I could not describe the different causes any better than Wikipedia does, so if you want to learn more, you should check out their [article about color blindness](#).

Dichromacy



Original Color

113.7010, -5.7686, 123.9192

Protanopia

135.2110, 3.3470, -0.1850

Deuteranopia

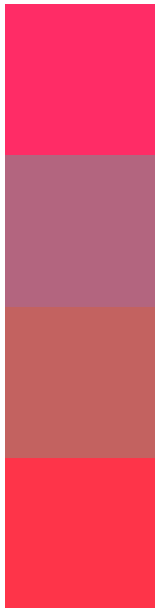
134.3500, -20.8785, 23.3721



Tritanopia

115.0170, -28.6024, 121.0111

Trichromacy



Original Color

113.7010, -5.7686, 123.9192

Protanomaly

127.2860, -0.1410, 45.3532

Deuteranomaly

126.7750, -15.1721, 59.8333

Tritanomaly

114.7920, -20.6035, 122.0854

Monochromacy



Original Color

113.7010, -5.7686, 123.9192

Achromatopsia

114.0000, 0.0000, 0.0000

Achromatomaly

114.1180, -2.0302, 44.6235

CSS Examples

Text

The CSS property to change the color of the text to YUV 113.7010, -5.7686, 123.9192 is called "color". The color property can be set on classes, ids or directly on the HTML element.

This example shows how text in the color `rgb(255, 44, 102)` looks like.

```
.text, #text, p{  
    color:rgb(255, 44, 102)  
}
```

If you want to add a text shadow in that color use the text-shadow property, you can generate a text shadow directly with our [CSS Text Shadow Generator](#).

Here you see how black text with a 4 pixel rgb(255, 44, 102) colored shadow looks like.

```
.shadow{ text-shadow: 4px 4px 2px rgb(255, 44, 102) }
```

Border

The CSS property to change the border of an element to YUV 113.7010, -5.7686, 123.9192 is called "border".

The border property can be set on classes, ids or directly on the HTML element.

This example shows the color as border, it can be applied via the CSS property "border" or "border-color".

```
.border, #border, table{ border:4px solid rgb(255, 44, 102) }
```


If only the border color should be changed use the property border-color.

```
.border{ border-color:rgb(255, 44, 102) }
```

If you want to add a box shadow in that color use:

Here you see how a box with a 4 pixel rgb(255, 44, 102) colored shadow looks like.

```
.boxshadow{ -moz-box-shadow:4px 4px 4px  
4px rgb(255, 44, 102); -webkit-box-  
shadow:4px 4px 4px 4px rgb(255, 44, 102);  
box-shadow:4px 4px 4px 4px rgb(255, 44,  
102) }
```

Background

The CSS property to change the background color of an element to YUV 113.7010, -5.7686, 123.9192 is called "background". The background property can be set on classes, ids or directly on the HTML element.

```
.background, #background, body{  
background: rgb(255, 44, 102) }
```

If only the background color should be changed can be used:

```
.background{ background-color: rgb(255, 44,  
102) }
```

This example shows the color as background, it is applied via the CSS property "background".

To optimize and compress your CSS code, you can use our [online CSS compressor and optimizer](#) based on csstidy. If you want to create a linear or radial gradient as background or border, check our [CSS Gradient Generator](#).

Hey! You found this booklet interesting? Support Converting Colors with the new Membership Option!

The pro membership hides all ads, plus gives you double the colors in the color bucket, and more awesome pro features!

[Learn more, Memberships starting at \\$2.50/m!](#)

**Follow me
on Twitter!**

@ConvertingColor