

Converting Colors

YUV(114.7580, -19.6007,
33.5382)

Have a look what the booklet for
YUV(114.7580, -19.6007, 33.5382)
contains.

YUV(114.7580, -19.6007, 33.5382)	3
<i>Conversions</i>	4
<i>Details</i>	6
<i>Harmonies</i>	12
<i>Previews</i>	24
<i>Color Blindness Simulation</i>	28
<i>CSS Examples</i>	31

Color

**YUV(114.7580, -19.6007,
33.5382)**

Conversions

Conversions Part 1

Format	Color
Hex	99674B
RGB	153, 103, 75
RGB Percent	60%, 40%, 29%
CMY	0.4000, 0.5961, 0.7059
CMYK	0.00, 0.33, 0.51, 0.40
HSL	22°, 34%, 45%
HSV	22°, 51%, 60%
XYZ	19.2571, 16.9808, 8.9193
YIQ	114.7580, 38.7880, 1.8920

Conversions

Conversions Part 2

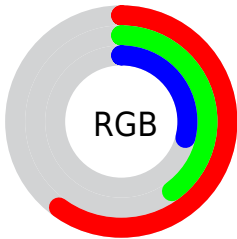
Format	Color
R_{YB}	153, 119, 75
Decimal	10053451
CIE _{Lab}	48.24, 16.79, 23.89
CIE _{LCh}	48, 29.200, 54.905
Yxy	16.9808, 0.4264, 0.3760
Android (android.graphics.Color)	4288243531 (0xFF99674B)
YUV	114.7580, -19.6007, 33.5382
Hunter-Lab	41.2078, 11.3026, 16.0123

Details

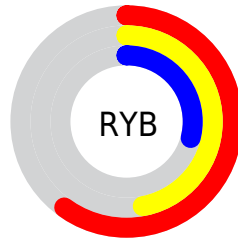
The YUV color **114.7580, -19.6007, 33.5382** is a dark color, and the websafe version is hex **996633**. A complement of this color would be **113.2420, 19.6007, -33.5382**, and the grayscale version is **115.0000, 0.0000, 0.0000**.

A 20% lighter version of the original color is **167.0250, -21.2113, 36.8121**, and **65.8930, -17.6952, 29.0348** is the 20% darker color. If you saturate the color by 10%, you get **107.1780, -23.2588, 40.1859**, and if you desaturate by 10%, it is **122.3380, -15.9426, 26.8906**.

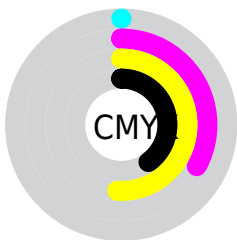
Distribution



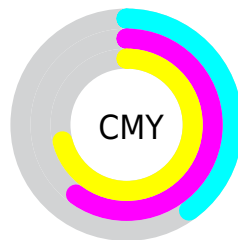
- Red (60%)
- Green (40%)
- Blue (29%)



- Red (60%)
- Yellow (47%)
- Blue (29%)



- Cyan (0%)
- Magenta (33%)
- Yellow (51%)
- Black (40%)



- Cyan (40%)
- Magenta (60%)
- Yellow (71%)

Brightness & Saturation Gradients

These gradients show how the YUV color 114.7580, -19.6007, 33.5382 changes by changing the brightness by 10 percent. The first figure shows a shift by +10% for each color and the second figure -10%.

Similar to the brightness gradients but the following saturation gradients show a change of the YUV color 114.7580, -19.6007, 33.5382 by changing the saturation by 10% instead.

■ 114.7580,
-19.6007, 33.5382

■ 114.7580,
-19.6007, 33.5382

■ 255.0000, 0.0000,
0.0000

■ 89.9750, -18.7217,
31.5939

■ 167.0250,
-21.2113, 36.8121

■ 65.8930, -17.6952,
29.0348

■ 194.8080,
-22.0903, 38.7564

■ 42.5830, -17.5424,
26.6757

■ 219.1060,
-20.7583, 31.4790

■ 21.9830, -10.8376,
22.8169

■ 238.6200,
-17.0677, 14.3653

■ 6.2790, -3.0955,
12.9103

■ 252.4920, -9.6096,
2.1995

■ 0.0000, 0.0000,
0.0000

■ 114.7580,
-19.6007, 33.5382

■ 114.7580,
-19.6007, 33.5382

■ 107.1780,
-23.2588, 40.1859

■ 122.3380,
-15.9426, 26.8906

■ 99.4840, -27.3536,
46.9335

■ 130.0320,
-11.8478, 20.1429

■ 92.4910, -31.3011,
53.0664

■ 137.0250, -7.9003,
14.0101

■ 84.9110, -34.9591,
59.7141

■ 144.6050, -4.2423,
7.3624

■ 78.0320, -38.4698,
65.7469

■ 152.2990, -0.1474,
0.6148

■ 159.8790, 3.5107,
-6.0329

■ 167.4590, 7.1687,
-12.6805

■ 174.4520, 11.1162,

-18.8134

■ 182.1460, 15.2110,
-25.5610

Harmonies

Analogous

The Analogous color harmony consists of three colors that are next to each other on the color wheel.



115.6200, -10.1657, 40.6753



114.7580, -19.6007, 33.5382



113.2200, -23.7725, 18.2241

Triad

The Triadic color harmony groups three colors that are evenly spaced from another and form a triangle on the color wheel.



114.7580, -19.6007, 33.5382



101.0280, 3.9302, -47.3826



115.8850, 21.2557, -4.2841

Complementary

The Complementary color scheme is a pair of colors which are on the opposite of each other on the color wheel.



114.7580, -19.6007, 33.5382



113.2420, 19.6007, -33.5382

Split Complementary

Split-complementary colors differ from the complementary color scheme. The scheme consists of three colors, the original color and two neighbors of the complement color.



108.7780, 26.7314, -34.0083



114.7580, -19.6007, 33.5382



89.8250, 21.7783, -78.7765

Square

The Square scheme is like the rectangle color scheme, but the four colors are evenly spaced on the color wheel.



114.7580, -19.6007, 33.5382



107.2840, -10.9860, -23.0511



96.3240, 28.4343, -66.9361



118.0470, 12.3018, 21.0068

Rectangle

The Rectangle color scheme consists of four colors that form a rectangle on the color wheel.



114.7580, -19.6007, 33.5382



111.4850, -22.4241, 5.7137



96.3240, 28.4343, -66.9361



114.4000, 23.4668, -13.5058

Sweetspot

The Sweet Spot groups the original color and five complimentary colors.



114.7580, -19.6007, 33.5382



184.4270, -7.6055, 12.7805



104.1360, 10.7790, 42.8537



90.6050, -4.2423, 7.3624



227.0000, 0.0000, 0.0000



99.0000, 0.0000, 0.0000

Same Dimension

The Same Dimension uses a secret algorithm to generate beautiful new colors.



114.7580, -19.6007, 33.5382



139.4200, -30.2801, 52.2517



137.0640, -30.5976, 13.9759



73.1530, -2.0474, 3.3738



71.2100, -35.1065, 60.3288



6.8220, -3.3632, 5.4181

Inverse Universe

The Inverse Universe completely reimagines the original color for something new.



113.2420, 19.6007, -33.5382



136.9930, 30.5695, -51.7369



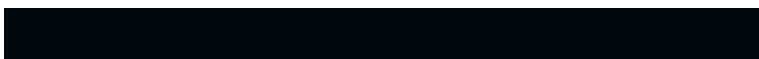
90.9360, 30.5976, -13.9759



72.8470, 2.0474, -3.3738



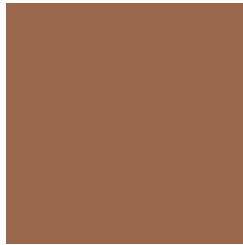
68.7900, 35.1065, -60.3288



6.1780, 3.3632, -5.4181

Previews

White Background



This preview shows how the YUV color 114.7580, -19.6007, 33.5382 looks on a white background.

Color Contrast Check

Large Text (above 18pt) WCAG AA ✓ Pass

Any Text WCAG AA ✓ Pass

Large Text (above 18pt) WCAG AAA ✓ Pass

Any Text WCAG AAA × Fail

Black Background



This preview shows how the YUV color 114.7580, -19.6007, 33.5382 looks on a black background.

Color Contrast Check

Large Text (above 18pt) WCAG AA ✓ Pass

Any Text WCAG AA × Fail

Large Text (above 18pt) WCAG AAA × Fail

Any Text WCAG AAA × Fail

If you want to check with other color combinations, try the [Color Contrast Checker](#).

YUV 114.7580, -19.6007, 33.5382

Background



This preview shows how black text looks on a background with the YUV color 114.7580, -19.6007, 33.5382.



This preview shows how white text looks on a background with the YUV color 114.7580, -19.6007, 33.5382.

Color Blindness Simulation

Color vision deficiency is a very complex topic, and I could not describe the different causes any better than Wikipedia does, so if you want to learn more, you should check out their [article about color blindness](#).

Dichromacy



Original Color

114.7580, -19.6007, 33.5382

Protanopia

113.7010, -16.6146, 9.0322

Deuteranopia

114.2680, -19.8521, 20.8130



Tritanopia

116.8410, -5.3446, 34.3424

Trichromacy



Original Color

114.7580, -19.6007, 33.5382

Protanomaly

114.4140, -17.9521, 18.0539

Deuteranomaly

114.0020, -19.7210, 25.4312

Tritanomaly

115.8750, -10.2914, 34.3126

Monochromacy



Original Color

114.7580, -19.6007, 33.5382

Achromatopsia

115.0000, 0.0000, 0.0000

Achromatomaly

115.1280, -7.4581, 12.1657

CSS Examples

Text

The CSS property to change the color of the text to YUV 114.7580, -19.6007, 33.5382 is called "color". The color property can be set on classes, ids or directly on the HTML element.

This example shows how text in the color `rgb(153, 103, 75)` looks like.

```
.text, #text, p{  
    color:rgb(153, 103, 75)  
}
```

If you want to add a text shadow in that color use the text-shadow property, you can generate a text shadow directly with our [CSS Text Shadow Generator](#).

Here you see how black text with a 4 pixel rgb(153, 103, 75) colored shadow looks like.

```
.shadow{ text-shadow: 4px 4px 2px rgb(153, 103, 75) }
```

Border

The CSS property to change the border of an element to YUV 114.7580, -19.6007, 33.5382 is called "border".

The border property can be set on classes, ids or directly on the HTML element.

This example shows the color as border, it can be applied via the CSS property "border" or "border-color".

```
.border, #border, table{ border:4px solid rgb(153, 103, 75) }
```


If only the border color should be changed use the property border-color.

```
.border{ border-color:rgb(153, 103, 75) }
```

If you want to add a box shadow in that color use:

Here you see how a box with a 4 pixel rgb(153, 103, 75) colored shadow looks like.

```
.boxshadow{ -moz-box-shadow:4px 4px 4px  
4px rgb(153, 103, 75); -webkit-box-  
shadow:4px 4px 4px 4px rgb(153, 103, 75);  
box-shadow:4px 4px 4px 4px rgb(153, 103,  
75) }
```

Background

The CSS property to change the background color of an element to YUV 114.7580, -19.6007, 33.5382 is called "background". The background property can be set on classes, ids or directly on the HTML element.

```
.background, #background, body{  
background: rgb(153, 103, 75) }
```

If only the background color should be changed can be used:

```
.background{ background-color: rgb(153,  
103, 75) }
```

This example shows the color as background, it is applied via the CSS property "background".

To optimize and compress your CSS code, you can use our [online CSS compressor and optimizer](#) based on csstidy. If you want to create a linear or radial gradient as background or border, check our [CSS Gradient Generator](#).

Hey! You found this booklet interesting? Support Converting Colors with the new Membership Option!

The pro membership hides all ads, plus gives you double the colors in the color bucket, and more awesome pro features!

[Learn more, Memberships starting at \\$2.50/m!](#)

**Follow me
on Twitter!**

@ConvertingColor