

Converting Colors

YUV(115.7390, -14.1683,
17.7689)

Have a look what the booklet for
YUV(115.7390, -14.1683, 17.7689)
contains.

YUV(115.7390, -14.1683, 17.7689)	3
<i>Conversions</i>	4
<i>Details</i>	6
<i>Harmonies</i>	12
<i>Previews</i>	24
<i>Color Blindness Simulation</i>	28
<i>CSS Examples</i>	31

Color

**YUV(115.7390, -14.1683,
17.7689)**

Conversions

Conversions Part 1

Format	Color
Hex	886F57
RGB	136, 111, 87
RGB Percent	53%, 44%, 34%
CMY	0.4667, 0.5647, 0.6588
CMYK	0.00, 0.18, 0.36, 0.47
HSL	29°, 22%, 44%
HSV	29°, 36%, 53%
XYZ	17.5581, 17.2912, 11.4290
YIQ	115.7390, 22.6040, -2.1640

Conversions

Conversions Part 2

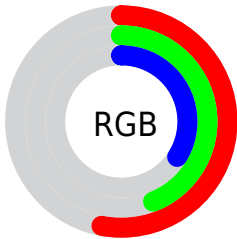
Format	Color
RYB	136, 134, 87
Decimal	8941399
CIELab	48.62, 6.21, 17.08
CIELCh	49, 18.172, 70.028
Yxy	17.2912, 0.3794, 0.3736
Android (android.graphics.Color)	4287131479 (0xFF886F57)
YUV	115.7390, -14.1683, 17.7689
Hunter-Lab	41.5827, 2.6009, 12.8121

Details

The YUV color **115.7390, -14.1683, 17.7689** is a dark color, and the websafe version is hex **996666**. A complement of this color would be **107.2610, 14.1683, -17.7689**, and the grayscale version is **116.0000, 0.0000, 0.0000**.

A 20% lighter version of the original color is **168.1090, -15.3367, 19.1984**, and **67.0700, -12.8525, 15.7246** is the 20% darker color. If you saturate the color by 10%, you get **110.0340, -18.2578, 22.7722**, and if you desaturate by 10%, it is **121.4440, -10.0789, 12.7656**.

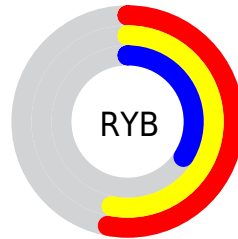
Distribution



Red (53%)

Green (44%)

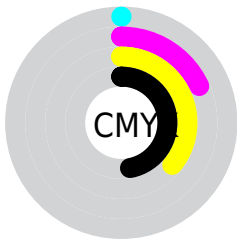
Blue (34%)



Red (53%)

Yellow (53%)

Blue (34%)

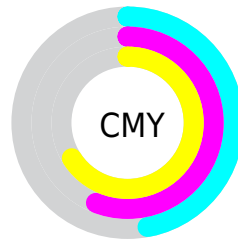


Cyan (0%)

Magenta (18%)

Yellow (36%)

Black (47%)



Cyan (47%)

Magenta (56%)

Yellow (66%)

Brightness & Saturation Gradients

These gradients show how the YUV color 115.7390, -14.1683, 17.7689 changes by changing the brightness by 10 percent. The first figure shows a shift by +10% for each color and the second figure -10%.

Similar to the brightness gradients but the following saturation gradients show a change of the YUV color 115.7390, -14.1683, 17.7689 by changing the saturation by 10% instead.

■ 115.7390,
-14.1683, 17.7689

■ 115.7390,
-14.1683, 17.7689

■ 255.0000, 0.0000,
0.0000

■ 91.2550, -13.4367,
16.4394

■ 168.1090,
-15.3367, 19.1984

■ 67.0700, -12.8525,
15.7246

■ 195.2940,
-15.9209, 19.9132

■ 44.7000, -11.6841,
14.2951

■ 222.8920,
-16.2158, 21.1427

■ 23.9880, -11.8261,
13.1655

■ 245.4990,
-13.5570, 8.3324

■ 0.2990, -0.1474,
0.6148

■ 254.0880, -3.4944,
0.7998

■ 0.0000, 0.0000,
0.0000

■ 115.7390,
-14.1683, 17.7689

■ 115.7390,
-14.1683, 17.7689

■ 110.0340,
-18.2578, 22.7722

■ 121.4440,
-10.0789, 12.7656

■ 104.4430,
-21.9104, 27.6755

■ 127.0350, -6.4263,
7.8623

■ 98.7380, -25.9998,
32.6788

■ 132.7400, -2.3368,
2.8590

■ 93.1470, -29.6525,
37.5821

■ 138.3310, 1.3158,
-2.0443

■ 87.4420, -33.7419,
42.5854

■ 144.0360, 5.4053,
-7.0476

■ 81.7370, -37.8313,
47.5887

■ 149.7410, 9.4947,
-12.0509

■ 79.9930, -39.4365,
49.1181

■ 155.3320, 13.1473,
-16.9542

■ 161.0370, 17.2368,

-21.9574

■ 166.0410, 21.1788,
-26.3460

Harmonies

Analogous

The Analogous color harmony consists of three colors that are next to each other on the color wheel.



117.1080, -10.4062, 24.4613



115.7390, -14.1683, 17.7689



114.2600, -14.4252, 6.7880

Triad

The Triadic color harmony groups three colors that are evenly spaced from another and form a triangle on the color wheel.



115.7390, -14.1683, 17.7689



108.5940, 5.6232, -30.3389



117.4920, 10.6034, 5.7075

Complementary

The Complementary color scheme is a pair of colors which are on the opposite of each other on the color wheel.



115.7390, -14.1683, 17.7689



107.2610, 14.1683, -17.7689

Split Complementary

Split-complementary colors differ from the complementary color scheme. The scheme consists of three colors, the original color and two neighbors of the complement color.



115.2450, 15.1622, -9.8619



115.7390, -14.1683, 17.7689



109.1190, 12.7593, -32.5534

Square

The Square scheme is like the rectangle color scheme, but the four colors are evenly spaced on the color wheel.



115.7390, -14.1683, 17.7689



110.1840, -2.5557, -20.3324



111.9720, 15.7898, -24.5314



118.4460, 3.7241, 18.9029

Rectangle

The Rectangle color scheme consists of four colors that form a rectangle on the color wheel.



115.7390, -14.1683, 17.7689



112.8890, -11.7773, -2.5337



111.9720, 15.7898, -24.5314



117.2140, 12.2195, 0.6893

Sweetspot

The Sweet Spot groups the original color and five complimentary colors.



115.7390, -14.1683, 17.7689



167.9640, -5.4053, 7.0476



104.5010, 3.6970, 27.6246



84.2240, -3.0684, 4.1886



217.0000, 0.0000, 0.0000



89.0000, 0.0000, 0.0000

Same Dimension

The Same Dimension uses a secret algorithm to generate beautiful new colors.



115.7390, -14.1683, 17.7689



144.4430, -21.9104, 27.6755



129.8270, -21.1137, 5.4137



65.8540, -1.9000, 2.7590



77.9220, -38.4155, 48.3034



2.6690, -1.3158, 2.0443

Inverse Universe

The Inverse Universe completely reimagines the original color for something new.



107.2610, 14.1683, -17.7689



131.5570, 21.9104, -27.6755



93.1730, 21.1137, -5.4137



64.5590, 2.1894, -2.2442



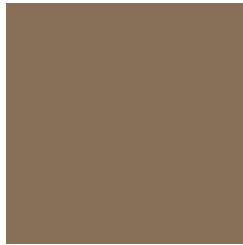
55.0780, 38.4155, -48.3034



2.3310, 1.3158, -2.0443

Previews

White Background



This preview shows how the YUV color 115.7390, -14.1683, 17.7689 looks on a white background.

Color Contrast Check

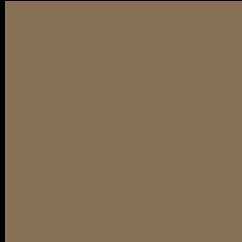
Large Text (above 18pt) WCAG AA ✓ Pass

Any Text WCAG AA ✓ Pass

Large Text (above 18pt) WCAG AAA ✓ Pass

Any Text WCAG AAA × Fail

Black Background



This preview shows how the YUV color 115.7390, -14.1683, 17.7689 looks on a black background.

Color Contrast Check

Large Text (above 18pt) WCAG AA ✓ Pass

Any Text WCAG AA × Fail

Large Text (above 18pt) WCAG AAA × Fail

Any Text WCAG AAA × Fail

If you want to check with other color combinations, try the [Color Contrast Checker](#).

YUV 115.7390, -14.1683, 17.7689

Background



This preview shows how black text looks on a background with the YUV color 115.7390, -14.1683, 17.7689.



This preview shows how white text looks on a background with the YUV color 115.7390, -14.1683, 17.7689.

Color Blindness Simulation

Color vision deficiency is a very complex topic, and I could not describe the different causes any better than Wikipedia does, so if you want to learn more, you should check out their [article about color blindness](#).

Dichromacy



Original Color

115.7390, -14.1683, 17.7689

Protanopia

114.4280, -12.5360, 7.5176

Deuteranopia

115.7390, -14.1683, 17.7689



Tritanopia

117.4800, -1.2226, 18.8730

Trichromacy



Original Color

115.7390, -14.1683, 17.7689

Protanomaly

115.2220, -13.4204, 11.2063

Deuteranomaly

115.7390, -14.1683, 17.7689

Tritanomaly

116.6280, -5.7326, 18.7432

Monochromacy



Original Color

115.7390, -14.1683, 17.7689

Achromatopsia

116.0000, 0.0000, 0.0000

Achromatomaly

115.6650, -5.2578, 6.4328

CSS Examples

Text

The CSS property to change the color of the text to YUV 115.7390, -14.1683, 17.7689 is called "color". The color property can be set on classes, ids or directly on the HTML element.

This example shows how text in the color `rgb(136, 111, 87)` looks like.

```
.text, #text, p{  
    color:rgb(136, 111, 87)  
}
```

If you want to add a text shadow in that color use the text-shadow property, you can generate a text shadow directly with our [CSS Text Shadow Generator](#).

Here you see how black text with a 4 pixel rgb(136, 111, 87) colored shadow looks like.

```
.shadow{ text-shadow: 4px 4px 2px rgb(136, 111, 87) }
```

Border

The CSS property to change the border of an element to YUV 115.7390, -14.1683, 17.7689 is called "border".

The border property can be set on classes, ids or directly on the HTML element.

This example shows the color as border, it can be applied via the CSS property "border" or "border-color".

```
.border, #border, table{ border:4px solid rgb(136, 111, 87) }
```


If only the border color should be changed use the property `border-color`.

```
.border{ border-color:rgb(136, 111, 87) }
```

If you want to add a box shadow in that color use:

Here you see how a box with a 4 pixel `rgb(136, 111, 87)` colored shadow looks like.

```
.boxshadow{ -moz-box-shadow:4px 4px 4px  
4px rgb(136, 111, 87); -webkit-box-  
shadow:4px 4px 4px 4px rgb(136, 111, 87);  
box-shadow:4px 4px 4px 4px rgb(136, 111,  
87) }
```

Background

The CSS property to change the background color of an element to YUV 115.7390, -14.1683, 17.7689 is called "background". The background property can be set on classes, ids or directly on the HTML element.

```
.background, #background, body{  
background: rgb(136, 111, 87) }
```

If only the background color should be changed can be used:

```
.background{ background-color: rgb(136,  
111, 87) }
```

This example shows the color as background, it is applied via the CSS property "background".

To optimize and compress your CSS code, you can use our [online CSS compressor and optimizer](#) based on csstidy. If you want to create a linear or radial gradient as background or border, check our [CSS Gradient Generator](#).

Hey! You found this booklet interesting? Support Converting Colors with the new Membership Option!

The pro membership hides all ads, plus gives you double the colors in the color bucket, and more awesome pro features!

[Learn more, Memberships starting at \\$2.50/m!](#)

**Follow me
on Twitter!**

@ConvertingColor