

Converting Colors

YUV(116.2980, -4.5839,
117.2567)

Have a look what the booklet for
YUV(116.2980, -4.5839, 117.2567)
contains.

YUV(116.2980, -4.5839, 117.2567)	3
<i>Conversions</i>	4
<i>Details</i>	6
<i>Harmonies</i>	12
<i>Previews</i>	24
<i>Color Blindness Simulation</i>	28
<i>CSS Examples</i>	31

Color

**YUV(116.2980, -4.5839,
117.2567)**

Conversions

Conversions Part 1

Format	Color
Hex	FA326B
RGB	250, 50, 107
RGB Percent	98%, 20%, 42%
CMY	0.0196, 0.8039, 0.5804
CMYK	0.00, 0.80, 0.57, 0.02
HSL	343°, 95%, 59%
HSV	343°, 80%, 98%
XYZ	43.2188, 23.6667, 16.2002
YIQ	116.2980, 100.9030, 60.1270

Conversions

Conversions Part 2

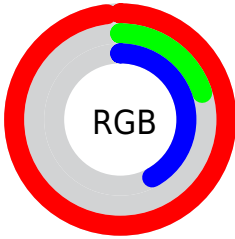
Format	Color
R_{YB}	250, 50, 107
Decimal	16396907
CIE _{Lab}	55.75, 75.21, 17.73
CIE _{LCh}	56, 77.271, 13.267
Yxy	23.6667, 0.5202, 0.2848
Android (android.graphics.Color)	4294586987 (0xFFFA326B)
YUV	116.2980, -4.5839, 117.2567
Hunter-Lab	48.6485, 73.4427, 14.3101

Details

The YUV color **116.2980, -4.5839, 117.2567** is a dark color, and the websafe version is hex **FF3366**. The color can be described as middle washed rose. A complement of this color would be **183.7020, 4.5839, -117.2567**, and the grayscale version is **116.0000, 0.0000, 0.0000**.

A 20% lighter version of the original color is **162.3490, -2.1441, 81.2549**, and **62.4540, -1.2098, 108.3498** is the 20% darker color. If you saturate the color by 10%, you get **99.5710, -5.2115, 131.9262**, and if you desaturate by 10%, it is **133.0250, -3.9563, 102.5871**.

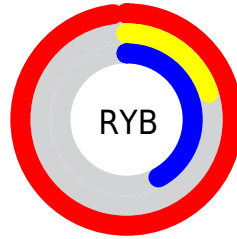
Distribution



Red (98%)

Green (20%)

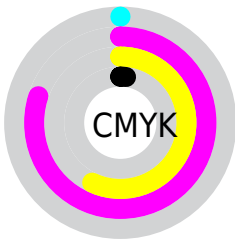
Blue (42%)



Red (98%)

Yellow (20%)

Blue (42%)

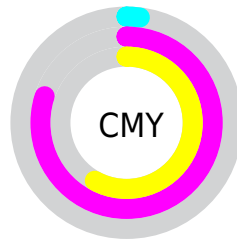


Cyan (0%)

Magenta (80%)

Yellow (57%)

Black (2%)



Cyan (2%)

Magenta (80%)

Yellow (58%)

Brightness & Saturation Gradients

These gradients show how the YUV color 116.2980, -4.5839, 117.2567 changes by changing the brightness by 10 percent. The first figure shows a shift by +10% for each color and the second figure -10%.

Similar to the brightness gradients but the following saturation gradients show a change of the YUV color 116.2980, -4.5839, 117.2567 by changing the saturation by 10% instead.

■ 116.2980, -4.5839,
117.2567

■ 116.2980, -4.5839,
117.2567

255.0000, 0.0000,
0.0000

■ 74.6440, 4.1195,
125.7232

■ 162.3490, -2.1441,
81.2549

■ 62.4540, -1.2098,
108.3498

■ 183.0370, 0.9678,
63.1116

■ 50.7910, -5.8130,
91.3913

■ 203.7250, 4.0796,
44.9682

■ 39.3560, -9.5425,
74.2328

■ 224.6410, 8.0650,
26.6248

■ 28.0350, -12.8353,
56.9743

■ 243.8470, 5.4984,
9.7812

■ 19.1790, -7.9762,
38.4310

■ 8.1870, -3.5432,

16.4990

■ 0.0000, 0.0000,
0.0000

■ 116.2980, -4.5839,
117.2567

■ 116.2980, -4.5839,
117.2567

■ 99.5710, -5.2115,
131.9262

■ 133.0250, -3.9563,
102.5871

■ 82.8440, -5.8391,
146.5958

■ 149.7520, -3.3287,
87.9175

■ 166.4790, -2.7011,
73.2479

■ 183.2060, -2.0736,
58.5783

■ 199.8190, -1.8828,
44.0087

216.5460, -1.2552,
29.3392

233.2730, -0.6276,
14.6696

250.0000, 0.0000,
0.0000

253.5050, 0.7370,
-3.0739

Harmonies

Analogous

The Analogous color harmony consists of three colors that are next to each other on the color wheel.



125.3100, 24.0042, 94.4441



116.2980, -4.5839, 117.2567



123.1760, -40.0198, 96.3156

Triad

The Triadic color harmony groups three colors that are evenly spaced from another and form a triangle on the color wheel.



116.2980, -4.5839, 117.2567



106.1890, -47.4212, -50.1548



118.2940, 67.3961, -103.7438

Complementary

The Complementary color scheme is a pair of colors which are on the opposite of each other on the color wheel.



116.2980, -4.5839, 117.2567



183.7020, 4.5839, -117.2567

Split Complementary

Split-complementary colors differ from the complementary color scheme. The scheme consists of three colors, the original color and two neighbors of the complement color.



120.1570, 51.6876, -105.3777



116.2980, -4.5839, 117.2567



104.4080, -6.1171, -91.5658

Square

The Square scheme is like the rectangle color scheme, but the four colors are evenly spaced on the color wheel.



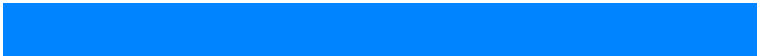
116.2980, -4.5839, 117.2567



122.2460, -60.2673, 10.3083



114.2630, 24.0273, -100.2087



106.5540, 73.1839, -93.4479

Rectangle

The Rectangle color scheme consists of four colors that form a rectangle on the color wheel.



116.2980, -4.5839, 117.2567



124.4140, -61.3361, 73.3049



114.2630, 24.0273, -100.2087



120.5280, 65.8017, -105.7031

Sweetspot

The Sweet Spot groups the original color and five complimentary colors.



116.2980, -4.5839, 117.2567



214.1770, -1.5663, 35.8018



114.6600, 66.7226, 66.0732



103.2030, -1.0861, 21.7470



0.0000, 0.0000, 0.0000



128.0000, 0.0000, 0.0000

Same Dimension

The Same Dimension uses a secret algorithm to generate beautiful new colors.



116.2980, -4.5839, 117.2567



91.2350, -5.5389, 143.6219



133.2800, -41.0570, 102.3634



116.3430, -0.1691, 7.5922



62.6670, -4.2728, 110.7940



20.1770, -1.5663, 35.8018

Inverse Universe

The Inverse Universe completely reimagines the original color for something new.



116.2980, -4.5839, 117.2567



91.2350, -5.5389, 143.6219



166.7200, 41.0570, -102.3634



116.3430, -0.1691, 7.5922



62.6670, -4.2728, 110.7940



20.1770, -1.5663, 35.8018

Previews

White Background



This preview shows how the YUV color 116.2980, -4.5839, 117.2567 looks on a white background.

Color Contrast Check

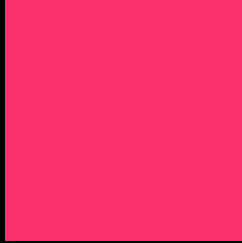
Large Text (above 18pt) WCAG AA ✓ Pass

Any Text WCAG AA × Fail

Large Text (above 18pt) WCAG AAA × Fail

Any Text WCAG AAA × Fail

Black Background



This preview shows how the YUV color 116.2980, -4.5839, 117.2567 looks on a black background.

Color Contrast Check

Large Text (above 18pt) WCAG AA ✓ Pass

Any Text WCAG AA ✓ Pass

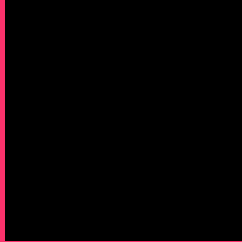
Large Text (above 18pt) WCAG AAA ✓ Pass

Any Text WCAG AAA × Fail

If you want to check with other color combinations, try the [Color Contrast Checker](#).

YUV 116.2980, -4.5839, 117.2567

Background



This preview shows how black text looks on a background with the YUV color 116.2980, -4.5839, 117.2567.



This preview shows how white text looks on a background with the YUV color 116.2980, -4.5839,

Color Blindness Simulation

Color vision deficiency is a very complex topic, and I could not describe the different causes any better than Wikipedia does, so if you want to learn more, you should check out their [article about color blindness](#).

Dichromacy



Original Color

116.2980, -4.5839, 117.2567

Protanopia

134.5960, 6.1152, -1.3997

Deuteranopia

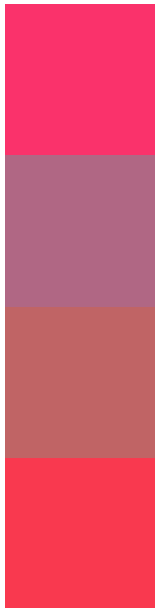
133.7350, -18.1104, 22.1574



Tritanopia

117.1410, -26.6915, 114.7633

Trichromacy



Original Color

116.2980, -4.5839, 117.2567

Protanomaly

128.1330, 1.9064, 41.9794

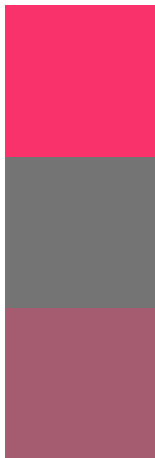
Deuteranomaly

127.6220, -13.1246, 56.4595

Tritanomaly

116.9160, -18.6926, 115.8377

Monochromacy



Original Color

116.2980, -4.5839, 117.2567

Achromatopsia

116.0000, 0.0000, 0.0000

Achromatomaly

116.2210, -1.5880, 42.7792

CSS Examples

Text

The CSS property to change the color of the text to YUV 116.2980, -4.5839, 117.2567 is called "color". The color property can be set on classes, ids or directly on the HTML element.

This example shows how text in the color `rgb(250, 50, 107)` looks like.

```
.text, #text, p{  
    color:rgb(250, 50, 107)  
}
```

If you want to add a text shadow in that color use the text-shadow property, you can generate a text shadow directly with our [CSS Text Shadow Generator](#).

Here you see how black text with a 4 pixel rgb(250, 50, 107) colored shadow looks like.

```
.shadow{ text-shadow: 4px 4px 2px rgb(250, 50, 107) }
```

Border

The CSS property to change the border of an element to YUV 116.2980, -4.5839, 117.2567 is called "border".

The border property can be set on classes, ids or directly on the HTML element.

This example shows the color as border, it can be applied via the CSS property "border" or "border-color".

```
.border, #border, table{ border:4px solid rgb(250, 50, 107) }
```


If only the border color should be changed use the property border-color.

```
.border{ border-color:rgb(250, 50, 107) }
```

If you want to add a box shadow in that color use:

Here you see how a box with a 4 pixel rgb(250, 50, 107) colored shadow looks like.

```
.boxshadow{ -moz-box-shadow:4px 4px 4px  
4px rgb(250, 50, 107); -webkit-box-  
shadow:4px 4px 4px 4px rgb(250, 50, 107);  
box-shadow:4px 4px 4px 4px rgb(250, 50,  
107) }
```

Background

The CSS property to change the background color of an element to YUV 116.2980, -4.5839, 117.2567 is called "background". The background property can be set on classes, ids or directly on the HTML element.

```
.background, #background, body{  
background: rgb(250, 50, 107) }
```

If only the background color should be changed can be used:

```
.background{ background-color: rgb(250, 50,  
107) }
```

This example shows the color as background, it is applied via the CSS property "background".

To optimize and compress your CSS code, you can use our [online CSS compressor and optimizer](#) based on csstidy. If you want to create a linear or radial gradient as background or border, check our [CSS Gradient Generator](#).

Hey! You found this booklet interesting? Support Converting Colors with the new Membership Option!

The pro membership hides all ads, plus gives you double the colors in the color bucket, and more awesome pro features!

[Learn more, Memberships starting at \\$2.50/m!](#)

**Follow me
on Twitter!**

@ConvertingColor