

# Converting Colors

YUV(116.7210, -6.2715,  
98.4687)

Have a look what the booklet for  
YUV(116.7210, -6.2715, 98.4687)  
contains.

<b>YUV(116.7210, -6.2715, 98.4687)</b> .....	3
<b><i>Conversions</i></b> .....	4
<b><i>Details</i></b> .....	6
<b><i>Harmonies</i></b> .....	12
<b><i>Previews</i></b> .....	24
<b><i>Color Blindness Simulation</i></b> .....	28
<b><i>CSS Examples</i></b> .....	31

# Color

**YUV(116.7210, -6.2715,  
98.4687)**

# Conversions

## Conversions Part 1

<b>Format</b>	<b>Color</b>
Hex	E53E68
RGB	229, 62, 104
RGB Percent	90%, 24%, 41%
CMY	0.1020, 0.7569, 0.5922
CMYK	0.00, 0.73, 0.55, 0.10
HSL	345°, 76%, 57%
HSV	345°, 73%, 90%
XYZ	36.5344, 21.1027, 15.2444
YIQ	116.7210, 86.0500, 48.4660

# Conversions

## Conversions Part 2

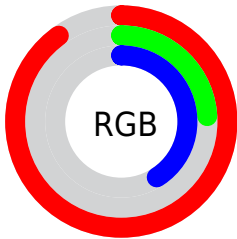
<b>Format</b>	<b>Color</b>
<a href="#">RYB</a>	229, 62, 104
Decimal	15023720
CIELab	53.06, 65.86, 15.22
CIELCh	53, 67.601, 13.012
Yxy	21.1027, 0.5013, 0.2895
Android (android.graphics.Color)	4293213800 (0xFFE53E68)
YUV	116.7210, -6.2715, 98.4687
Hunter-Lab	45.9377, 61.5706, 12.4811

# Details

The YUV color **116.7210, -6.2715, 98.4687** is a dark color, and the websafe version is hex **CC3366**. The color can be described as dark washed rose. A complement of this color would be **174.2790, 6.2715, -98.4687**, and the grayscale version is **117.0000, 0.0000, 0.0000**.

A 20% lighter version of the original color is **165.5290, -5.1908, 78.4661**, and **56.5450, 0.7173, 96.8690** is the 20% darker color. If you saturate the color by 10%, you get **101.2820, -7.0410, 112.0087**, and if you desaturate by 10%, it is **132.1600, -5.5019, 84.9287**.

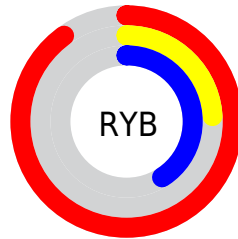
# Distribution



Red (90%)

Green (24%)

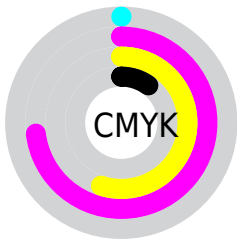
Blue (41%)



Red (90%)

Yellow (24%)

Blue (41%)

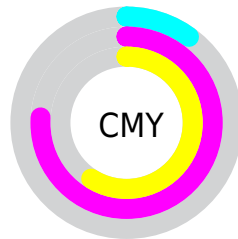


Cyan (0%)

Magenta (73%)

Yellow (55%)

Black (10%)



Cyan (10%)

Magenta (76%)

Yellow (59%)

# Brightness & Saturation Gradients

These gradients show how the YUV color 116.7210, -6.2715, 98.4687 changes by changing the brightness by 10 percent. The first figure shows a shift by +10% for each color and the second figure -10%.

Similar to the brightness gradients but the following saturation gradients show a change of the YUV color 116.7210, -6.2715, 98.4687 by changing the saturation by 10% instead.



■ 116.7210, -6.2715,  
98.4687

■ 116.7210, -6.2715,  
98.4687

255.0000, 0.0000,  
0.0000

■ 81.8230, -0.8987,  
101.8872

■ 165.5290, -5.1908,  
78.4661

■ 56.5450, 0.7173,  
96.8690

■ 185.6300, -1.7896,  
60.8375

■ 45.0670, -4.4700,  
80.6252

■ 205.7310, 1.6116,  
43.2089

■ 33.5180, -8.6364,  
63.5667

■ 225.9460, 5.4496,  
25.4804

■ 23.2510, -10.4767,  
47.1379

■ 245.6080, 4.6303,  
8.2368

■ 14.2810, -6.0545,  
28.6946

■ 0.0000, 0.0000,

0.0000

■ 116.7210, -6.2715,  
98.4687

■ 116.7210, -6.2715,  
98.4687

■ 101.2820, -7.0410,  
112.0087

■ 132.1600, -5.5019,  
84.9287

■ 85.8430, -7.8106,  
125.5487

■ 147.5990, -4.7323,  
71.3887

■ 75.0830, -8.4219,  
134.9852

■ 163.0380, -3.9627,  
57.8487

■ 178.5910, -2.7564,  
44.2087

■ 194.0300, -1.9868,  
30.6687

■ 208.8820, -0.9278,  
17.6435

■ 224.3210, -0.1583,  
4.1035

■ 239.7600, 0.6113,  
-9.4365

■ 247.2260, 3.8326,  
-15.9842

# Harmonies

## Analogous

The Analogous color harmony consists of three colors that are next to each other on the color wheel.



123.2450, 19.1062, 78.7151



116.7210, -6.2715, 98.4687



119.7660, -34.8876, 83.5202

# Triad

The Triadic color harmony groups three colors that are evenly spaced from another and form a triangle on the color wheel.



116.7210, -6.2715, 98.4687



105.7740, -37.8496, -40.1438



111.0730, 62.5750, -97.4110

# Complementary

The Complementary color scheme is a pair of colors which are on the opposite of each other on the color wheel.



116.7210, -6.2715, 98.4687



174.2790, 6.2715, -98.4687

# Split Complementary

Split-complementary colors differ from the complementary color scheme. The scheme consists of three colors, the original color and two neighbors of the complement color.



112.0070, 45.8455, -98.2301



116.7210, -6.2715, 98.4687



98.8970, -4.3862, -86.7327

# Square

The Square scheme is like the rectangle color scheme, but the four colors are evenly spaced on the color wheel.



116.7210, -6.2715, 98.4687



116.0550, -57.2151, 11.3528



107.0250, 21.6797, -93.8609



102.0450, 68.5048, -85.9855



# Rectangle

The Rectangle color scheme consists of four colors that form a rectangle on the color wheel.



116.7210, -6.2715, 98.4687



118.6240, -56.5096, 65.2278



107.0250, 21.6797, -93.8609



111.9220, 58.2125, -98.1556

# Sweetspot

The Sweet Spot groups the original color and five complimentary colors.



116.7210, -6.2715, 98.4687



217.3400, -2.1396, 33.0278



117.5160, 54.9616, 58.3065



105.1920, -1.0807, 20.0026



0.0000, 0.0000, 0.0000



128.0000, 0.0000, 0.0000



# Same Dimension

The Same Dimension uses a secret algorithm to generate beautiful new colors.



116.7210, -6.2715, 98.4687



104.3600, -8.5585, 132.1113



134.8260, -35.9032, 82.5906



106.9300, -0.4585, 7.0774



58.6510, -6.7299, 105.5461



16.7310, -1.8394, 30.0539



# Inverse Universe

The Inverse Universe completely reimagines the original color for something new.



116.7210, -6.2715, 98.4687



104.3600, -8.5585, 132.1113



156.1740, 35.9032, -82.5906



106.9300, -0.4585, 7.0774



58.6510, -6.7299, 105.5461



16.7310, -1.8394, 30.0539



# Previews

## White Background



This preview shows how the YUV color 116.7210, -6.2715, 98.4687 looks on a white background.

## Color Contrast Check

Large Text (above 18pt) WCAG AA ✓ Pass

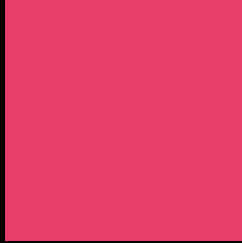
Any Text WCAG AA × Fail

Large Text (above 18pt) WCAG AAA × Fail

Any Text WCAG AAA × Fail



# Black Background



This preview shows how the YUV color 116.7210, -6.2715, 98.4687 looks on a black background.

## Color Contrast Check

Large Text (above 18pt) WCAG AA ✓ Pass

Any Text WCAG AA ✓ Pass

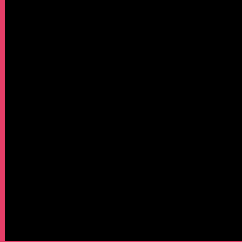
Large Text (above 18pt) WCAG AAA ✓ Pass

Any Text WCAG AAA × Fail

If you want to check with other color combinations, try the [Color Contrast Checker](#).

# YUV 116.7210, -6.2715, 98.4687

## Background



This preview shows how black text looks on a background with the YUV color 116.7210, -6.2715, 98.4687.



This preview shows how white text looks on a background with the YUV color 116.7210, -6.2715,



# Color Blindness Simulation

Color vision deficiency is a very complex topic, and I could not describe the different causes any better than Wikipedia does, so if you want to learn more, you should check out their [article about color blindness](#).

## Dichromacy



### Original Color

116.7210, -6.2715, 98.4687

### Protanopia

127.4390, 4.2206, -0.3850

### Deuteranopia

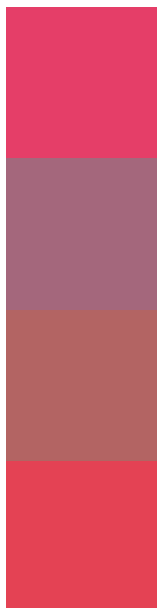
127.4080, -15.4841, 19.8132



## Tritanopia

116.5840, -21.9799, 96.8348

# Trichromacy



## Original Color

116.7210, -6.2715, 98.4687

## Protanomaly

123.6330, 0.1809, 35.4019

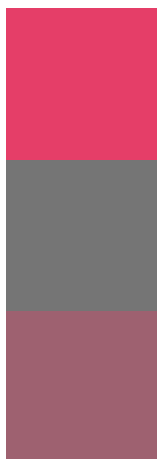
## Deuteranomaly

123.5070, -12.0820, 48.6674

## Tritanomaly

116.4900, -16.0176, 97.7943

# Monochromacy



## Original Color

116.7210, -6.2715, 98.4687

## Achromatopsia

117.0000, 0.0000, 0.0000

## Achromatomaly

116.9490, -2.4399, 36.0017

# CSS Examples

## Text

The CSS property to change the color of the text to YUV 116.7210, -6.2715, 98.4687 is called "color". The color property can be set on classes, ids or directly on the HTML element.

This example shows how text in the color `rgb(229, 62, 104)` looks like.

```
.text, #text, p{  
    color:rgb(229, 62, 104)  
}
```

If you want to add a text shadow in that color use the text-shadow property, you can generate a text shadow directly with our [CSS Text Shadow Generator](#).

Here you see how black text with a 4 pixel rgb(229, 62, 104) colored shadow looks like.

```
.shadow{ text-shadow: 4px 4px 2px rgb(229, 62, 104) }
```

## Border

The CSS property to change the border of an element to YUV 116.7210, -6.2715, 98.4687 is called "border". The border property can be set on classes, ids or directly on the HTML element.

This example shows the color as border, it can be applied via the CSS property "border" or "border-color".

```
.border, #border, table{ border:4px solid rgb(229, 62, 104) }
```



If only the border color should be changed use the property border-color.

```
.border{ border-color:rgb(229, 62, 104) }
```

If you want to add a box shadow in that color use:

Here you see how a box with a 4 pixel rgb(229, 62, 104) colored shadow looks like.

```
.boxshadow{ -moz-box-shadow:4px 4px 4px  
4px rgb(229, 62, 104); -webkit-box-  
shadow:4px 4px 4px 4px rgb(229, 62, 104);  
box-shadow:4px 4px 4px 4px rgb(229, 62,  
104) }
```

# Background

The CSS property to change the background color of an element to YUV 116.7210, -6.2715, 98.4687 is called "background". The background property can be set on classes, ids or directly on the HTML element.

```
.background, #background, body{  
background: rgb(229, 62, 104) }
```

If only the background color should be changed can be used:

```
.background{ background-color: rgb(229, 62,  
104) }
```

This example shows the color as background, it is applied via the CSS property "background".

To optimize and compress your CSS code, you can use our [online CSS compressor and optimizer](#) based on csstidy. If you want to create a linear or radial gradient as background or border, check our [CSS Gradient Generator](#).

Hey! You found this booklet interesting? Support Converting Colors with the new Membership Option!

The pro membership hides all ads, plus gives you double the colors in the color bucket, and more awesome pro features!

**[Learn more, Memberships starting at \\$2.50/m!](#)**

**Follow me  
on Twitter!**

@ConvertingColor