

Converting Colors

YUV(116.9710, 7.9023, 78.9554)

Have a look what the booklet for
YUV(116.9710, 7.9023, 78.9554)
contains.

YUV(116.9710, 7.9023, 78.9554)	3
<i>Conversions</i>	4
<i>Details</i>	6
<i>Harmonies</i>	12
<i>Previews</i>	24
<i>Color Blindness Simulation</i>	28
<i>CSS Examples</i>	31

Color

**YUV(116.9710, 7.9023,
78.9554)**

Conversions

Conversions Part 1

Format	Color
Hex	CF4485
RGB	207, 68, 133
RGB Percent	81%, 27%, 52%
CMY	0.1882, 0.7333, 0.4784
CMYK	0.00, 0.67, 0.36, 0.19
HSL	332°, 59%, 54%
HSV	332°, 67%, 81%
XYZ	32.0329, 19.0931, 24.1873
YIQ	116.9710, 61.9790, 49.6830

Conversions

Conversions Part 2

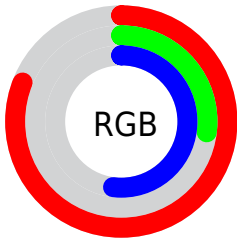
Format	Color
R_{YB}	207, 68, 133
Decimal	13583493
CIE _{Lab}	50.80, 60.04, -5.96
CIE _{LCh}	51, 60.336, 354.330
Yxy	19.0931, 0.4253, 0.2535
Android (android.graphics.Color)	4291773573 (0xFFCF4485)
YUV	116.9710, 7.9023, 78.9554
Hunter-Lab	43.6956, 54.3894, -2.2325

Details

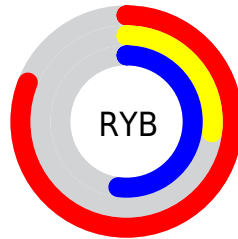
The YUV color **116.9710, 7.9023, 78.9554** is a dark color, and the websafe version is hex **CC3366**. The color can be described as middle muted rose. A complement of this color would be **158.0290, -7.9023, -78.9554**, and the grayscale version is **117.0000, 0.0000, 0.0000**.

A 20% lighter version of the original color is **170.8240, 7.4818, 73.8224**, and **53.8280, 14.8748, 82.5888** is the 20% darker color. If you saturate the color by 10%, you get **103.3900, 9.1747, 90.8660**, and if you desaturate by 10%, it is **130.5520, 6.6299, 67.0449**.

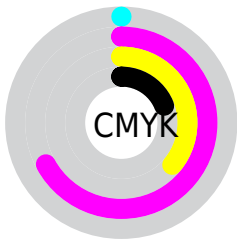
Distribution



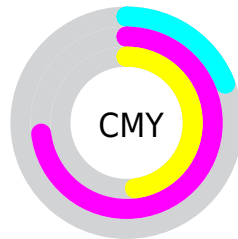
- Red (81%)
- Green (27%)
- Blue (52%)



- Red (81%)
- Yellow (27%)
- Blue (52%)



- Cyan (0%)
- Magenta (67%)
- Yellow (36%)
- Black (19%)



- Cyan (19%)
- Magenta (73%)
- Yellow (48%)

Brightness & Saturation Gradients

These gradients show how the YUV color 116.9710, 7.9023, 78.9554 changes by changing the brightness by 10 percent. The first figure shows a shift by +10% for each color and the second figure -10%.

Similar to the brightness gradients but the following saturation gradients show a change of the YUV color 116.9710, 7.9023, 78.9554 by changing the saturation by 10% instead.

■ 116.9710, 7.9023,
78.9554

■ 116.9710, 7.9023,
78.9554

255.0000, 0.0000,
0.0000

■ 86.3670, 10.6651,
79.4851

■ 170.8240, 7.4818,
73.8224

■ 53.8280, 14.8748,
82.5888

■ 190.4520, 11.6092,
56.6086

■ 42.5350, 9.1032,
67.0598

■ 210.0800, 15.7366,
39.3948

■ 31.6550, 3.6211,
52.0456

■ 228.5850, 13.0226,
23.1660

■ 21.4870, -1.7191,
38.1609

■ 246.1950, 4.3409,
7.7220

■ 10.2800, -4.5750,
20.8024

■ 0.0000, 0.0000,

0.0000

■ 116.9710, 7.9023,
78.9554

■ 116.9710, 7.9023,
78.9554

■ 103.3900, 9.1747,
90.8660

■ 130.5520, 6.6299,
67.0449

■ 90.3960, 10.1578,
102.2617

■ 143.5460, 5.6468,
55.6492

■ 76.8150, 11.4302,
114.1722

■ 157.1270, 4.3744,
43.7386

■ 72.9510, 11.8562,
117.5610

■ 170.7080, 3.1020,
31.8281

■ 183.7020, 2.1189,
20.4323

■ 197.2830, 0.8465,
8.5218

■ 210.8640, -0.4260,
-3.3887

■ 224.4450, -1.6984,
-15.2993

■ 237.4390, -2.6814,
-26.6950

Harmonies

Analogous

The Analogous color harmony consists of three colors that are next to each other on the color wheel.



123.5440, 28.8188, 43.3729



116.9710, 7.9023, 78.9554



114.7010, -16.1216, 84.4542

Triad

The Triadic color harmony groups three colors that are evenly spaced from another and form a triangle on the color wheel.



116.9710, 7.9023, 78.9554



108.2920, -53.3880, -2.8871



105.4360, 48.5921, -92.4674

Complementary

The Complementary color scheme is a pair of colors which are on the opposite of each other on the color wheel.



116.9710, 7.9023, 78.9554



158.0290, -7.9023, -78.9554

Split Complementary

Split-complementary colors differ from the complementary color scheme. The scheme consists of three colors, the original color and two neighbors of the complement color.



102.9960, 29.0890, -90.3275



116.9710, 7.9023, 78.9554



94.9570, -18.7128, -64.8603

Square

The Square scheme is like the rectangle color scheme, but the four colors are evenly spaced on the color wheel.



116.9710, 7.9023, 78.9554



113.2520, -55.8332, 34.8590



96.9540, 5.9387, -85.0287



101.8460, 60.2219, -89.3189

Rectangle

The Rectangle color scheme consists of four colors that form a rectangle on the color wheel.



116.9710, 7.9023, 78.9554



115.6830, -32.3817, 73.0690



96.9540, 5.9387, -85.0287



105.2420, 42.7717, -92.2972

Sweetspot

The Sweet Spot groups the original color and five complimentary colors.



116.9710, 7.9023, 78.9554



221.9850, 2.9654, 28.9542



105.3740, 50.1016, 30.3670



107.8650, 1.5456, 17.6584



0.0000, 0.0000, 0.0000



128.0000, 0.0000, 0.0000

Same Dimension

The Same Dimension uses a secret algorithm to generate beautiful new colors.



116.9710, 7.9023, 78.9554



120.9510, 11.8562, 117.5610



110.7350, -21.0684, 84.4244



97.8590, 0.5625, 6.2627



59.2380, 9.7427, 95.3843



14.4250, 2.2555, 23.3063

Inverse Universe

The Inverse Universe completely reimagines the original color for something new.



116.9710, 7.9023, 78.9554



120.9510, 11.8562, 117.5610



164.2650, 21.0684, -84.4244



97.8590, 0.5625, 6.2627



59.2380, 9.7427, 95.3843



14.4250, 2.2555, 23.3063

Previews

White Background



This preview shows how the YUV color 116.9710, 7.9023, 78.9554 looks on a white background.

Color Contrast Check

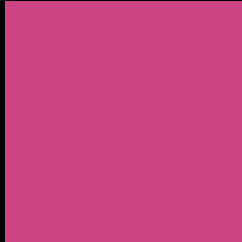
Large Text (above 18pt) WCAG AA ✓ Pass

Any Text WCAG AA ✗ Fail

Large Text (above 18pt) WCAG AAA ✗ Fail

Any Text WCAG AAA ✗ Fail

Black Background



This preview shows how the YUV color 116.9710, 7.9023, 78.9554 looks on a black background.

Color Contrast Check

Large Text (above 18pt) WCAG AA ✓ Pass

Any Text WCAG AA ✓ Pass

Large Text (above 18pt) WCAG AAA ✓ Pass

Any Text WCAG AAA × Fail

If you want to check with other color combinations, try the [Color Contrast Checker](#).

YUV 116.9710, 7.9023, 78.9554

Background



This preview shows how black text looks on a background with the YUV color 116.9710, 7.9023, 78.9554.



This preview shows how white text looks on a background with the YUV color 116.9710, 7.9023,

Color Blindness Simulation

Color vision deficiency is a very complex topic, and I could not describe the different causes any better than Wikipedia does, so if you want to learn more, you should check out their [article about color blindness](#).

Dichromacy



Original Color

116.9710, 7.9023, 78.9554

Protanopia

121.7700, 22.2984, -12.0763

Deuteranopia

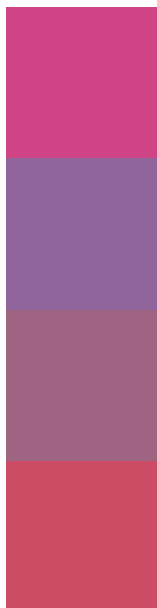
122.7990, 1.5781, 7.1923



Tritanopia

117.3470, -15.9471, 75.1177

Trichromacy



Original Color

116.9710, 7.9023, 78.9554

Protanomaly

120.0130, 17.2486, 21.0366

Deuteranomaly

120.9470, 3.9701, 33.3725

Tritanomaly

117.2360, -7.5113, 76.0920

Monochromacy



Original Color

116.9710, 7.9023, 78.9554

Achromatopsia

117.0000, 0.0000, 0.0000

Achromatomaly

116.9850, 2.9654, 28.9542

CSS Examples

Text

The CSS property to change the color of the text to YUV 116.9710, 7.9023, 78.9554 is called "color". The color property can be set on classes, ids or directly on the HTML element.

This example shows how text in the color `rgb(207, 68, 133)` looks like.

```
.text, #text, p{  
    color:rgb(207, 68, 133)  
}
```

If you want to add a text shadow in that color use the text-shadow property, you can generate a text shadow directly with our [CSS Text Shadow Generator](#).

Here you see how black text with a 4 pixel rgb(207, 68, 133) colored shadow looks like.

```
.shadow{ text-shadow: 4px 4px 2px rgb(207, 68, 133) }
```

Border

The CSS property to change the border of an element to YUV 116.9710, 7.9023, 78.9554 is called "border". The border property can be set on classes, ids or directly on the HTML element.

This example shows the color as border, it can be applied via the CSS property "border" or "border-color".

```
.border, #border, table{ border:4px solid rgb(207, 68, 133) }
```


If only the border color should be changed use the property `border-color`.

```
.border{ border-color:rgb(207, 68, 133) }
```

If you want to add a box shadow in that color use:

Here you see how a box with a 4 pixel `rgb(207, 68, 133)` colored shadow looks like.

```
.boxshadow{ -moz-box-shadow:4px 4px 4px  
4px rgb(207, 68, 133); -webkit-box-  
shadow:4px 4px 4px 4px rgb(207, 68, 133);  
box-shadow:4px 4px 4px 4px rgb(207, 68,  
133) }
```

Background

The CSS property to change the background color of an element to YUV 116.9710, 7.9023, 78.9554 is called "background". The background property can be set on classes, ids or directly on the HTML element.

```
.background, #background, body{  
background: rgb(207, 68, 133) }
```

If only the background color should be changed can be used:

```
.background{ background-color: rgb(207, 68,  
133) }
```

This example shows the color as background, it is applied via the CSS property "background".

To optimize and compress your CSS code, you can use our [online CSS compressor and optimizer](#) based on csstidy. If you want to create a linear or radial gradient as background or border, check our [CSS Gradient Generator](#).

Hey! You found this booklet interesting? Support Converting Colors with the new Membership Option!

The pro membership hides all ads, plus gives you double the colors in the color bucket, and more awesome pro features!

[Learn more, Memberships starting at \\$2.50/m!](#)

**Follow me
on Twitter!**

@ConvertingColor