

Converting Colors

YUV(117.0410, 1.9518,
120.9900)

Have a look what the booklet for
YUV(117.0410, 1.9518, 120.9900)
contains.

YUV(117.0410, 1.9518, 120.9900)	3
<i>Conversions</i>	4
<i>Details</i>	6
<i>Harmonies</i>	12
<i>Previews</i>	24
<i>Color Blindness Simulation</i>	28
<i>CSS Examples</i>	31

Color

**YUV(117.0410, 1.9518,
120.9900)**

Conversions

Conversions Part 1

Format	Color
Hex	FF2E79
RGB	255, 46, 121
RGB Percent	100%, 18%, 47%
CMY	0.0000, 0.8196, 0.5255
CMYK	0.00, 0.82, 0.53, 0.00
HSL	338°, 100%, 59%
HSV	338°, 82%, 100%
XYZ	45.6682, 24.5945, 20.4294
YIQ	117.0410, 100.4890, 67.6330

Conversions

Conversions Part 2

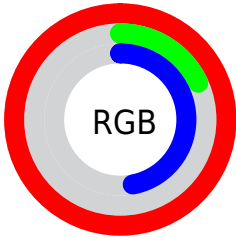
Format	Color
R_{YB}	255, 46, 121
Decimal	16723577
CIE _{Lab}	56.68, 78.35, 10.81
CIE _{LCh}	57, 79.092, 7.856
Yxy	24.5945, 0.5036, 0.2712
Android (android.graphics.Color)	4294913657 (0xFFFF2E79)
YUV	117.0410, 1.9518, 120.9900
Hunter-Lab	49.5928, 77.5866, 10.2909

Details

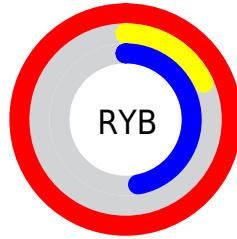
The YUV color **117.0410, 1.9518, 120.9900** is a dark color, and the websafe version is hex **FF0066**. The color can be described as middle washed rose. A complement of this color would be **183.9590, -1.9518, -120.9900**, and the grayscale version is **117.0000, 0.0000, 0.0000**.

A 20% lighter version of the original color is **163.4720, 4.6973, 80.2701**, and **65.4310, 3.7315, 110.1240** is the 20% darker color. If you saturate the color by 10%, you get **100.5420, 2.1978, 135.4597**, and if you desaturate by 10%, it is **134.1270, 1.4164, 106.0056**.

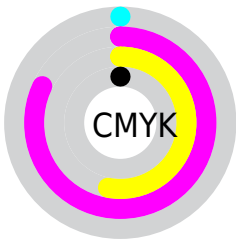
Distribution



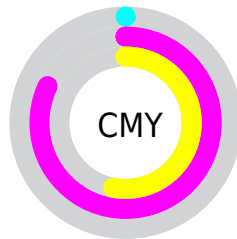
- Red (100%)
- Green (18%)
- Blue (47%)



- Red (100%)
- Yellow (18%)
- Blue (47%)



- Cyan (0%)
- Magenta (82%)
- Yellow (53%)
- Black (0%)



- Cyan (0%)
- Magenta (82%)
- Yellow (53%)

Brightness & Saturation Gradients

These gradients show how the YUV color 117.0410, 1.9518, 120.9900 changes by changing the brightness by 10 percent. The first figure shows a shift by +10% for each color and the second figure -10%.

Similar to the brightness gradients but the following saturation gradients show a change of the YUV color 117.0410, 1.9518, 120.9900 by changing the saturation by 10% instead.

■ 117.0410, 1.9518,
120.9900

■ 117.0410, 1.9518,
120.9900

■ 255.0000, 0.0000,
0.0000

■ 77.6210, 9.0608,
127.4974

■ 163.4720, 4.6973,
80.2701

■ 65.4310, 3.7315,
110.1240

■ 184.7470, 7.5197,
61.6119

■ 53.6540, -1.3084,
93.2654

■ 205.5490, 11.0683,
43.3685

■ 42.1050, -5.4748,
76.2069

■ 226.2370, 14.1802,
25.2252

■ 29.7580, -12.6987,
59.8482

■ 243.8470, 5.4984,
9.7812

■ 20.6740, -8.7133,
41.5049

■ 10.5790, -4.7224,

21.4172

■ 0.0000, 0.0000,
0.0000

■ 117.0410, 1.9518,
120.9900

■ 117.0410, 1.9518,
120.9900

■ 100.5420, 2.1978,
135.4597

■ 134.1270, 1.4164,
106.0056

■ 86.7330, 2.5966,
147.5702

■ 150.7400, 1.6072,
91.4360

■ 167.8260, 1.0718,
76.4516

■ 184.3250, 0.8258,
61.9820

■ 201.5250, 0.7272,
46.8976

218.0240, 0.4812,
32.4280

235.1100, -0.0542,
17.4435

251.7230, 0.1366,
2.8739

255.0000, 0.0000,
0.0000

Harmonies

Analogous

The Analogous color harmony consists of three colors that are next to each other on the color wheel.



130.2320, 28.9726, 87.4965



117.0410, 1.9518, 120.9900



123.4250, -34.2265, 104.8673

Triad

The Triadic color harmony groups three colors that are evenly spaced from another and form a triangle on the color wheel.



117.0410, 1.9518, 120.9900



112.2140, -55.3215, -36.1447



121.2290, 65.9491, -106.3178

Complementary

The Complementary color scheme is a pair of colors which are on the opposite of each other on the color wheel.



117.0410, 1.9518, 120.9900



183.9590, -1.9518, -120.9900

Split Complementary

Split-complementary colors differ from the complementary color scheme. The scheme consists of three colors, the original color and two neighbors of the complement color.



121.9350, 48.3460, -106.9370



117.0410, 1.9518, 120.9900



104.8010, -12.2269, -91.9105

Square

The Square scheme is like the rectangle color scheme, but the four colors are evenly spaced on the color wheel.



117.0410, 1.9518, 120.9900



125.8450, -62.0416, 19.4299



114.8840, 18.7912, -100.7533



110.6630, 71.1581, -97.0515

Rectangle

The Rectangle color scheme consists of four colors that form a rectangle on the color wheel.



117.0410, 1.9518, 120.9900



125.6540, -61.9474, 82.7414



114.8840, 18.7912, -100.7533



123.3490, 63.9179, -108.1771

Sweetspot

The Sweet Spot groups the original color and five complimentary colors.



117.0410, 1.9518, 120.9900



212.7580, 0.6123, 37.0462



109.2940, 71.8331, 60.2552



102.2570, 0.3663, 22.5766



0.0000, 0.0000, 0.0000



128.0000, 0.0000, 0.0000

Same Dimension

The Same Dimension uses a secret algorithm to generate beautiful new colors.



117.0410, 1.9518, 120.9900



90.0100, 2.4601, 144.6962



124.9270, -38.9110, 114.0740



119.3430, -0.1691, 7.5922



64.9750, 1.9843, 110.5239



21.7580, 0.6123, 37.0462

Inverse Universe

The Inverse Universe completely reimagines the original color for something new.



117.0410, 1.9518, 120.9900



90.0100, 2.4601, 144.6962



176.0730, 38.9110, -114.0740



119.3430, -0.1691, 7.5922



64.9750, 1.9843, 110.5239



21.7580, 0.6123, 37.0462

Previews

White Background



This preview shows how the YUV color 117.0410, 1.9518, 120.9900 looks on a white background.

Color Contrast Check

Large Text (above 18pt) WCAG AA ✓ Pass

Any Text WCAG AA × Fail

Large Text (above 18pt) WCAG AAA × Fail

Any Text WCAG AAA × Fail

Black Background



This preview shows how the YUV color 117.0410, 1.9518, 120.9900 looks on a black background.

Color Contrast Check

Large Text (above 18pt) WCAG AA ✓ Pass

Any Text WCAG AA ✓ Pass

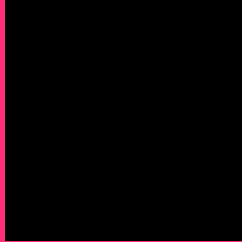
Large Text (above 18pt) WCAG AAA ✓ Pass

Any Text WCAG AAA × Fail

If you want to check with other color combinations, try the [Color Contrast Checker](#).

YUV 117.0410, 1.9518, 120.9900

Background



This preview shows how black text looks on a background with the YUV color 117.0410, 1.9518, 120.9900.



This preview shows how white text looks on a background with the YUV color 117.0410, 1.9518,

Color Blindness Simulation

Color vision deficiency is a very complex topic, and I could not describe the different causes any better than Wikipedia does, so if you want to learn more, you should check out their [article about color blindness](#).

Dichromacy



Original Color

117.0410, 1.9518, 120.9900

Protanopia

136.8540, 14.8620, -6.8880

Deuteranopia

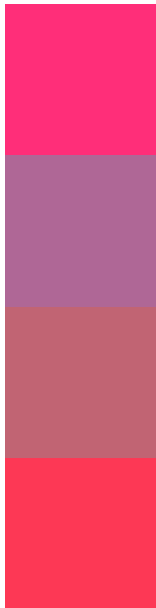
136.7930, -12.7159, 18.5985



Tritanopia

119.0380, -27.1337, 116.6077

Trichromacy



Original Color

117.0410, 1.9518, 120.9900

Protanomaly

129.8860, 9.9162, 39.5650

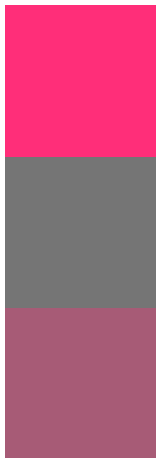
Deuteranomaly

129.5170, -7.1569, 55.6746

Tritanomaly

118.2090, -16.3720, 118.2117

Monochromacy



Original Color

117.0410, 1.9518, 120.9900

Achromatopsia

117.0000, 0.0000, 0.0000

Achromatomaly

116.8020, 0.5906, 44.0236

CSS Examples

Text

The CSS property to change the color of the text to YUV 117.0410, 1.9518, 120.9900 is called "color". The color property can be set on classes, ids or directly on the HTML element.

This example shows how text in the color `rgb(255, 46, 121)` looks like.

```
.text, #text, p{  
    color:rgb(255, 46, 121)  
}
```

If you want to add a text shadow in that color use the text-shadow property, you can generate a text shadow directly with our [CSS Text Shadow Generator](#).

Here you see how black text with a 4 pixel rgb(255, 46, 121) colored shadow looks like.

```
.shadow{ text-shadow: 4px 4px 2px rgb(255, 46, 121) }
```

Border

The CSS property to change the border of an element to YUV 117.0410, 1.9518, 120.9900 is called "border". The border property can be set on classes, ids or directly on the HTML element.

This example shows the color as border, it can be applied via the CSS property "border" or "border-color".

```
.border, #border, table{ border:4px solid rgb(255, 46, 121) }
```


If only the border color should be changed use the property `border-color`.

```
.border{ border-color:rgb(255, 46, 121) }
```

If you want to add a box shadow in that color use:

Here you see how a box with a 4 pixel `rgb(255, 46, 121)` colored shadow looks like.

```
.boxshadow{ -moz-box-shadow:4px 4px 4px 4px rgb(255, 46, 121); -webkit-box-shadow:4px 4px 4px 4px rgb(255, 46, 121); box-shadow:4px 4px 4px 4px rgb(255, 46, 121) }
```

Background

The CSS property to change the background color of an element to YUV 117.0410, 1.9518, 120.9900 is called "background". The background property can be set on classes, ids or directly on the HTML element.

```
.background, #background, body{  
background: rgb(255, 46, 121) }
```

If only the background color should be changed can be used:

```
.background{ background-color: rgb(255, 46,  
121) }
```

This example shows the color as background, it is applied via the CSS property "background".

To optimize and compress your CSS code, you can use our [online CSS compressor and optimizer](#) based on csstidy. If you want to create a linear or radial gradient as background or border, check our [CSS Gradient Generator](#).

Hey! You found this booklet interesting? Support Converting Colors with the new Membership Option!

The pro membership hides all ads, plus gives you double the colors in the color bucket, and more awesome pro features!

[Learn more, Memberships starting at \\$2.50/m!](#)

**Follow me
on Twitter!**

@ConvertingColor