

Converting Colors

YUV(117.7220, -25.0059,
40.5858)

Have a look what the booklet for
YUV(117.7220, -25.0059, 40.5858)
contains.

YUV(117.7220, -25.0059, 40.5858)	3
<i>Conversions</i>	4
<i>Details</i>	6
<i>Harmonies</i>	12
<i>Previews</i>	24
<i>Color Blindness Simulation</i>	28
<i>CSS Examples</i>	31

Color

**YUV(117.7220, -25.0059,
40.5858)**

Conversions

Conversions Part 1

Format	Color
Hex	A46843
RGB	164, 104, 67
RGB Percent	64%, 41%, 26%
CMY	0.3569, 0.5922, 0.7373
CMYK	0.00, 0.37, 0.59, 0.36
HSL	23°, 42%, 45%
HSV	23°, 59%, 64%
XYZ	21.2733, 18.1984, 7.7016
YIQ	117.7220, 47.6370, 1.2130

Conversions

Conversions Part 2

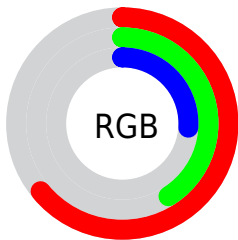
Format	Color
RYB	164, 127, 67
Decimal	10774595
CIELab	49.74, 20.23, 30.63
CIELCh	50, 36.705, 56.549
Yxy	18.1984, 0.4510, 0.3858
Android (android.graphics.Color)	4288964675 (0xFFA46843)
YUV	117.7220, -25.0059, 40.5858
Hunter-Lab	42.6596, 14.3593, 19.1577

Details

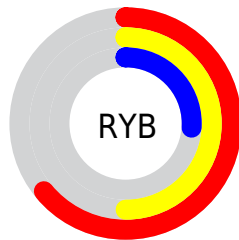
The YUV color **117.7220, -25.0059, 40.5858** is a dark color, and the websafe version is hex **996633**. A complement of this color would be **113.2780, 25.0059, -40.5858**, and the grayscale version is **118.0000, 0.0000, 0.0000**.

A 20% lighter version of the original color is **171.1740, -27.2008, 44.5744**, and **67.6720, -22.5163, 35.3677** is the 20% darker color. If you saturate the color by 10%, you get **110.0280, -29.1008, 47.3334**, and if you desaturate by 10%, it is **125.4160, -20.9111, 33.8382**.

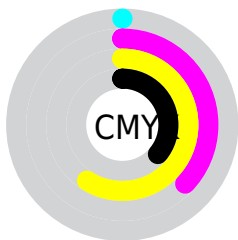
Distribution



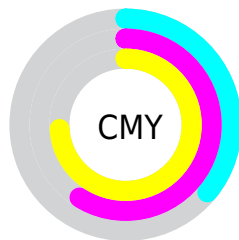
- Red (64%)
- Green (41%)
- Blue (26%)



- Red (64%)
- Yellow (50%)
- Blue (26%)



- Cyan (0%)
- Magenta (37%)
- Yellow (59%)
- Black (36%)



- Cyan (36%)
- Magenta (59%)
- Yellow (74%)

Brightness & Saturation Gradients

These gradients show how the YUV color 117.7220, -25.0059, 40.5858 changes by changing the brightness by 10 percent. The first figure shows a shift by +10% for each color and the second figure -10%.

Similar to the brightness gradients but the following saturation gradients show a change of the YUV color 117.7220, -25.0059, 40.5858 by changing the saturation by 10% instead.

■ 117.7220,
-25.0059, 40.5858

■ 117.7220,
-25.0059, 40.5858

255.0000, 0.0000,
0.0000

■ 92.6400, -23.9795,
38.0267

■ 171.1740,
-27.2008, 44.5744

■ 67.6720, -22.5163,
35.3677

■ 198.3700,
-27.7904, 47.0335

■ 44.4760, -21.9267,
32.9085

■ 218.6670,
-24.9788, 31.8640

■ 24.0760, -11.8695,
27.1203

■ 238.8820,
-21.1408, 14.1355

■ 9.9810, -4.4276,
20.1877

■ 251.4660,
-13.5407, 3.0993

■ 0.0000, 0.0000,
0.0000

254.6580, -1.3104,

0.2999

■ 117.7220,
-25.0059, 40.5858

■ 117.7220,
-25.0059, 40.5858

■ 110.0280,
-29.1008, 47.3334

■ 125.4160,
-20.9111, 33.8382

■ 102.2200,
-33.6325, 54.1811

■ 133.2240,
-16.3794, 26.9906

■ 94.5260, -37.7273,
60.9287

■ 140.9180,
-12.2846, 20.2429

■ 86.1310, -41.9696,
68.2911

■ 149.3130, -8.0423,
12.8805

■ 86.0170, -42.4064,
68.3911

■ 157.0070, -3.9475,
6.1329

■ 164.7010, 0.1474,
-0.6148

■ 172.5090, 4.6791,
-7.4624

■ 180.2030, 8.7739,
-14.2100

■ 188.0110, 13.3056,
-21.0576

Harmonies

Analogous

The Analogous color harmony consists of three colors that are next to each other on the color wheel.



119.1760, -13.3978, 50.7116



117.7220, -25.0059, 40.5858



115.6350, -29.8931, 21.3681

Triad

The Triadic color harmony groups three colors that are evenly spaced from another and form a triangle on the color wheel.



117.7220, -25.0059, 40.5858



91.5400, 10.5798, -80.2806



119.9650, 26.6393, -4.3543

Complementary

The Complementary color scheme is a pair of colors which are on the opposite of each other on the color wheel.



117.7220, -25.0059, 40.5858



113.2780, 25.0059, -40.5858

Split Complementary

Split-complementary colors differ from the complementary color scheme. The scheme consists of three colors, the original color and two neighbors of the complement color.



109.1660, 34.9212, -47.5036



117.7220, -25.0059, 40.5858



95.1880, 24.5573, -83.4799

Square

The Square scheme is like the rectangle color scheme, but the four colors are evenly spaced on the color wheel.



117.7220, -25.0059, 40.5858



107.5880, -12.1219, -32.0877



95.6900, 36.6348, -83.9201



122.1880, 15.1903, 27.8991

Rectangle

The Rectangle color scheme consists of four colors that form a rectangle on the color wheel.



117.7220, -25.0059, 40.5858



113.8780, -28.5339, 5.3690



95.6900, 36.6348, -83.9201



117.0990, 30.0242, -16.7498

Sweetspot

The Sweet Spot groups the original color and five complimentary colors.



117.7220, -25.0059, 40.5858



195.5800, -9.6529, 16.1543



102.9570, 12.3462, 53.5347



96.1600, -5.9949, 9.5067



235.0000, 0.0000, 0.0000



107.0000, 0.0000, 0.0000

Same Dimension

The Same Dimension uses a secret algorithm to generate beautiful new colors.



117.7220, -25.0059, 40.5858



141.4940, -39.1905, 63.5878



145.3110, -38.6073, 16.3903



78.0390, -2.4842, 3.4738



75.6400, -37.2905, 60.8287



9.4910, -4.6791, 7.4624

Inverse Universe

The Inverse Universe completely reimagines the original color for something new.



113.2780, 25.0059, -40.5858



134.5060, 39.1905, -63.5878



85.6890, 38.6073, -16.3903



76.9610, 2.4842, -3.4738



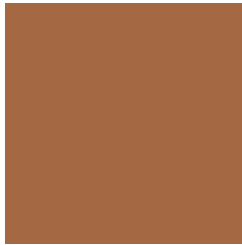
69.3600, 37.2905, -60.8287



8.5090, 4.6791, -7.4624

Previews

White Background



This preview shows how the YUV color 117.7220, -25.0059, 40.5858 looks on a white background.

Color Contrast Check

Large Text (above 18pt) WCAG AA ✓ Pass

Any Text WCAG AA ✓ Pass

Large Text (above 18pt) WCAG AAA ✓ Pass

Any Text WCAG AAA × Fail

Black Background



This preview shows how the YUV color 117.7220, -25.0059, 40.5858 looks on a black background.

Color Contrast Check

Large Text (above 18pt) WCAG AA ✓ Pass

Any Text WCAG AA ✓ Pass

Large Text (above 18pt) WCAG AAA ✓ Pass

Any Text WCAG AAA × Fail

If you want to check with other color combinations, try the [Color Contrast Checker](#).

YUV 117.7220, -25.0059, 40.5858

Background



This preview shows how black text looks on a background with the YUV color 117.7220, -25.0059, 40.5858.



This preview shows how white text looks on a background with the YUV color 117.7220, -25.0059,

Color Blindness Simulation

Color vision deficiency is a very complex topic, and I could not describe the different causes any better than Wikipedia does, so if you want to learn more, you should check out their [article about color blindness](#).

Dichromacy



Original Color

117.7220, -25.0059, 40.5858

Protanopia

116.9310, -22.1510, 11.4615

Deuteranopia

117.0960, -25.6833, 24.4718



Tritanopia

120.1300, -6.9661, 41.1050

Trichromacy



Original Color

117.7220, -25.0059, 40.5858

Protanomaly

117.3560, -23.3465, 21.6128

Deuteranomaly

117.5420, -25.4102, 30.2197

Tritanomaly

119.4090, -13.5126, 40.8603

Monochromacy



Original Color

117.7220, -25.0059, 40.5858

Achromatopsia

118.0000, 0.0000, 0.0000

Achromatomaly

117.9820, -9.3581, 14.9248

CSS Examples

Text

The CSS property to change the color of the text to YUV 117.7220, -25.0059, 40.5858 is called "color". The color property can be set on classes, ids or directly on the HTML element.

This example shows how text in the color `rgb(164, 104, 67)` looks like.

```
.text, #text, p{  
    color:rgb(164, 104, 67)  
}
```

If you want to add a text shadow in that color use the text-shadow property, you can generate a text shadow directly with our [CSS Text Shadow Generator](#).

Here you see how black text with a 4 pixel rgb(164, 104, 67) colored shadow looks like.

```
.shadow{ text-shadow: 4px 4px 2px rgb(164, 104, 67) }
```

Border

The CSS property to change the border of an element to YUV 117.7220, -25.0059, 40.5858 is called "border".

The border property can be set on classes, ids or directly on the HTML element.

This example shows the color as border, it can be applied via the CSS property "border" or "border-color".

```
.border, #border, table{ border:4px solid rgb(164, 104, 67) }
```


If only the border color should be changed use the property border-color.

```
.border{ border-color:rgb(164, 104, 67) }
```

If you want to add a box shadow in that color use:

Here you see how a box with a 4 pixel rgb(164, 104, 67) colored shadow looks like.

```
.boxshadow{ -moz-box-shadow:4px 4px 4px  
4px rgb(164, 104, 67); -webkit-box-  
shadow:4px 4px 4px 4px rgb(164, 104, 67);  
box-shadow:4px 4px 4px 4px rgb(164, 104,  
67) }
```

Background

The CSS property to change the background color of an element to YUV 117.7220, -25.0059, 40.5858 is called "background". The background property can be set on classes, ids or directly on the HTML element.

```
.background, #background, body{  
background: rgb(164, 104, 67) }
```

If only the background color should be changed can be used:

```
.background{ background-color: rgb(164,  
104, 67) }
```

This example shows the color as background, it is applied via the CSS property "background".

To optimize and compress your CSS code, you can use our [online CSS compressor and optimizer](#) based on csstidy. If you want to create a linear or radial gradient as background or border, check our [CSS Gradient Generator](#).

Hey! You found this booklet interesting? Support Converting Colors with the new Membership Option!

The pro membership hides all ads, plus gives you double the colors in the color bucket, and more awesome pro features!

[Learn more, Memberships starting at \\$2.50/m!](#)

**Follow me
on Twitter!**

@ConvertingColor