

Converting Colors

YUV(118.0320, -7.9038,
108.7199)

Have a look what the booklet for
YUV(118.0320, -7.9038, 108.7199)
contains.

YUV(118.0320, -7.9038, 108.7199)	3
<i>Conversions</i>	4
<i>Details</i>	6
<i>Harmonies</i>	12
<i>Previews</i>	24
<i>Color Blindness Simulation</i>	28
<i>CSS Examples</i>	31

Color

**YUV(118.0320, -7.9038,
108.7199)**

Conversions

Conversions Part 1

Format	Color
Hex	F23A66
RGB	242, 58, 102
RGB Percent	95%, 23%, 40%
CMY	0.0510, 0.7725, 0.6000
CMYK	0.00, 0.76, 0.58, 0.05
HSL	346°, 88%, 59%
HSV	346°, 76%, 95%
XYZ	40.5293, 22.8627, 14.8472
YIQ	118.0320, 95.5400, 52.6920

Conversions

Conversions Part 2

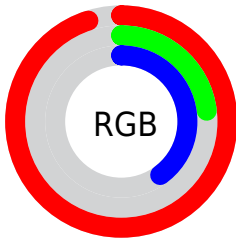
Format	Color
R_{YB}	242, 58, 102
Decimal	15874662
CIE _{Lab}	54.93, 70.60, 19.35
CIE _{LCh}	55, 73.209, 15.328
Yxy	22.8627, 0.5180, 0.2922
Android (android.graphics.Color)	4294064742 (0xFFFF23A66)
YUV	118.0320, -7.9038, 108.7199
Hunter-Lab	47.8149, 67.6255, 15.0601

Details

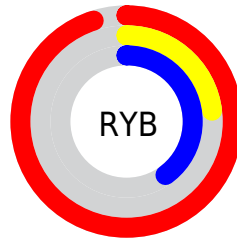
The YUV color **118.0320, -7.9038, 108.7199** is a dark color, and the websafe version is hex **FF3366**. The color can be described as middle washed rose. A complement of this color would be **181.9680, 7.9038, -108.7199**, and the grayscale version is **118.0000, 0.0000, 0.0000**.

A 20% lighter version of the original color is **164.1270, -5.4856, 79.6956**, and **59.9050, -1.9252, 104.4463** is the 20% darker color. If you saturate the color by 10%, you get **101.8920, -8.8208, 122.8747**, and if you desaturate by 10%, it is **134.1720, -6.9868, 94.5652**.

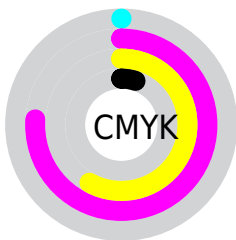
Distribution



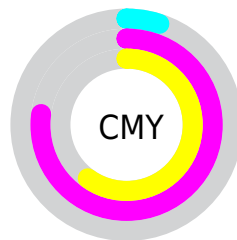
- Red (95%)
- Green (23%)
- Blue (40%)



- Red (95%)
- Yellow (23%)
- Blue (40%)



- Cyan (0%)
- Magenta (76%)
- Yellow (58%)
- Black (5%)



- Cyan (5%)
- Magenta (77%)
- Yellow (60%)

Brightness & Saturation Gradients

These gradients show how the YUV color 118.0320, -7.9038, 108.7199 changes by changing the brightness by 10 percent. The first figure shows a shift by +10% for each color and the second figure -10%.

Similar to the brightness gradients but the following saturation gradients show a change of the YUV color 118.0320, -7.9038, 108.7199 by changing the saturation by 10% instead.

■ 118.0320, -7.9038,
108.7199

■ 118.0320, -7.9038,
108.7199

255.0000, 0.0000,
0.0000

■ 76.9650, 0.5103,
116.6717

■ 164.1270, -5.4856,
79.6956

■ 59.9050, -1.9252,
104.4463

■ 184.7010, -2.8106,
61.6522

■ 48.2420, -6.5283,
87.4878

■ 204.9160, 1.0274,
43.9237

■ 36.5790, -11.1314,
70.5292

■ 225.7180, 4.5760,
25.6803

■ 25.9420, -11.8034,
52.6709

■ 245.6080, 4.6303,
8.2368

■ 16.9720, -7.3812,
34.2276

■ 4.1860, -2.0637,

8.6069

■ 0.0000, 0.0000,
0.0000

■ 118.0320, -7.9038,
108.7199

■ 118.0320, -7.9038,
108.7199

■ 101.8920, -8.8208,
122.8747

■ 134.1720, -6.9868,
94.5652

■ 85.6380, -10.1745,
137.1295

■ 150.4260, -5.6330,
80.3104

■ 78.9700, -10.3382,
142.9773

■ 167.1530, -5.0054,
65.6408

■ 183.4070, -3.6517,
51.3861

■ 199.5470, -2.7347,
37.2313

215.6870, -1.8177,
23.0765

231.9410, -0.4639,
8.8217

248.6680, 0.1637,
-5.8478

251.1130, 1.9163,
-7.9921

Harmonies

Analogous

The Analogous color harmony consists of three colors that are next to each other on the color wheel.



124.5500, 19.9419, 90.7257



118.0320, -7.9038, 108.7199



122.7190, -40.2875, 88.8234

Triad

The Triadic color harmony groups three colors that are evenly spaced from another and form a triangle on the color wheel.



118.0320, -7.9038, 108.7199



105.2840, -38.1010, -52.8691



115.9460, 68.5536, -101.6846

Complementary

The Complementary color scheme is a pair of colors which are on the opposite of each other on the color wheel.



118.0320, -7.9038, 108.7199



181.9680, 7.9038, -108.7199

Split Complementary

Split-complementary colors differ from the complementary color scheme. The scheme consists of three colors, the original color and two neighbors of the complement color.



117.3530, 51.0980, -102.9186



118.0320, -7.9038, 108.7199



103.8040, -3.3544, -91.0361

Square

The Square scheme is like the rectangle color scheme, but the four colors are evenly spaced on the color wheel.



118.0320, -7.9038, 108.7199



120.1640, -59.2409, 7.7492



112.5020, 24.8955, -98.6643



110.7840, 71.0985, -77.8636

Rectangle

The Rectangle color scheme consists of four colors that form a rectangle on the color wheel.



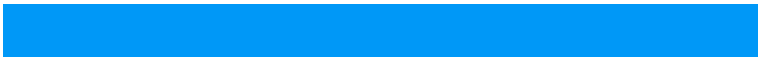
118.0320, -7.9038, 108.7199



122.8970, -60.5882, 66.7423



112.5020, 24.8955, -98.6643



117.3820, 63.9017, -102.9440

Sweetspot

The Sweet Spot groups the original color and five complimentary colors.



118.0320, -7.9038, 108.7199



215.2370, -2.5818, 34.8722



120.2380, 60.0287, 66.4433



103.6760, -1.8123, 21.3321



0.0000, 0.0000, 0.0000



128.0000, 0.0000, 0.0000

Same Dimension

The Same Dimension uses a secret algorithm to generate beautiful new colors.



118.0320, -7.9038, 108.7199



98.6380, -10.1745, 137.1295



140.0180, -40.4349, 89.4382



111.9300, -0.4585, 7.0774



60.0320, -7.9038, 108.7199



18.2260, -2.5764, 33.1278

Inverse Universe

The Inverse Universe completely reimagines the original color for something new.



118.0320, -7.9038, 108.7199



98.6380, -10.1745, 137.1295



159.9820, 40.4349, -89.4382



111.9300, -0.4585, 7.0774



60.0320, -7.9038, 108.7199



18.2260, -2.5764, 33.1278

Previews

White Background



This preview shows how the YUV color 118.0320, -7.9038, 108.7199 looks on a white background.

Color Contrast Check

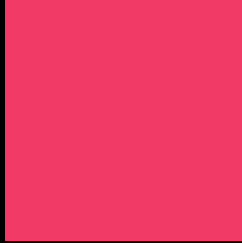
Large Text (above 18pt) WCAG AA ✓ Pass

Any Text WCAG AA × Fail

Large Text (above 18pt) WCAG AAA × Fail

Any Text WCAG AAA × Fail

Black Background



This preview shows how the YUV color 118.0320, -7.9038, 108.7199 looks on a black background.

Color Contrast Check

Large Text (above 18pt) WCAG AA ✓ Pass

Any Text WCAG AA ✓ Pass

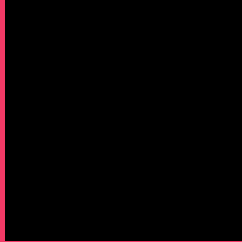
Large Text (above 18pt) WCAG AAA ✓ Pass

Any Text WCAG AAA × Fail

If you want to check with other color combinations, try the [Color Contrast Checker](#).

YUV 118.0320, -7.9038, 108.7199

Background



This preview shows how black text looks on a background with the YUV color 118.0320, -7.9038, 108.7199.

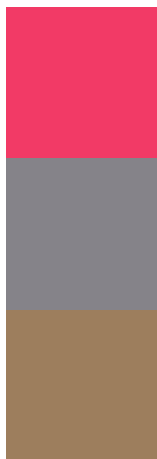


This preview shows how white text looks on a background with the YUV color 118.0320, -7.9038,

Color Blindness Simulation

Color vision deficiency is a very complex topic, and I could not describe the different causes any better than Wikipedia does, so if you want to learn more, you should check out their [article about color blindness](#).

Dichromacy



Original Color

118.0320, -7.9038, 108.7199

Protanopia

132.2820, 2.3260, 0.6297

Deuteranopia

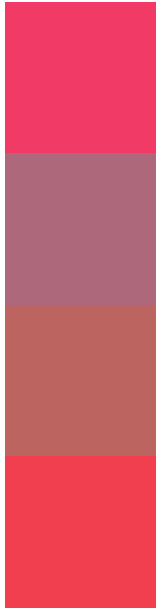
131.5070, -18.9840, 22.3574



Tritanopia

118.2540, -24.7752, 106.7712

Trichromacy



Original Color

118.0320, -7.9038, 108.7199

Protanomaly

126.9110, -1.4351, 40.4201

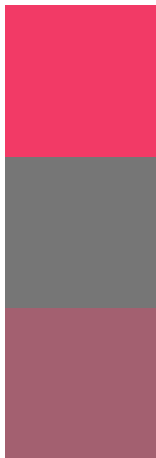
Deuteranomaly

126.4430, -15.0084, 53.9855

Tritanomaly

118.1600, -18.8129, 107.7307

Monochromacy



Original Color

118.0320, -7.9038, 108.7199

Achromatopsia

118.0000, 0.0000, 0.0000

Achromatomaly

117.8570, -2.8875, 39.5904

CSS Examples

Text

The CSS property to change the color of the text to YUV 118.0320, -7.9038, 108.7199 is called "color". The color property can be set on classes, ids or directly on the HTML element.

This example shows how text in the color `rgb(242, 58, 102)` looks like.

```
.text, #text, p{  
    color:rgb(242, 58, 102)  
}
```

If you want to add a text shadow in that color use the text-shadow property, you can generate a text shadow directly with our [CSS Text Shadow Generator](#).

Here you see how black text with a 4 pixel rgb(242, 58, 102) colored shadow looks like.

```
.shadow{ text-shadow: 4px 4px 2px rgb(242, 58, 102) }
```

Border

The CSS property to change the border of an element to YUV 118.0320, -7.9038, 108.7199 is called "border".

The border property can be set on classes, ids or directly on the HTML element.

This example shows the color as border, it can be applied via the CSS property "border" or "border-color".

```
.border, #border, table{ border:4px solid rgb(242, 58, 102) }
```


If only the border color should be changed use the property `border-color`.

```
.border{ border-color:rgb(242, 58, 102) }
```

If you want to add a box shadow in that color use:

Here you see how a box with a 4 pixel `rgb(242, 58, 102)` colored shadow looks like.

```
.boxshadow{ -moz-box-shadow:4px 4px 4px  
4px rgb(242, 58, 102); -webkit-box-  
shadow:4px 4px 4px 4px rgb(242, 58, 102);  
box-shadow:4px 4px 4px 4px rgb(242, 58,  
102) }
```

Background

The CSS property to change the background color of an element to YUV 118.0320, -7.9038, 108.7199 is called "background". The background property can be set on classes, ids or directly on the HTML element.

```
.background, #background, body{  
background: rgb(242, 58, 102) }
```

If only the background color should be changed can be used:

```
.background{ background-color: rgb(242, 58,  
102) }
```

This example shows the color as background, it is applied via the CSS property "background".

To optimize and compress your CSS code, you can use our [online CSS compressor and optimizer](#) based on csstidy. If you want to create a linear or radial gradient as background or border, check our [CSS Gradient Generator](#).

Hey! You found this booklet interesting? Support Converting Colors with the new Membership Option!

The pro membership hides all ads, plus gives you double the colors in the color bucket, and more awesome pro features!

[Learn more, Memberships starting at \\$2.50/m!](#)

**Follow me
on Twitter!**

@ConvertingColor