

Converting Colors

YUV(118.1670, -9.9423,
15.6395)

Have a look what the booklet for
YUV(118.1670, -9.9423, 15.6395)
contains.

YUV(118.1670, -9.9423, 15.6395)	3
<i>Conversions</i>	4
<i>Details</i>	6
<i>Harmonies</i>	12
<i>Previews</i>	24
<i>Color Blindness Simulation</i>	28
<i>CSS Examples</i>	31

Color

**YUV(118.1670, -9.9423,
15.6395)**

Conversions

Conversions Part 1

Format	Color
Hex	887162
RGB	136, 113, 98
RGB Percent	53%, 44%, 38%
CMY	0.4667, 0.5569, 0.6157
CMYK	0.00, 0.17, 0.28, 0.47
HSL	24°, 16%, 46%
HSV	24°, 28%, 53%
XYZ	18.2631, 17.9263, 14.0528
YIQ	118.1670, 18.5230, 0.2110

Conversions

Conversions Part 2

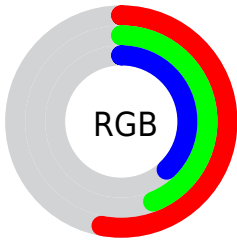
Format	Color
RYB	136, 123, 98
Decimal	8941922
CIELab	49.41, 6.60, 11.70
CIElCh	49, 13.431, 60.573
Yxy	17.9263, 0.3635, 0.3568
Android (android.graphics.Color)	4287132002 (0xFF887162)
YUV	118.1670, -9.9423, 15.6395
Hunter-Lab	42.3395, 2.9015, 9.9588

Details

The YUV color **118.1670, -9.9423, 15.6395** is a dark color, and the websafe version is hex **996666**. A complement of this color would be **115.8330, 9.9423, -15.6395**, and the grayscale version is **118.0000, 0.0000, 0.0000**.

A 20% lighter version of the original color is **170.6510, -10.6739, 16.9691**, and **69.4980, -8.6265, 13.5953** is the 20% darker color. If you saturate the color by 10%, you get **111.8750, -13.7424, 21.1576**, and if you desaturate by 10%, it is **124.4590, -6.1423, 10.1215**.

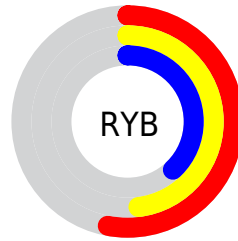
Distribution



Red (53%)

Green (44%)

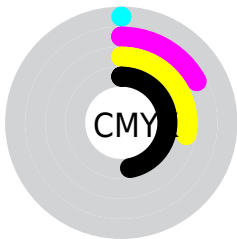
Blue (38%)



Red (53%)

Yellow (48%)

Blue (38%)

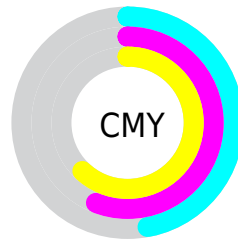


Cyan (0%)

Magenta (17%)

Yellow (28%)

Black (47%)



Cyan (47%)

Magenta (56%)

Yellow (62%)

Brightness & Saturation Gradients

These gradients show how the YUV color 118.1670, -9.9423, 15.6395 changes by changing the brightness by 10 percent. The first figure shows a shift by +10% for each color and the second figure -10%.

Similar to the brightness gradients but the following saturation gradients show a change of the YUV color 118.1670, -9.9423, 15.6395 by changing the saturation by 10% instead.

■ 118.1670, -9.9423,
15.6395

■ 118.1670, -9.9423,
15.6395

255.0000, 0.0000,
0.0000

■ 93.5690, -9.6475,
14.4100

■ 170.6510,
-10.6739, 16.9691

■ 69.4980, -8.6265,
13.5953

■ 197.8360,
-11.2581, 17.6838

■ 47.1990, -8.4791,
12.9805

■ 226.1350,
-11.4056, 18.2986

■ 26.1450, -9.9315,
12.1508

■ 248.1550, -8.4574,
6.0031

■ 3.2890, -1.6215,
6.7625

■ 0.0000, 0.0000,
0.0000

■ 118.1670, -9.9423,
15.6395

■ 118.1670, -9.9423,
15.6395

■ 111.8750,
-13.7424, 21.1576

■ 124.4590, -6.1423,
10.1215

■ 105.6970,
-17.1056, 26.5757

■ 130.6370, -2.7790,
4.7034

■ 98.8180, -20.6163,
32.6086

■ 137.5160, 0.7316,
-1.3295

■ 92.6400, -23.9795,
38.0267

■ 143.6940, 4.0949,
-6.7476

■ 86.3480, -27.7796,
43.5448

■ 149.9860, 7.8949,
-12.2657

■ 80.0560, -31.5796,
49.0629

■ 156.2780, 11.6949,
-17.7838

■ 73.2910, -34.6535,
54.9958

■ 163.0430, 14.7688,
-23.7167

■ 72.3620, -35.6745,

■ 169.3350, 18.5688,

55.8105

-29.2348

■ 175.5130, 21.9321,
-34.6529

Harmonies

Analogous

The Analogous color harmony consists of three colors that are next to each other on the color wheel.



118.8130, -6.3168, 19.4580



118.1670, -9.9423, 15.6395



117.1830, -10.9362, 7.7325

Triad

The Triadic color harmony groups three colors that are evenly spaced from another and form a triangle on the color wheel.



118.1670, -9.9423, 15.6395



113.3350, 1.8068, -19.5878



118.4160, 9.1619, 1.3892

Complementary

The Complementary color scheme is a pair of colors which are on the opposite of each other on the color wheel.



118.1670, -9.9423, 15.6395



115.8330, 9.9423, -15.6395

Split Complementary

Split-complementary colors differ from the complementary color scheme. The scheme consists of three colors, the original color and two neighbors of the complement color.



116.6210, 11.5258, -10.1916



118.1670, -9.9423, 15.6395



113.5070, 7.6380, -23.2466

Square

The Square scheme is like the rectangle color scheme, but the four colors are evenly spaced on the color wheel.



118.1670, -9.9423, 15.6395



114.4840, -4.1826, -11.8255



114.7400, 10.9742, -19.9430



119.6300, 4.6194, 11.7255

Rectangle

The Rectangle color scheme consists of four colors that form a rectangle on the color wheel.



118.1670, -9.9423, 15.6395



116.0790, -9.8989, 1.6847



114.7400, 10.9742, -19.9430



118.3230, 10.1938, -2.9143

Sweetspot

The Sweet Spot groups the original color and five complimentary colors.



118.1670, -9.9423, 15.6395



169.1210, -3.5107, 6.0329



111.9840, 4.4449, 21.0620



85.0390, -2.4842, 3.4738



217.0000, 0.0000, 0.0000



89.0000, 0.0000, 0.0000

Same Dimension

The Same Dimension uses a secret algorithm to generate beautiful new colors.



118.1670, -9.9423, 15.6395



148.0280, -15.7898, 24.5314



129.3200, -15.4408, 5.8584



65.8540, -1.9000, 2.7590



70.2910, -34.6535, 54.9958



2.6690, -1.3158, 2.0443

Inverse Universe

The Inverse Universe completely reimagines the original color for something new.



115.8330, 9.9423, -15.6395



143.9720, 15.7898, -24.5314



104.6800, 15.4408, -5.8584



65.1460, 1.9000, -2.7590



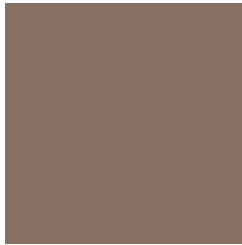
62.1220, 34.9429, -54.4810



2.3310, 1.3158, -2.0443

Previews

White Background



This preview shows how the YUV color 118.1670, -9.9423, 15.6395 looks on a white background.

Color Contrast Check

Large Text (above 18pt) WCAG AA ✓ Pass

Any Text WCAG AA ✓ Pass

Large Text (above 18pt) WCAG AAA ✓ Pass

Any Text WCAG AAA × Fail

Black Background



This preview shows how the YUV color 118.1670, -9.9423, 15.6395 looks on a black background.

Color Contrast Check

Large Text (above 18pt) WCAG AA ✓ Pass

Any Text WCAG AA ✓ Pass

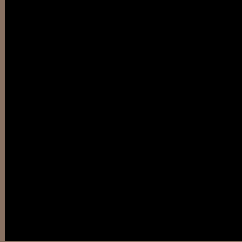
Large Text (above 18pt) WCAG AAA ✓ Pass

Any Text WCAG AAA × Fail

If you want to check with other color combinations, try the [Color Contrast Checker](#).

YUV 118.1670, -9.9423, 15.6395

Background



This preview shows how black text looks on a background with the YUV color 118.1670, -9.9423, 15.6395.



This preview shows how white text looks on a background with the YUV color 118.1670, -9.9423,

15.6395.

Color Blindness Simulation

Color vision deficiency is a very complex topic, and I could not describe the different causes any better than Wikipedia does, so if you want to learn more, you should check out their [article about color blindness](#).

Dichromacy



Original Color

118.1670, -9.9423, 15.6395

Protanopia

117.1550, -8.4574, 6.0031

Deuteranopia

118.1670, -9.9423, 15.6395



Tritanopia

119.3980, -0.1962, 16.3140

Trichromacy



Original Color

118.1670, -9.9423, 15.6395

Protanomaly

117.6500, -9.1945, 9.0769

Deuteranomaly

118.1670, -9.9423, 15.6395

Tritanomaly

118.7740, -3.8326, 15.9842

Monochromacy



Original Color

118.1670, -9.9423, 15.6395

Achromatopsia

118.0000, 0.0000, 0.0000

Achromatomaly

118.1210, -3.5107, 6.0329

CSS Examples

Text

The CSS property to change the color of the text to YUV 118.1670, -9.9423, 15.6395 is called "color". The color property can be set on classes, ids or directly on the HTML element.

This example shows how text in the color `rgb(136, 113, 98)` looks like.

```
.text, #text, p{  
    color:rgb(136, 113, 98)  
}
```

If you want to add a text shadow in that color use the text-shadow property, you can generate a text shadow directly with our [CSS Text Shadow Generator](#).

Here you see how black text with a 4 pixel rgb(136, 113, 98) colored shadow looks like.

```
.shadow{ text-shadow: 4px 4px 2px rgb(136, 113, 98) }
```

Border

The CSS property to change the border of an element to YUV 118.1670, -9.9423, 15.6395 is called "border". The border property can be set on classes, ids or directly on the HTML element.

This example shows the color as border, it can be applied via the CSS property "border" or "border-color".

```
.border, #border, table{ border:4px solid rgb(136, 113, 98) }
```


If only the border color should be changed use the property `border-color`.

```
.border{ border-color:rgb(136, 113, 98) }
```

If you want to add a box shadow in that color use:

Here you see how a box with a 4 pixel `rgb(136, 113, 98)` colored shadow looks like.

```
.boxshadow{ -moz-box-shadow:4px 4px 4px  
4px rgb(136, 113, 98); -webkit-box-  
shadow:4px 4px 4px 4px rgb(136, 113, 98);  
box-shadow:4px 4px 4px 4px rgb(136, 113,  
98) }
```

Background

The CSS property to change the background color of an element to YUV 118.1670, -9.9423, 15.6395 is called "background". The background property can be set on classes, ids or directly on the HTML element.

```
.background, #background, body{  
background: rgb(136, 113, 98) }
```

If only the background color should be changed can be used:

```
.background{ background-color: rgb(136,  
113, 98) }
```

This example shows the color as background, it is applied via the CSS property "background".

To optimize and compress your CSS code, you can use our [online CSS compressor and optimizer](#) based on csstidy. If you want to create a linear or radial gradient as background or border, check our [CSS Gradient Generator](#).

Hey! You found this booklet interesting? Support Converting Colors with the new Membership Option!

The pro membership hides all ads, plus gives you double the colors in the color bucket, and more awesome pro features!

[Learn more, Memberships starting at \\$2.50/m!](#)

**Follow me
on Twitter!**

@ConvertingColor