

Converting Colors

YUV(118.1850, -13.8952,
23.5168)

Have a look what the booklet for
YUV(118.1850, -13.8952, 23.5168)
contains.

YUV(118.1850, -13.8952, 23.5168)	3
<i>Conversions</i>	4
<i>Details</i>	6
<i>Harmonies</i>	12
<i>Previews</i>	24
<i>Color Blindness Simulation</i>	28
<i>CSS Examples</i>	31

Color

**YUV(118.1850, -13.8952,
23.5168)**

Conversions

Conversions Part 1

Format	Color
Hex	916E5A
RGB	145, 110, 90
RGB Percent	57%, 43%, 35%
CMY	0.4314, 0.5686, 0.6471
CMYK	0.00, 0.24, 0.38, 0.43
HSL	22°, 23%, 46%
HSV	22°, 38%, 57%
XYZ	19.0984, 17.9098, 12.1232
YIQ	118.1850, 27.2800, 1.2000

Conversions

Conversions Part 2

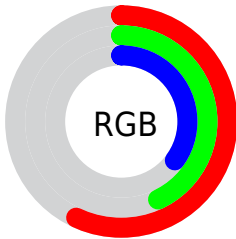
Format	Color
R_{YB}	145, 121, 90
Decimal	9530970
CIE _{Lab}	49.39, 11.02, 16.52
CIE _{LCh}	49, 19.857, 56.294
Yxy	17.9098, 0.3887, 0.3645
Android (android.graphics.Color)	4287721050 (0xFF916E5A)
YUV	118.1850, -13.8952, 23.5168
Hunter-Lab	42.3200, 6.4948, 12.6394

Details

The YUV color **118.1850, -13.8952, 23.5168** is a dark color, and the websafe version is hex **996666**. A complement of this color would be **116.8150, 13.8952, -23.5168**, and the grayscale version is **118.0000, 0.0000, 0.0000**.

A 20% lighter version of the original color is **170.8540, -15.2110, 25.5610**, and **69.2170, -12.4320, 20.8577** is the 20% darker color. If you saturate the color by 10%, you get **111.3060, -17.4059, 29.5496**, and if you desaturate by 10%, it is **125.1780, -9.9478, 17.3839**.

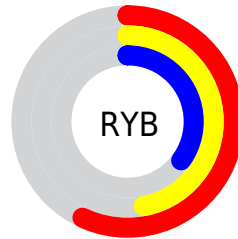
Distribution



Red (57%)

Green (43%)

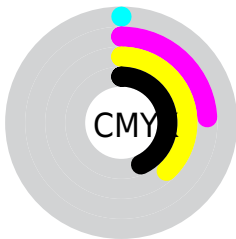
Blue (35%)



Red (57%)

Yellow (47%)

Blue (35%)

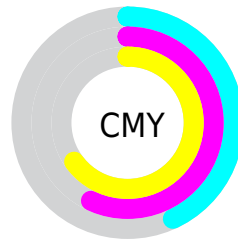


Cyan (0%)

Magenta (24%)

Yellow (38%)

Black (43%)



Cyan (43%)

Magenta (57%)

Yellow (65%)

Brightness & Saturation Gradients

These gradients show how the YUV color 118.1850, -13.8952, 23.5168 changes by changing the brightness by 10 percent. The first figure shows a shift by +10% for each color and the second figure -10%.

Similar to the brightness gradients but the following saturation gradients show a change of the YUV color 118.1850, -13.8952, 23.5168 by changing the saturation by 10% instead.

■ 118.1850,
-13.8952, 23.5168

■ 118.1850,
-13.8952, 23.5168

■ 255.0000, 0.0000,
0.0000

■ 93.5870, -13.6004,
22.2872

■ 170.8540,
-15.2110, 25.5610

■ 69.2170, -12.4320,
20.8577

■ 198.1530,
-15.3584, 26.1758

■ 46.4340, -11.5530,
18.9134

■ 225.1530,
-15.3584, 26.1758

■ 25.4940, -12.5685,
17.9838

■ 245.3680,
-11.5204, 8.4473

■ 5.6810, -2.8007,
11.6808

■ 254.4300, -2.1840,
0.4999

■ 0.0000, 0.0000,
0.0000

■ 118.1850,
-13.8952, 23.5168

■ 118.1850,
-13.8952, 23.5168

■ 111.3060,
-17.4059, 29.5496

■ 125.1780, -9.9478,
17.3839

■ 104.3130,
-21.3533, 35.6825

■ 132.0570, -6.4371,
11.3510

■ 96.8470, -24.5746,
42.2302

■ 139.6370, -2.7790,
4.7034

■ 89.8540, -28.5220,
48.3630

■ 146.5160, 0.7316,
-1.3295

■ 82.9750, -32.0327,
54.3959

■ 153.5090, 4.6791,
-7.4624

■ 75.9820, -35.9801,
60.5288

■ 160.3880, 8.1897,
-13.4953

■ 74.4660, -36.7117,
61.8583

■ 167.9680, 11.8478,
-20.1429

■ 174.8470, 15.3584,

-26.1758

■ 181.8400, 19.3059,
-32.3087

Harmonies

Analogous

The Analogous color harmony consists of three colors that are next to each other on the color wheel.



119.1130, -7.9437, 27.9649



118.1850, -13.8952, 23.5168



117.1360, -16.3360, 13.0357

Triad

The Triadic color harmony groups three colors that are evenly spaced from another and form a triangle on the color wheel.



118.1850, -13.8952, 23.5168



110.6820, 2.1288, -29.5391



118.6590, 13.9721, -1.4549

Complementary

The Complementary color scheme is a pair of colors which are on the opposite of each other on the color wheel.



118.1850, -13.8952, 23.5168



116.8150, 13.8952, -23.5168

Split Complementary

Split-complementary colors differ from the complementary color scheme. The scheme consists of three colors, the original color and two neighbors of the complement color.



115.7600, 17.3733, -19.0835



118.1850, -13.8952, 23.5168



109.6300, 11.0284, -37.3865

Square

The Square scheme is like the rectangle color scheme, but the four colors are evenly spaced on the color wheel.



118.1850, -13.8952, 23.5168



112.9520, -7.3713, -15.7439



111.4440, 16.5431, -32.8384



119.8630, 7.9555, 15.0291

Rectangle

The Rectangle color scheme consists of four colors that form a rectangle on the color wheel.



118.1850, -13.8952, 23.5168



115.4230, -14.9985, 4.0140



111.4440, 16.5431, -32.8384



117.7830, 15.8830, -7.7027

Sweetspot

The Sweet Spot groups the original color and five complimentary colors.



118.1850, -13.8952, 23.5168



178.3880, -5.1213, 9.3067



110.5490, 7.6173, 30.2135



88.5230, -3.2158, 4.8033



222.0000, 0.0000, 0.0000



94.0000, 0.0000, 0.0000

Same Dimension

The Same Dimension uses a secret algorithm to generate beautiful new colors.



118.1850, -13.8952, 23.5168



146.2100, -21.7955, 37.5268



134.0340, -21.7088, 9.6172



67.8540, -1.9000, 2.7590



69.1280, -34.0801, 57.7697



4.1530, -2.0474, 3.3738

Inverse Universe

The Inverse Universe completely reimagines the original color for something new.



116.8150, 13.8952, -23.5168



144.2030, 22.0849, -37.0120



100.9660, 21.7088, -9.6172



67.7330, 1.6106, -3.2738



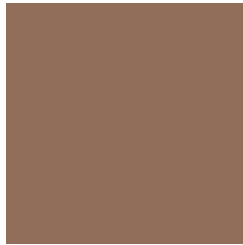
65.8720, 34.0801, -57.7697



3.8470, 2.0474, -3.3738

Previews

White Background



This preview shows how the YUV color 118.1850, -13.8952, 23.5168 looks on a white background.

Color Contrast Check

Large Text (above 18pt) WCAG AA ✓ Pass

Any Text WCAG AA ✓ Pass

Large Text (above 18pt) WCAG AAA ✓ Pass

Any Text WCAG AAA × Fail

Black Background



This preview shows how the YUV color 118.1850, -13.8952, 23.5168 looks on a black background.

Color Contrast Check

Large Text (above 18pt) WCAG AA ✓ Pass

Any Text WCAG AA ✓ Pass

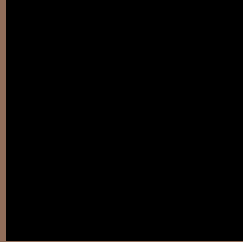
Large Text (above 18pt) WCAG AAA ✓ Pass

Any Text WCAG AAA × Fail

If you want to check with other color combinations, try the [Color Contrast Checker](#).

YUV 118.1850, -13.8952, 23.5168

Background



This preview shows how black text looks on a background with the YUV color 118.1850, -13.8952, 23.5168.



This preview shows how white text looks on a background with the YUV color 118.1850, -13.8952, 23.5168.

Color Blindness Simulation

Color vision deficiency is a very complex topic, and I could not describe the different causes any better than Wikipedia does, so if you want to learn more, you should check out their [article about color blindness](#).

Dichromacy



Original Color

118.1850, -13.8952, 23.5168

Protanopia

116.6560, -11.6624, 7.3177

Deuteranopia

117.7390, -14.1683, 17.7689



Tritanopia

119.8720, -2.4019, 23.7913

Trichromacy



Original Color

118.1850, -13.8952, 23.5168

Protanomaly

116.8740, -12.2629, 13.2655

Deuteranomaly

118.0490, -14.3212, 20.1280

Tritanomaly

119.1340, -6.4751, 23.5615

Monochromacy



Original Color

118.1850, -13.8952, 23.5168

Achromatopsia

118.0000, 0.0000, 0.0000

Achromatomaly

118.0890, -4.9739, 8.6919

CSS Examples

Text

The CSS property to change the color of the text to YUV 118.1850, -13.8952, 23.5168 is called "color". The color property can be set on classes, ids or directly on the HTML element.

This example shows how text in the color `rgb(145, 110, 90)` looks like.

```
.text, #text, p{  
    color:rgb(145, 110, 90)  
}
```

If you want to add a text shadow in that color use the text-shadow property, you can generate a text shadow directly with our [CSS Text Shadow Generator](#).

Here you see how black text with a 4 pixel rgb(145, 110, 90) colored shadow looks like.

```
.shadow{ text-shadow: 4px 4px 2px rgb(145, 110, 90) }
```

Border

The CSS property to change the border of an element to YUV 118.1850, -13.8952, 23.5168 is called "border".

The border property can be set on classes, ids or directly on the HTML element.

This example shows the color as border, it can be applied via the CSS property "border" or "border-color".

```
.border, #border, table{ border:4px solid rgb(145, 110, 90) }
```


If only the border color should be changed use the property `border-color`.

```
.border{ border-color:rgb(145, 110, 90) }
```

If you want to add a box shadow in that color use:

Here you see how a box with a 4 pixel `rgb(145, 110, 90)` colored shadow looks like.

```
.boxshadow{ -moz-box-shadow:4px 4px 4px  
4px rgb(145, 110, 90); -webkit-box-  
shadow:4px 4px 4px 4px rgb(145, 110, 90);  
box-shadow:4px 4px 4px 4px rgb(145, 110,  
90) }
```

Background

The CSS property to change the background color of an element to YUV 118.1850, -13.8952, 23.5168 is called "background". The background property can be set on classes, ids or directly on the HTML element.

```
.background, #background, body{  
background: rgb(145, 110, 90) }
```

If only the background color should be changed can be used:

```
.background{ background-color: rgb(145,  
110, 90) }
```

This example shows the color as background, it is applied via the CSS property "background".

To optimize and compress your CSS code, you can use our [online CSS compressor and optimizer](#) based on csstidy. If you want to create a linear or radial gradient as background or border, check our [CSS Gradient Generator](#).

Hey! You found this booklet interesting? Support Converting Colors with the new Membership Option!

The pro membership hides all ads, plus gives you double the colors in the color bucket, and more awesome pro features!

[Learn more, Memberships starting at \\$2.50/m!](#)

**Follow me
on Twitter!**

@ConvertingColor