

Converting Colors

YUV(118.8220, 0.5808, 93.9951)

Have a look what the booklet for
YUV(118.8220, 0.5808, 93.9951)
contains.

YUV(118.8220, 0.5808, 93.9951)	3
<i>Conversions</i>	4
<i>Details</i>	6
<i>Harmonies</i>	12
<i>Previews</i>	24
<i>Color Blindness Simulation</i>	28
<i>CSS Examples</i>	31

Color

**YUV(118.8220, 0.5808,
93.9951)**

Conversions

Conversions Part 1

Format	Color
Hex	E24078
RGB	226, 64, 120
RGB Percent	89%, 25%, 47%
CMY	0.1137, 0.7490, 0.5294
CMYK	0.00, 0.72, 0.47, 0.11
HSL	339°, 74%, 57%
HSV	339°, 72%, 89%
XYZ	36.5876, 21.1916, 19.9313
YIQ	118.8220, 78.5760, 51.7600

Conversions

Conversions Part 2

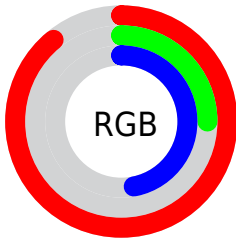
Format	Color
R_{YB}	226, 64, 120
Decimal	14827640
CIE _{Lab}	53.16, 65.62, 5.68
CIE _{LCh}	53, 65.869, 4.947
Yxy	21.1916, 0.4708, 0.2727
Android (android.graphics.Color)	4293017720 (0xFFE24078)
YUV	118.8220, 0.5808, 93.9951
Hunter-Lab	46.0343, 61.3097, 6.5535

Details

The YUV color **118.8220, 0.5808, 93.9951** is a dark color, and the websafe version is hex **CC3366**. The color can be described as middle muted rose. A complement of this color would be **171.1780, -0.5808, -93.9951**, and the grayscale version is **119.0000, 0.0000, 0.0000**.

A 20% lighter version of the original color is **168.0540, 1.9454, 76.2516**, and **57.5430, 7.1273, 94.2398** is the 20% darker color. If you saturate the color by 10%, you get **103.6110, 0.6848, 107.3352**, and if you desaturate by 10%, it is **134.0330, 0.4767, 80.6551**.

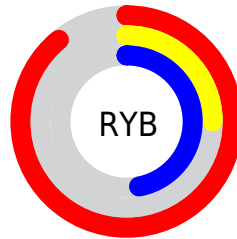
Distribution



Red (89%)

Green (25%)

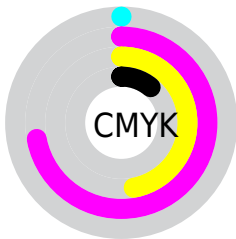
Blue (47%)



Red (89%)

Yellow (25%)

Blue (47%)

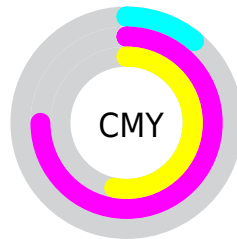


Cyan (0%)

Magenta (72%)

Yellow (47%)

Black (11%)



Cyan (11%)

Magenta (75%)

Yellow (53%)

Brightness & Saturation Gradients

These gradients show how the YUV color 118.8220, 0.5808, 93.9951 changes by changing the brightness by 10 percent. The first figure shows a shift by +10% for each color and the second figure -10%.

Similar to the brightness gradients but the following saturation gradients show a change of the YUV color 118.8220, 0.5808, 93.9951 by changing the saturation by 10% instead.

■ 118.8220, 0.5808,
93.9951

■ 118.8220, 0.5808,
93.9951

■ 255.0000, 0.0000,
0.0000

■ 84.9840, 4.9379,
96.4840

■ 168.0540, 1.9454,
76.2516

■ 57.5430, 7.1273,
94.2398

■ 188.1550, 5.3466,
58.6231

■ 46.0650, 1.9400,
77.9960

■ 208.3700, 9.1846,
40.8945

■ 34.7010, -2.8106,
61.6522

■ 228.5850, 13.0226,
23.1660

■ 23.2510, -10.4767,
47.1379

■ 246.1950, 4.3409,
7.7220

■ 14.2810, -6.0545,
28.6946

■ 0.0000, 0.0000,

0.0000

■ 118.8220, 0.5808,
93.9951

■ 118.8220, 0.5808,
93.9951

■ 103.6110, 0.6848,
107.3352

■ 134.0330, 0.4767,
80.6551

■ 88.9870, 0.4994,
120.1604

■ 148.6570, 0.6621,
67.8298

■ 76.4660, 0.7563,
131.1413

■ 163.7540, 0.1213,
54.5897

■ 178.3780, 0.3066,
41.7645

■ 193.5890, 0.2026,
28.4244

■ 208.8000, 0.0986,
15.0844

■ 223.4240, 0.2840,
2.2592

■ 238.5210, -0.2569,
-10.9809

■ 246.1010, 3.4012,
-17.6286

Harmonies

Analogous

The Analogous color harmony consists of three colors that are next to each other on the color wheel.



126.5360, 24.3858, 65.3049



118.8220, 0.5808, 93.9951



119.5630, -26.8996, 88.0832

Triad

The Triadic color harmony groups three colors that are evenly spaced from another and form a triangle on the color wheel.



118.8220, 0.5808, 93.9951



110.2510, -47.9447, -22.1451



111.3350, 58.5018, -97.6408

Complementary

The Complementary color scheme is a pair of colors which are on the opposite of each other on the color wheel.



118.8220, 0.5808, 93.9951



171.1780, -0.5808, -93.9951

Split Complementary

Split-complementary colors differ from the complementary color scheme. The scheme consists of three colors, the original color and two neighbors of the complement color.



110.9980, 39.4410, -97.3452



118.8220, 0.5808, 93.9951



96.1270, -9.9226, -84.3034

Square

The Square scheme is like the rectangle color scheme, but the four colors are evenly spaced on the color wheel.



118.8220, 0.5808, 93.9951



118.1920, -58.2687, 22.6336



104.6140, 14.9803, -91.7465



104.3710, 67.3581, -91.5334

Rectangle

The Rectangle color scheme consists of four colors that form a rectangle on the color wheel.



118.8220, 0.5808, 93.9951



120.7570, -44.7432, 71.2501



104.6140, 14.9803, -91.7465



111.8420, 52.8289, -98.0854

Sweetspot

The Sweet Spot groups the original color and five complimentary colors.



118.8220, 0.5808, 93.9951



217.9100, 0.0444, 32.5279



113.8630, 55.2835, 48.3551



105.5340, 0.2297, 19.7027



0.0000, 0.0000, 0.0000



128.0000, 0.0000, 0.0000

Same Dimension

The Same Dimension uses a secret algorithm to generate beautiful new colors.



118.8220, 0.5808, 93.9951



110.1450, 0.9145, 127.0378



126.5260, -30.8253, 87.2387



104.7450, 0.1257, 6.3626



59.5780, 0.7010, 102.1021



16.2900, 0.3500, 27.8097

Inverse Universe

The Inverse Universe completely reimagines the original color for something new.



118.8220, 0.5808, 93.9951



110.1450, 0.9145, 127.0378



163.4740, 30.8253, -87.2387



104.7450, 0.1257, 6.3626



59.5780, 0.7010, 102.1021



16.2900, 0.3500, 27.8097

Previews

White Background



This preview shows how the YUV color 118.8220, 0.5808, 93.9951 looks on a white background.

Color Contrast Check

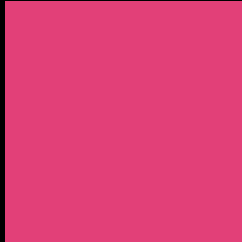
Large Text (above 18pt) WCAG AA ✓ Pass

Any Text WCAG AA ✗ Fail

Large Text (above 18pt) WCAG AAA ✗ Fail

Any Text WCAG AAA ✗ Fail

Black Background



This preview shows how the YUV color 118.8220, 0.5808, 93.9951 looks on a black background.

Color Contrast Check

Large Text (above 18pt) WCAG AA ✓ Pass

Any Text WCAG AA ✓ Pass

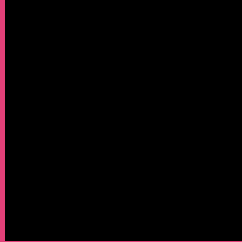
Large Text (above 18pt) WCAG AAA ✓ Pass

Any Text WCAG AAA × Fail

If you want to check with other color combinations, try the [Color Contrast Checker](#).

YUV 118.8220, 0.5808, 93.9951

Background



This preview shows how black text looks on a background with the YUV color 118.8220, 0.5808, 93.9951.



This preview shows how white text looks on a background with the YUV color 118.8220, 0.5808,

Color Blindness Simulation

Color vision deficiency is a very complex topic, and I could not describe the different causes any better than Wikipedia does, so if you want to learn more, you should check out their [article about color blindness](#).

Dichromacy



Original Color

118.8220, 0.5808, 93.9951

Protanopia

127.9250, 13.8410, -6.0732

Deuteranopia

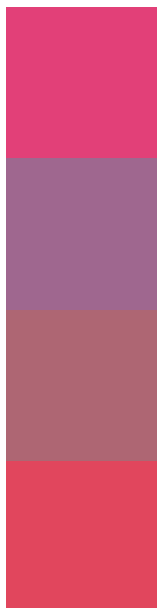
128.3240, -8.0477, 14.6249



Tritanopia

119.3060, -20.3639, 91.8166

Trichromacy



Original Color

118.8220, 0.5808, 93.9951

Protanomaly

124.3040, 9.2171, 30.4284

Deuteranomaly

125.0100, -4.9349, 42.9642

Tritanomaly

118.9670, -12.8017, 92.9909

Monochromacy



Original Color

118.8220, 0.5808, 93.9951

Achromatopsia

119.0000, 0.0000, 0.0000

Achromatomaly

118.9210, 0.0389, 34.2723

CSS Examples

Text

The CSS property to change the color of the text to YUV 118.8220, 0.5808, 93.9951 is called "color". The color property can be set on classes, ids or directly on the HTML element.

This example shows how text in the color `rgb(226, 64, 120)` looks like.

```
.text, #text, p{  
    color:rgb(226, 64, 120)  
}
```

If you want to add a text shadow in that color use the text-shadow property, you can generate a text shadow directly with our [CSS Text Shadow Generator](#).

Here you see how black text with a 4 pixel rgb(226, 64, 120) colored shadow looks like.

```
.shadow{ text-shadow: 4px 4px 2px rgb(226, 64, 120) }
```

Border

The CSS property to change the border of an element to YUV 118.8220, 0.5808, 93.9951 is called "border". The border property can be set on classes, ids or directly on the HTML element.

This example shows the color as border, it can be applied via the CSS property "border" or "border-color".

```
.border, #border, table{ border:4px solid rgb(226, 64, 120) }
```


If only the border color should be changed use the property `border-color`.

```
.border{ border-color:rgb(226, 64, 120) }
```

If you want to add a box shadow in that color use:

Here you see how a box with a 4 pixel `rgb(226, 64, 120)` colored shadow looks like.

```
.boxshadow{ -moz-box-shadow:4px 4px 4px 4px rgb(226, 64, 120); -webkit-box-shadow:4px 4px 4px 4px rgb(226, 64, 120); box-shadow:4px 4px 4px 4px rgb(226, 64, 120) }
```

Background

The CSS property to change the background color of an element to YUV 118.8220, 0.5808, 93.9951 is called "background". The background property can be set on classes, ids or directly on the HTML element.

```
.background, #background, body{  
background: rgb(226, 64, 120) }
```

If only the background color should be changed can be used:

```
.background{ background-color: rgb(226, 64,  
120) }
```

This example shows the color as background, it is applied via the CSS property "background".

To optimize and compress your CSS code, you can use our [online CSS compressor and optimizer](#) based on csstidy. If you want to create a linear or radial gradient as background or border, check our [CSS Gradient Generator](#).

Hey! You found this booklet interesting? Support Converting Colors with the new Membership Option!

The pro membership hides all ads, plus gives you double the colors in the color bucket, and more awesome pro features!

[Learn more, Memberships starting at \\$2.50/m!](#)

**Follow me
on Twitter!**

@ConvertingColor