

Converting Colors

YUV(118.9100, -6.3646,
81.6399)

Have a look what the booklet for
YUV(118.9100, -6.3646, 81.6399)
contains.

YUV(118.9100, -6.3646, 81.6399)	3
<i>Conversions</i>	4
<i>Details</i>	6
<i>Harmonies</i>	12
<i>Previews</i>	24
<i>Color Blindness Simulation</i>	28
<i>CSS Examples</i>	31

Color

**YUV(118.9100, -6.3646,
81.6399)**

Conversions

Conversions Part 1

Format	Color
Hex	D44A6A
RGB	212, 74, 106
RGB Percent	83%, 29%, 42%
CMY	0.1686, 0.7098, 0.5843
CMYK	0.00, 0.65, 0.50, 0.17
HSL	346°, 62%, 56%
HSV	346°, 65%, 83%
XYZ	32.2017, 19.9352, 15.7863
YIQ	118.9100, 71.9760, 39.2080

Conversions

Conversions Part 2

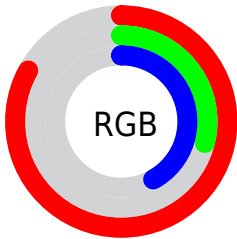
Format	Color
RYB	212, 74, 106
Decimal	13912682
CIELab	51.76, 56.48, 11.77
CIElCh	52, 57.692, 11.768
Yxy	19.9352, 0.4741, 0.2935
Android (android.graphics.Color)	4292102762 (0xFFD44A6A)
YUV	118.9100, -6.3646, 81.6399
Hunter-Lab	44.6489, 50.6023, 10.2913

Details

The YUV color **118.9100, -6.3646, 81.6399** is a dark color, and the websafe version is hex **CC3366**. The color can be described as dark muted rose. A complement of this color would be **167.0900, 6.3646, -81.6399**, and the grayscale version is **119.0000, 0.0000, 0.0000**.

A 20% lighter version of the original color is **170.4530, -6.6323, 74.1477**, and **52.1740, 3.3652, 87.5474** is the 20% darker color. If you saturate the color by 10%, you get **104.7590, -7.2762, 94.0504**, and if you desaturate by 10%, it is **133.0610, -5.4531, 69.2295**.

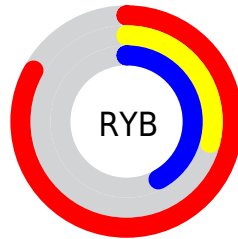
Distribution



Red (83%)

Green (29%)

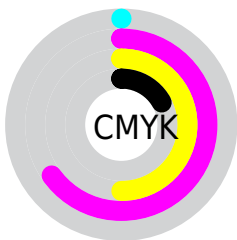
Blue (42%)



Red (83%)

Yellow (29%)

Blue (42%)

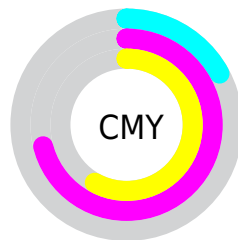


Cyan (0%)

Magenta (65%)

Yellow (50%)

Black (17%)



Cyan (17%)

Magenta (71%)

Yellow (58%)

Brightness & Saturation Gradients

These gradients show how the YUV color 118.9100, -6.3646, 81.6399 changes by changing the brightness by 10 percent. The first figure shows a shift by +10% for each color and the second figure -10%.

Similar to the brightness gradients but the following saturation gradients show a change of the YUV color 118.9100, -6.3646, 81.6399 by changing the saturation by 10% instead.

■ 118.9100, -6.3646,
81.6399

■ 118.9100, -6.3646,
81.6399

255.0000, 0.0000,
0.0000

■ 89.5940, -3.7438,
81.0401

■ 170.4530, -6.6323,
74.1477

■ 52.1740, 3.3652,
87.5474

■ 189.9670, -2.9417,
57.0339

■ 41.1090, -1.5327,
71.8184

■ 209.4810, 0.7489,
39.9202

■ 29.7450, -6.2833,
55.4746

■ 229.8100, 5.0237,
22.0916

■ 19.9620, -8.8553,
40.3753

■ 248.5430, 3.1833,
5.6628

■ 10.5790, -4.7224,
21.4172

■ 0.0000, 0.0000,

0.0000

■ 118.9100, -6.3646,
81.6399

■ 118.9100, -6.3646,
81.6399

■ 104.7590, -7.2762,
94.0504

■ 133.0610, -5.4531,
69.2295

■ 90.4940, -8.6245,
106.5608

■ 147.3260, -4.1047,
56.7191

■ 75.7560, -9.2467,
119.4860

■ 162.0640, -3.4826,
43.7939

■ 68.9740, -9.8472,
125.4338

■ 176.2150, -2.5710,
31.3834

■ 190.3660, -1.6594,
18.9730

■ 204.6310, -0.3111,
6.4626

■ 218.7820, 0.6005,
-5.9478

■ 233.5200, 1.2226,
-18.8730

■ 241.9150, 5.4649,
-26.2355

Harmonies

Analogous

The Analogous color harmony consists of three colors that are next to each other on the color wheel.



123.5330, 15.5132, 64.4306



118.9100, -6.3646, 81.6399



119.4810, -29.3241, 72.3692

Triad

The Triadic color harmony groups three colors that are evenly spaced from another and form a triangle on the color wheel.



118.9100, -6.3646, 81.6399



108.0340, -32.0618, -29.8478



105.1570, 55.1386, -92.2227

Complementary

The Complementary color scheme is a pair of colors which are on the opposite of each other on the color wheel.



118.9100, -6.3646, 81.6399



167.0900, 6.3646, -81.6399

Split Complementary

Split-complementary colors differ from the complementary color scheme. The scheme consists of three colors, the original color and two neighbors of the complement color.



106.5470, 40.1563, -93.4417



118.9100, -6.3646, 81.6399



94.9020, -1.9237, -83.2291

Square

The Square scheme is like the rectangle color scheme, but the four colors are evenly spaced on the color wheel.



118.9100, -6.3646, 81.6399



113.5330, -55.4788, 14.4416



102.4770, 19.4848, -89.8723



112.3450, 53.5669, -54.6766

Rectangle

The Rectangle color scheme consists of four colors that form a rectangle on the color wheel.



118.9100, -6.3646, 81.6399



119.1250, -42.9526, 56.8954



102.4770, 19.4848, -89.8723



106.1200, 51.2128, -93.0672

Sweetspot

The Sweet Spot groups the original color and five complimentary colors.



118.9100, -6.3646, 81.6399



220.6170, -2.2762, 30.1539



121.4260, 44.6530, 51.3694



107.0670, -1.5120, 18.3582



0.0000, 0.0000, 0.0000



128.0000, 0.0000, 0.0000

Same Dimension

The Same Dimension uses a secret algorithm to generate beautiful new colors.



118.9100, -6.3646, 81.6399



120.7450, -9.2413, 117.7416



136.9810, -31.0496, 65.7917



99.6310, -0.3111, 6.4626



55.6890, -7.7347, 101.1277



13.9970, -1.9705, 25.4356

Inverse Universe

The Inverse Universe completely reimagines the original color for something new.



118.9100, -6.3646, 81.6399



120.7450, -9.2413, 117.7416



149.0190, 31.0496, -65.7917



99.6310, -0.3111, 6.4626



55.6890, -7.7347, 101.1277



13.9970, -1.9705, 25.4356

Previews

White Background



This preview shows how the YUV color 118.9100, -6.3646, 81.6399 looks on a white background.

Color Contrast Check

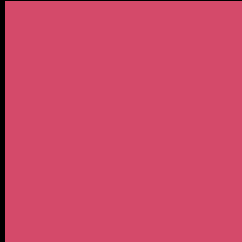
Large Text (above 18pt) WCAG AA ✓ Pass

Any Text WCAG AA ✗ Fail

Large Text (above 18pt) WCAG AAA ✗ Fail

Any Text WCAG AAA ✗ Fail

Black Background



This preview shows how the YUV color 118.9100, -6.3646, 81.6399 looks on a black background.

Color Contrast Check

Large Text (above 18pt) WCAG AA ✓ Pass

Any Text WCAG AA ✓ Pass

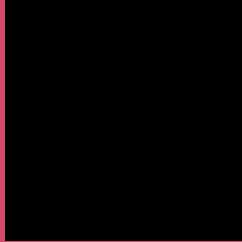
Large Text (above 18pt) WCAG AAA ✓ Pass

Any Text WCAG AAA × Fail

If you want to check with other color combinations, try the [Color Contrast Checker](#).

YUV 118.9100, -6.3646, 81.6399

Background



This preview shows how black text looks on a background with the YUV color 118.9100, -6.3646, 81.6399.



This preview shows how white text looks on a background with the YUV color 118.9100, -6.3646,

Color Blindness Simulation

Color vision deficiency is a very complex topic, and I could not describe the different causes any better than Wikipedia does, so if you want to learn more, you should check out their [article about color blindness](#).

Dichromacy



Original Color

118.9100, -6.3646, 81.6399

Protanopia

124.3250, 3.7838, -0.2850

Deuteranopia

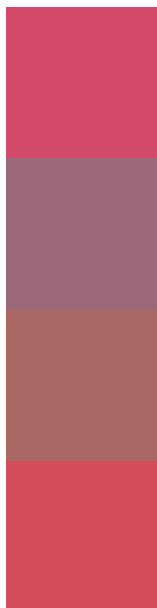
124.1950, -12.4211, 17.3690



Tritanopia

118.3370, -17.4211, 81.2655

Trichromacy



Original Color

118.9100, -6.3646, 81.6399

Protanomaly

122.3010, 0.3446, 29.5540

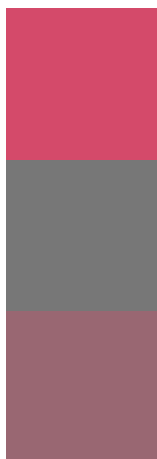
Deuteranomaly

122.6200, -10.1657, 40.6753

Tritanomaly

118.6620, -13.6374, 80.9804

Monochromacy



Original Color

118.9100, -6.3646, 81.6399

Achromatopsia

119.0000, 0.0000, 0.0000

Achromatomaly

119.2040, -2.5656, 29.6391

CSS Examples

Text

The CSS property to change the color of the text to YUV 118.9100, -6.3646, 81.6399 is called "color". The color property can be set on classes, ids or directly on the HTML element.

This example shows how text in the color `rgb(212, 74, 106)` looks like.

```
.text, #text, p{  
    color:rgb(212, 74, 106)  
}
```

If you want to add a text shadow in that color use the text-shadow property, you can generate a text shadow directly with our [CSS Text Shadow Generator](#).

Here you see how black text with a 4 pixel rgb(212, 74, 106) colored shadow looks like.

```
.shadow{ text-shadow: 4px 4px 2px rgb(212, 74, 106) }
```

Border

The CSS property to change the border of an element to YUV 118.9100, -6.3646, 81.6399 is called "border". The border property can be set on classes, ids or directly on the HTML element.

This example shows the color as border, it can be applied via the CSS property "border" or "border-color".

```
.border, #border, table{ border:4px solid rgb(212, 74, 106) }
```


If only the border color should be changed use the property `border-color`.

```
.border{ border-color:rgb(212, 74, 106) }
```

If you want to add a box shadow in that color use:

Here you see how a box with a 4 pixel `rgb(212, 74, 106)` colored shadow looks like.

```
.boxshadow{ -moz-box-shadow:4px 4px 4px  
4px rgb(212, 74, 106); -webkit-box-  
shadow:4px 4px 4px 4px rgb(212, 74, 106);  
box-shadow:4px 4px 4px 4px rgb(212, 74,  
106) }
```

Background

The CSS property to change the background color of an element to YUV 118.9100, -6.3646, 81.6399 is called "background". The background property can be set on classes, ids or directly on the HTML element.

```
.background, #background, body{  
background: rgb(212, 74, 106) }
```

If only the background color should be changed can be used:

```
.background{ background-color: rgb(212, 74,  
106) }
```

This example shows the color as background, it is applied via the CSS property "background".

To optimize and compress your CSS code, you can use our [online CSS compressor and optimizer](#) based on csstidy. If you want to create a linear or radial gradient as background or border, check our [CSS Gradient Generator](#).

Hey! You found this booklet interesting? Support Converting Colors with the new Membership Option!

The pro membership hides all ads, plus gives you double the colors in the color bucket, and more awesome pro features!

[Learn more, Memberships starting at \\$2.50/m!](#)

**Follow me
on Twitter!**

@ConvertingColor