

Converting Colors

YUV(118.9790, -11.3286,
40.3604)

Have a look what the booklet for
YUV(118.9790, -11.3286, 40.3604)
contains.

YUV(118.9790, -11.3286, 40.3604)	3
<i>Conversions</i>	4
<i>Details</i>	6
<i>Harmonies</i>	12
<i>Previews</i>	24
<i>Color Blindness Simulation</i>	28
<i>CSS Examples</i>	31

Color

**YUV(118.9790, -11.3286,
40.3604)**

Conversions

Conversions Part 1

Format	Color
Hex	A56460
RGB	165, 100, 96
RGB Percent	65%, 39%, 38%
CMY	0.3529, 0.6078, 0.6235
CMYK	0.00, 0.39, 0.42, 0.35
HSL	3°, 28%, 51%
HSV	3°, 42%, 65%
XYZ	22.1855, 17.9582, 13.3633
YIQ	118.9790, 40.0240, 12.5360

Conversions

Conversions Part 2

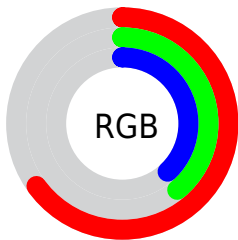
Format	Color
RYB	165, 100, 96
Decimal	10839136
CIELab	49.45, 25.76, 13.45
CIElCh	49, 29.061, 27.559
Yxy	17.9582, 0.4146, 0.3356
Android (android.graphics.Color)	4289029216 (0xFFA56460)
YUV	118.9790, -11.3286, 40.3604
Hunter-Lab	42.3771, 19.2895, 10.9673

Details

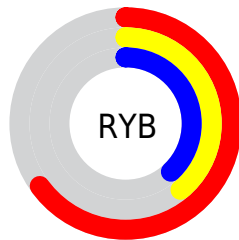
The YUV color **118.9790, -11.3286, 40.3604** is a dark color, and the websafe version is hex **996666**. A complement of this color would be **142.0210, 11.3286, -40.3604**, and the grayscale version is **119.0000, 0.0000, 0.0000**.

A 20% lighter version of the original color is **172.2460, -12.9393, 43.6343**, and **69.1140, -9.4232, 35.8570** is the 20% darker color. If you saturate the color by 10%, you get **107.6490, -14.1240, 50.2968**, and if you desaturate by 10%, it is **130.3090, -8.5333, 30.4240**.

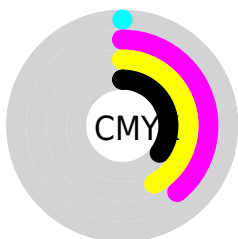
Distribution



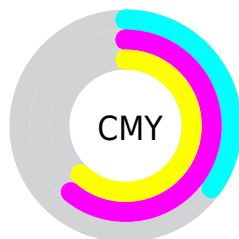
- Red (65%)
- Green (39%)
- Blue (38%)



- Red (65%)
- Yellow (39%)
- Blue (38%)



- Cyan (0%)
- Magenta (39%)
- Yellow (42%)
- Black (35%)



- Cyan (35%)
- Magenta (61%)
- Yellow (62%)

Brightness & Saturation Gradients

These gradients show how the YUV color 118.9790, -11.3286, 40.3604 changes by changing the brightness by 10 percent. The first figure shows a shift by +10% for each color and the second figure -10%.

Similar to the brightness gradients but the following saturation gradients show a change of the YUV color 118.9790, -11.3286, 40.3604 by changing the saturation by 10% instead.

■ 118.9790,
-11.3286, 40.3604

■ 118.9790,
-11.3286, 40.3604

■ 255.0000, 0.0000,
0.0000

■ 93.1960, -10.4496,
38.4161

■ 172.2460,
-12.9393, 43.6343

■ 69.1140, -9.4232,
35.8570

■ 199.8440,
-13.2341, 44.8638

■ 45.4450, -8.1074,
33.8127

■ 219.9670, -9.8437,
30.7239

■ 20.9180, -8.8336,
33.3979

■ 240.1820, -6.0057,
12.9954

■ 11.1770, -5.0173,
22.6468

■ 0.0000, 0.0000,
0.0000

■ 118.9790,
-11.3286, 40.3604

■ 118.9790,
-11.3286, 40.3604

■ 107.6490,
-14.1240, 50.2968

■ 130.3090, -8.5333,
30.4240

■ 97.0200, -16.7719,
59.6185

■ 140.9380, -5.8854,
21.1024

■ 85.8040, -19.1304,
69.4549

■ 152.2680, -3.0901,
11.1660

■ 75.0610, -22.2151,
78.8765

■ 162.8970, -0.4422,
1.8443

■ 63.8450, -24.5736,
88.7129

■ 174.1130, 1.9163,
-7.9921

■ 55.2050, -27.2161,
96.2902

■ 184.8560, 5.0010,
-17.4137

■ 196.0720, 7.3595,
-27.2501

■ 206.8150, 10.4442,

-36.6718

■ 218.0310, 12.8027,
-46.5082

Harmonies

Analogous

The Analogous color harmony consists of three colors that are next to each other on the color wheel.



120.0570, 0.4649, 37.6610



118.9790, -11.3286, 40.3604



117.9320, -20.1795, 32.5086

Triad

The Triadic color harmony groups three colors that are evenly spaced from another and form a triangle on the color wheel.



118.9790, -11.3286, 40.3604



109.6150, -9.6702, -25.0954



113.2730, 25.9944, -30.9344

Complementary

The Complementary color scheme is a pair of colors which are on the opposite of each other on the color wheel.



118.9790, -11.3286, 40.3604



142.0210, 11.3286, -40.3604

Split Complementary

Split-complementary colors differ from the complementary color scheme. The scheme consists of three colors, the original color and two neighbors of the complement color.



102.1290, 27.5444, -61.5031



118.9790, -11.3286, 40.3604



104.0600, 5.3934, -50.0416

Square

The Square scheme is like the rectangle color scheme, but the four colors are evenly spaced on the color wheel.



118.9790, -11.3286, 40.3604



113.4130, -19.9236, -2.9932



94.6620, 22.3516, -76.0026



119.0810, 20.6661, -1.8250

Rectangle

The Rectangle color scheme consists of four colors that form a rectangle on the color wheel.



118.9790, -11.3286, 40.3604



116.9540, -23.6413, 22.8423



94.6620, 22.3516, -76.0026



109.8480, 27.1899, -41.0857

Sweetspot

The Sweet Spot groups the original color and five complimentary colors.



118.9790, -11.3286, 40.3604



195.5460, -4.7062, 16.1842



124.1550, 18.6576, 35.8211



95.6700, -2.7953, 9.9364



235.0000, 0.0000, 0.0000



107.0000, 0.0000, 0.0000

Same Dimension

The Same Dimension uses a secret algorithm to generate beautiful new colors.



118.9790, -11.3286, 40.3604



142.5150, -17.5089, 62.6923



138.9370, -21.1679, 22.8573



76.2780, -1.6161, 5.0182



48.0510, -23.6891, 85.0243



5.9690, -2.9427, 10.5512

Inverse Universe

The Inverse Universe completely reimagines the original color for something new.



142.0210, 11.3286, -40.3604



178.4850, 17.5089, -62.6923



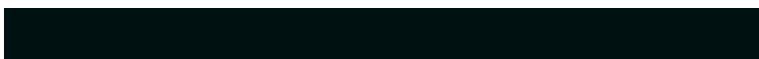
122.0630, 21.1679, -22.8573



78.7220, 1.6161, -5.0182



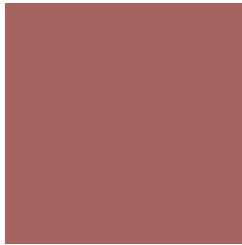
96.9490, 23.6891, -85.0243



12.0310, 2.9427, -10.5512

Previews

White Background



This preview shows how the YUV color 118.9790, -11.3286, 40.3604 looks on a white background.

Color Contrast Check

Large Text (above 18pt) WCAG AA ✓ Pass

Any Text WCAG AA ✓ Pass

Large Text (above 18pt) WCAG AAA ✓ Pass

Any Text WCAG AAA × Fail

Black Background



This preview shows how the YUV color 118.9790, -11.3286, 40.3604 looks on a black background.

Color Contrast Check

Large Text (above 18pt) WCAG AA ✓ Pass

Any Text WCAG AA ✓ Pass

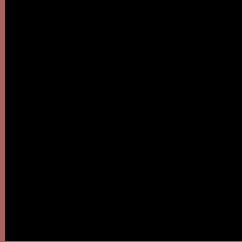
Large Text (above 18pt) WCAG AAA ✓ Pass

Any Text WCAG AAA × Fail

If you want to check with other color combinations, try the [Color Contrast Checker](#).

YUV 118.9790, -11.3286, 40.3604

Background



This preview shows how black text looks on a background with the YUV color 118.9790, -11.3286, 40.3604.

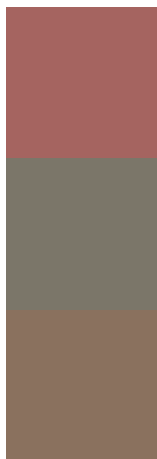


This preview shows how white text looks on a background with the YUV color 118.9790, -11.3286, 40.3604.

Color Blindness Simulation

Color vision deficiency is a very complex topic, and I could not describe the different causes any better than Wikipedia does, so if you want to learn more, you should check out their [article about color blindness](#).

Dichromacy



Original Color

118.9790, -11.3286, 40.3604

Protanopia

118.0130, -6.4154, 4.3736

Deuteranopia

118.3090, -11.9843, 17.2690



Tritanopia

119.8310, -6.8187, 40.4902

Trichromacy



Original Color

118.9790, -11.3286, 40.3604

Protanomaly

118.0470, -7.9112, 17.4988

Deuteranomaly

118.4780, -11.5747, 25.8908

Tritanomaly

119.3750, -8.5659, 40.8901

Monochromacy



Original Color

118.9790, -11.3286, 40.3604

Achromatopsia

119.0000, 0.0000, 0.0000

Achromatomaly

119.0620, -3.9746, 14.8546

CSS Examples

Text

The CSS property to change the color of the text to YUV 118.9790, -11.3286, 40.3604 is called "color". The color property can be set on classes, ids or directly on the HTML element.

This example shows how text in the color `rgb(165, 100, 96)` looks like.

```
.text, #text, p{  
    color:rgb(165, 100, 96)  
}
```

If you want to add a text shadow in that color use the text-shadow property, you can generate a text shadow directly with our [CSS Text Shadow Generator](#).

Here you see how black text with a 4 pixel rgb(165, 100, 96) colored shadow looks like.

```
.shadow{ text-shadow: 4px 4px 2px rgb(165, 100, 96) }
```

Border

The CSS property to change the border of an element to YUV 118.9790, -11.3286, 40.3604 is called "border".

The border property can be set on classes, ids or directly on the HTML element.

This example shows the color as border, it can be applied via the CSS property "border" or "border-color".

```
.border, #border, table{ border:4px solid rgb(165, 100, 96) }
```


If only the border color should be changed use the property `border-color`.

```
.border{ border-color:rgb(165, 100, 96) }
```

If you want to add a box shadow in that color use:

Here you see how a box with a 4 pixel `rgb(165, 100, 96)` colored shadow looks like.

```
.boxshadow{ -moz-box-shadow:4px 4px 4px  
4px rgb(165, 100, 96); -webkit-box-  
shadow:4px 4px 4px 4px rgb(165, 100, 96);  
box-shadow:4px 4px 4px 4px rgb(165, 100,  
96) }
```

Background

The CSS property to change the background color of an element to YUV 118.9790, -11.3286, 40.3604 is called "background". The background property can be set on classes, ids or directly on the HTML element.

```
.background, #background, body{  
background: rgb(165, 100, 96) }
```

If only the background color should be changed can be used:

```
.background{ background-color: rgb(165,  
100, 96) }
```

This example shows the color as background, it is applied via the CSS property "background".

To optimize and compress your CSS code, you can use our [online CSS compressor and optimizer](#) based on csstidy. If you want to create a linear or radial gradient as background or border, check our [CSS Gradient Generator](#).

Hey! You found this booklet interesting? Support Converting Colors with the new Membership Option!

The pro membership hides all ads, plus gives you double the colors in the color bucket, and more awesome pro features!

[Learn more, Memberships starting at \\$2.50/m!](#)

**Follow me
on Twitter!**

@ConvertingColor