

Converting Colors

YUV(119.2090, -13.4140,
55.9447)

Have a look what the booklet for
YUV(119.2090, -13.4140, 55.9447)
contains.

YUV(119.2090, -13.4140, 55.9447)	3
<i>Conversions</i>	4
<i>Details</i>	6
<i>Harmonies</i>	12
<i>Previews</i>	24
<i>Color Blindness Simulation</i>	28
<i>CSS Examples</i>	31

Color

**YUV(119.2090, -13.4140,
55.9447)**

Conversions

Conversions Part 1

Format	Color
Hex	B75C5C
RGB	183, 92, 92
RGB Percent	72%, 36%, 36%
CMY	0.2824, 0.6392, 0.6392
CMYK	0.00, 0.50, 0.50, 0.28
HSL	0°, 39%, 54%
HSV	0°, 50%, 72%
XYZ	25.2874, 18.4943, 12.3622
YIQ	119.2090, 54.2360, 19.2920

Conversions

Conversions Part 2

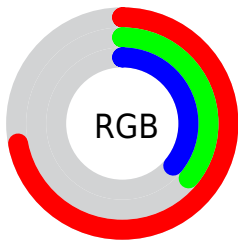
Format	Color
R _Y B	183, 92, 92
Decimal	12016732
CIE Lab	50.09, 36.71, 17.10
CIE LCh	50, 40.499, 24.982
Yxy	18.4943, 0.4504, 0.3294
Android (android.graphics.Color)	4290206812 (0xFFB75C5C)
YUV	119.2090, -13.4140, 55.9447
Hunter-Lab	43.0050, 29.7011, 13.0600

Details

The YUV color **119.2090, -13.4140, 55.9447** is a dark color, and the websafe version is hex **CC6666**. A complement of this color would be **155.7910, 13.4140, -55.9447**, and the grayscale version is **119.0000, 0.0000, 0.0000**.

A 20% lighter version of the original color is **173.0740, -15.3195, 60.4481**, and **67.5720, -10.6350, 51.2414** is the 20% darker color. If you saturate the color by 10%, you get **106.5910, -16.0674, 67.0107**, and if you desaturate by 10%, it is **131.8270, -10.7607, 44.8787**.

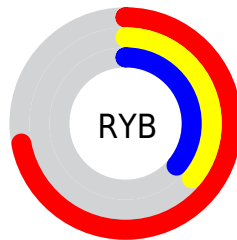
Distribution



Red (72%)

Green (36%)

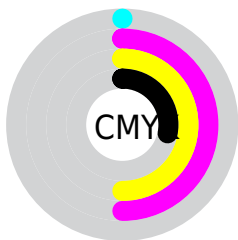
Blue (36%)



Red (72%)

Yellow (36%)

Blue (36%)

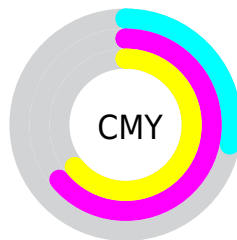


Cyan (0%)

Magenta (50%)

Yellow (50%)

Black (28%)



Cyan (28%)

Magenta (64%)

Yellow (64%)

Brightness & Saturation Gradients

These gradients show how the YUV color 119.2090, -13.4140, 55.9447 changes by changing the brightness by 10 percent. The first figure shows a shift by +10% for each color and the second figure -10%.

Similar to the brightness gradients but the following saturation gradients show a change of the YUV color 119.2090, -13.4140, 55.9447 by changing the saturation by 10% instead.

■ 119.2090,
-13.4140, 55.9447

■ 119.2090,
-13.4140, 55.9447

255.0000, 0.0000,
0.0000

■ 93.1270, -12.3876,
53.3856

■ 173.0740,
-15.3195, 60.4481

■ 67.5720, -10.6350,
51.2414

■ 195.8880,
-13.2558, 51.8412

■ 41.0710, -7.4300,
49.9267

■ 215.4020, -9.5652,
34.7274

■ 21.5280, -10.6133,
44.2639

■ 235.6170, -5.7272,
16.9989

■ 14.5800, -6.2019,
29.3093

254.6580, -1.3104,
0.2999

■ 0.0000, 0.0000,
0.0000

■ 119.2090,
-13.4140, 55.9447

■ 119.2090,
-13.4140, 55.9447

■ 106.5910,
-16.0674, 67.0107

■ 131.8270,
-10.7607, 44.8787

■ 93.2720, -18.8681,
78.6915

■ 145.1460, -7.9600,
33.1980

■ 80.6540, -21.5214,
89.7574

■ 157.7640, -5.3067,
22.1320

■ 68.0360, -24.1747,
100.8234

■ 170.3820, -2.6533,
11.0660

■ 55.4180, -26.8281,
111.8894

■ 183.7010, 0.1474,
-0.6148

■ 54.7170, -26.9755,
112.5042

■ 196.3190, 2.8007,
-11.6808

■ 208.9370, 5.4541,
-22.7467

■ 221.5550, 8.1074,

-33.8127

 233.4720, 10.6133,
-44.2639

Harmonies

Analogous

The Analogous color harmony consists of three colors that are next to each other on the color wheel.



120.7150, 2.6055, 51.1159



119.2090, -13.4140, 55.9447



118.5870, -26.9114, 45.0892

Triad

The Triadic color harmony groups three colors that are evenly spaced from another and form a triangle on the color wheel.



119.2090, -13.4140, 55.9447



107.2950, -14.4424, -34.4617



104.6740, 41.0797, -62.8581

Complementary

The Complementary color scheme is a pair of colors which are on the opposite of each other on the color wheel.



119.2090, -13.4140, 55.9447



155.7910, 13.4140, -55.9447

Split Complementary

Split-complementary colors differ from the complementary color scheme. The scheme consists of three colors, the original color and two neighbors of the complement color.



98.0210, 37.9506, -85.9644



119.2090, -13.4140, 55.9447



92.6000, 9.5642, -81.2102

Square

The Square scheme is like the rectangle color scheme, but the four colors are evenly spaced on the color wheel.



119.2090, -13.4140, 55.9447



113.3070, -29.2384, -2.0232



96.5900, 24.8521, -84.7094



119.9800, 30.5759, -6.9985

Rectangle

The Rectangle color scheme consists of four colors that form a rectangle on the color wheel.



119.2090, -13.4140, 55.9447



117.0170, -32.5464, 32.4341



96.5900, 24.8521, -84.7094



96.2260, 43.7656, -84.3902

Sweetspot

The Sweet Spot groups the original color and five complimentary colors.



119.2090, -13.4140, 55.9447



212.4650, -5.1592, 21.5172



129.5830, 26.3346, 46.8467



104.5780, -3.2430, 13.5251



247.0000, 0.0000, 0.0000



120.0000, 0.0000, 0.0000

Same Dimension

The Same Dimension uses a secret algorithm to generate beautiful new colors.



119.2090, -13.4140, 55.9447



137.4580, -20.9318, 87.2983



146.2110, -26.7260, 32.2640



85.6910, -1.3267, 5.5330



46.6440, -22.9955, 95.9052



8.3720, -4.1274, 17.2138

Inverse Universe

The Inverse Universe completely reimagines the original color for something new.



155.7910, 13.4140, -55.9447



194.5420, 20.9318, -87.2983



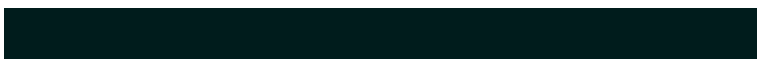
129.3760, 26.4366, -32.7788



89.3090, 1.3267, -5.5330



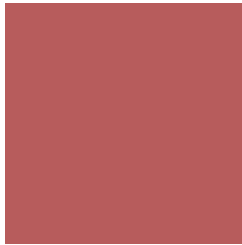
109.3560, 22.9955, -95.9052



19.6280, 4.1274, -17.2138

Previews

White Background



This preview shows how the YUV color 119.2090, -13.4140, 55.9447 looks on a white background.

Color Contrast Check

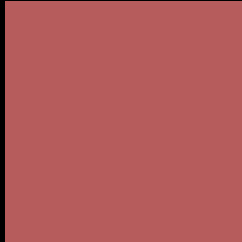
Large Text (above 18pt) WCAG AA ✓ Pass

Any Text WCAG AA × Fail

Large Text (above 18pt) WCAG AAA × Fail

Any Text WCAG AAA × Fail

Black Background



This preview shows how the YUV color 119.2090, -13.4140, 55.9447 looks on a black background.

Color Contrast Check

Large Text (above 18pt) WCAG AA ✓ Pass

Any Text WCAG AA ✓ Pass

Large Text (above 18pt) WCAG AAA ✓ Pass

Any Text WCAG AAA × Fail

If you want to check with other color combinations, try the [Color Contrast Checker](#).

YUV 119.2090, -13.4140, 55.9447

Background



This preview shows how black text looks on a background with the YUV color 119.2090, -13.4140, 55.9447.

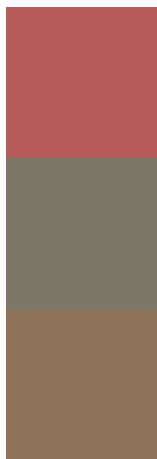


This preview shows how white text looks on a background with the YUV color 119.2090, -13.4140,

Color Blindness Simulation

Color vision deficiency is a very complex topic, and I could not describe the different causes any better than Wikipedia does, so if you want to learn more, you should check out their [article about color blindness](#).

Dichromacy



Original Color

119.2090, -13.4140, 55.9447

Protanopia

119.1980, -6.9996, 5.0884

Deuteranopia

119.9950, -15.7735, 19.2984



Tritanopia

119.3060, -10.5039, 55.8596

Trichromacy



Original Color

119.2090, -13.4140, 55.9447

Protanomaly

119.0370, -9.3852, 23.6466

Deuteranomaly

119.8980, -15.2327, 32.5385

Tritanomaly

119.0780, -11.3775, 56.0596

Monochromacy



Original Color

119.2090, -13.4140, 55.9447

Achromatopsia

119.0000, 0.0000, 0.0000

Achromatomaly

118.8670, -4.8644, 20.2876

CSS Examples

Text

The CSS property to change the color of the text to YUV 119.2090, -13.4140, 55.9447 is called "color". The color property can be set on classes, ids or directly on the HTML element.

This example shows how text in the color `rgb(183, 92, 92)` looks like.

```
.text, #text, p{  
    color:rgb(183, 92, 92)  
}
```

If you want to add a text shadow in that color use the text-shadow property, you can generate a text shadow directly with our [CSS Text Shadow Generator](#).

Here you see how black text with a 4 pixel rgb(183, 92, 92) colored shadow looks like.

```
.shadow{ text-shadow: 4px 4px 2px rgb(183, 92, 92) }
```

Border

The CSS property to change the border of an element to YUV 119.2090, -13.4140, 55.9447 is called "border".

The border property can be set on classes, ids or directly on the HTML element.

This example shows the color as border, it can be applied via the CSS property "border" or "border-color".

```
.border, #border, table{ border:4px solid rgb(183, 92, 92) }
```


If only the border color should be changed use the property border-color.

```
.border{ border-color:rgb(183, 92, 92) }
```

If you want to add a box shadow in that color use:

Here you see how a box with a 4 pixel rgb(183, 92, 92) colored shadow looks like.

```
.boxshadow{ -moz-box-shadow:4px 4px 4px  
4px rgb(183, 92, 92); -webkit-box-  
shadow:4px 4px 4px 4px rgb(183, 92, 92);  
box-shadow:4px 4px 4px 4px rgb(183, 92,  
92) }
```

Background

The CSS property to change the background color of an element to YUV 119.2090, -13.4140, 55.9447 is called "background". The background property can be set on classes, ids or directly on the HTML element.

```
.background, #background, body{  
background: rgb(183, 92, 92) }
```

If only the background color should be changed can be used:

```
.background{ background-color: rgb(183, 92,  
92) }
```

This example shows the color as background, it is applied via the CSS property "background".

To optimize and compress your CSS code, you can use our [online CSS compressor and optimizer](#) based on csstidy. If you want to create a linear or radial gradient as background or border, check our [CSS Gradient Generator](#).

Hey! You found this booklet interesting? Support Converting Colors with the new Membership Option!

The pro membership hides all ads, plus gives you double the colors in the color bucket, and more awesome pro features!

[Learn more, Memberships starting at \\$2.50/m!](#)

**Follow me
on Twitter!**

@ConvertingColor