

Converting Colors

YUV(119.8850, -25.5793,
37.8119)

Have a look what the booklet for
YUV(119.8850, -25.5793, 37.8119)
contains.

YUV(119.8850, -25.5793, 37.8119)	3
<i>Conversions</i>	4
<i>Details</i>	6
<i>Harmonies</i>	12
<i>Previews</i>	24
<i>Color Blindness Simulation</i>	28
<i>CSS Examples</i>	31

Color

**YUV(119.8850, -25.5793,
37.8119)**

Conversions

Conversions Part 1

Format	Color
Hex	A36C44
RGB	163, 108, 68
RGB Percent	64%, 42%, 27%
CMY	0.3608, 0.5765, 0.7333
CMYK	0.00, 0.34, 0.58, 0.36
HSL	25°, 41%, 45%
HSV	25°, 58%, 64%
XYZ	21.5102, 18.9290, 7.9888
YIQ	119.8850, 45.6200, -0.7800

Conversions

Conversions Part 2

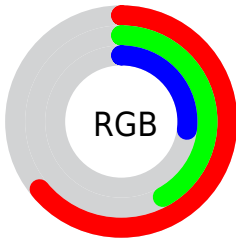
Format	Color
R _Y B	163, 137, 68
Decimal	10710084
CIE Lab	50.60, 17.61, 31.11
CIE LCh	51, 35.747, 60.480
Yxy	18.9290, 0.4442, 0.3909
Android (android.graphics.Color)	4288900164 (0xFFA36C44)
YUV	119.8850, -25.5793, 37.8119
Hunter-Lab	43.5075, 12.1128, 19.5685

Details

The YUV color **119.8850, -25.5793, 37.8119** is a dark color, and the websafe version is hex **996633**. A complement of this color would be **111.1150, 25.5793, -37.8119**, and the grayscale version is **120.0000, 0.0000, 0.0000**.

A 20% lighter version of the original color is **173.3370, -27.7741, 41.8005**, and **70.1340, -23.2371, 33.2085** is the 20% darker color. If you saturate the color by 10%, you get **112.7780, -29.9636, 44.0447**, and if you desaturate by 10%, it is **126.9920, -21.1951, 31.5790**.

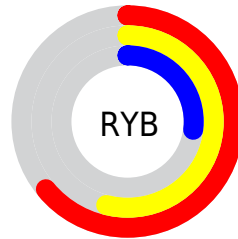
Distribution



Red (64%)

Green (42%)

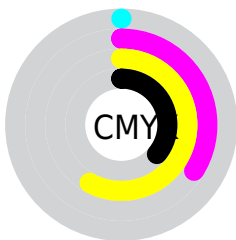
Blue (27%)



Red (64%)

Yellow (54%)

Blue (27%)

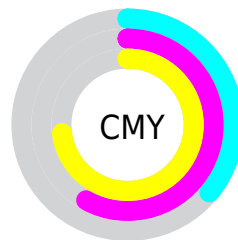


Cyan (0%)

Magenta (34%)

Yellow (58%)

Black (36%)



Cyan (36%)

Magenta (58%)

Yellow (73%)

Brightness & Saturation Gradients

These gradients show how the YUV color 119.8850, -25.5793, 37.8119 changes by changing the brightness by 10 percent. The first figure shows a shift by +10% for each color and the second figure -10%.

Similar to the brightness gradients but the following saturation gradients show a change of the YUV color 119.8850, -25.5793, 37.8119 by changing the saturation by 10% instead.

■ 119.8850,
-25.5793, 37.8119

■ 119.8850,
-25.5793, 37.8119

255.0000, 0.0000,
0.0000

■ 94.8030, -24.5529,
35.2528

■ 173.3370,
-27.7741, 41.8005

■ 70.1340, -23.2371,
33.2085

■ 200.8210,
-28.5058, 43.1300

■ 46.5250, -22.9368,
30.2346

■ 221.2430,
-25.2628, 29.6049

■ 26.4240, -13.0270,
25.0612

■ 241.3440,
-21.8616, 11.9763

■ 9.8670, -4.8644,
20.2876

■ 251.5800,
-13.1039, 2.9993

■ 0.0000, 0.0000,
0.0000

254.8860, -0.4368,

0.1000

■ 119.8850,
-25.5793, 37.8119

■ 119.8850,
-25.5793, 37.8119

■ 112.7780,
-29.9636, 44.0447

■ 126.9920,
-21.1951, 31.5790

■ 104.9700,
-34.4952, 50.8923

■ 134.8000,
-16.6634, 24.7314

■ 97.8630, -38.8795,
57.1251

■ 141.9070,
-12.2792, 18.4986

■ 90.1690, -42.9743,
63.8728

■ 149.6010, -8.1843,
11.7509

■ 89.2400, -43.9953,
64.6875

■ 156.8220, -3.3632,
5.4181

■ 164.5160, 0.7316,
-1.3295

■ 171.6230, 5.1159,
-7.5624

■ 178.7300, 9.5001,
-13.7952

■ 186.5380, 14.0318,
-20.6428

Harmonies

Analogous

The Analogous color harmony consists of three colors that are next to each other on the color wheel.



121.4100, -14.9921, 48.7524



119.8850, -25.5793, 37.8119



118.0260, -29.5928, 18.3942

Triad

The Triadic color harmony groups three colors that are evenly spaced from another and form a triangle on the color wheel.



119.8850, -25.5793, 37.8119



93.5120, 13.0586, -82.0100



122.5420, 24.8758, 1.2787

Complementary

The Complementary color scheme is a pair of colors which are on the opposite of each other on the color wheel.



119.8850, -25.5793, 37.8119



111.1150, 25.5793, -37.8119

Split Complementary

Split-complementary colors differ from the complementary color scheme. The scheme consists of three colors, the original color and two neighbors of the complement color.



114.0640, 32.9994, -37.7671



119.8850, -25.5793, 37.8119



96.9320, 26.1625, -85.0094

Square

The Square scheme is like the rectangle color scheme, but the four colors are evenly spaced on the color wheel.



119.8850, -25.5793, 37.8119



109.4350, -10.0745, -35.4615



96.6190, 37.6558, -84.7349



124.0420, 13.2903, 30.6582

Rectangle

The Rectangle color scheme consists of four colors that form a rectangle on the color wheel.



119.8850, -25.5793, 37.8119



115.7250, -26.4864, 1.9952



96.6190, 37.6558, -84.7349



120.5620, 27.8239, -11.0169

Sweetspot

The Sweet Spot groups the original color and five complimentary colors.



119.8850, -25.5793, 37.8119



195.5690, -9.6475, 14.4100



102.6750, 10.0202, 52.9050



97.5620, -5.7001, 8.2771



235.0000, 0.0000, 0.0000



107.0000, 0.0000, 0.0000

Same Dimension

The Same Dimension uses a secret algorithm to generate beautiful new colors.



119.8850, -25.5793, 37.8119



144.5320, -40.1953, 59.1694



147.4740, -39.1807, 13.6163



78.0390, -2.4842, 3.4738



79.1620, -39.0269, 57.7399



10.0780, -4.9685, 6.9476

Inverse Universe

The Inverse Universe completely reimagines the original color for something new.



111.1150, 25.5793, -37.8119



130.4680, 40.1953, -59.1694



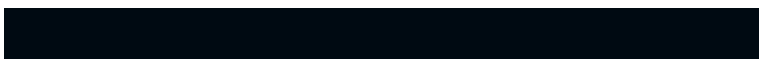
83.5260, 39.1807, -13.6163



76.9610, 2.4842, -3.4738



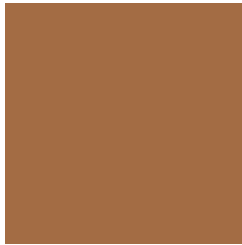
65.8380, 39.0269, -57.7399



7.9220, 4.9685, -6.9476

Previews

White Background



This preview shows how the YUV color 119.8850, -25.5793, 37.8119 looks on a white background.

Color Contrast Check

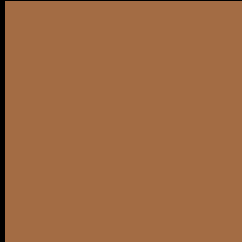
Large Text (above 18pt) WCAG AA ✓ Pass

Any Text WCAG AA × Fail

Large Text (above 18pt) WCAG AAA × Fail

Any Text WCAG AAA × Fail

Black Background



This preview shows how the YUV color 119.8850, -25.5793, 37.8119 looks on a black background.

Color Contrast Check

Large Text (above 18pt) WCAG AA ✓ Pass

Any Text WCAG AA ✓ Pass

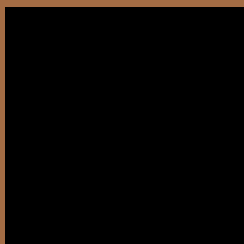
Large Text (above 18pt) WCAG AAA ✓ Pass

Any Text WCAG AAA × Fail

If you want to check with other color combinations, try the [Color Contrast Checker](#).

YUV 119.8850, -25.5793, 37.8119

Background



This preview shows how black text looks on a background with the YUV color 119.8850, -25.5793, 37.8119.



This preview shows how white text looks on a background with the YUV color 119.8850, -25.5793,

Color Blindness Simulation

Color vision deficiency is a very complex topic, and I could not describe the different causes any better than Wikipedia does, so if you want to learn more, you should check out their [article about color blindness](#).

Dichromacy



Original Color

119.8850, -25.5793, 37.8119

Protanopia

118.8170, -22.5878, 11.5615

Deuteranopia

119.2810, -26.2675, 25.1866



Tritanopia

122.6350, -6.2291, 38.0311

Trichromacy



Original Color

119.8850, -25.5793, 37.8119

Protanomaly

118.9430, -23.6359, 21.0980

Deuteranomaly

119.1290, -25.6996, 29.7049

Tritanomaly

121.8000, -13.2124, 37.8864

Monochromacy



Original Color

119.8850, -25.5793, 37.8119

Achromatopsia

120.0000, 0.0000, 0.0000

Achromatomaly

120.2700, -9.5001, 13.7952

CSS Examples

Text

The CSS property to change the color of the text to YUV 119.8850, -25.5793, 37.8119 is called "color". The color property can be set on classes, ids or directly on the HTML element.

This example shows how text in the color `rgb(163, 108, 68)` looks like.

```
.text, #text, p{  
    color:rgb(163, 108, 68)  
}
```

If you want to add a text shadow in that color use the text-shadow property, you can generate a text shadow directly with our [CSS Text Shadow Generator](#).

Here you see how black text with a 4 pixel rgb(163, 108, 68) colored shadow looks like.

```
.shadow{ text-shadow: 4px 4px 2px rgb(163, 108, 68) }
```

Border

The CSS property to change the border of an element to YUV 119.8850, -25.5793, 37.8119 is called "border".

The border property can be set on classes, ids or directly on the HTML element.

This example shows the color as border, it can be applied via the CSS property "border" or "border-color".

```
.border, #border, table{ border:4px solid rgb(163, 108, 68) }
```


If only the border color should be changed use the property `border-color`.

```
.border{ border-color:rgb(163, 108, 68) }
```

If you want to add a box shadow in that color use:

Here you see how a box with a 4 pixel `rgb(163, 108, 68)` colored shadow looks like.

```
.boxshadow{ -moz-box-shadow:4px 4px 4px  
4px rgb(163, 108, 68); -webkit-box-  
shadow:4px 4px 4px 4px rgb(163, 108, 68);  
box-shadow:4px 4px 4px 4px rgb(163, 108,  
68) }
```

Background

The CSS property to change the background color of an element to YUV 119.8850, -25.5793, 37.8119 is called "background". The background property can be set on classes, ids or directly on the HTML element.

```
.background, #background, body{  
background: rgb(163, 108, 68) }
```

If only the background color should be changed can be used:

```
.background{ background-color: rgb(163,  
108, 68) }
```

This example shows the color as background, it is applied via the CSS property "background".

To optimize and compress your CSS code, you can use our [online CSS compressor and optimizer](#) based on csstidy. If you want to create a linear or radial gradient as background or border, check our [CSS Gradient Generator](#).

Hey! You found this booklet interesting? Support Converting Colors with the new Membership Option!

The pro membership hides all ads, plus gives you double the colors in the color bucket, and more awesome pro features!

[Learn more, Memberships starting at \\$2.50/m!](#)

**Follow me
on Twitter!**

@ConvertingColor