

Converting Colors

YUV(121.1410, -27.1845,
39.3413)

Have a look what the booklet for
YUV(121.1410, -27.1845, 39.3413)
contains.

YUV(121.1410, -27.1845, 39.3413)	3
<i>Conversions</i>	4
<i>Details</i>	6
<i>Harmonies</i>	12
<i>Previews</i>	24
<i>Color Blindness Simulation</i>	28
<i>CSS Examples</i>	31

Color

**YUV(121.1410, -27.1845,
39.3413)**

Conversions

Conversions Part 1

Format	Color
Hex	A66D42
RGB	166, 109, 66
RGB Percent	65%, 43%, 26%
CMY	0.3490, 0.5725, 0.7412
CMYK	0.00, 0.34, 0.60, 0.35
HSL	26°, 43%, 45%
HSV	26°, 60%, 65%
XYZ	22.1779, 19.4376, 7.7372
YIQ	121.1410, 47.7750, -1.2890

Conversions

Conversions Part 2

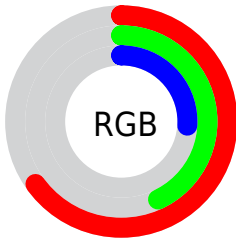
Format	Color
R_{YB}	166, 141, 66
Decimal	10906946
CIE _{Lab}	51.20, 18.19, 33.01
CIE _{LCh}	51, 37.692, 61.153
Yxy	19.4376, 0.4494, 0.3939
Android (android.graphics.Color)	4289097026 (0xFFA66D42)
YUV	121.1410, -27.1845, 39.3413
Hunter-Lab	44.0881, 12.6377, 20.4567

Details

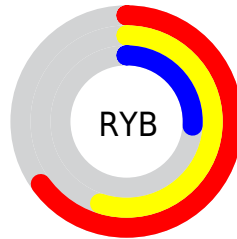
The YUV color **121.1410, -27.1845, 39.3413** is a dark color, and the websafe version is hex **996633**. A complement of this color would be **110.8590, 27.1845, -39.3413**, and the grayscale version is **121.0000, 0.0000, 0.0000**.

A 20% lighter version of the original color is **174.5930, -29.3793, 43.3299**, and **70.9770, -25.1317, 34.2232** is the 20% darker color. If you saturate the color by 10%, you get **113.9200, -32.0056, 45.6742**, and if you desaturate by 10%, it is **128.3620, -22.3635, 33.0085**.

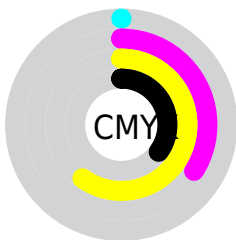
Distribution



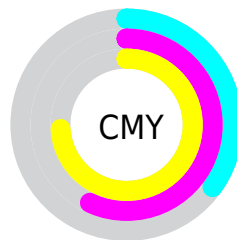
- Red (65%)
- Green (43%)
- Blue (26%)



- Red (65%)
- Yellow (55%)
- Blue (26%)



- Cyan (0%)
- Magenta (34%)
- Yellow (60%)
- Black (35%)



- Cyan (35%)
- Magenta (57%)
- Yellow (74%)

Brightness & Saturation Gradients

These gradients show how the YUV color 121.1410, -27.1845, 39.3413 changes by changing the brightness by 10 percent. The first figure shows a shift by +10% for each color and the second figure -10%.

Similar to the brightness gradients but the following saturation gradients show a change of the YUV color 121.1410, -27.1845, 39.3413 by changing the saturation by 10% instead.

■ 121.1410,
-27.1845, 39.3413

■ 121.1410,
-27.1845, 39.3413

255.0000, 0.0000,
0.0000

■ 96.0590, -26.1581,
36.7823

■ 174.5930,
-29.3793, 43.3299

■ 70.9770, -25.1317,
34.2232

■ 202.3760,
-30.2584, 45.2742

■ 48.0090, -23.6684,
31.5641

■ 222.1890,
-26.7152, 28.7752

■ 27.6090, -13.6112,
25.7759

■ 241.7030,
-23.0246, 11.6615

■ 10.4650, -5.1592,
21.5172

■ 251.3520,
-13.9775, 3.1993

■ 0.0000, 0.0000,
0.0000

254.6580, -1.3104,

0.2999

■ 121.1410,
-27.1845, 39.3413

■ 121.1410,
-27.1845, 39.3413

■ 113.9200,
-32.0056, 45.6742

■ 128.3620,
-22.3635, 33.0085

■ 106.2260,
-36.1004, 52.4218

■ 136.0560,
-18.2686, 26.2609

■ 99.0050, -40.9215,
58.7546

■ 143.2770,
-13.4476, 19.9281

■ 91.3110, -45.0163,
65.5023

■ 150.9710, -9.3527,
13.1804

■ 158.1920, -4.5317,
6.8476

■ 166.0000, 0.0000,
0.0000

■ 173.1070, 4.3842,
-6.2328

■ 180.9150, 8.9159,
-13.0805

■ 188.0220, 13.3002,
-19.3133

Harmonies

Analogous

The Analogous color harmony consists of three colors that are next to each other on the color wheel.



122.4920, -16.0186, 51.3115



121.1410, -27.1845, 39.3413



119.2710, -31.1926, 18.1793

Triad

The Triadic color harmony groups three colors that are evenly spaced from another and form a triangle on the color wheel.



121.1410, -27.1845, 39.3413



94.9140, 13.3534, -83.2396



124.1830, 26.0388, 1.5935

Complementary

The Complementary color scheme is a pair of colors which are on the opposite of each other on the color wheel.



121.1410, -27.1845, 39.3413



110.8590, 27.1845, -39.3413

Split Complementary

Split-complementary colors differ from the complementary color scheme. The scheme consists of three colors, the original color and two neighbors of the complement color.



115.2100, 34.8995, -40.5262



121.1410, -27.1845, 39.3413



98.5620, 27.3309, -86.4389

Square

The Square scheme is like the rectangle color scheme, but the four colors are evenly spaced on the color wheel.



121.1410, -27.1845, 39.3413



109.8260, -9.7742, -38.4354



98.3630, 39.2610, -86.2644



125.5800, 14.0111, 32.8173

Rectangle

The Rectangle color scheme consists of four colors that form a rectangle on the color wheel.



121.1410, -27.1845, 39.3413



116.9700, -28.0862, 1.7803



98.3630, 39.2610, -86.2644



122.3170, 29.4237, -10.8020

Sweetspot

The Sweet Spot groups the original color and five complimentary colors.



121.1410, -27.1845, 39.3413



199.6400, -10.6685, 15.2247



102.5120, 10.5936, 55.6790



99.0460, -6.4317, 9.6067



237.0000, 0.0000, 0.0000



110.0000, 0.0000, 0.0000

Same Dimension

The Same Dimension uses a secret algorithm to generate beautiful new colors.



121.1410, -27.1845, 39.3413



146.9730, -42.3847, 61.4137



149.9040, -41.3647, 14.1162



80.1530, -2.0474, 3.3738



81.8200, -40.3373, 58.0399



11.2630, -5.5527, 7.6623

Inverse Universe

The Inverse Universe completely reimagines the original color for something new.



110.8590, 27.1845, -39.3413



131.0270, 42.3847, -61.4137



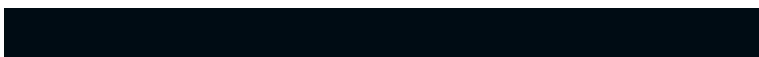
82.0960, 41.3647, -14.1162



79.8470, 2.0474, -3.3738



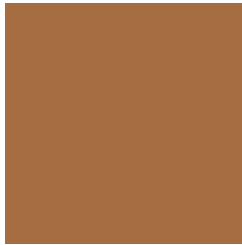
66.1800, 40.3373, -58.0399



9.3240, 5.2633, -8.1771

Previews

White Background



This preview shows how the YUV color 121.1410, -27.1845, 39.3413 looks on a white background.

Color Contrast Check

Large Text (above 18pt) WCAG AA ✓ Pass

Any Text WCAG AA × Fail

Large Text (above 18pt) WCAG AAA × Fail

Any Text WCAG AAA × Fail

Black Background



This preview shows how the YUV color 121.1410, -27.1845, 39.3413 looks on a black background.

Color Contrast Check

Large Text (above 18pt) WCAG AA ✓ Pass

Any Text WCAG AA ✓ Pass

Large Text (above 18pt) WCAG AAA ✓ Pass

Any Text WCAG AAA × Fail

If you want to check with other color combinations, try the [Color Contrast Checker](#).

YUV 121.1410, -27.1845, 39.3413

Background



This preview shows how black text looks on a background with the YUV color 121.1410, -27.1845, 39.3413.



This preview shows how white text looks on a background with the YUV color 121.1410, -27.1845,

Color Blindness Simulation

Color vision deficiency is a very complex topic, and I could not describe the different causes any better than Wikipedia does, so if you want to learn more, you should check out their [article about color blindness](#).

Dichromacy



Original Color

121.1410, -27.1845, 39.3413

Protanopia

119.7740, -24.0456, 12.4762

Deuteranopia

120.8250, -28.0147, 25.5865



Tritanopia

124.2330, -6.5239, 39.2607

Trichromacy



Original Color

121.1410, -27.1845, 39.3413

Protanomaly

120.1990, -25.2411, 22.6275

Deuteranomaly

120.9720, -27.5942, 30.7196

Tritanomaly

123.2840, -13.9440, 39.2159

Monochromacy



Original Color

121.1410, -27.1845, 39.3413

Achromatopsia

121.0000, 0.0000, 0.0000

Achromatomaly

121.1560, -9.9369, 13.8952

CSS Examples

Text

The CSS property to change the color of the text to YUV 121.1410, -27.1845, 39.3413 is called "color". The color property can be set on classes, ids or directly on the HTML element.

This example shows how text in the color `rgb(166, 109, 66)` looks like.

```
.text, #text, p{  
    color:rgb(166, 109, 66)  
}
```

If you want to add a text shadow in that color use the text-shadow property, you can generate a text shadow directly with our [CSS Text Shadow Generator](#).

Here you see how black text with a 4 pixel rgb(166, 109, 66) colored shadow looks like.

```
.shadow{ text-shadow: 4px 4px 2px rgb(166, 109, 66) }
```

Border

The CSS property to change the border of an element to YUV 121.1410, -27.1845, 39.3413 is called "border".

The border property can be set on classes, ids or directly on the HTML element.

This example shows the color as border, it can be applied via the CSS property "border" or "border-color".

```
.border, #border, table{ border:4px solid rgb(166, 109, 66) }
```


If only the border color should be changed use the property `border-color`.

```
.border{ border-color:rgb(166, 109, 66) }
```

If you want to add a box shadow in that color use:

Here you see how a box with a 4 pixel `rgb(166, 109, 66)` colored shadow looks like.

```
.boxshadow{ -moz-box-shadow:4px 4px 4px  
4px rgb(166, 109, 66); -webkit-box-  
shadow:4px 4px 4px 4px rgb(166, 109, 66);  
box-shadow:4px 4px 4px 4px rgb(166, 109,  
66) }
```

Background

The CSS property to change the background color of an element to YUV 121.1410, -27.1845, 39.3413 is called "background". The background property can be set on classes, ids or directly on the HTML element.

```
.background, #background, body{  
background: rgb(166, 109, 66) }
```

If only the background color should be changed can be used:

```
.background{ background-color: rgb(166,  
109, 66) }
```

This example shows the color as background, it is applied via the CSS property "background".

To optimize and compress your CSS code, you can use our [online CSS compressor and optimizer](#) based on csstidy. If you want to create a linear or radial gradient as background or border, check our [CSS Gradient Generator](#).

Hey! You found this booklet interesting? Support Converting Colors with the new Membership Option!

The pro membership hides all ads, plus gives you double the colors in the color bucket, and more awesome pro features!

[Learn more, Memberships starting at \\$2.50/m!](#)

**Follow me
on Twitter!**

@ConvertingColor