

Converting Colors

YUV(121.9590, -14.2768,
52.6560)

Have a look what the booklet for
YUV(121.9590, -14.2768, 52.6560)
contains.

YUV(121.9590, -14.2768, 52.6560)	3
<i>Conversions</i>	4
<i>Details</i>	6
<i>Harmonies</i>	12
<i>Previews</i>	24
<i>Color Blindness Simulation</i>	28
<i>CSS Examples</i>	31

Color

**YUV(121.9590, -14.2768,
52.6560)**

Conversions

Conversions Part 1

Format	Color
Hex	B6615D
RGB	182, 97, 93
RGB Percent	71%, 38%, 36%
CMY	0.2863, 0.6196, 0.6353
CMYK	0.00, 0.47, 0.49, 0.29
HSL	3°, 38%, 54%
HSV	3°, 49%, 71%
XYZ	25.5419, 19.2848, 12.7321
YIQ	121.9590, 51.9440, 16.7760

Conversions

Conversions Part 2

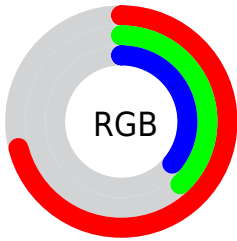
Format	Color
RYB	182, 97, 93
Decimal	11952477
CIELab	51.02, 33.78, 17.75
CIELCh	51, 38.162, 27.716
Yxy	19.2848, 0.4438, 0.3350
Android (android.graphics.Color)	4290142557 (0xFFB6615D)
YUV	121.9590, -14.2768, 52.6560
Hunter-Lab	43.9144, 26.9704, 13.5502

Details

The YUV color **121.9590, -14.2768, 52.6560** is a dark color, and the websafe version is hex **CC6666**. A complement of this color would be **153.0410, 14.2768, -52.6560**, and the grayscale version is **122.0000, 0.0000, 0.0000**.

A 20% lighter version of the original color is **175.8240, -16.1822, 57.1594**, and **70.3220, -11.4977, 47.9526** is the 20% darker color. If you saturate the color by 10%, you get **109.9280, -17.2195, 63.2071**, and if you desaturate by 10%, it is **133.9900, -11.3341, 42.1048**.

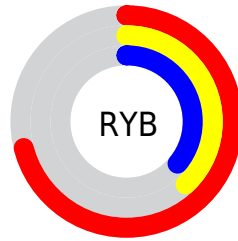
Distribution



Red (71%)

Green (38%)

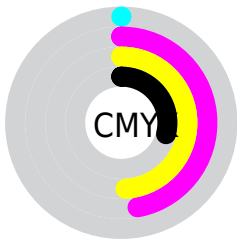
Blue (36%)



Red (71%)

Yellow (38%)

Blue (36%)

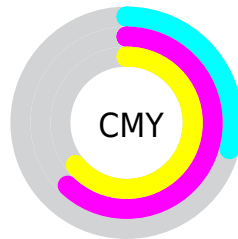


Cyan (0%)

Magenta (47%)

Yellow (49%)

Black (29%)



Cyan (29%)

Magenta (62%)

Yellow (64%)

Brightness & Saturation Gradients

These gradients show how the YUV color 121.9590, -14.2768, 52.6560 changes by changing the brightness by 10 percent. The first figure shows a shift by +10% for each color and the second figure -10%.

Similar to the brightness gradients but the following saturation gradients show a change of the YUV color 121.9590, -14.2768, 52.6560 by changing the saturation by 10% instead.

■ 121.9590,
-14.2768, 52.6560

■ 121.9590,
-14.2768, 52.6560

■ 255.0000, 0.0000,
0.0000

■ 95.8770, -13.2504,
50.0969

■ 175.8240,
-16.1822, 57.1594

■ 70.3220, -11.4977,
47.9526

■ 198.9370,
-14.2659, 49.1673

■ 45.1800, -9.4557,
46.3231

■ 218.4510,
-10.5753, 32.0535

■ 21.2290, -10.4659,
43.6492

■ 238.6660, -6.7373,
14.3249

■ 14.1670, -6.4913,
28.7945

■ 254.8860, -0.4368,
0.1000

■ 0.0000, 0.0000,
0.0000

121.9590,
-14.2768, 52.6560

121.9590,
-14.2768, 52.6560

109.9280,
-17.2195, 63.2071

133.9900,
-11.3341, 42.1048

97.3100, -19.8728,
74.2731

146.6080, -8.6807,
31.0388

85.1650, -23.2523,
84.9243

158.7530, -5.3012,
20.3876

72.5470, -25.9057,
95.9903

171.3710, -2.6479,
9.3216

60.5160, -28.8484,
106.5415

183.4020, 0.2948,
-1.2296


59.1140, -29.1432,
107.7710

195.4330, 3.2375,
-11.7807

208.0510, 5.8909,
-22.8467

220.1960, 9.2704,

-33.4979

 231.9990, 11.3395,
-43.8491

Harmonies

Analogous

The Analogous color harmony consists of three colors that are next to each other on the color wheel.



123.8350, 0.5743, 49.2567



121.9590, -14.2768, 52.6560



120.6790, -26.4637, 41.5005

Triad

The Triadic color harmony groups three colors that are evenly spaced from another and form a triangle on the color wheel.



121.9590, -14.2768, 52.6560



109.8650, -12.2584, -34.9616



112.5080, 36.2316, -47.8035

Complementary

The Complementary color scheme is a pair of colors which are on the opposite of each other on the color wheel.



121.9590, -14.2768, 52.6560



153.0410, 14.2768, -52.6560

Split Complementary

Split-complementary colors differ from the complementary color scheme. The scheme consists of three colors, the original color and two neighbors of the complement color.



98.7220, 38.0981, -86.5792



121.9590, -14.2768, 52.6560



94.4580, 11.6062, -82.8397

Square

The Square scheme is like the rectangle color scheme, but the four colors are evenly spaced on the color wheel.



121.9590, -14.2768, 52.6560



115.9800, -26.6121, -4.3675



98.2200, 26.0205, -86.1389



123.2040, 27.5074, -2.8099

Rectangle

The Rectangle color scheme consists of four colors that form a rectangle on the color wheel.



121.9590, -14.2768, 52.6560



119.7500, -30.9357, 29.1603



98.2200, 26.0205, -86.1389



102.4940, 40.6755, -73.2242

Sweetspot

The Sweet Spot groups the original color and five complimentary colors.



121.9590, -14.2768, 52.6560



213.0520, -5.4486, 21.0024



129.4150, 24.4454, 46.1170



105.1650, -3.5323, 13.0103



247.0000, 0.0000, 0.0000



120.0000, 0.0000, 0.0000

Same Dimension

The Same Dimension uses a secret algorithm to generate beautiful new colors.



121.9590, -14.2768, 52.6560



142.9690, -22.6627, 82.4652



147.2000, -26.7206, 30.5196



85.6910, -1.3267, 5.5330



50.7530, -25.0212, 92.3016



8.9590, -4.4168, 16.6990

Inverse Universe

The Inverse Universe completely reimagines the original color for something new.



153.0410, 14.2768, -52.6560



191.6180, 22.3733, -82.9800



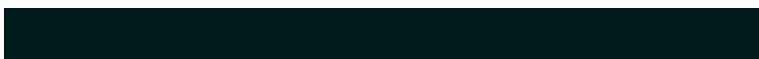
127.8000, 26.7206, -30.5196



88.7220, 1.6161, -5.0182



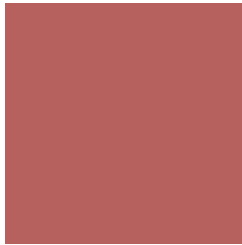
105.2470, 25.0212, -92.3016



19.0410, 4.4168, -16.6990

Previews

White Background



This preview shows how the YUV color 121.9590, -14.2768, 52.6560 looks on a white background.

Color Contrast Check

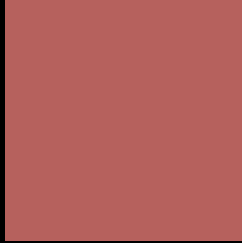
Large Text (above 18pt) WCAG AA ✓ Pass

Any Text WCAG AA × Fail

Large Text (above 18pt) WCAG AAA × Fail

Any Text WCAG AAA × Fail

Black Background



This preview shows how the YUV color 121.9590, -14.2768, 52.6560 looks on a black background.

Color Contrast Check

Large Text (above 18pt) WCAG AA ✓ Pass

Any Text WCAG AA ✓ Pass

Large Text (above 18pt) WCAG AAA ✓ Pass

Any Text WCAG AAA × Fail

If you want to check with other color combinations, try the [Color Contrast Checker](#).

YUV 121.9590, -14.2768, 52.6560 Background



This preview shows how black text looks on a background with the YUV color 121.9590, -14.2768, 52.6560.



This preview shows how white text looks on a background with the YUV color 121.9590, -14.2768,

Color Blindness Simulation

Color vision deficiency is a very complex topic, and I could not describe the different causes any better than Wikipedia does, so if you want to learn more, you should check out their [article about color blindness](#).

Dichromacy



Original Color

121.9590, -14.2768, 52.6560

Protanopia

121.8560, -8.3100, 5.3883

Deuteranopia

121.8810, -16.2103, 19.3984



Tritanopia

122.6970, -10.2036, 52.8857

Trichromacy



Original Color

121.9590, -14.2768, 52.6560

Protanomaly

122.0970, -10.4008, 22.7169

Deuteranomaly

122.0720, -15.8115, 31.5089

Tritanomaly

122.3550, -11.5140, 53.1857

Monochromacy



Original Color

121.9590, -14.2768, 52.6560

Achromatopsia

122.0000, 0.0000, 0.0000

Achromatomaly

122.0410, -5.4432, 19.2580

CSS Examples

Text

The CSS property to change the color of the text to YUV 121.9590, -14.2768, 52.6560 is called "color". The color property can be set on classes, ids or directly on the HTML element.

This example shows how text in the color `rgb(182, 97, 93)` looks like.

```
.text, #text, p{  
    color:rgb(182, 97, 93)  
}
```

If you want to add a text shadow in that color use the text-shadow property, you can generate a text shadow directly with our [CSS Text Shadow Generator](#).

Here you see how black text with a 4 pixel rgb(182, 97, 93) colored shadow looks like.

```
.shadow{ text-shadow: 4px 4px 2px rgb(182, 97, 93) }
```

Border

The CSS property to change the border of an element to YUV 121.9590, -14.2768, 52.6560 is called "border".

The border property can be set on classes, ids or directly on the HTML element.

This example shows the color as border, it can be applied via the CSS property "border" or "border-color".

```
.border, #border, table{ border:4px solid rgb(182, 97, 93) }
```


If only the border color should be changed use the property border-color.

```
.border{ border-color:rgb(182, 97, 93) }
```

If you want to add a box shadow in that color use:

Here you see how a box with a 4 pixel rgb(182, 97, 93) colored shadow looks like.

```
.boxshadow{ -moz-box-shadow:4px 4px 4px  
4px rgb(182, 97, 93); -webkit-box-  
shadow:4px 4px 4px 4px rgb(182, 97, 93);  
box-shadow:4px 4px 4px 4px rgb(182, 97,  
93) }
```

Background

The CSS property to change the background color of an element to YUV 121.9590, -14.2768, 52.6560 is called "background". The background property can be set on classes, ids or directly on the HTML element.

```
.background, #background, body{  
background: rgb(182, 97, 93) }
```

If only the background color should be changed can be used:

```
.background{ background-color: rgb(182, 97,  
93) }
```

This example shows the color as background, it is applied via the CSS property "background".

To optimize and compress your CSS code, you can use our [online CSS compressor and optimizer](#) based on csstidy. If you want to create a linear or radial gradient as background or border, check our [CSS Gradient Generator](#).

Hey! You found this booklet interesting? Support Converting Colors with the new Membership Option!

The pro membership hides all ads, plus gives you double the colors in the color bucket, and more awesome pro features!

[Learn more, Memberships starting at \\$2.50/m!](#)

**Follow me
on Twitter!**

@ConvertingColor