

Converting Colors

YUV(122.1530, 1.8966, 91.9508)

Have a look what the booklet for
YUV(122.1530, 1.8966, 91.9508)
contains.

YUV(122.1530, 1.8966, 91.9508)	3
<i>Conversions</i>	4
<i>Details</i>	6
<i>Harmonies</i>	12
<i>Previews</i>	24
<i>Color Blindness Simulation</i>	28
<i>CSS Examples</i>	31

Color

**YUV(122.1530, 1.8966,
91.9508)**

Conversions

Conversions Part 1

Format	Color
Hex	E3447E
RGB	227, 68, 126
RGB Percent	89%, 27%, 49%
CMY	0.1098, 0.7333, 0.5059
CMYK	0.00, 0.70, 0.44, 0.11
HSL	338°, 74%, 58%
HSV	338°, 70%, 89%
XYZ	37.5116, 21.9715, 22.0025
YIQ	122.1530, 76.1460, 51.7460

Conversions

Conversions Part 2

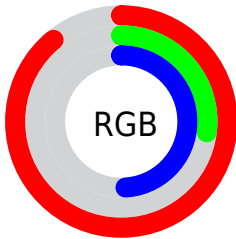
Format	Color
R_{YB}	227, 68, 126
Decimal	14894206
CIE _{Lab}	54.00, 65.05, 3.32
CIE _{LCh}	54, 65.132, 2.922
Yxy	21.9715, 0.4603, 0.2696
Android (android.graphics.Color)	4293084286 (0xFFE3447E)
YUV	122.1530, 1.8966, 91.9508
Hunter-Lab	46.8738, 60.8187, 4.9810

Details

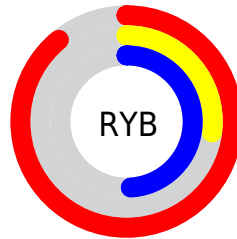
The YUV color **122.1530, 1.8966, 91.9508** is a dark color, and the websafe version is hex **CC3366**. The color can be described as middle muted rose. A complement of this color would be **172.8470, -1.8966, -91.9508**, and the grayscale version is **122.0000, 0.0000, 0.0000**.

A 20% lighter version of the original color is **171.0860, 3.4086, 73.5926**, and **58.4120, 9.1639, 94.3547** is the 20% darker color. If you saturate the color by 10%, you get **107.0560, 2.4374, 105.1909**, and if you desaturate by 10%, it is **137.2500, 1.3558, 78.7108**.

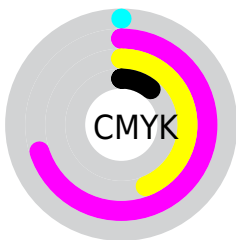
Distribution



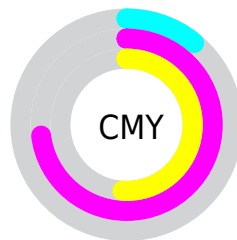
- Red (89%)
- Green (27%)
- Blue (49%)



- Red (89%)
- Yellow (27%)
- Blue (49%)



- Cyan (0%)
- Magenta (70%)
- Yellow (44%)
- Black (11%)



- Cyan (11%)
- Magenta (73%)
- Yellow (51%)

Brightness & Saturation Gradients

These gradients show how the YUV color 122.1530, 1.8966, 91.9508 changes by changing the brightness by 10 percent. The first figure shows a shift by +10% for each color and the second figure -10%.

Similar to the brightness gradients but the following saturation gradients show a change of the YUV color 122.1530, 1.8966, 91.9508 by changing the saturation by 10% instead.

122.1530, 1.8966,
91.9508

122.1530, 1.8966,
91.9508

255.0000, 0.0000,
0.0000

89.4890, 5.6749,
93.4101

171.0860, 3.4086,
73.5926

58.4120, 9.1639,
94.3547

190.7140, 7.5360,
56.3788

46.9340, 3.9765,
78.1109

210.9290, 11.3740,
38.6503

35.8690, -0.9214,
62.3819

230.9330, 11.8650,
21.1068

24.8750, -6.8404,
47.4676

247.9560, 3.4727,
6.1776

14.8790, -6.3493,
29.9241

0.0000, 0.0000,

0.0000

■ 122.1530, 1.8966,
91.9508

■ 122.1530, 1.8966,
91.9508

■ 107.0560, 2.4374,
105.1909

■ 137.2500, 1.3558,
78.7108

■ 92.4320, 2.2520,
118.0161

■ 151.8740, 1.5411,
65.8855

■ 77.3350, 2.7928,
131.2562

■ 166.9710, 1.0003,
52.6454

■ 182.1820, 0.8963,
39.3054

■ 196.6920, 0.6448,
26.5801

■ 211.9030, 0.5408,
13.2401

■ 227.0000, 0.0000,
0.0000

■ 242.0970, -0.5408,
-13.2401

■ 246.6280, 4.1274,
-17.2138

Harmonies

Analogous

The Analogous color harmony consists of three colors that are next to each other on the color wheel.



129.7420, 25.2702, 61.6163



122.1530, 1.8966, 91.9508



122.3180, -25.2998, 88.2981

Triad

The Triadic color harmony groups three colors that are evenly spaced from another and form a triangle on the color wheel.



122.1530, 1.8966, 91.9508



113.0450, -48.8292, -18.4565



112.9820, 57.1969, -99.0852

Complementary

The Complementary color scheme is a pair of colors which are on the opposite of each other on the color wheel.



122.1530, 1.8966, 91.9508



172.8470, -1.8966, -91.9508

Split Complementary

Split-complementary colors differ from the complementary color scheme. The scheme consists of three colors, the original color and two neighbors of the complement color.



111.9440, 37.9886, -98.1749



122.1530, 1.8966, 91.9508



97.1870, -10.9382, -85.2330

Square

The Square scheme is like the rectangle color scheme, but the four colors are evenly spaced on the color wheel.



122.1530, 1.8966, 91.9508



119.9860, -59.1531, 26.3223



105.5600, 13.5279, -92.5761



106.2460, 66.9267, -93.1777

Rectangle

The Rectangle color scheme consists of four colors that form a rectangle on the color wheel.



122.1530, 1.8966, 91.9508



123.3380, -42.5646, 72.4946



105.5600, 13.5279, -92.5761



113.4890, 51.5239, -99.5299

Sweetspot

The Sweet Spot groups the original color and five complimentary colors.



122.1530, 1.8966, 91.9508



219.4260, 0.7760, 31.1984



116.3250, 54.5628, 46.1960



106.8220, 0.0878, 18.5731



0.0000, 0.0000, 0.0000



128.0000, 0.0000, 0.0000

Same Dimension

The Same Dimension uses a secret algorithm to generate beautiful new colors.



122.1530, 1.8966, 91.9508



113.8780, 2.5251, 123.7640



127.8680, -29.5149, 86.9388



107.0440, -0.0217, 6.9774



60.9310, 2.0060, 103.5465



17.4150, 0.7814, 29.4540

Inverse Universe

The Inverse Universe completely reimagines the original color for something new.



122.1530, 1.8966, 91.9508



113.8780, 2.5251, 123.7640



167.1320, 29.5149, -86.9388



107.0440, -0.0217, 6.9774



60.9310, 2.0060, 103.5465



17.4150, 0.7814, 29.4540

Previews

White Background



This preview shows how the YUV color 122.1530, 1.8966, 91.9508 looks on a white background.

Color Contrast Check

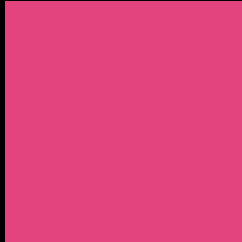
Large Text (above 18pt) WCAG AA ✓ Pass

Any Text WCAG AA ✗ Fail

Large Text (above 18pt) WCAG AAA ✗ Fail

Any Text WCAG AAA ✗ Fail

Black Background



This preview shows how the YUV color 122.1530, 1.8966, 91.9508 looks on a black background.

Color Contrast Check

Large Text (above 18pt) WCAG AA ✓ Pass

Any Text WCAG AA ✓ Pass

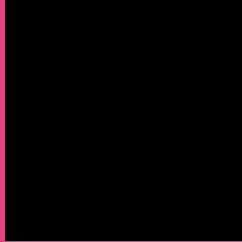
Large Text (above 18pt) WCAG AAA ✓ Pass

Any Text WCAG AAA × Fail

If you want to check with other color combinations, try the [Color Contrast Checker](#).

YUV 122.1530, 1.8966, 91.9508

Background



This preview shows how black text looks on a background with the YUV color 122.1530, 1.8966, 91.9508.



This preview shows how white text looks on a background with the YUV color 122.1530, 1.8966,

Color Blindness Simulation

Color vision deficiency is a very complex topic, and I could not describe the different causes any better than Wikipedia does, so if you want to learn more, you should check out their [article about color blindness](#).

Dichromacy



Original Color

122.1530, 1.8966, 91.9508

Protanopia

130.0820, 15.7356, -7.0879

Deuteranopia

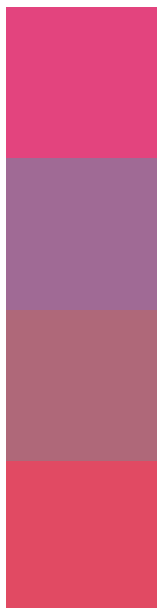
130.4810, -6.1531, 13.6102



Tritanopia

122.2240, -19.3374, 89.2576

Trichromacy



Original Color

122.1530, 1.8966, 91.9508

Protanomaly

127.0480, 10.8223, 28.8989

Deuteranomaly

127.1670, -3.0403, 41.9495

Tritanomaly

121.9990, -11.3385, 90.3319

Monochromacy



Original Color

122.1530, 1.8966, 91.9508

Achromatopsia

122.0000, 0.0000, 0.0000

Achromatomaly

121.7360, 0.6232, 33.5575

CSS Examples

Text

The CSS property to change the color of the text to YUV 122.1530, 1.8966, 91.9508 is called "color". The color property can be set on classes, ids or directly on the HTML element.

This example shows how text in the color `rgb(227, 68, 126)` looks like.

```
.text, #text, p{  
    color:rgb(227, 68, 126)  
}
```

If you want to add a text shadow in that color use the text-shadow property, you can generate a text shadow directly with our [CSS Text Shadow Generator](#).

Here you see how black text with a 4 pixel rgb(227, 68, 126) colored shadow looks like.

```
.shadow{ text-shadow: 4px 4px 2px rgb(227, 68, 126) }
```

Border

The CSS property to change the border of an element to YUV 122.1530, 1.8966, 91.9508 is called "border". The border property can be set on classes, ids or directly on the HTML element.

This example shows the color as border, it can be applied via the CSS property "border" or "border-color".

```
.border, #border, table{ border:4px solid rgb(227, 68, 126) }
```


If only the border color should be changed use the property `border-color`.

```
.border{ border-color:rgb(227, 68, 126) }
```

If you want to add a box shadow in that color use:

Here you see how a box with a 4 pixel `rgb(227, 68, 126)` colored shadow looks like.

```
.boxshadow{ -moz-box-shadow:4px 4px 4px  
4px rgb(227, 68, 126); -webkit-box-  
shadow:4px 4px 4px 4px rgb(227, 68, 126);  
box-shadow:4px 4px 4px 4px rgb(227, 68,  
126) }
```

Background

The CSS property to change the background color of an element to YUV 122.1530, 1.8966, 91.9508 is called "background". The background property can be set on classes, ids or directly on the HTML element.

```
.background, #background, body{  
background: rgb(227, 68, 126) }
```

If only the background color should be changed can be used:

```
.background{ background-color: rgb(227, 68,  
126) }
```

This example shows the color as background, it is applied via the CSS property "background".

To optimize and compress your CSS code, you can use our [online CSS compressor and optimizer](#) based on csstidy. If you want to create a linear or radial gradient as background or border, check our [CSS Gradient Generator](#).

Hey! You found this booklet interesting? Support Converting Colors with the new Membership Option!

The pro membership hides all ads, plus gives you double the colors in the color bucket, and more awesome pro features!

[Learn more, Memberships starting at \\$2.50/m!](#)

**Follow me
on Twitter!**

@ConvertingColor