

Converting Colors

YUV(122.7660, -11.2236,
100.1832)

Have a look what the booklet for
YUV(122.7660, -11.2236, 100.1832)
contains.

YUV(122.7660, -11.2236, 100.1832)	3
<i>Conversions</i>	4
<i>Details</i>	6
<i>Harmonies</i>	12
<i>Previews</i>	24
<i>Color Blindness Simulation</i>	28
<i>CSS Examples</i>	31

Color

**YUV(122.7660, -11.2236,
100.1832)**

Conversions

Conversions Part 1

Format	Color
Hex	ED4564
RGB	237, 69, 100
RGB Percent	93%, 27%, 39%
CMY	0.0706, 0.7294, 0.6078
CMYK	0.00, 0.71, 0.58, 0.07
HSL	349°, 82%, 60%
HSV	349°, 71%, 93%
XYZ	39.3534, 23.1809, 14.4568
YIQ	122.7660, 90.1770, 45.2570

Conversions

Conversions Part 2

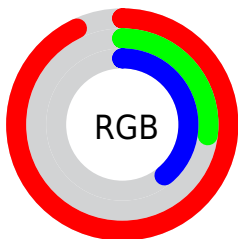
Format	Color
R_{YB}	237, 69, 100
Decimal	15549796
CIE Lab	55.26, 65.52, 20.83
CIE LCh	55, 68.748, 17.635
Yxy	23.1809, 0.5111, 0.3011
Android (android.graphics.Color)	4293739876 (0xFFED4564)
YUV	122.7660, -11.2236, 100.1832
Hunter-Lab	48.1465, 61.6438, 15.8998

Details

The YUV color **122.7660, -11.2236, 100.1832** is a dark color, and the websafe version is hex **FF3366**. The color can be described as middle muted rose. A complement of this color would be **183.2340, 11.2236, -100.1832**, and the grayscale version is **123.0000, 0.0000, 0.0000**.

A 20% lighter version of the original color is **168.5950, -8.6743, 75.7772**, and **58.1820, -2.0617, 101.5724** is the 20% darker color. If you saturate the color by 10%, you get **106.5120, -12.5774, 114.4380**, and if you desaturate by 10%, it is **139.0200, -9.8699, 85.9285**.

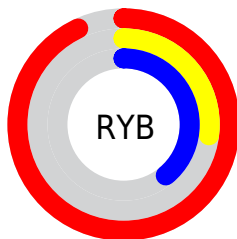
Distribution



Red (93%)

Green (27%)

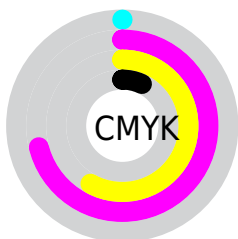
Blue (39%)



Red (93%)

Yellow (27%)

Blue (39%)

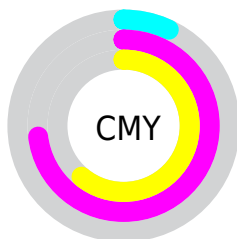


Cyan (0%)

Magenta (71%)

Yellow (58%)

Black (7%)



Cyan (7%)

Magenta (73%)

Yellow (61%)

Brightness & Saturation Gradients

These gradients show how the YUV color 122.7660, -11.2236, 100.1832 changes by changing the brightness by 10 percent. The first figure shows a shift by +10% for each color and the second figure -10%.

Similar to the brightness gradients but the following saturation gradients show a change of the YUV color 122.7660, -11.2236, 100.1832 by changing the saturation by 10% instead.

■ 122.7660,
-11.2236, 100.1832

■ 122.7660,
-11.2236, 100.1832

255.0000, 0.0000,
0.0000

■ 90.2160, -7.0085,
101.5426

■ 168.5950, -8.6743,
75.7772

■ 58.1820, -2.0617,
101.5724

■ 188.5820, -5.7099,
58.2486

■ 46.8180, -6.8123,
85.2286

■ 208.7970, -1.8719,
40.5200

■ 35.0410, -11.8522,
68.3700

■ 229.0120, 1.9661,
22.7915

■ 25.0450, -11.3612,
50.8265

■ 249.1300, 2.8939,
5.1480

■ 16.3740, -7.0864,
32.9980

■ 1.4950, -0.7370,

3.0739

■ 0.0000, 0.0000,
0.0000

■ 122.7660,
-11.2236, 100.1832

■ 122.7660,
-11.2236, 100.1832

■ 106.5120,
-12.5774, 114.4380

■ 139.0200, -9.8699,
85.9285

■ 90.7310, -14.6574,
128.2779

■ 154.8010, -7.7899,
72.0885

■ 75.8790, -15.7163,
141.3031

■ 171.0550, -6.4361,
57.8338

■ 187.3090, -5.0823,
43.5790

■ 203.0900, -3.0024,
29.7391

 219.3440, -1.6486,
15.4843

 235.5980, -0.2948,
1.2296

 249.6180, 2.6533,
-11.0660

Harmonies

Analogous

The Analogous color harmony consists of three colors that are next to each other on the color wheel.



127.4910, 16.0269, 86.3924



122.7660, -11.2236, 100.1832



125.6750, -40.2658, 81.8460

Triad

The Triadic color harmony groups three colors that are evenly spaced from another and form a triangle on the color wheel.



122.7660, -11.2236, 100.1832



108.1790, -32.1332, -53.6540



114.0880, 66.5116, -100.0552

Complementary

The Complementary color scheme is a pair of colors which are on the opposite of each other on the color wheel.



122.7660, -11.2236, 100.1832



183.2340, 11.2236, -100.1832

Split Complementary

Split-complementary colors differ from the complementary color scheme. The scheme consists of three colors, the original color and two neighbors of the complement color.



116.6520, 50.9506, -102.3038



122.7660, -11.2236, 100.1832



104.7160, 0.1400, -91.8359

Square

The Square scheme is like the rectangle color scheme, but the four colors are evenly spaced on the color wheel.



122.7660, -11.2236, 100.1832



119.8540, -59.0880, 5.3900



112.3710, 26.9321, -98.5494



123.3380, 60.9654, -47.6544

Rectangle

The Rectangle color scheme consists of four colors that form a rectangle on the color wheel.



122.7660, -11.2236, 100.1832



123.7500, -61.0087, 61.6093



112.3710, 26.9321, -98.5494



116.3390, 62.4439, -102.0293

Sweetspot

The Sweet Spot groups the original color and five complimentary colors.



122.7660, -11.2236, 100.1832



218.2860, -3.5920, 32.1982



128.2180, 53.6295, 65.5838



106.2520, -2.0962, 19.0730



0.0000, 0.0000, 0.0000



128.0000, 0.0000, 0.0000

Same Dimension

The Same Dimension uses a secret algorithm to generate beautiful new colors.



122.7660, -11.2236, 100.1832



107.4430, -14.5154, 129.4075



148.5820, -39.2339, 77.5426



109.5170, -0.7479, 6.5626



57.8810, -12.2663, 107.9754



17.2860, -3.5920, 32.1982

Inverse Universe

The Inverse Universe completely reimagines the original color for something new.



122.7660, -11.2236, 100.1832



107.4430, -14.5154, 129.4075



157.4180, 39.2339, -77.5426



109.5170, -0.7479, 6.5626



57.8810, -12.2663, 107.9754



17.2860, -3.5920, 32.1982

Previews

White Background



This preview shows how the YUV color 122.7660, -11.2236, 100.1832 looks on a white background.

Color Contrast Check

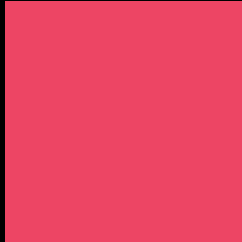
Large Text (above 18pt) WCAG AA ✓ Pass

Any Text WCAG AA ✗ Fail

Large Text (above 18pt) WCAG AAA ✗ Fail

Any Text WCAG AAA ✗ Fail

Black Background



This preview shows how the YUV color 122.7660, -11.2236, 100.1832 looks on a black background.

Color Contrast Check

Large Text (above 18pt) WCAG AA ✓ Pass

Any Text WCAG AA ✓ Pass

Large Text (above 18pt) WCAG AAA ✓ Pass

Any Text WCAG AAA × Fail

If you want to check with other color combinations, try the [Color Contrast Checker](#).

YUV 122.7660, -11.2236, 100.1832 Background



This preview shows how black text looks on a background with the YUV color 122.7660, -11.2236, 100.1832.



This preview shows how white text looks on a background with the YUV color 122.7660, -11.2236, 100.1832.

Color Blindness Simulation

Color vision deficiency is a very complex topic, and I could not describe the different causes any better than Wikipedia does, so if you want to learn more, you should check out their [article about color blindness](#).

Dichromacy



Original Color

122.7660, -11.2236, 100.1832

Protanopia

132.9680, -1.4632, 2.6591

Deuteranopia

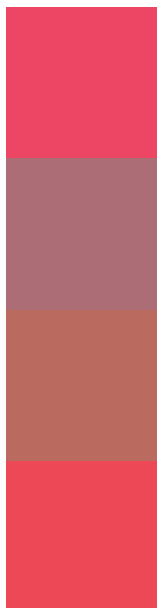
132.2790, -19.8575, 22.5573



Tritanopia

122.1930, -22.2801, 99.8087

Trichromacy



Original Color

122.7660, -11.2236, 100.1832

Protanomaly

129.2760, -5.0661, 38.3459

Deuteranomaly

128.9650, -16.7447, 50.8967

Tritanomaly

122.5180, -18.4964, 99.5237

Monochromacy



Original Color

122.7660, -11.2236, 100.1832

Achromatopsia

123.0000, 0.0000, 0.0000

Achromatomaly

122.6070, -3.7503, 36.3017

CSS Examples

Text

The CSS property to change the color of the text to YUV 122.7660, -11.2236, 100.1832 is called "color". The color property can be set on classes, ids or directly on the HTML element.

This example shows how text in the color `rgb(237, 69, 100)` looks like.

```
.text, #text, p{  
    color:rgb(237, 69, 100)  
}
```

If you want to add a text shadow in that color use the text-shadow property, you can generate a text shadow directly with our [CSS Text Shadow Generator](#).

Here you see how black text with a 4 pixel rgb(237, 69, 100) colored shadow looks like.

```
.shadow{ text-shadow: 4px 4px 2px rgb(237, 69, 100) }
```

Border

The CSS property to change the border of an element to YUV 122.7660, -11.2236, 100.1832 is called "border".

The border property can be set on classes, ids or directly on the HTML element.

This example shows the color as border, it can be applied via the CSS property "border" or "border-color".

```
.border, #border, table{ border:4px solid rgb(237, 69, 100) }
```


If only the border color should be changed use the property `border-color`.

```
.border{ border-color:rgb(237, 69, 100) }
```

If you want to add a box shadow in that color use:

Here you see how a box with a 4 pixel `rgb(237, 69, 100)` colored shadow looks like.

```
.boxshadow{ -moz-box-shadow:4px 4px 4px  
4px rgb(237, 69, 100); -webkit-box-  
shadow:4px 4px 4px 4px rgb(237, 69, 100);  
box-shadow:4px 4px 4px 4px rgb(237, 69,  
100) }
```

Background

The CSS property to change the background color of an element to YUV 122.7660, -11.2236, 100.1832 is called "background". The background property can be set on classes, ids or directly on the HTML element.

```
.background, #background, body{  
background: rgb(237, 69, 100) }
```

If only the background color should be changed can be used:

```
.background{ background-color: rgb(237, 69,  
100) }
```

This example shows the color as background, it is applied via the CSS property "background".

To optimize and compress your CSS code, you can use our [online CSS compressor and optimizer](#) based on csstidy. If you want to create a linear or radial gradient as background or border, check our [CSS Gradient Generator](#).

Hey! You found this booklet interesting? Support Converting Colors with the new Membership Option!

The pro membership hides all ads, plus gives you double the colors in the color bucket, and more awesome pro features!

[Learn more, Memberships starting at \\$2.50/m!](#)

**Follow me
on Twitter!**

@ConvertingColor