

Converting Colors

YUV(123.0380, -27.6267,
41.1857)

Have a look what the booklet for
YUV(123.0380, -27.6267, 41.1857)
contains.

YUV(123.0380, -27.6267, 41.1857)	3
<i>Conversions</i>	4
<i>Details</i>	6
<i>Harmonies</i>	12
<i>Previews</i>	24
<i>Color Blindness Simulation</i>	28
<i>CSS Examples</i>	31

Color

**YUV(123.0380, -27.6267,
41.1857)**

Conversions

Conversions Part 1

Format	Color
Hex	AA6E43
RGB	170, 110, 67
RGB Percent	67%, 43%, 26%
CMY	0.3333, 0.5686, 0.7373
CMYK	0.00, 0.35, 0.61, 0.33
HSL	25°, 43%, 46%
HSV	25°, 61%, 67%
XYZ	23.1666, 20.1032, 7.9695
YIQ	123.0380, 49.5630, -0.6530

Conversions

Conversions Part 2

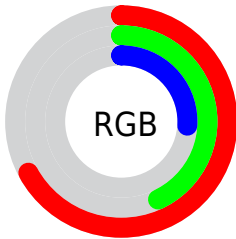
Format	Color
R_{YB}	170, 141, 67
Decimal	11169347
CIE Lab	51.95, 19.42, 33.50
CIE LCh	52, 38.725, 59.894
Yxy	20.1032, 0.4521, 0.3923
Android (android.graphics.Color)	4289359427 (0xFFAA6E43)
YUV	123.0380, -27.6267, 41.1857
Hunter-Lab	44.8365, 13.7653, 20.8471

Details

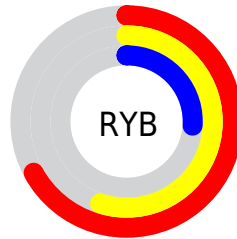
The YUV color **123.0380, -27.6267, 41.1857** is a dark color, and the websafe version is hex **996633**. A complement of this color would be **113.9620, 27.6267, -41.1857**, and the grayscale version is **123.0000, 0.0000, 0.0000**.

A 20% lighter version of the original color is **176.4900, -29.8216, 45.1743**, and **72.8740, -25.5739, 36.0675** is the 20% darker color. If you saturate the color by 10%, you get **115.2300, -32.1584, 48.0333**, and if you desaturate by 10%, it is **130.8460, -23.0951, 34.3381**.

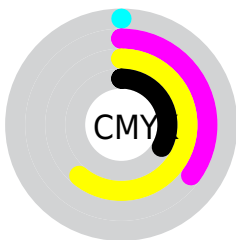
Distribution



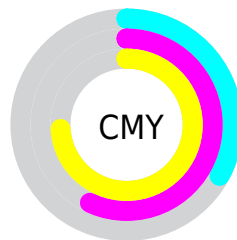
- Red (67%)
- Green (43%)
- Blue (26%)



- Red (67%)
- Yellow (55%)
- Blue (26%)



- Cyan (0%)
- Magenta (35%)
- Yellow (61%)
- Black (33%)



- Cyan (33%)
- Magenta (57%)
- Yellow (74%)

Brightness & Saturation Gradients

These gradients show how the YUV color 123.0380, -27.6267, 41.1857 changes by changing the brightness by 10 percent. The first figure shows a shift by +10% for each color and the second figure -10%.

Similar to the brightness gradients but the following saturation gradients show a change of the YUV color 123.0380, -27.6267, 41.1857 by changing the saturation by 10% instead.

■ 123.0380,
-27.6267, 41.1857

■ 123.0380,
-27.6267, 41.1857

255.0000, 0.0000,
0.0000

■ 97.3690, -26.3109,
39.1414

■ 176.4900,
-29.8216, 45.1743

■ 72.8740, -25.5739,
36.0675

■ 203.3760,
-30.2584, 45.2742

■ 48.9060, -24.1107,
33.4084

■ 222.8900,
-26.5678, 28.1605

■ 28.8050, -14.2009,
28.2350

■ 242.4040,
-22.8772, 11.0467

■ 11.0630, -5.4541,
22.7467

■ 251.4660,
-13.5407, 3.0993

■ 0.0000, 0.0000,
0.0000

254.7720, -0.8736,

0.2000

■ 123.0380,
-27.6267, 41.1857

■ 123.0380,
-27.6267, 41.1857

■ 115.2300,
-32.1584, 48.0333

■ 130.8460,
-23.0951, 34.3381

■ 107.4220,
-36.6900, 54.8809

■ 138.6540,
-18.5634, 27.4904

■ 99.6140, -41.2217,
61.7285

■ 146.4620,
-14.0318, 20.6428

■ 92.5070, -45.6060,
67.9614

■ 154.2700, -9.5001,
13.7952

■ 162.0780, -4.9685,
6.9476

■ 169.2990, -0.1474,
0.6148

■ 177.1070, 4.3842,
-6.2328

■ 184.9150, 8.9159,
-13.0805

■ 192.7230, 13.4476,
-19.9281

Harmonies

Analogous

The Analogous color harmony consists of three colors that are next to each other on the color wheel.



124.0300, -15.2978, 53.4707



123.0380, -27.6267, 41.1857



121.0540, -32.0716, 20.1236

Triad

The Triadic color harmony groups three colors that are evenly spaced from another and form a triangle on the color wheel.



123.0380, -27.6267, 41.1857



96.7890, 12.9220, -84.8840



125.8130, 27.2072, 0.1640

Complementary

The Complementary color scheme is a pair of colors which are on the opposite of each other on the color wheel.



123.0380, -27.6267, 41.1857



113.9620, 27.6267, -41.1857

Split Complementary

Split-complementary colors differ from the complementary color scheme. The scheme consists of three colors, the original color and two neighbors of the complement color.



115.6440, 36.6575, -44.4148



123.0380, -27.6267, 41.1857



99.9640, 27.6257, -87.6684

Square

The Square scheme is like the rectangle color scheme, but the four colors are evenly spaced on the color wheel.



123.0380, -27.6267, 41.1857



111.4840, -11.0846, -38.1355



100.4660, 39.7033, -88.1087



127.8080, 14.8847, 32.6174

Rectangle

The Rectangle color scheme consists of four colors that form a rectangle on the color wheel.



123.0380, -27.6267, 41.1857



118.9270, -29.5440, 2.6950



100.4660, 39.7033, -88.1087



124.2350, 30.4501, -13.3611

Sweetspot

The Sweet Spot groups the original color and five complimentary colors.



123.0380, -27.6267, 41.1857



203.9390, -10.8159, 15.8395



104.6370, 11.0250, 57.3234



101.0460, -6.4317, 9.6067



240.0000, 0.0000, 0.0000



112.0000, 0.0000, 0.0000

Same Dimension

The Same Dimension uses a secret algorithm to generate beautiful new colors.



123.0380, -27.6267, 41.1857



148.3540, -43.5585, 64.5875



152.9750, -42.3857, 14.9309



80.1530, -2.0474, 3.3738



80.6460, -39.7585, 59.0695



11.2630, -5.5527, 7.6623

Inverse Universe

The Inverse Universe completely reimagines the original color for something new.



113.9620, 27.6267, -41.1857



133.6460, 43.5585, -64.5875



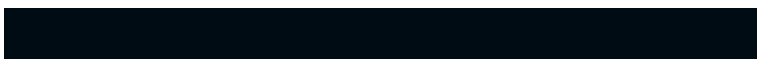
84.0250, 42.3857, -14.9309



79.8470, 2.0474, -3.3738



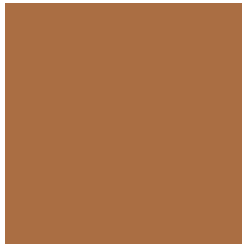
67.3540, 39.7585, -59.0695



9.3240, 5.2633, -8.1771

Previews

White Background



This preview shows how the YUV color 123.0380, -27.6267, 41.1857 looks on a white background.

Color Contrast Check

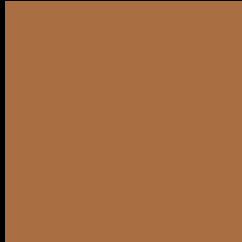
Large Text (above 18pt) WCAG AA ✓ Pass

Any Text WCAG AA × Fail

Large Text (above 18pt) WCAG AAA × Fail

Any Text WCAG AAA × Fail

Black Background



This preview shows how the YUV color 123.0380, -27.6267, 41.1857 looks on a black background.

Color Contrast Check

Large Text (above 18pt) WCAG AA ✓ Pass

Any Text WCAG AA ✓ Pass

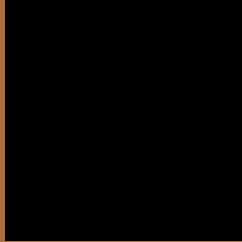
Large Text (above 18pt) WCAG AAA ✓ Pass

Any Text WCAG AAA × Fail

If you want to check with other color combinations, try the [Color Contrast Checker](#).

YUV 123.0380, -27.6267, 41.1857

Background



This preview shows how black text looks on a background with the YUV color 123.0380, -27.6267, 41.1857.



This preview shows how white text looks on a background with the YUV color 123.0380, -27.6267, 41.1857.

Color Blindness Simulation

Color vision deficiency is a very complex topic, and I could not describe the different causes any better than Wikipedia does, so if you want to learn more, you should check out their [article about color blindness](#).

Dichromacy



Original Color

123.0380, -27.6267, 41.1857

Protanopia

121.6600, -24.4824, 12.5762

Deuteranopia

122.1240, -28.1621, 26.2013



Tritanopia

126.1300, -6.9661, 41.1050

Trichromacy



Original Color

123.0380, -27.6267, 41.1857

Protanomaly

122.0850, -25.6779, 22.7275

Deuteranomaly

122.5700, -27.8890, 31.9491

Tritanomaly

125.1810, -14.3862, 41.0603

Monochromacy



Original Color

123.0380, -27.6267, 41.1857

Achromatopsia

123.0000, 0.0000, 0.0000

Achromatomaly

122.8680, -9.7949, 15.0248

CSS Examples

Text

The CSS property to change the color of the text to YUV 123.0380, -27.6267, 41.1857 is called "color". The color property can be set on classes, ids or directly on the HTML element.

This example shows how text in the color `rgb(170, 110, 67)` looks like.

```
.text, #text, p{  
    color:rgb(170, 110, 67)  
}
```

If you want to add a text shadow in that color use the text-shadow property, you can generate a text shadow directly with our [CSS Text Shadow Generator](#).

Here you see how black text with a 4 pixel rgb(170, 110, 67) colored shadow looks like.

```
.shadow{ text-shadow: 4px 4px 2px rgb(170, 110, 67) }
```

Border

The CSS property to change the border of an element to YUV 123.0380, -27.6267, 41.1857 is called "border".

The border property can be set on classes, ids or directly on the HTML element.

This example shows the color as border, it can be applied via the CSS property "border" or "border-color".

```
.border, #border, table{ border:4px solid rgb(170, 110, 67) }
```


If only the border color should be changed use the property `border-color`.

```
.border{ border-color:rgb(170, 110, 67) }
```

If you want to add a box shadow in that color use:

Here you see how a box with a 4 pixel `rgb(170, 110, 67)` colored shadow looks like.

```
.boxshadow{ -moz-box-shadow:4px 4px 4px  
4px rgb(170, 110, 67); -webkit-box-  
shadow:4px 4px 4px 4px rgb(170, 110, 67);  
box-shadow:4px 4px 4px 4px rgb(170, 110,  
67) }
```

Background

The CSS property to change the background color of an element to YUV 123.0380, -27.6267, 41.1857 is called "background". The background property can be set on classes, ids or directly on the HTML element.

```
.background, #background, body{  
background: rgb(170, 110, 67) }
```

If only the background color should be changed can be used:

```
.background{ background-color: rgb(170,  
110, 67) }
```

This example shows the color as background, it is applied via the CSS property "background".

To optimize and compress your CSS code, you can use our [online CSS compressor and optimizer](#) based on csstidy. If you want to create a linear or radial gradient as background or border, check our [CSS Gradient Generator](#).

Hey! You found this booklet interesting? Support Converting Colors with the new Membership Option!

The pro membership hides all ads, plus gives you double the colors in the color bucket, and more awesome pro features!

[Learn more, Memberships starting at \\$2.50/m!](#)

**Follow me
on Twitter!**

@ConvertingColor