

Converting Colors

YUV(123.2570, 0.8593, 97.9986)

Have a look what the booklet for
YUV(123.2570, 0.8593, 97.9986)
contains.

YUV(123.2570, 0.8593, 97.9986)	3
<i>Conversions</i>	4
<i>Details</i>	6
<i>Harmonies</i>	12
<i>Previews</i>	24
<i>Color Blindness Simulation</i>	28
<i>CSS Examples</i>	31

Color

**YUV(123.2570, 0.8593,
97.9986)**

Conversions

Conversions Part 1

Format	Color
Hex	EB427D
RGB	235, 66, 125
RGB Percent	92%, 26%, 49%
CMY	0.0784, 0.7412, 0.5098
CMYK	0.00, 0.72, 0.47, 0.08
HSL	339°, 81%, 59%
HSV	339°, 72%, 92%
XYZ	39.9108, 23.0393, 21.7455
YIQ	123.2570, 81.7850, 54.1770

Conversions

Conversions Part 2

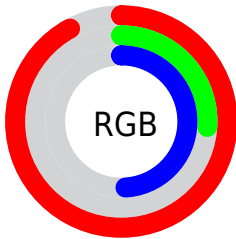
Format	Color
R_{YB}	235, 66, 125
Decimal	15417981
CIE _{Lab}	55.11, 67.90, 5.70
CIE _{LCh}	55, 68.134, 4.802
Yxy	23.0393, 0.4712, 0.2720
Android (android.graphics.Color)	4293608061 (0xFFEB427D)
YUV	123.2570, 0.8593, 97.9986
Hunter-Lab	47.9992, 64.4221, 6.7388

Details

The YUV color **123.2570, 0.8593, 97.9986** is a dark color, and the websafe version is hex **CC3366**. The color can be described as middle muted rose. A complement of this color would be **177.7430, -0.8593, -97.9986**, and the grayscale version is **123.0000, 0.0000, 0.0000**.

A 20% lighter version of the original color is **170.3850, 3.2612, 74.2074**, and **60.5050, 8.1320, 98.6581** is the 20% darker color. If you saturate the color by 10%, you get **108.0460, 0.9633, 111.3387**, and if you desaturate by 10%, it is **139.0550, 0.4659, 84.1438**.

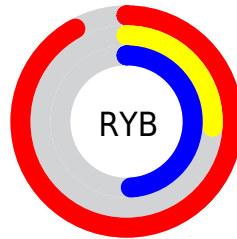
Distribution



Red (92%)

Green (26%)

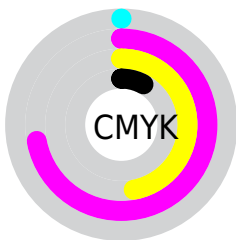
Blue (49%)



Red (92%)

Yellow (26%)

Blue (49%)

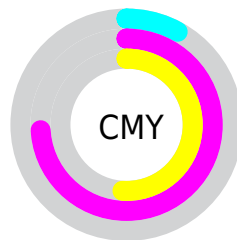


Cyan (0%)

Magenta (72%)

Yellow (47%)

Black (8%)



Cyan (8%)

Magenta (74%)

Yellow (51%)

Brightness & Saturation Gradients

These gradients show how the YUV color 123.2570, 0.8593, 97.9986 changes by changing the brightness by 10 percent. The first figure shows a shift by +10% for each color and the second figure -10%.

Similar to the brightness gradients but the following saturation gradients show a change of the YUV color 123.2570, 0.8593, 97.9986 by changing the saturation by 10% instead.

123.2570, 0.8593,
97.9986

123.2570, 0.8593,
97.9986

255.0000, 0.0000,
0.0000

89.4190, 5.2164,
100.4875

170.3850, 3.2612,
74.2074

60.5050, 8.1320,
98.6581

190.6000, 7.0992,
56.4788

48.9130, 2.5079,
82.5143

210.8150, 10.9372,
38.7502

37.5490, -2.2427,
66.1705

230.9330, 11.8650,
21.1068

26.1420, -8.4510,
50.7415

247.9560, 3.4727,
6.1776

16.6730, -7.2338,
33.6128

2.9900, -1.4741,

6.1478

■ 0.0000, 0.0000,
0.0000

■ 123.2570, 0.8593,
97.9986

■ 123.2570, 0.8593,
97.9986

■ 108.0460, 0.9633,
111.3387

■ 139.0550, 0.4659,
84.1438

■ 92.1340, 0.9199,
125.2935

■ 154.3800, 0.7987,
70.7037

■ 79.6130, 1.1768,
136.2744

■ 170.1780, 0.4052,
56.8489

■ 185.3890, 0.3012,
43.5088

■ 201.1870, -0.0922,
29.6540

216.5120, 0.2406,
16.2140

232.3100, -0.1528,
2.3591

247.5210, -0.2569,
-10.9809

249.0200, 2.9481,
-12.2955

Harmonies

Analogous

The Analogous color harmony consists of three colors that are next to each other on the color wheel.



131.4870, 25.3959, 67.9789



123.2570, 0.8593, 97.9986



124.0580, -27.6366, 91.1571

Triad

The Triadic color harmony groups three colors that are evenly spaced from another and form a triangle on the color wheel.



123.2570, 0.8593, 97.9986



113.9690, -50.2707, -22.7748



115.8830, 60.6967, -101.6294

Complementary

The Complementary color scheme is a pair of colors which are on the opposite of each other on the color wheel.



123.2570, 0.8593, 97.9986



177.7430, -0.8593, -97.9986

Split Complementary

Split-complementary colors differ from the complementary color scheme. The scheme consists of three colors, the original color and two neighbors of the complement color.



115.3180, 40.7622, -101.1339



123.2570, 0.8593, 97.9986



99.9910, -10.3486, -87.6921

Square

The Square scheme is like the rectangle color scheme, but the four colors are evenly spaced on the color wheel.



123.2570, 0.8593, 97.9986



122.3340, -60.3107, 24.2631



108.7060, 15.4279, -95.3352



108.4460, 70.2791, -95.1071

Rectangle

The Rectangle color scheme consists of four colors that form a rectangle on the color wheel.



123.2570, 0.8593, 97.9986



125.6110, -46.6432, 74.0092



108.7060, 15.4279, -95.3352



116.3900, 55.0237, -102.0740

Sweetspot

The Sweet Spot groups the original color and five complimentary colors.



123.2570, 0.8593, 97.9986



217.9100, 0.0444, 32.5279



118.1560, 57.6041, 50.7292



105.5340, 0.2297, 19.7027



0.0000, 0.0000, 0.0000



128.0000, 0.0000, 0.0000

Same Dimension

The Same Dimension uses a secret algorithm to generate beautiful new colors.



123.2570, 0.8593, 97.9986



110.1450, 0.9145, 127.0378



131.2060, -32.1466, 91.0273



109.7450, 0.1257, 6.3626



61.3010, 0.8376, 104.9760



18.3120, 0.3392, 31.2984

Inverse Universe

The Inverse Universe completely reimagines the original color for something new.



123.2570, 0.8593, 97.9986



110.1450, 0.9145, 127.0378



169.7940, 32.1466, -91.0273



109.7450, 0.1257, 6.3626



61.3010, 0.8376, 104.9760



18.3120, 0.3392, 31.2984

Previews

White Background



This preview shows how the YUV color 123.2570, 0.8593, 97.9986 looks on a white background.

Color Contrast Check

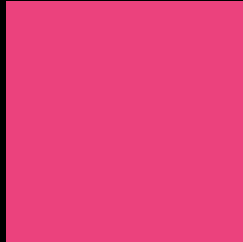
Large Text (above 18pt) WCAG AA ✓ Pass

Any Text WCAG AA ✗ Fail

Large Text (above 18pt) WCAG AAA ✗ Fail

Any Text WCAG AAA ✗ Fail

Black Background



This preview shows how the YUV color 123.2570, 0.8593, 97.9986 looks on a black background.

Color Contrast Check

Large Text (above 18pt) WCAG AA ✓ Pass

Any Text WCAG AA ✓ Pass

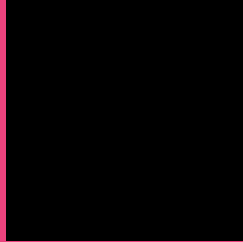
Large Text (above 18pt) WCAG AAA ✓ Pass

Any Text WCAG AAA × Fail

If you want to check with other color combinations, try the [Color Contrast Checker](#).

YUV 123.2570, 0.8593, 97.9986

Background



This preview shows how black text looks on a background with the YUV color 123.2570, 0.8593, 97.9986.



This preview shows how white text looks on a background with the YUV color 123.2570, 0.8593,

Color Blindness Simulation

Color vision deficiency is a very complex topic, and I could not describe the different causes any better than Wikipedia does, so if you want to learn more, you should check out their [article about color blindness](#).

Dichromacy



Original Color

123.2570, 0.8593, 97.9986

Protanopia

132.7400, 14.4252, -6.7880

Deuteranopia

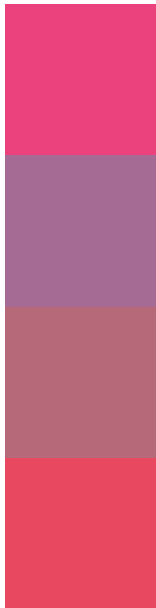
133.6230, -8.1951, 15.2396



Tritanopia

123.2140, -20.8115, 95.4053

Trichromacy



Original Color

123.2570, 0.8593, 97.9986

Protanomaly

129.1300, 9.7959, 31.4580

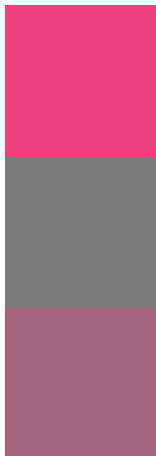
Deuteranomaly

129.7330, -4.7984, 45.8382

Tritanomaly

122.9890, -12.8126, 96.4796

Monochromacy



Original Color

123.2570, 0.8593, 97.9986

Achromatopsia

123.0000, 0.0000, 0.0000

Achromatomaly

123.0460, 0.4703, 35.9167

CSS Examples

Text

The CSS property to change the color of the text to YUV 123.2570, 0.8593, 97.9986 is called "color". The color property can be set on classes, ids or directly on the HTML element.

This example shows how text in the color `rgb(235, 66, 125)` looks like.

```
.text, #text, p{  
    color:rgb(235, 66, 125)  
}
```

If you want to add a text shadow in that color use the text-shadow property, you can generate a text shadow directly with our [CSS Text Shadow Generator](#).

Here you see how black text with a 4 pixel rgb(235, 66, 125) colored shadow looks like.

```
.shadow{ text-shadow: 4px 4px 2px rgb(235, 66, 125) }
```

Border

The CSS property to change the border of an element to YUV 123.2570, 0.8593, 97.9986 is called "border". The border property can be set on classes, ids or directly on the HTML element.

This example shows the color as border, it can be applied via the CSS property "border" or "border-color".

```
.border, #border, table{ border:4px solid rgb(235, 66, 125) }
```


If only the border color should be changed use the property `border-color`.

```
.border{ border-color:rgb(235, 66, 125) }
```

If you want to add a box shadow in that color use:

Here you see how a box with a 4 pixel `rgb(235, 66, 125)` colored shadow looks like.

```
.boxshadow{ -moz-box-shadow:4px 4px 4px  
4px rgb(235, 66, 125); -webkit-box-  
shadow:4px 4px 4px 4px rgb(235, 66, 125);  
box-shadow:4px 4px 4px 4px rgb(235, 66,  
125) }
```

Background

The CSS property to change the background color of an element to YUV 123.2570, 0.8593, 97.9986 is called "background". The background property can be set on classes, ids or directly on the HTML element.

```
.background, #background, body{  
background: rgb(235, 66, 125) }
```

If only the background color should be changed can be used:

```
.background{ background-color: rgb(235, 66,  
125) }
```

This example shows the color as background, it is applied via the CSS property "background".

To optimize and compress your CSS code, you can use our [online CSS compressor and optimizer](#) based on csstidy. If you want to create a linear or radial gradient as background or border, check our [CSS Gradient Generator](#).

Hey! You found this booklet interesting? Support Converting Colors with the new Membership Option!

The pro membership hides all ads, plus gives you double the colors in the color bucket, and more awesome pro features!

[Learn more, Memberships starting at \\$2.50/m!](#)

**Follow me
on Twitter!**

@ConvertingColor