

Converting Colors

YUV(123.9590, -14.2768,
52.6560)

Have a look what the booklet for
YUV(123.9590, -14.2768, 52.6560)
contains.

YUV(123.9590, -14.2768, 52.6560)	3
<i>Conversions</i>	4
<i>Details</i>	6
<i>Harmonies</i>	12
<i>Previews</i>	24
<i>Color Blindness Simulation</i>	28
<i>CSS Examples</i>	31

Color

**YUV(123.9590, -14.2768,
52.6560)**

Conversions

Conversions Part 1

Format	Color
Hex	B8635F
RGB	184, 99, 95
RGB Percent	72%, 39%, 37%
CMY	0.2784, 0.6118, 0.6275
CMYK	0.00, 0.46, 0.48, 0.28
HSL	3°, 39%, 55%
HSV	3°, 48%, 72%
XYZ	26.2946, 19.9403, 13.2895
YIQ	123.9590, 51.9440, 16.7760

Conversions

Conversions Part 2

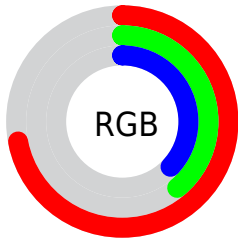
Format	Color
R_{YB}	184, 99, 95
Decimal	12084063
CIE _{Lab}	51.77, 33.69, 17.64
CIE _{LCh}	52, 38.023, 27.635
Yxy	19.9403, 0.4417, 0.3350
Android (android.graphics.Color)	4290274143 (0xFFB8635F)
YUV	123.9590, -14.2768, 52.6560
Hunter-Lab	44.6545, 26.9634, 13.6131

Details

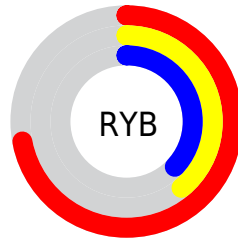
The YUV color **123.9590, -14.2768, 52.6560** is a dark color, and the websafe version is hex **CC6666**. A complement of this color would be **155.0410, 14.2768, -52.6560**, and the grayscale version is **124.0000, 0.0000, 0.0000**.

A 20% lighter version of the original color is **177.8240, -16.1822, 57.1594**, and **72.3220, -11.4977, 47.9526** is the 20% darker color. If you saturate the color by 10%, you get **111.3410, -16.9301, 63.7219**, and if you desaturate by 10%, it is **136.5770, -11.6235, 41.5900**.

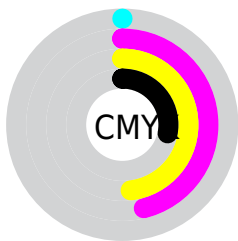
Distribution



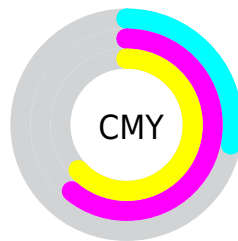
- Red (72%)
- Green (39%)
- Blue (37%)



- Red (72%)
- Yellow (39%)
- Blue (37%)



- Cyan (0%)
- Magenta (46%)
- Yellow (48%)
- Black (28%)



- Cyan (28%)
- Magenta (61%)
- Yellow (63%)

Brightness & Saturation Gradients

These gradients show how the YUV color 123.9590, -14.2768, 52.6560 changes by changing the brightness by 10 percent. The first figure shows a shift by +10% for each color and the second figure -10%.

Similar to the brightness gradients but the following saturation gradients show a change of the YUV color 123.9590, -14.2768, 52.6560 by changing the saturation by 10% instead.

■ 123.9590,
-14.2768, 52.6560

■ 123.9590,
-14.2768, 52.6560

■ 255.0000, 0.0000,
0.0000

■ 97.8770, -13.2504,
50.0969

■ 177.8240,
-16.1822, 57.1594

■ 72.3220, -11.4977,
47.9526

■ 200.9260,
-14.2605, 47.4229

■ 47.7670, -9.7451,
45.8083

■ 219.8530,
-10.2805, 30.8239

■ 22.0550, -9.8871,
44.6788

■ 240.0680, -6.4425,
13.0954

■ 14.4660, -6.6387,
29.4093

■ 0.0000, 0.0000,
0.0000

■ 123.9590,
-14.2768, 52.6560

■ 123.9590,
-14.2768, 52.6560

■ 111.3410,
-16.9301, 63.7219

■ 136.5770,
-11.6235, 41.5900

■ 99.1960, -20.3096,
74.3731

■ 148.7220, -8.2439,
30.9388

■ 86.5780, -22.9630,
85.4391

■ 161.3400, -5.5906,
19.8728

■ 74.4330, -26.3425,
96.0903

■ 173.4850, -2.2111,
9.2217

■ 61.8150, -28.9958,
107.1562

■ 186.1030, 0.4422,
-1.8443


■ 59.7120, -29.4380,
109.0006

■ 198.1340, 3.3849,
-12.3955

■ 210.8660, 6.4751,
-23.5615

■ 223.4840, 9.1284,

-34.6275

 233.7710, 10.4659,
-43.6492

Harmonies

Analogous

The Analogous color harmony consists of three colors that are next to each other on the color wheel.



125.8350, 0.5743, 49.2567



123.9590, -14.2768, 52.6560



122.6790, -26.4637, 41.5005

Triad

The Triadic color harmony groups three colors that are evenly spaced from another and form a triangle on the color wheel.



123.9590, -14.2768, 52.6560



111.8650, -12.2584, -34.9616



114.5080, 36.2316, -47.8035

Complementary

The Complementary color scheme is a pair of colors which are on the opposite of each other on the color wheel.



123.9590, -14.2768, 52.6560



155.0410, 14.2768, -52.6560

Split Complementary

Split-complementary colors differ from the complementary color scheme. The scheme consists of three colors, the original color and two neighbors of the complement color.



100.1240, 38.3929, -87.8087



123.9590, -14.2768, 52.6560



95.8600, 11.9010, -84.0692

Square

The Square scheme is like the rectangle color scheme, but the four colors are evenly spaced on the color wheel.



123.9590, -14.2768, 52.6560



117.3930, -26.3227, -3.8527



99.6220, 26.3154, -87.3685



125.2040, 27.5074, -2.8099

Rectangle

The Rectangle color scheme consists of four colors that form a rectangle on the color wheel.



123.9590, -14.2768, 52.6560



121.7500, -30.9357, 29.1603



99.6220, 26.3154, -87.3685



105.6900, 40.0858, -70.7651

Sweetspot

The Sweet Spot groups the original color and five complimentary colors.



123.9590, -14.2768, 52.6560



215.3510, -5.5960, 21.6172



131.4150, 24.4454, 46.1170



105.1650, -3.5323, 13.0103



247.0000, 0.0000, 0.0000



120.0000, 0.0000, 0.0000

Same Dimension

The Same Dimension uses a secret algorithm to generate beautiful new colors.



123.9590, -14.2768, 52.6560



146.0830, -22.2259, 82.3652



149.2000, -26.7206, 30.5196



85.6910, -1.3267, 5.5330



50.7530, -25.0212, 92.3016



8.9590, -4.4168, 16.6990

Inverse Universe

The Inverse Universe completely reimagines the original color for something new.



155.0410, 14.2768, -52.6560



194.3300, 22.5153, -81.8504



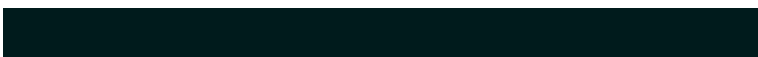
129.8000, 26.7206, -30.5196



88.7220, 1.6161, -5.0182



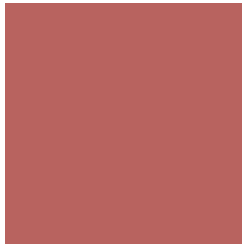
105.2470, 25.0212, -92.3016



19.0410, 4.4168, -16.6990

Previews

White Background



This preview shows how the YUV color 123.9590, -14.2768, 52.6560 looks on a white background.

Color Contrast Check

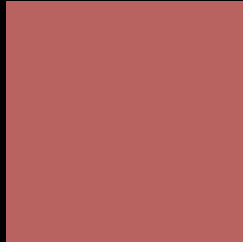
Large Text (above 18pt) WCAG AA ✓ Pass

Any Text WCAG AA × Fail

Large Text (above 18pt) WCAG AAA × Fail

Any Text WCAG AAA × Fail

Black Background



This preview shows how the YUV color 123.9590, -14.2768, 52.6560 looks on a black background.

Color Contrast Check

Large Text (above 18pt) WCAG AA ✓ Pass

Any Text WCAG AA ✓ Pass

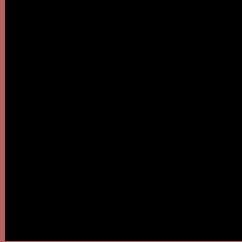
Large Text (above 18pt) WCAG AAA ✓ Pass

Any Text WCAG AAA × Fail

If you want to check with other color combinations, try the [Color Contrast Checker](#).

YUV 123.9590, -14.2768, 52.6560

Background



This preview shows how black text looks on a background with the YUV color 123.9590, -14.2768, 52.6560.



This preview shows how white text looks on a background with the YUV color 123.9590, -14.2768, 52.6560.

Color Blindness Simulation

Color vision deficiency is a very complex topic, and I could not describe the different causes any better than Wikipedia does, so if you want to learn more, you should check out their [article about color blindness](#).

Dichromacy



Original Color

123.9590, -14.2768, 52.6560

Protanopia

123.8560, -8.3100, 5.3883

Deuteranopia

123.9950, -15.7735, 19.2984



Tritanopia

124.8110, -9.7668, 52.7858

Trichromacy



Original Color

123.9590, -14.2768, 52.6560

Protanomaly

124.0970, -10.4008, 22.7169

Deuteranomaly

124.1860, -15.3747, 31.4089

Tritanomaly

124.3550, -11.5140, 53.1857

Monochromacy



Original Color

123.9590, -14.2768, 52.6560

Achromatopsia

124.0000, 0.0000, 0.0000

Achromatomaly

124.0410, -5.4432, 19.2580

CSS Examples

Text

The CSS property to change the color of the text to YUV 123.9590, -14.2768, 52.6560 is called "color". The color property can be set on classes, ids or directly on the HTML element.

This example shows how text in the color `rgb(184, 99, 95)` looks like.

```
.text, #text, p{  
    color:rgb(184, 99, 95)  
}
```

If you want to add a text shadow in that color use the text-shadow property, you can generate a text shadow directly with our [CSS Text Shadow Generator](#).

Here you see how black text with a 4 pixel rgb(184, 99, 95) colored shadow looks like.

```
.shadow{ text-shadow: 4px 4px 2px rgb(184, 99, 95) }
```

Border

The CSS property to change the border of an element to YUV 123.9590, -14.2768, 52.6560 is called "border".

The border property can be set on classes, ids or directly on the HTML element.

This example shows the color as border, it can be applied via the CSS property "border" or "border-color".

```
.border, #border, table{ border:4px solid rgb(184, 99, 95) }
```


If only the border color should be changed use the property border-color.

```
.border{ border-color:rgb(184, 99, 95) }
```

If you want to add a box shadow in that color use:

Here you see how a box with a 4 pixel rgb(184, 99, 95) colored shadow looks like.

```
.boxshadow{ -moz-box-shadow:4px 4px 4px  
4px rgb(184, 99, 95); -webkit-box-  
shadow:4px 4px 4px 4px rgb(184, 99, 95);  
box-shadow:4px 4px 4px 4px rgb(184, 99,  
95) }
```

Background

The CSS property to change the background color of an element to YUV 123.9590, -14.2768, 52.6560 is called "background". The background property can be set on classes, ids or directly on the HTML element.

```
.background, #background, body{  
background: rgb(184, 99, 95) }
```

If only the background color should be changed can be used:

```
.background{ background-color: rgb(184, 99,  
95) }
```

This example shows the color as background, it is applied via the CSS property "background".

To optimize and compress your CSS code, you can use our [online CSS compressor and optimizer](#) based on csstidy. If you want to create a linear or radial gradient as background or border, check our [CSS Gradient Generator](#).

Hey! You found this booklet interesting? Support Converting Colors with the new Membership Option!

The pro membership hides all ads, plus gives you double the colors in the color bucket, and more awesome pro features!

[Learn more, Memberships starting at \\$2.50/m!](#)

**Follow me
on Twitter!**

@ConvertingColor