

Converting Colors

YUV(124.5170, -10.6079,
42.5196)

Have a look what the booklet for
YUV(124.5170, -10.6079, 42.5196)
contains.

YUV(124.5170, -10.6079, 42.5196)	3
<i>Conversions</i>	4
<i>Details</i>	6
<i>Harmonies</i>	12
<i>Previews</i>	24
<i>Color Blindness Simulation</i>	28
<i>CSS Examples</i>	31

Color

**YUV(124.5170, -10.6079,
42.5196)**

Conversions

Conversions Part 1

Format	Color
Hex	AD6867
RGB	173, 104, 103
RGB Percent	68%, 41%, 40%
CMY	0.3216, 0.5922, 0.5961
CMYK	0.00, 0.40, 0.40, 0.32
HSL	1°, 30%, 54%
HSV	1°, 40%, 68%
XYZ	24.6321, 19.7641, 15.3486
YIQ	124.5170, 41.4450, 14.3170

Conversions

Conversions Part 2

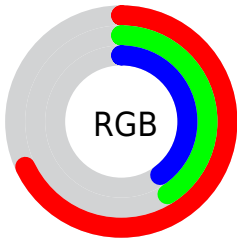
Format	Color
RYB	173, 104, 103
Decimal	11364455
CIELab	51.57, 27.53, 12.41
CIELCh	52, 30.200, 24.266
Yxy	19.7641, 0.4123, 0.3308
Android (android.graphics.Color)	4289554535 (0xFFAD6867)
YUV	124.5170, -10.6079, 42.5196
Hunter-Lab	44.4569, 21.1014, 10.6502

Details

The YUV color **124.5170, -10.6079, 42.5196** is a dark color, and the websafe version is hex **996666**. A complement of this color would be **151.4830, 10.6079, -42.5196**, and the grayscale version is **125.0000, 0.0000, 0.0000**.

A 20% lighter version of the original color is **177.8980, -11.7817, 45.6935**, and **73.9510, -8.8498, 38.6310** is the 20% darker color. If you saturate the color by 10%, you get **112.6000, -13.1138, 52.9708**, and if you desaturate by 10%, it is **136.4340, -8.1020, 32.0684**.

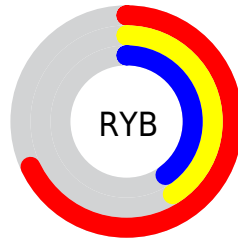
Distribution



Red (68%)

Green (41%)

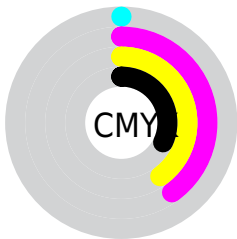
Blue (40%)



Red (68%)

Yellow (41%)

Blue (40%)

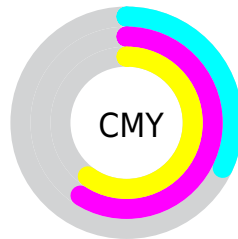


Cyan (0%)

Magenta (40%)

Yellow (40%)

Black (32%)



Cyan (32%)

Magenta (59%)

Yellow (60%)

Brightness & Saturation Gradients

These gradients show how the YUV color 124.5170, -10.6079, 42.5196 changes by changing the brightness by 10 percent. The first figure shows a shift by +10% for each color and the second figure -10%.

Similar to the brightness gradients but the following saturation gradients show a change of the YUV color 124.5170, -10.6079, 42.5196 by changing the saturation by 10% instead.

■ 124.5170,
-10.6079, 42.5196

■ 124.5170,
-10.6079, 42.5196

■ 255.0000, 0.0000,
0.0000

■ 98.7340, -9.7289,
40.5753

■ 177.8980,
-11.7817, 45.6935

■ 73.9510, -8.8498,
38.6310

■ 204.3000,
-11.4869, 44.4639

■ 49.9830, -7.3866,
35.9719

■ 223.8140, -7.7963,
27.3501

■ 25.9120, -6.3656,
35.1572

■ 244.1430, -3.5215,
9.5216

■ 12.8570, -6.3385,
26.4354

■ 0.0000, 0.0000,
0.0000

124.5170,
-10.6079, 42.5196

124.5170,
-10.6079, 42.5196

112.6000,
-13.1138, 52.9708

136.4340, -8.1020,
32.0684

100.5690,
-16.0565, 63.5220

148.4650, -5.1592,
21.5172

88.6520, -18.5624,
73.9732

160.3820, -2.6533,
11.0660

76.7350, -21.0684,
84.4244

172.2990, -0.1474,
0.6148

64.7040, -24.0111,
94.9756

184.3300, 2.7953,
-9.9364


52.9010, -26.0802,
105.3268

196.2470, 5.3012,
-20.3876

208.1640, 7.8071,
-30.8388

220.0810, 10.3131,

-41.2900

 230.4820, 12.0874,
-50.4117

Harmonies

Analogous

The Analogous color harmony consists of three colors that are next to each other on the color wheel.



125.6980, 1.6279, 37.9759



124.5170, -10.6079, 42.5196



123.5410, -20.4797, 35.4825

Triad

The Triadic color harmony groups three colors that are evenly spaced from another and form a triangle on the color wheel.



124.5170, -10.6079, 42.5196



114.8710, -11.2754, -23.5659



117.1090, 28.0473, -36.0526

Complementary

The Complementary color scheme is a pair of colors which are on the opposite of each other on the color wheel.



124.5170, -10.6079, 42.5196



151.4830, 10.6079, -42.5196

Split Complementary

Split-complementary colors differ from the complementary color scheme. The scheme consists of three colors, the original color and two neighbors of the complement color.



104.5410, 29.3133, -68.8805



124.5170, -10.6079, 42.5196



109.0170, 3.9356, -49.1269

Square

The Square scheme is like the rectangle color scheme, but the four colors are evenly spaced on the color wheel.



124.5170, -10.6079, 42.5196



118.9680, -21.6762, -0.8489



98.8250, 21.7783, -78.7765



124.2270, 22.5661, -4.5841

Rectangle

The Rectangle color scheme consists of four colors that form a rectangle on the color wheel.



124.5170, -10.6079, 42.5196



122.4490, -24.3784, 25.9162



98.8250, 21.7783, -78.7765



113.2710, 28.9534, -46.7187

Sweetspot

The Sweet Spot groups the original color and five complimentary colors.



124.5170, -10.6079, 42.5196



205.6600, -4.2694, 16.0842



131.9100, 20.2574, 36.0359



101.3710, -2.6479, 9.3216



240.0000, 0.0000, 0.0000



112.0000, 0.0000, 0.0000

Same Dimension

The Same Dimension uses a secret algorithm to generate beautiful new colors.



124.5170, -10.6079, 42.5196



148.0640, -16.7936, 66.5959



144.4750, -20.4472, 25.0164



80.6910, -1.3267, 5.5330



46.0240, -22.6898, 91.1870



6.8770, -3.3904, 14.1399

Inverse Universe

The Inverse Universe completely reimagines the original color for something new.



151.4830, 10.6079, -42.5196



190.5230, 16.5042, -67.1107



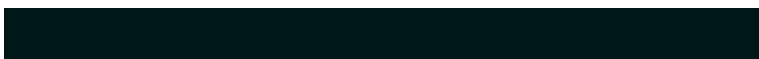
131.5250, 20.4472, -25.0164



84.3090, 1.3267, -5.5330



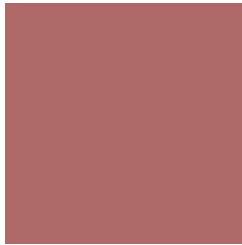
103.9760, 22.6898, -91.1870



16.1230, 3.3904, -14.1399

Previews

White Background



This preview shows how the YUV color 124.5170, -10.6079, 42.5196 looks on a white background.

Color Contrast Check

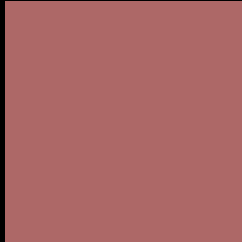
Large Text (above 18pt) WCAG AA ✓ Pass

Any Text WCAG AA × Fail

Large Text (above 18pt) WCAG AAA × Fail

Any Text WCAG AAA × Fail

Black Background



This preview shows how the YUV color 124.5170, -10.6079, 42.5196 looks on a black background.

Color Contrast Check

Large Text (above 18pt) WCAG AA ✓ Pass

Any Text WCAG AA ✓ Pass

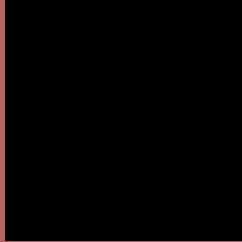
Large Text (above 18pt) WCAG AAA ✓ Pass

Any Text WCAG AAA × Fail

If you want to check with other color combinations, try the [Color Contrast Checker](#).

YUV 124.5170, -10.6079, 42.5196

Background



This preview shows how black text looks on a background with the YUV color 124.5170, -10.6079, 42.5196.



This preview shows how white text looks on a background with the YUV color 124.5170, -10.6079, 42.5196.

Color Blindness Simulation

Color vision deficiency is a very complex topic, and I could not describe the different causes any better than Wikipedia does, so if you want to learn more, you should check out their [article about color blindness](#).

Dichromacy



Original Color

124.5170, -10.6079, 42.5196

Protanopia

123.3550, -5.1050, 4.0737

Deuteranopia

124.0100, -11.8369, 16.6542



Tritanopia

125.0270, -7.4083, 42.9493

Trichromacy



Original Color

124.5170, -10.6079, 42.5196

Protanomaly

123.5740, -7.1850, 17.9136

Deuteranomaly

124.4780, -11.5747, 25.8908

Tritanomaly

124.6850, -8.7187, 43.2493

Monochromacy



Original Color

124.5170, -10.6079, 42.5196

Achromatopsia

125.0000, 0.0000, 0.0000

Achromatomaly

124.4750, -3.6852, 15.3694

CSS Examples

Text

The CSS property to change the color of the text to YUV 124.5170, -10.6079, 42.5196 is called "color". The color property can be set on classes, ids or directly on the HTML element.

This example shows how text in the color `rgb(173, 104, 103)` looks like.

```
.text, #text, p{  
    color:rgb(173, 104, 103)  
}
```

If you want to add a text shadow in that color use the text-shadow property, you can generate a text shadow directly with our [CSS Text Shadow Generator](#).

Here you see how black text with a 4 pixel rgb(173, 104, 103) colored shadow looks like.

```
.shadow{ text-shadow: 4px 4px 2px rgb(173, 104, 103) }
```

Border

The CSS property to change the border of an element to YUV 124.5170, -10.6079, 42.5196 is called "border".

The border property can be set on classes, ids or directly on the HTML element.

This example shows the color as border, it can be applied via the CSS property "border" or "border-color".

```
.border, #border, table{ border:4px solid rgb(173, 104, 103) }
```


If only the border color should be changed use the property `border-color`.

```
.border{ border-color:rgb(173, 104, 103) }
```

If you want to add a box shadow in that color use:

Here you see how a box with a 4 pixel `rgb(173, 104, 103)` colored shadow looks like.

```
.boxshadow{ -moz-box-shadow:4px 4px 4px  
4px rgb(173, 104, 103); -webkit-box-  
shadow:4px 4px 4px 4px rgb(173, 104, 103);  
box-shadow:4px 4px 4px 4px rgb(173, 104,  
103) }
```

Background

The CSS property to change the background color of an element to YUV 124.5170, -10.6079, 42.5196 is called "background". The background property can be set on classes, ids or directly on the HTML element.

```
.background, #background, body{  
background: rgb(173, 104, 103) }
```

If only the background color should be changed can be used:

```
.background{ background-color: rgb(173,  
104, 103) }
```

This example shows the color as background, it is applied via the CSS property "background".

To optimize and compress your CSS code, you can use our [online CSS compressor and optimizer](#) based on csstidy. If you want to create a linear or radial gradient as background or border, check our [CSS Gradient Generator](#).

Hey! You found this booklet interesting? Support Converting Colors with the new Membership Option!

The pro membership hides all ads, plus gives you double the colors in the color bucket, and more awesome pro features!

[Learn more, Memberships starting at \\$2.50/m!](#)

**Follow me
on Twitter!**

@ConvertingColor