

Converting Colors

YUV(124.9600, -5.4033,
100.0131)

Have a look what the booklet for
YUV(124.9600, -5.4033, 100.0131)
contains.

YUV(124.9600, -5.4033, 100.0131)	3
<i>Conversions</i>	4
<i>Details</i>	6
<i>Harmonies</i>	12
<i>Previews</i>	24
<i>Color Blindness Simulation</i>	28
<i>CSS Examples</i>	31

Color

**YUV(124.9600, -5.4033,
100.0131)**

Conversions

Conversions Part 1

Format	Color
Hex	EF4572
RGB	239, 69, 114
RGB Percent	94%, 27%, 45%
CMY	0.0627, 0.7294, 0.5529
CMYK	0.00, 0.71, 0.52, 0.06
HSL	344°, 84%, 60%
HSV	344°, 71%, 94%
XYZ	40.7620, 23.8219, 18.3693
YIQ	124.9600, 86.8750, 50.0350

Conversions

Conversions Part 2

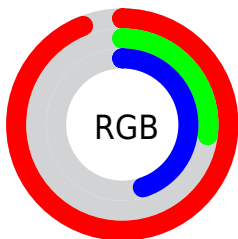
Format	Color
RYB	239, 69, 114
Decimal	15680882
CIELab	55.91, 67.11, 13.47
CIELCh	56, 68.445, 11.350
Yxy	23.8219, 0.4914, 0.2872
Android (android.graphics.Color)	4293870962 (0xFFEF4572)
YUV	124.9600, -5.4033, 100.0131
Hunter-Lab	48.8077, 63.6619, 11.8509

Details

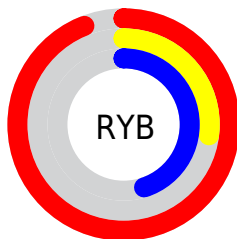
The YUV color **124.9600, -5.4033, 100.0131** is a dark color, and the websafe version is hex **CC3366**. The color can be described as middle muted rose. A complement of this color would be **183.0400, 5.4033, -100.0131**, and the grayscale version is **125.0000, 0.0000, 0.0000**.

A 20% lighter version of the original color is **170.8920, -2.4118, 73.7627**, and **60.5610, 3.1744, 102.1170** is the 20% darker color. If you saturate the color by 10%, you get **108.8200, -6.3203, 114.1679**, and if you desaturate by 10%, it is **141.1000, -4.4863, 85.8583**.

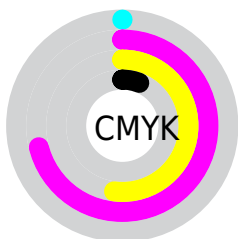
Distribution



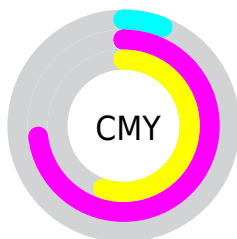
- Red (94%)
- Green (27%)
- Blue (45%)



- Red (94%)
- Yellow (27%)
- Blue (45%)



- Cyan (0%)
- Magenta (71%)
- Yellow (52%)
- Black (6%)



- Cyan (6%)
- Magenta (73%)
- Yellow (55%)

Brightness & Saturation Gradients

These gradients show how the YUV color 124.9600, -5.4033, 100.0131 changes by changing the brightness by 10 percent. The first figure shows a shift by +10% for each color and the second figure -10%.

Similar to the brightness gradients but the following saturation gradients show a change of the YUV color 124.9600, -5.4033, 100.0131 by changing the saturation by 10% instead.

■ 124.9600, -5.4033,
100.0131

■ 124.9600, -5.4033,
100.0131

■ 255.0000, 0.0000,
0.0000

■ 91.8230, -0.8987,
101.8872

■ 170.8920, -2.4118,
73.7627

■ 60.5610, 3.1744,
102.1170

■ 190.4060, 1.2788,
56.6489

■ 48.7840, -1.8655,
85.2584

■ 211.0940, 4.3907,
38.5056

■ 37.5340, -6.1793,
68.8147

■ 231.4230, 8.6655,
20.6770

■ 25.8280, -12.2402,
52.7708

■ 249.7170, 2.6045,
4.6332

■ 17.2710, -7.5286,
34.8423

■ 4.7840, -2.3585,

9.8364

■ 0.0000, 0.0000,
0.0000

■ 124.9600, -5.4033,
100.0131

■ 124.9600, -5.4033,
100.0131

■ 108.8200, -6.3203,
114.1679

■ 141.1000, -4.4863,
85.8583

■ 92.7940, -6.8004,
128.2227

■ 157.1260, -4.0061,
71.8035

■ 78.6430, -7.7120,
140.6331

■ 173.2660, -3.0891,
57.6487

■ 189.2920, -2.6090,
43.5939

■ 204.8450, -1.4026,
29.9539

220.8710, -0.9224,
15.8991

237.0110, -0.0054,
1.7444

250.2160, 2.3585,
-9.8364

Harmonies

Analogous

The Analogous color harmony consists of three colors that are next to each other on the color wheel.



131.5870, 20.4166, 78.4152



124.9600, -5.4033, 100.0131



127.0160, -34.0249, 86.8090

Triad

The Triadic color harmony groups three colors that are evenly spaced from another and form a triangle on the color wheel.



124.9600, -5.4033, 100.0131



114.4000, -40.6232, -37.1848



116.7950, 64.1911, -102.4292

Complementary

The Complementary color scheme is a pair of colors which are on the opposite of each other on the color wheel.



124.9600, -5.4033, 100.0131



183.0400, 5.4033, -100.0131

Split Complementary

Split-complementary colors differ from the complementary color scheme. The scheme consists of three colors, the original color and two neighbors of the complement color.



117.5010, 46.5880, -103.0484



124.9600, -5.4033, 100.0131



104.0490, -4.9542, -91.2510

Square

The Square scheme is like the rectangle color scheme, but the four colors are evenly spaced on the color wheel.



124.9600, -5.4033, 100.0131



122.8660, -60.5729, 15.0265



112.2910, 21.5485, -98.4792



107.3860, 71.2947, -94.1775

Rectangle

The Rectangle color scheme consists of four colors that form a rectangle on the color wheel.



124.9600, -5.4033, 100.0131



127.3300, -53.8997, 68.1166



112.2910, 21.5485, -98.4792



117.5300, 59.3917, -103.0738

Sweetspot

The Sweet Spot groups the original color and five complimentary colors.



124.9600, -5.4033, 100.0131



218.8560, -1.4080, 31.6983



125.7550, 55.8298, 59.8509



106.4800, -1.2226, 18.8730



0.0000, 0.0000, 0.0000



128.0000, 0.0000, 0.0000

Same Dimension

The Same Dimension uses a secret algorithm to generate beautiful new colors.



124.9600, -5.4033, 100.0131



109.4950, -6.6530, 127.6079



143.3100, -36.6348, 83.9201



111.9300, -0.4585, 7.0774



60.6020, -5.7198, 108.2200



18.4540, -1.7028, 32.9278

Inverse Universe

The Inverse Universe completely reimagines the original color for something new.



124.9600, -5.4033, 100.0131



109.4950, -6.6530, 127.6079



164.6900, 36.6348, -83.9201



111.9300, -0.4585, 7.0774



60.6020, -5.7198, 108.2200



18.4540, -1.7028, 32.9278

Previews

White Background



This preview shows how the YUV color 124.9600, -5.4033, 100.0131 looks on a white background.

Color Contrast Check

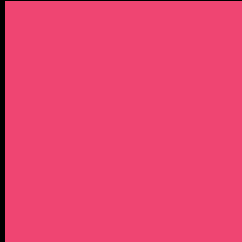
Large Text (above 18pt) WCAG AA ✓ Pass

Any Text WCAG AA × Fail

Large Text (above 18pt) WCAG AAA × Fail

Any Text WCAG AAA × Fail

Black Background



This preview shows how the YUV color 124.9600, -5.4033, 100.0131 looks on a black background.

Color Contrast Check

Large Text (above 18pt) WCAG AA ✓ Pass

Any Text WCAG AA ✓ Pass

Large Text (above 18pt) WCAG AAA ✓ Pass

Any Text WCAG AAA × Fail

If you want to check with other color combinations, try the [Color Contrast Checker](#).

YUV 124.9600, -5.4033, 100.0131

Background



This preview shows how black text looks on a background with the YUV color 124.9600, -5.4033, 100.0131.



This preview shows how white text looks on a background with the YUV color 124.9600, -5.4033,

Color Blindness Simulation

Color vision deficiency is a very complex topic, and I could not describe the different causes any better than Wikipedia does, so if you want to learn more, you should check out their [article about color blindness](#).

Dichromacy



Original Color

124.9600, -5.4033, 100.0131

Protanopia

134.7100, 6.5520, -1.4997

Deuteranopia

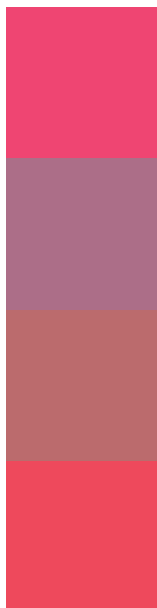
134.7500, -14.1738, 19.5132



Tritanopia

124.5950, -21.9853, 98.5792

Trichromacy



Original Color

124.9600, -5.4033, 100.0131

Protanomaly

131.5020, 2.2175, 35.5167

Deuteranomaly

131.1480, -10.9190, 48.9822

Tritanomaly

124.5010, -16.0230, 99.5386

Monochromacy



Original Color

124.9600, -5.4033, 100.0131

Achromatopsia

125.0000, 0.0000, 0.0000

Achromatomaly

125.0630, -2.0031, 35.9017

CSS Examples

Text

The CSS property to change the color of the text to YUV 124.9600, -5.4033, 100.0131 is called "color". The color property can be set on classes, ids or directly on the HTML element.

This example shows how text in the color `rgb(239, 69, 114)` looks like.

```
.text, #text, p{  
  color:rgb(239, 69, 114)  
}
```

If you want to add a text shadow in that color use the text-shadow property, you can generate a text shadow directly with our [CSS Text Shadow Generator](#).

Here you see how black text with a 4 pixel rgb(239, 69, 114) colored shadow looks like.

```
.shadow{ text-shadow: 4px 4px 2px rgb(239, 69, 114) }
```

Border

The CSS property to change the border of an element to YUV 124.9600, -5.4033, 100.0131 is called "border".

The border property can be set on classes, ids or directly on the HTML element.

This example shows the color as border, it can be applied via the CSS property "border" or "border-color".

```
.border, #border, table{ border:4px solid rgb(239, 69, 114) }
```


If only the border color should be changed use the property border-color.

```
.border{ border-color:rgb(239, 69, 114) }
```

If you want to add a box shadow in that color use:

Here you see how a box with a 4 pixel rgb(239, 69, 114) colored shadow looks like.

```
.boxshadow{ -moz-box-shadow:4px 4px 4px  
4px rgb(239, 69, 114); -webkit-box-  
shadow:4px 4px 4px 4px rgb(239, 69, 114);  
box-shadow:4px 4px 4px 4px rgb(239, 69,  
114) }
```

Background

The CSS property to change the background color of an element to YUV 124.9600, -5.4033, 100.0131 is called "background". The background property can be set on classes, ids or directly on the HTML element.

```
.background, #background, body{  
background: rgb(239, 69, 114) }
```

If only the background color should be changed can be used:

```
.background{ background-color: rgb(239, 69,  
114) }
```

This example shows the color as background, it is applied via the CSS property "background".

To optimize and compress your CSS code, you can use our [online CSS compressor and optimizer](#) based on csstidy. If you want to create a linear or radial gradient as background or border, check our [CSS Gradient Generator](#).

Hey! You found this booklet interesting? Support Converting Colors with the new Membership Option!

The pro membership hides all ads, plus gives you double the colors in the color bucket, and more awesome pro features!

[Learn more, Memberships starting at \\$2.50/m!](#)

**Follow me
on Twitter!**

@ConvertingColor