

Converting Colors

YUV(125.3800, -13.0053,
18.0837)

Have a look what the booklet for
YUV(125.3800, -13.0053, 18.0837)
contains.

YUV(125.3800, -13.0053, 18.0837)	3
<i>Conversions</i>	4
<i>Details</i>	6
<i>Harmonies</i>	12
<i>Previews</i>	24
<i>Color Blindness Simulation</i>	28
<i>CSS Examples</i>	31

Color

**YUV(125.3800, -13.0053,
18.0837)**

Conversions

Conversions Part 1

Format	Color
Hex	927863
RGB	146, 120, 99
RGB Percent	57%, 47%, 39%
CMY	0.4275, 0.5294, 0.6118
CMYK	0.00, 0.18, 0.32, 0.43
HSL	27°, 19%, 48%
HSV	27°, 32%, 57%
XYZ	20.8227, 20.4448, 14.6531
YIQ	125.3800, 22.2370, -1.0190

Conversions

Conversions Part 2

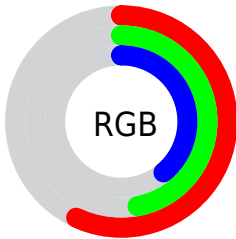
Format	Color
R_{YB}	146, 137, 99
Decimal	9599075
CIE _{Lab}	52.34, 6.86, 15.33
CIE _{LCh}	52, 16.797, 65.878
Yxy	20.4448, 0.3724, 0.3656
Android (android.graphics.Color)	4287789155 (0xFF927863)
YUV	125.3800, -13.0053, 18.0837
Hunter-Lab	45.2159, 3.0743, 12.4370

Details

The YUV color **125.3800, -13.0053, 18.0837** is a dark color, and the websafe version is hex **996666**. A complement of this color would be **119.6200, 13.0053, -18.0837**, and the grayscale version is **125.0000, 0.0000, 0.0000**.

A 20% lighter version of the original color is **178.1630, -13.8844, 20.0280**, and **76.2980, -11.9789, 15.5247** is the 20% darker color. If you saturate the color by 10%, you get **118.9740, -17.2422, 23.7018**, and if you desaturate by 10%, it is **131.7860, -8.7685, 12.4657**.

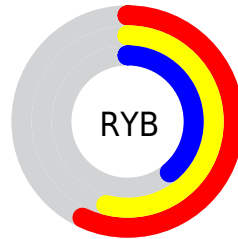
Distribution



Red (57%)

Green (47%)

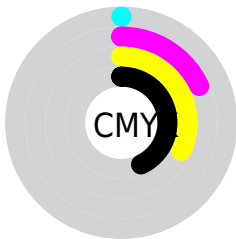
Blue (39%)



Red (57%)

Yellow (54%)

Blue (39%)

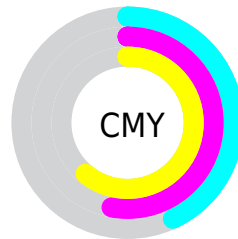


Cyan (0%)

Magenta (18%)

Yellow (32%)

Black (43%)



Cyan (43%)

Magenta (53%)

Yellow (61%)

Brightness & Saturation Gradients

These gradients show how the YUV color 125.3800, -13.0053, 18.0837 changes by changing the brightness by 10 percent. The first figure shows a shift by +10% for each color and the second figure -10%.

Similar to the brightness gradients but the following saturation gradients show a change of the YUV color 125.3800, -13.0053, 18.0837 by changing the saturation by 10% instead.

■ 125.3800,
-13.0053, 18.0837

■ 125.3800,
-13.0053, 18.0837

■ 255.0000, 0.0000,
0.0000

■ 100.1950,
-12.4211, 17.3690

■ 178.1630,
-13.8844, 20.0280

■ 76.2980, -11.9789,
15.5247

■ 206.0490,
-14.3212, 20.1280

■ 53.2270, -10.9579,
14.7099

■ 233.3370,
-14.4631, 18.9985

■ 31.4010, -11.5367,
13.6803

■ 252.3780,
-10.0464, 2.2995

■ 8.9370, -4.4059,
13.2103

■ 0.0000, 0.0000,
0.0000

■ 125.3800,
-13.0053, 18.0837

■ 125.3800,
-13.0053, 18.0837

■ 118.9740,
-17.2422, 23.7018

■ 131.7860, -8.7685,
12.4657

■ 112.6820,
-21.0422, 29.2199

■ 138.0780, -4.9685,
6.9476

■ 106.2760,
-25.2791, 34.8379

■ 144.4840, -0.7316,
1.3295

■ 99.9840, -29.0791,
40.3560

■ 150.7760, 3.0684,
-4.1886

■ 93.5780, -33.3160,
45.9741

■ 157.1820, 7.3053,
-9.8066

■ 87.1720, -37.5528,
51.5922

■ 163.5880, 11.5421,
-15.4247

■ 81.8090, -40.3318,
56.2955

■ 170.4670, 15.0528,
-21.4576

■ 176.8730, 19.2896,

-27.0756

■ 183.1650, 23.0897,
-32.5937

Harmonies

Analogous

The Analogous color harmony consists of three colors that are next to each other on the color wheel.



126.5640, -8.6591, 24.0614



125.3800, -13.0053, 18.0837



124.0860, -13.8464, 7.8176

Triad

The Triadic color harmony groups three colors that are evenly spaced from another and form a triangle on the color wheel.



125.3800, -13.0053, 18.0837



118.8610, 4.0125, -27.0651



126.4810, 10.6089, 3.9632

Complementary

The Complementary color scheme is a pair of colors which are on the opposite of each other on the color wheel.



125.3800, -13.0053, 18.0837



119.6200, 13.0053, -18.0837

Split Complementary

Split-complementary colors differ from the complementary color scheme. The scheme consists of three colors, the original color and two neighbors of the complement color.



124.3050, 14.1466, -10.7915



125.3800, -13.0053, 18.0837



118.9730, 10.8593, -29.7943

Square

The Square scheme is like the rectangle color scheme, but the four colors are evenly spaced on the color wheel.



125.3800, -13.0053, 18.0837



120.5650, -3.7295, -17.1585



121.6300, 14.4794, -24.2315



127.3640, 4.7505, 16.3438

Rectangle

The Rectangle color scheme consists of four colors that form a rectangle on the color wheel.



125.3800, -13.0053, 18.0837



122.9000, -11.7827, -0.7893



121.6300, 14.4794, -24.2315



126.2030, 12.2249, -1.0550

Sweetspot

The Sweet Spot groups the original color and five complimentary colors.



125.3800, -13.0053, 18.0837



180.3770, -5.1159, 7.5624



116.1310, 4.8654, 26.1951



89.2240, -3.0684, 4.1886



222.0000, 0.0000, 0.0000



94.0000, 0.0000, 0.0000

Same Dimension

The Same Dimension uses a secret algorithm to generate beautiful new colors.



125.3800, -13.0053, 18.0837



156.4970, -20.4580, 28.5051



138.8810, -19.6613, 6.2434



70.8540, -1.9000, 2.7590



77.6560, -38.2844, 52.9217



5.9250, -2.9210, 3.5738

Inverse Universe

The Inverse Universe completely reimagines the original color for something new.



119.6200, 13.0053, -18.0837



147.5030, 20.4580, -28.5051



106.1190, 19.6613, -6.2434



70.1460, 1.9000, -2.7590



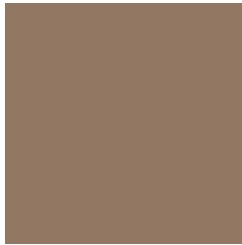
60.3440, 38.2844, -52.9217



4.6620, 2.6316, -4.0886

Previews

White Background



This preview shows how the YUV color 125.3800, -13.0053, 18.0837 looks on a white background.

Color Contrast Check

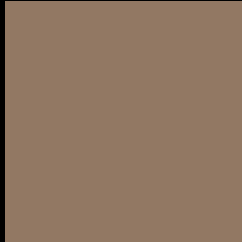
Large Text (above 18pt) WCAG AA ✓ Pass

Any Text WCAG AA × Fail

Large Text (above 18pt) WCAG AAA × Fail

Any Text WCAG AAA × Fail

Black Background



This preview shows how the YUV color 125.3800, -13.0053, 18.0837 looks on a black background.

Color Contrast Check

Large Text (above 18pt) WCAG AA ✓ Pass

Any Text WCAG AA ✓ Pass

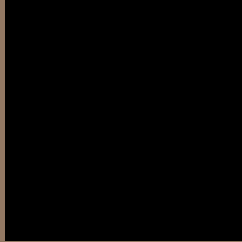
Large Text (above 18pt) WCAG AAA ✓ Pass

Any Text WCAG AAA × Fail

If you want to check with other color combinations, try the [Color Contrast Checker](#).

YUV 125.3800, -13.0053, 18.0837

Background



This preview shows how black text looks on a background with the YUV color 125.3800, -13.0053, 18.0837.



This preview shows how white text looks on a background with the YUV color 125.3800, -13.0053, 18.0837.

Color Blindness Simulation

Color vision deficiency is a very complex topic, and I could not describe the different causes any better than Wikipedia does, so if you want to learn more, you should check out their [article about color blindness](#).

Dichromacy



Original Color

125.3800, -13.0053, 18.0837

Protanopia

124.6560, -11.6624, 7.3177

Deuteranopia

125.3800, -13.0053, 18.0837



Tritanopia

126.8930, -0.9332, 19.3878

Trichromacy



Original Color

125.3800, -13.0053, 18.0837

Protanomaly

124.8630, -12.2575, 11.5211

Deuteranomaly

125.3800, -13.0053, 18.0837

Tritanomaly

126.1550, -5.0064, 19.1581

Monochromacy



Original Color

125.3800, -13.0053, 18.0837

Achromatopsia

125.0000, 0.0000, 0.0000

Achromatomaly

125.1920, -4.5317, 6.8476

CSS Examples

Text

The CSS property to change the color of the text to YUV 125.3800, -13.0053, 18.0837 is called "color". The color property can be set on classes, ids or directly on the HTML element.

This example shows how text in the color `rgb(146, 120, 99)` looks like.

```
.text, #text, p{  
    color:rgb(146, 120, 99)  
}
```

If you want to add a text shadow in that color use the text-shadow property, you can generate a text shadow directly with our [CSS Text Shadow Generator](#).

Here you see how black text with a 4 pixel rgb(146, 120, 99) colored shadow looks like.

```
.shadow{ text-shadow: 4px 4px 2px rgb(146, 120, 99) }
```

Border

The CSS property to change the border of an element to YUV 125.3800, -13.0053, 18.0837 is called "border".

The border property can be set on classes, ids or directly on the HTML element.

This example shows the color as border, it can be applied via the CSS property "border" or "border-color".

```
.border, #border, table{ border:4px solid rgb(146, 120, 99) }
```


If only the border color should be changed use the property `border-color`.

```
.border{ border-color:rgb(146, 120, 99) }
```

If you want to add a box shadow in that color use:

Here you see how a box with a 4 pixel `rgb(146, 120, 99)` colored shadow looks like.

```
.boxshadow{ -moz-box-shadow:4px 4px 4px  
4px rgb(146, 120, 99); -webkit-box-  
shadow:4px 4px 4px 4px rgb(146, 120, 99);  
box-shadow:4px 4px 4px 4px rgb(146, 120,  
99) }
```

Background

The CSS property to change the background color of an element to YUV 125.3800, -13.0053, 18.0837 is called "background". The background property can be set on classes, ids or directly on the HTML element.

```
.background, #background, body{  
background: rgb(146, 120, 99) }
```

If only the background color should be changed can be used:

```
.background{ background-color: rgb(146,  
120, 99) }
```

This example shows the color as background, it is applied via the CSS property "background".

To optimize and compress your CSS code, you can use our [online CSS compressor and optimizer](#) based on csstidy. If you want to create a linear or radial gradient as background or border, check our [CSS Gradient Generator](#).

Hey! You found this booklet interesting? Support Converting Colors with the new Membership Option!

The pro membership hides all ads, plus gives you double the colors in the color bucket, and more awesome pro features!

[Learn more, Memberships starting at \\$2.50/m!](#)

**Follow me
on Twitter!**

@ConvertingColor