

Converting Colors

YUV(125.6260, -16.0846,
25.7610)

Have a look what the booklet for
YUV(125.6260, -16.0846, 25.7610)
contains.

YUV(125.6260, -16.0846, 25.7610)	3
<i>Conversions</i>	4
<i>Details</i>	6
<i>Harmonies</i>	12
<i>Previews</i>	24
<i>Color Blindness Simulation</i>	28
<i>CSS Examples</i>	31

Color

**YUV(125.6260, -16.0846,
25.7610)**

Conversions

Conversions Part 1

Format	Color
Hex	9B755D
RGB	155, 117, 93
RGB Percent	61%, 46%, 36%
CMY	0.3922, 0.5412, 0.6353
CMYK	0.00, 0.25, 0.40, 0.39
HSL	23°, 25%, 49%
HSV	23°, 40%, 61%
XYZ	21.8546, 20.4815, 13.1574
YIQ	125.6260, 30.3520, 0.5920

Conversions

Conversions Part 2

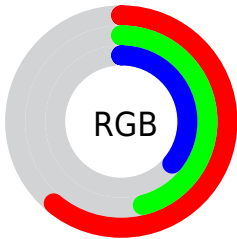
Format	Color
R_{YB}	155, 132, 93
Decimal	10188125
CIE _{Lab}	52.38, 11.59, 19.01
CIE _{LCh}	52, 22.267, 58.640
Yxy	20.4815, 0.3938, 0.3691
Android (android.graphics.Color)	4288378205 (0xFF9B755D)
YUV	125.6260, -16.0846, 25.7610
Hunter-Lab	45.2564, 7.0001, 14.4422

Details

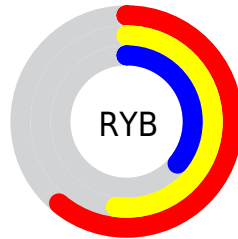
The YUV color **125.6260, -16.0846, 25.7610** is a dark color, and the websafe version is hex **996666**. A complement of this color would be **122.3740, 16.0846, -25.7610**, and the grayscale version is **126.0000, 0.0000, 0.0000**.

A 20% lighter version of the original color is **178.5940, -17.5478, 28.4201**, and **76.3590, -14.4740, 22.4872** is the 20% darker color. If you saturate the color by 10%, you get **118.6330, -20.0321, 31.8939**, and if you desaturate by 10%, it is **132.6190, -12.1372, 19.6281**.

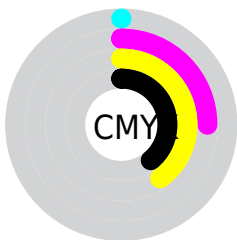
Distribution



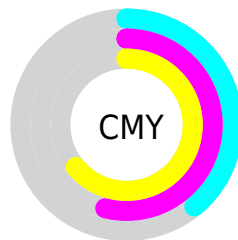
- Red (61%)
- Green (46%)
- Blue (36%)



- Red (61%)
- Yellow (52%)
- Blue (36%)



- Cyan (0%)
- Magenta (25%)
- Yellow (40%)
- Black (39%)



- Cyan (39%)
- Magenta (54%)
- Yellow (64%)

Brightness & Saturation Gradients

These gradients show how the YUV color 125.6260, -16.0846, 25.7610 changes by changing the brightness by 10 percent. The first figure shows a shift by +10% for each color and the second figure -10%.

Similar to the brightness gradients but the following saturation gradients show a change of the YUV color 125.6260, -16.0846, 25.7610 by changing the saturation by 10% instead.

■ 125.6260,
-16.0846, 25.7610

■ 125.6260,
-16.0846, 25.7610

■ 255.0000, 0.0000,
0.0000

■ 100.1420,
-15.3530, 24.4315

■ 178.5940,
-17.5478, 28.4201

■ 76.3590, -14.4740,
22.4872

■ 206.1920,
-17.8427, 29.6496

■ 52.9890, -13.3056,
21.0576

■ 230.1910,
-16.3632, 21.7575

■ 30.5220, -15.0473,
19.7132

■ 250.4060,
-12.5252, 4.0289

■ 8.9700, -4.4222,
18.4433

■ 254.8860, -0.4368,
0.1000

■ 0.0000, 0.0000,
0.0000

■ 125.6260,
-16.0846, 25.7610

■ 125.6260,
-16.0846, 25.7610

■ 118.6330,
-20.0321, 31.8939

■ 132.6190,
-12.1372, 19.6281

■ 110.9390,
-24.1269, 38.6415

■ 140.3130, -8.0423,
12.8805

■ 103.9460,
-28.0744, 44.7744

■ 147.8930, -4.3842,
6.2328

■ 96.2520, -32.1692,
51.5220

■ 155.0000, 0.0000,
0.0000

■ 89.1450, -36.5535,
57.7548

■ 162.1070, 4.3842,
-6.2328

■ 81.5650, -40.2115,
64.4025

■ 169.6870, 8.0423,
-12.8805

■ 176.7940, 12.4266,
-19.1133

■ 184.3740, 16.0846,

-25.7610

■ 191.9540, 19.7427,
-32.4087

Harmonies

Analogous

The Analogous color harmony consists of three colors that are next to each other on the color wheel.



126.7930, -9.2649, 31.7535



125.6260, -16.0846, 25.7610



123.6800, -18.0832, 13.4356

Triad

The Triadic color harmony groups three colors that are evenly spaced from another and form a triangle on the color wheel.



125.6260, -16.0846, 25.7610



116.8770, 3.0186, -34.9721



126.4250, 15.5665, 0.5043

Complementary

The Complementary color scheme is a pair of colors which are on the opposite of each other on the color wheel.



125.6260, -16.0846, 25.7610



122.3740, 16.0846, -25.7610

Split Complementary

Split-complementary colors differ from the complementary color scheme. The scheme consists of three colors, the original color and two neighbors of the complement color.



122.7320, 19.8521, -20.8130



125.6260, -16.0846, 25.7610



115.2810, 13.6655, -43.2194

Square

The Square scheme is like the rectangle color scheme, but the four colors are evenly spaced on the color wheel.



125.6260, -16.0846, 25.7610



119.6310, -7.2131, -19.8474



117.8070, 19.3221, -37.5417



127.9990, 8.3815, 18.4179

Rectangle

The Rectangle color scheme consists of four colors that form a rectangle on the color wheel.



125.6260, -16.0846, 25.7610



122.3690, -16.4509, 3.1844



117.8070, 19.3221, -37.5417



125.8370, 17.3354, -6.8730

Sweetspot

The Sweet Spot groups the original color and five complimentary colors.



125.6260, -16.0846, 25.7610



190.0460, -6.4317, 9.6067



115.8700, 7.4591, 34.3170



95.1210, -3.5107, 6.0329



230.0000, 0.0000, 0.0000



102.0000, 0.0000, 0.0000

Same Dimension

The Same Dimension uses a secret algorithm to generate beautiful new colors.



125.6260, -16.0846, 25.7610



155.4230, -24.8585, 39.9710



143.8230, -25.0557, 9.8022



73.1530, -2.0474, 3.3738



73.5580, -36.2641, 58.2696



6.8220, -3.3632, 5.4181

Inverse Universe

The Inverse Universe completely reimagines the original color for something new.



122.3740, 16.0846, -25.7610



150.5770, 24.8585, -39.9710



104.1770, 25.0557, -9.8022



72.8470, 2.0474, -3.3738



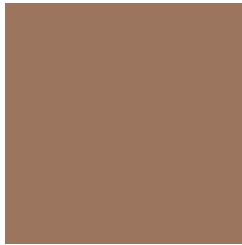
66.4420, 36.2641, -58.2696



6.1780, 3.3632, -5.4181

Previews

White Background



This preview shows how the YUV color 125.6260, -16.0846, 25.7610 looks on a white background.

Color Contrast Check

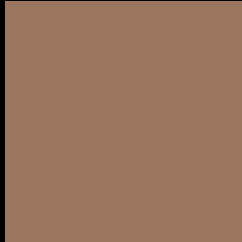
Large Text (above 18pt) WCAG AA ✓ Pass

Any Text WCAG AA × Fail

Large Text (above 18pt) WCAG AAA × Fail

Any Text WCAG AAA × Fail

Black Background



This preview shows how the YUV color 125.6260, -16.0846, 25.7610 looks on a black background.

Color Contrast Check

Large Text (above 18pt) WCAG AA ✓ Pass

Any Text WCAG AA ✓ Pass

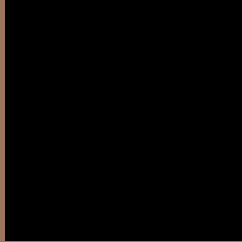
Large Text (above 18pt) WCAG AAA ✓ Pass

Any Text WCAG AAA × Fail

If you want to check with other color combinations, try the [Color Contrast Checker](#).

YUV 125.6260, -16.0846, 25.7610

Background



This preview shows how black text looks on a background with the YUV color 125.6260, -16.0846, 25.7610.



This preview shows how white text looks on a background with the YUV color 125.6260, -16.0846, 25.7610.

25.7610.

Color Blindness Simulation

Color vision deficiency is a very complex topic, and I could not describe the different causes any better than Wikipedia does, so if you want to learn more, you should check out their [article about color blindness](#).

Dichromacy



Original Color

125.6260, -16.0846, 25.7610

Protanopia

124.4990, -13.5570, 8.3324

Deuteranopia

125.1800, -16.3577, 20.0131



Tritanopia

127.4810, -2.7021, 26.7652

Trichromacy



Original Color

125.6260, -16.0846, 25.7610

Protanomaly

125.0160, -14.3049, 14.8950

Deuteranomaly

125.4900, -16.5106, 22.3723

Tritanomaly

126.5150, -7.6489, 26.7353

Monochromacy



Original Color

125.6260, -16.0846, 25.7610

Achromatopsia

126.0000, 0.0000, 0.0000

Achromatomaly

126.1600, -5.9949, 9.5067

CSS Examples

Text

The CSS property to change the color of the text to YUV 125.6260, -16.0846, 25.7610 is called "color". The color property can be set on classes, ids or directly on the HTML element.

This example shows how text in the color `rgb(155, 117, 93)` looks like.

```
.text, #text, p{  
    color:rgb(155, 117, 93)  
}
```

If you want to add a text shadow in that color use the text-shadow property, you can generate a text shadow directly with our [CSS Text Shadow Generator](#).

Here you see how black text with a 4 pixel rgb(155, 117, 93) colored shadow looks like.

```
.shadow{ text-shadow: 4px 4px 2px rgb(155, 117, 93) }
```

Border

The CSS property to change the border of an element to YUV 125.6260, -16.0846, 25.7610 is called "border".

The border property can be set on classes, ids or directly on the HTML element.

This example shows the color as border, it can be applied via the CSS property "border" or "border-color".

```
.border, #border, table{ border:4px solid rgb(155, 117, 93) }
```


If only the border color should be changed use the property border-color.

```
.border{ border-color:rgb(155, 117, 93) }
```

If you want to add a box shadow in that color use:

Here you see how a box with a 4 pixel rgb(155, 117, 93) colored shadow looks like.

```
.boxshadow{ -moz-box-shadow:4px 4px 4px  
4px rgb(155, 117, 93); -webkit-box-  
shadow:4px 4px 4px 4px rgb(155, 117, 93);  
box-shadow:4px 4px 4px 4px rgb(155, 117,  
93) }
```

Background

The CSS property to change the background color of an element to YUV 125.6260, -16.0846, 25.7610 is called "background". The background property can be set on classes, ids or directly on the HTML element.

```
.background, #background, body{  
background: rgb(155, 117, 93) }
```

If only the background color should be changed can be used:

```
.background{ background-color: rgb(155,  
117, 93) }
```

This example shows the color as background, it is applied via the CSS property "background".

To optimize and compress your CSS code, you can use our [online CSS compressor and optimizer](#) based on csstidy. If you want to create a linear or radial gradient as background or border, check our [CSS Gradient Generator](#).

Hey! You found this booklet interesting? Support Converting Colors with the new Membership Option!

The pro membership hides all ads, plus gives you double the colors in the color bucket, and more awesome pro features!

[Learn more, Memberships starting at \\$2.50/m!](#)

**Follow me
on Twitter!**

@ConvertingColor