

Converting Colors

YUV(126.0710, -14.3320,
23.6167)

Have a look what the booklet for
YUV(126.0710, -14.3320, 23.6167)
contains.

| | |
|--|----|
| YUV(126.0710, -14.3320, 23.6167) | 3 |
| <i>Conversions</i> | 4 |
| <i>Details</i> | 6 |
| <i>Harmonies</i> | 12 |
| <i>Previews</i> | 24 |
| <i>Color Blindness Simulation</i> | 28 |
| <i>CSS Examples</i> | 31 |

Color

**YUV(126.0710, -14.3320,
23.6167)**

Conversions

Conversions Part 1

| Format | Color |
|---------------|---------------------------|
| Hex | 997661 |
| RGB | 153, 118, 97 |
| RGB Percent | 60%, 46%, 38% |
| CMY | 0.4000, 0.5373, 0.6196 |
| CMYK | 0.00, 0.23, 0.37, 0.40 |
| HSL | 23°, 22%, 49% |
| HSV | 23°, 37%, 60% |
| XYZ | 21.7730, 20.5922, 14.1364 |
| YIQ | 126.0710, 27.6010, 0.8890 |

Conversions

Conversions Part 2

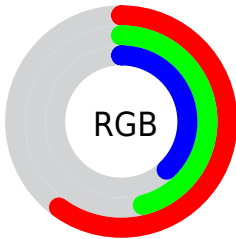
| Format | Color |
|-------------------------------------|--------------------------------|
| R_{YB} | 153, 131, 97 |
| Decimal | 10057313 |
| CIE Lab | 52.50, 10.68, 16.83 |
| CIE LCh | 53, 19.932, 57.615 |
| Yxy | 20.5922, 0.3854, 0.3645 |
| Android (android.graphics.Color) | 4288247393 (0xFF997661) |
| YUV | 126.0710, -14.3320, 23.6167 |
| Hunter-Lab | 45.3787, 6.2327, 13.2950 |

Details

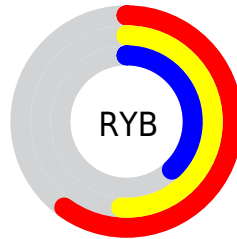
The YUV color **126.0710, -14.3320, 23.6167** is a dark color, and the websafe version is hex **996666**. A complement of this color would be **123.9290, 14.3320, -23.6167**, and the grayscale version is **126.0000, 0.0000, 0.0000**.

A 20% lighter version of the original color is **178.8540, -15.2110, 25.5610**, and **76.9890, -13.3056, 21.0576** is the 20% darker color. If you saturate the color by 10%, you get **118.4910, -17.9901, 30.2644**, and if you desaturate by 10%, it is **133.6510, -10.6739, 16.9691**.

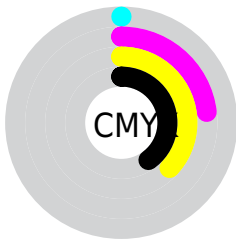
Distribution



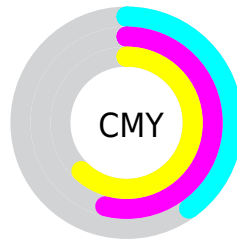
- Red (60%)
- Green (46%)
- Blue (38%)



- Red (60%)
- Yellow (51%)
- Blue (38%)



- Cyan (0%)
- Magenta (23%)
- Yellow (37%)
- Black (40%)



- Cyan (40%)
- Magenta (54%)
- Yellow (62%)

Brightness & Saturation Gradients

These gradients show how the YUV color 126.0710, -14.3320, 23.6167 changes by changing the brightness by 10 percent. The first figure shows a shift by +10% for each color and the second figure -10%.

Similar to the brightness gradients but the following saturation gradients show a change of the YUV color 126.0710, -14.3320, 23.6167 by changing the saturation by 10% instead.

■ 126.0710,
-14.3320, 23.6167

■ 126.0710,
-14.3320, 23.6167

■ 255.0000, 0.0000,
0.0000

■ 100.5870,
-13.6004, 22.2872

■ 178.8540,
-15.2110, 25.5610

■ 76.9890, -13.3056,
21.0576

■ 206.3380,
-15.9426, 26.8906

■ 53.6190, -12.1372,
19.6281

■ 231.3480,
-14.4686, 20.7428

■ 31.3800, -13.0053,
18.0837

■ 251.5630,
-10.6306, 3.0142

■ 8.9700, -4.4222,
18.4433

■ 0.0000, 0.0000,
0.0000

■ 126.0710,
-14.3320, 23.6167

■ 126.0710,
-14.3320, 23.6167

■ 118.4910,
-17.9901, 30.2644

■ 133.6510,
-10.6739, 16.9691

■ 111.3840,
-22.3743, 36.4972

■ 140.7580, -6.2897,
10.7362

■ 103.8040,
-26.0324, 43.1449

■ 148.3380, -2.6316,
4.0886

■ 96.8110, -29.9798,
49.2778

■ 155.3310, 1.3158,
-2.0443

■ 89.1170, -34.0747,
56.0254

■ 162.9110, 4.9739,
-8.6919

■ 82.1240, -38.0221,
62.1583

■ 170.0180, 9.3581,
-14.9248

■ 79.2060, -39.0486,
64.7173

■ 177.5980, 13.0162,
-21.5724

■ 185.1780, 16.6742,

-28.2201

■ 192.2850, 21.0585,
-34.4529

Harmonies

Analogous

The Analogous color harmony consists of three colors that are next to each other on the color wheel.



127.2980, -8.5279, 28.6797



126.0710, -14.3320, 23.6167



124.7230, -16.6254, 12.5209

Triad

The Triadic color harmony groups three colors that are evenly spaced from another and form a triangle on the color wheel.



126.0710, -14.3320, 23.6167



118.3830, 2.2762, -30.1539



126.3710, 14.1141, -0.3254

Complementary

The Complementary color scheme is a pair of colors which are on the opposite of each other on the color wheel.



126.0710, -14.3320, 23.6167



123.9290, 14.3320, -23.6167

Split Complementary

Split-complementary colors differ from the complementary color scheme. The scheme consists of three colors, the original color and two neighbors of the complement color.



123.1730, 17.6627, -18.5687



126.0710, -14.3320, 23.6167



117.0430, 11.3178, -36.8717

Square

The Square scheme is like the rectangle color scheme, but the four colors are evenly spaced on the color wheel.



126.0710, -14.3320, 23.6167



120.3540, -7.0765, -16.9735



119.5580, 16.9799, -32.9384



128.1620, 7.8081, 15.6439

Rectangle

The Rectangle color scheme consists of four colors that form a rectangle on the color wheel.



126.0710, -14.3320, 23.6167



123.1240, -14.8511, 3.3993



119.5580, 16.9799, -32.9384



125.4950, 16.0250, -6.5731

Sweetspot

The Sweet Spot groups the original color and five complimentary colors.



126.0710, -14.3320, 23.6167



188.2740, -5.5581, 9.4067



117.7340, 7.0331, 30.9283



92.9360, -2.9264, 5.3181



227.0000, 0.0000, 0.0000



99.0000, 0.0000, 0.0000

Same Dimension

The Same Dimension uses a secret algorithm to generate beautiful new colors.



126.0710, -14.3320, 23.6167



156.6830, -22.5217, 37.1120



142.5070, -22.4350, 9.2024



73.1530, -2.0474, 3.3738



72.9710, -35.9747, 58.7844



6.8220, -3.3632, 5.4181

Inverse Universe

The Inverse Universe completely reimagines the original color for something new.



123.9290, 14.3320, -23.6167



153.3170, 22.5217, -37.1120



107.4930, 22.4350, -9.2024



72.8470, 2.0474, -3.3738



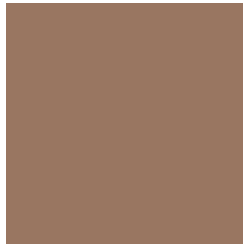
67.6160, 35.6853, -59.2992



6.1780, 3.3632, -5.4181

Previews

White Background



This preview shows how the YUV color 126.0710, -14.3320, 23.6167 looks on a white background.

Color Contrast Check

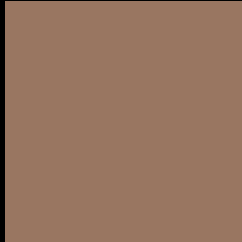
Large Text (above 18pt) WCAG AA ✓ Pass

Any Text WCAG AA × Fail

Large Text (above 18pt) WCAG AAA × Fail

Any Text WCAG AAA × Fail

Black Background



This preview shows how the YUV color 126.0710, -14.3320, 23.6167 looks on a black background.

Color Contrast Check

Large Text (above 18pt) WCAG AA ✓ Pass

Any Text WCAG AA ✓ Pass

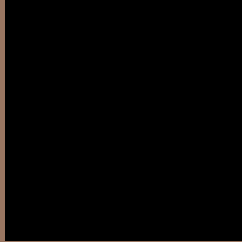
Large Text (above 18pt) WCAG AAA ✓ Pass

Any Text WCAG AAA × Fail

If you want to check with other color combinations, try the [Color Contrast Checker](#).

YUV 126.0710, -14.3320, 23.6167

Background



This preview shows how black text looks on a background with the YUV color 126.0710, -14.3320, 23.6167.



This preview shows how white text looks on a background with the YUV color 126.0710, -14.3320, 23.6167.

Color Blindness Simulation

Color vision deficiency is a very complex topic, and I could not describe the different causes any better than Wikipedia does, so if you want to learn more, you should check out their [article about color blindness](#).

Dichromacy



Original Color

126.0710, -14.3320, 23.6167

Protanopia

124.5420, -12.0992, 7.4177

Deuteranopia

125.4510, -14.0263, 18.8985



Tritanopia

127.5840, -2.2599, 24.9208

Trichromacy



Original Color

126.0710, -14.3320, 23.6167

Protanomaly

124.7600, -12.6997, 13.3655

Deuteranomaly

125.4620, -14.0318, 20.6428

Tritanomaly

126.8460, -6.3331, 24.6911

Monochromacy



Original Color

126.0710, -14.3320, 23.6167

Achromatopsia

126.0000, 0.0000, 0.0000

Achromatomaly

125.9750, -5.4107, 8.7919

CSS Examples

Text

The CSS property to change the color of the text to YUV 126.0710, -14.3320, 23.6167 is called "color". The color property can be set on classes, ids or directly on the HTML element.

This example shows how text in the color `rgb(153, 118, 97)` looks like.

```
.text, #text, p{  
    color:rgb(153, 118, 97)  
}
```

If you want to add a text shadow in that color use the text-shadow property, you can generate a text shadow directly with our [CSS Text Shadow Generator](#).

Here you see how black text with a 4 pixel rgb(153, 118, 97) colored shadow looks like.

```
.shadow{ text-shadow: 4px 4px 2px rgb(153, 118, 97) }
```

Border

The CSS property to change the border of an element to YUV 126.0710, -14.3320, 23.6167 is called "border".

The border property can be set on classes, ids or directly on the HTML element.

This example shows the color as border, it can be applied via the CSS property "border" or "border-color".

```
.border, #border, table{ border:4px solid rgb(153, 118, 97) }
```


If only the border color should be changed use the property `border-color`.

```
.border{ border-color:rgb(153, 118, 97) }
```

If you want to add a box shadow in that color use:

Here you see how a box with a 4 pixel `rgb(153, 118, 97)` colored shadow looks like.

```
.boxshadow{ -moz-box-shadow:4px 4px 4px  
4px rgb(153, 118, 97); -webkit-box-  
shadow:4px 4px 4px 4px rgb(153, 118, 97);  
box-shadow:4px 4px 4px 4px rgb(153, 118,  
97) }
```

Background

The CSS property to change the background color of an element to YUV 126.0710, -14.3320, 23.6167 is called "background". The background property can be set on classes, ids or directly on the HTML element.

```
.background, #background, body{  
background: rgb(153, 118, 97) }
```

If only the background color should be changed can be used:

```
.background{ background-color: rgb(153,  
118, 97) }
```

This example shows the color as background, it is applied via the CSS property "background".

To optimize and compress your CSS code, you can use our [online CSS compressor and optimizer](#) based on csstidy. If you want to create a linear or radial gradient as background or border, check our [CSS Gradient Generator](#).

Hey! You found this booklet interesting? Support Converting Colors with the new Membership Option!

The pro membership hides all ads, plus gives you double the colors in the color bucket, and more awesome pro features!

[Learn more, Memberships starting at \\$2.50/m!](#)

**Follow me
on Twitter!**

@ConvertingColor