

Converting Colors

YUV(126.3370, -14.4631,
18.9985)

Have a look what the booklet for
YUV(126.3370, -14.4631, 18.9985)
contains.

YUV(126.3370, -14.4631, 18.9985)	3
<i>Conversions</i>	4
<i>Details</i>	6
<i>Harmonies</i>	12
<i>Previews</i>	24
<i>Color Blindness Simulation</i>	28
<i>CSS Examples</i>	31

Color

**YUV(126.3370, -14.4631,
18.9985)**

Conversions

Conversions Part 1

Format	Color
Hex	947961
RGB	148, 121, 97
RGB Percent	58%, 47%, 38%
CMY	0.4196, 0.5255, 0.6196
CMYK	0.00, 0.18, 0.34, 0.42
HSL	28°, 21%, 48%
HSV	28°, 34%, 58%
XYZ	21.2078, 20.8337, 14.2128
YIQ	126.3370, 23.7960, -1.7400

Conversions

Conversions Part 2

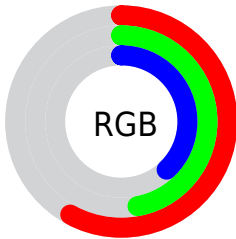
Format	Color
R_{YB}	148, 142, 97
Decimal	9730401
CIE _{Lab}	52.77, 6.86, 17.11
CIE _{LCh}	53, 18.432, 68.165
Yxy	20.8337, 0.3770, 0.3703
Android (android.graphics.Color)	4287920481 (0xFF947961)
YUV	126.3370, -14.4631, 18.9985
Hunter-Lab	45.6440, 3.0604, 13.4888

Details

The YUV color **126.3370, -14.4631, 18.9985** is a dark color, and the websafe version is hex **996666**. A complement of this color would be **118.6630, 14.4631, -18.9985**, and the grayscale version is **126.0000, 0.0000, 0.0000**.

A 20% lighter version of the original color is **179.1200, -15.3422, 20.9428**, and **77.2550, -13.4367, 16.4394** is the 20% darker color. If you saturate the color by 10%, you get **119.9310, -18.7000, 24.6165**, and if you desaturate by 10%, it is **132.7430, -10.2263, 13.3804**.

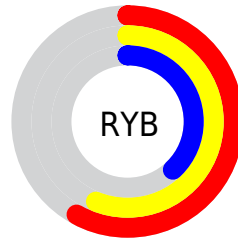
Distribution



Red (58%)

Green (47%)

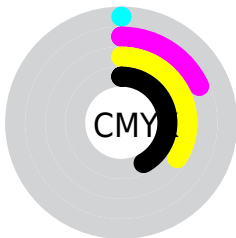
Blue (38%)



Red (58%)

Yellow (56%)

Blue (38%)

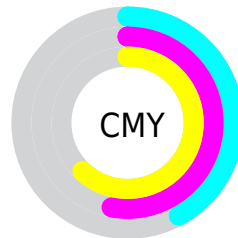


Cyan (0%)

Magenta (18%)

Yellow (34%)

Black (42%)



Cyan (42%)

Magenta (53%)

Yellow (62%)

Brightness & Saturation Gradients

These gradients show how the YUV color 126.3370, -14.4631, 18.9985 changes by changing the brightness by 10 percent. The first figure shows a shift by +10% for each color and the second figure -10%.

Similar to the brightness gradients but the following saturation gradients show a change of the YUV color 126.3370, -14.4631, 18.9985 by changing the saturation by 10% instead.

■ 126.3370,
-14.4631, 18.9985

■ 126.3370,
-14.4631, 18.9985

■ 255.0000, 0.0000,
0.0000

■ 101.1520,
-13.8789, 18.2837

■ 179.1200,
-15.3422, 20.9428

■ 77.2550, -13.4367,
16.4394

■ 206.8920,
-16.2158, 21.1427

■ 54.1840, -12.4157,
15.6246

■ 233.6960,
-15.6261, 18.6836

■ 31.9450, -13.2839,
14.0802

■ 252.1500,
-10.9200, 2.4994

■ 10.1220, -4.9901,
13.9250

■ 0.0000, 0.0000,
0.0000

■ 126.3370,
-14.4631, 18.9985

■ 126.3370,
-14.4631, 18.9985

■ 119.9310,
-18.7000, 24.6165

■ 132.7430,
-10.2263, 13.3804

■ 113.5250,
-22.9368, 30.2346

■ 139.1490, -5.9895,
7.7623

■ 107.2330,
-26.7369, 35.7527

■ 145.4410, -2.1894,
2.2442

■ 101.4140,
-31.2631, 40.8559

■ 151.2600, 2.3368,
-2.8590

■ 95.0080, -35.4999,
46.4740

■ 157.6660, 6.5737,
-8.4771

■ 88.6020, -39.7368,
52.0920

■ 164.0720, 10.8105,
-14.0951

■ 85.3420, -42.0736,
54.9511

■ 170.4780, 15.0473,
-19.7132

■ 176.7700, 18.8474,

-25.2313

■ 183.1760, 23.0842,
-30.8494

Harmonies

Analogous

The Analogous color harmony consists of three colors that are next to each other on the color wheel.



127.8200, -10.2643, 25.5909



126.3370, -14.4631, 18.9985



124.5590, -14.5726, 7.4028

Triad

The Triadic color harmony groups three colors that are evenly spaced from another and form a triangle on the color wheel.



126.3370, -14.4631, 18.9985



119.1810, 5.3338, -30.8537



127.7200, 11.4770, 5.5076

Complementary

The Complementary color scheme is a pair of colors which are on the opposite of each other on the color wheel.



126.3370, -14.4631, 18.9985



118.6630, 14.4631, -18.9985

Split Complementary

Split-complementary colors differ from the complementary color scheme. The scheme consists of three colors, the original color and two neighbors of the complement color.



125.6470, 15.4570, -11.0914



126.3370, -14.4631, 18.9985



119.4070, 12.6173, -33.6829

Square

The Square scheme is like the rectangle color scheme, but the four colors are evenly spaced on the color wheel.



126.3370, -14.4631, 18.9985



120.9560, -3.4293, -20.1324



122.3740, 16.0846, -25.7610



128.6740, 4.5977, 18.7029

Rectangle

The Rectangle color scheme consists of four colors that form a rectangle on the color wheel.



126.3370, -14.4631, 18.9985



123.9600, -12.7983, -1.7189



122.3740, 16.0846, -25.7610



127.1430, 13.2405, -0.1254

Sweetspot

The Sweet Spot groups the original color and five complimentary colors.



126.3370, -14.4631, 18.9985



182.9640, -5.4053, 7.0476



115.3270, 4.2758, 28.6542



92.1100, -3.5052, 4.2885



224.0000, 0.0000, 0.0000



97.0000, 0.0000, 0.0000

Same Dimension

The Same Dimension uses a secret algorithm to generate beautiful new colors.



126.3370, -14.4631, 18.9985



158.0410, -22.2052, 28.9050



141.0120, -21.6979, 6.1285



70.8540, -1.9000, 2.7590



79.4170, -39.1526, 51.3773



5.9250, -2.9210, 3.5738

Inverse Universe

The Inverse Universe completely reimagines the original color for something new.



118.6630, 14.4631, -18.9985



145.9590, 22.2052, -28.9050



103.9880, 21.6979, -6.1285



69.5590, 2.1894, -2.2442



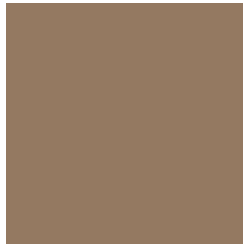
58.5830, 39.1526, -51.3773



4.0750, 2.9210, -3.5738

Previews

White Background



This preview shows how the YUV color 126.3370, -14.4631, 18.9985 looks on a white background.

Color Contrast Check

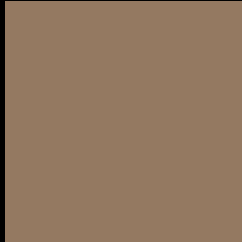
Large Text (above 18pt) WCAG AA ✓ Pass

Any Text WCAG AA × Fail

Large Text (above 18pt) WCAG AAA × Fail

Any Text WCAG AAA × Fail

Black Background



This preview shows how the YUV color 126.3370, -14.4631, 18.9985 looks on a black background.

Color Contrast Check

Large Text (above 18pt) WCAG AA ✓ Pass

Any Text WCAG AA ✓ Pass

Large Text (above 18pt) WCAG AAA ✓ Pass

Any Text WCAG AAA × Fail

If you want to check with other color combinations, try the [Color Contrast Checker](#).

YUV 126.3370, -14.4631, 18.9985

Background



This preview shows how black text looks on a background with the YUV color 126.3370, -14.4631, 18.9985.



This preview shows how white text looks on a background with the YUV color 126.3370, -14.4631, 18.9985.

Color Blindness Simulation

Color vision deficiency is a very complex topic, and I could not describe the different causes any better than Wikipedia does, so if you want to learn more, you should check out their [article about color blindness](#).

Dichromacy



Original Color

126.3370, -14.4631, 18.9985

Protanopia

125.3140, -12.9728, 7.6176

Deuteranopia

126.3370, -14.4631, 18.9985



Tritanopia

128.1920, -1.0807, 20.0026

Trichromacy



Original Color

126.3370, -14.4631, 18.9985

Protanomaly

125.5210, -13.5679, 11.8211

Deuteranomaly

126.3370, -14.4631, 18.9985

Tritanomaly

127.2260, -6.0274, 19.9728

Monochromacy



Original Color

126.3370, -14.4631, 18.9985

Achromatopsia

126.0000, 0.0000, 0.0000

Achromatomaly

125.9640, -5.4053, 7.0476

CSS Examples

Text

The CSS property to change the color of the text to YUV 126.3370, -14.4631, 18.9985 is called "color". The color property can be set on classes, ids or directly on the HTML element.

This example shows how text in the color `rgb(148, 121, 97)` looks like.

```
.text, #text, p{  
    color:rgb(148, 121, 97)  
}
```

If you want to add a text shadow in that color use the text-shadow property, you can generate a text shadow directly with our [CSS Text Shadow Generator](#).

Here you see how black text with a 4 pixel rgb(148, 121, 97) colored shadow looks like.

```
.shadow{ text-shadow: 4px 4px 2px rgb(148, 121, 97) }
```

Border

The CSS property to change the border of an element to YUV 126.3370, -14.4631, 18.9985 is called "border".

The border property can be set on classes, ids or directly on the HTML element.

This example shows the color as border, it can be applied via the CSS property "border" or "border-color".

```
.border, #border, table{ border:4px solid rgb(148, 121, 97) }
```


If only the border color should be changed use the property `border-color`.

```
.border{ border-color:rgb(148, 121, 97) }
```

If you want to add a box shadow in that color use:

Here you see how a box with a 4 pixel `rgb(148, 121, 97)` colored shadow looks like.

```
.boxshadow{ -moz-box-shadow:4px 4px 4px  
4px rgb(148, 121, 97); -webkit-box-  
shadow:4px 4px 4px 4px rgb(148, 121, 97);  
box-shadow:4px 4px 4px 4px rgb(148, 121,  
97) }
```

Background

The CSS property to change the background color of an element to YUV 126.3370, -14.4631, 18.9985 is called "background". The background property can be set on classes, ids or directly on the HTML element.

```
.background, #background, body{  
background: rgb(148, 121, 97) }
```

If only the background color should be changed can be used:

```
.background{ background-color: rgb(148,  
121, 97) }
```

This example shows the color as background, it is applied via the CSS property "background".

To optimize and compress your CSS code, you can use our [online CSS compressor and optimizer](#) based on csstidy. If you want to create a linear or radial gradient as background or border, check our [CSS Gradient Generator](#).

Hey! You found this booklet interesting? Support Converting Colors with the new Membership Option!

The pro membership hides all ads, plus gives you double the colors in the color bucket, and more awesome pro features!

[Learn more, Memberships starting at \\$2.50/m!](#)

**Follow me
on Twitter!**

@ConvertingColor