

Converting Colors

YUV(127.3230, -19.8792,
29.5347)

Have a look what the booklet for
YUV(127.3230, -19.8792, 29.5347)
contains.

YUV(127.3230, -19.8792, 29.5347)	3
<i>Conversions</i>	4
<i>Details</i>	6
<i>Harmonies</i>	12
<i>Previews</i>	24
<i>Color Blindness Simulation</i>	28
<i>CSS Examples</i>	31

Color

**YUV(127.3230, -19.8792,
29.5347)**

Conversions

Conversions Part 1

Format	Color
Hex	A17657
RGB	161, 118, 87
RGB Percent	63%, 46%, 34%
CMY	0.3686, 0.5373, 0.6588
CMYK	0.00, 0.27, 0.46, 0.37
HSL	25°, 30%, 49%
HSV	25°, 46%, 63%
XYZ	22.8967, 21.2221, 11.9063
YIQ	127.3230, 35.5790, -0.5250

Conversions

Conversions Part 2

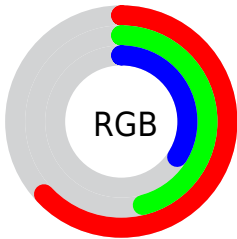
Format	Color
R_{YB}	161, 140, 87
Decimal	10581591
CIE _{Lab}	53.19, 12.87, 23.66
CIE _{LCh}	53, 26.931, 61.451
Yxy	21.2221, 0.4087, 0.3788
Android (android.graphics.Color)	4288771671 (0xFFA17657)
YUV	127.3230, -19.8792, 29.5347
Hunter-Lab	46.0674, 8.1011, 16.9234

Details

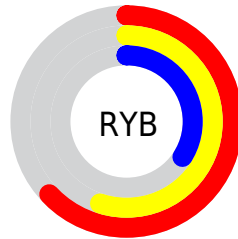
The YUV color **127.3230, -19.8792, 29.5347** is a dark color, and the websafe version is hex **996633**. A complement of this color would be **120.6770, 19.8792, -29.5347**, and the grayscale version is **127.0000, 0.0000, 0.0000**.

A 20% lighter version of the original color is **180.2910, -21.3425, 32.1938**, and **77.7570, -18.1212, 25.6461** is the 20% darker color. If you saturate the color by 10%, you get **120.2160, -24.2635, 35.7676**, and if you desaturate by 10%, it is **134.4300, -15.4950, 23.3019**.

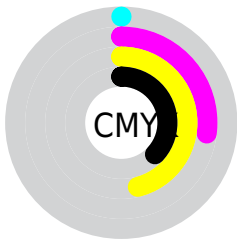
Distribution



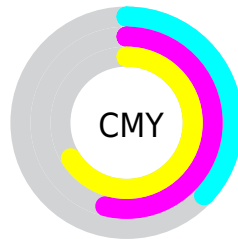
- Red (63%)
- Green (46%)
- Blue (34%)



- Red (63%)
- Yellow (55%)
- Blue (34%)



- Cyan (0%)
- Magenta (27%)
- Yellow (46%)
- Black (37%)



- Cyan (37%)
- Magenta (54%)
- Yellow (66%)

Brightness & Saturation Gradients

These gradients show how the YUV color 127.3230, -19.8792, 29.5347 changes by changing the brightness by 10 percent. The first figure shows a shift by +10% for each color and the second figure -10%.

Similar to the brightness gradients but the following saturation gradients show a change of the YUV color 127.3230, -19.8792, 29.5347 by changing the saturation by 10% instead.

■ 127.3230,
-19.8792, 29.5347

■ 127.3230,
-19.8792, 29.5347

■ 255.0000, 0.0000,
0.0000

■ 101.8390,
-19.1476, 28.2052

■ 180.2910,
-21.3425, 32.1938

■ 77.7570, -18.1212,
25.6461

■ 208.7750,
-22.0741, 33.5233

■ 54.0880, -16.8054,
23.6018

■ 230.6810,
-19.5627, 21.3278

■ 32.3050, -15.9264,
21.6575

■ 250.3090,
-15.4353, 4.1140

■ 10.7530, -5.3012,
20.3876

■ 254.0880, -3.4944,
0.7998

■ 0.0000, 0.0000,
0.0000

■ 127.3230,
-19.8792, 29.5347

■ 127.3230,
-19.8792, 29.5347

■ 120.2160,
-24.2635, 35.7676

■ 134.4300,
-15.4950, 23.3019

■ 112.5220,
-28.3583, 42.5152

■ 142.1240,
-11.4001, 16.5543

■ 105.4150,
-32.7426, 48.7480

■ 149.2310, -7.0159,
10.3214

■ 98.3080, -37.1268,
54.9809

■ 156.3380, -2.6316,
4.0886

■ 90.6140, -41.2217,
61.7285

■ 164.1460, 1.9000,
-2.7590

■ 87.4680, -43.1217,
64.4876

■ 171.2530, 6.2843,
-8.9919

■ 178.3600, 10.6685,
-15.2247

■ 186.0540, 14.7634,

-21.9724

■ 193.1610, 19.1476,
-28.2052

Harmonies

Analogous

The Analogous color harmony consists of three colors that are next to each other on the color wheel.



129.0280, -12.3388, 37.6864



127.3230, -19.8792, 29.5347



125.6540, -22.0144, 14.3354

Triad

The Triadic color harmony groups three colors that are evenly spaced from another and form a triangle on the color wheel.



127.3230, -19.8792, 29.5347



115.1960, 5.8194, -46.6529



129.2340, 18.6186, 1.5488

Complementary

The Complementary color scheme is a pair of colors which are on the opposite of each other on the color wheel.



127.3230, -19.8792, 29.5347



120.6770, 19.8792, -29.5347

Split Complementary

Split-complementary colors differ from the complementary color scheme. The scheme consists of three colors, the original color and two neighbors of the complement color.



124.4480, 23.9361, -24.0719



127.3230, -19.8792, 29.5347



112.4470, 18.5136, -58.2740

Square

The Square scheme is like the rectangle color scheme, but the four colors are evenly spaced on the color wheel.



127.3230, -19.8792, 29.5347



119.7720, -7.7756, -26.1100



116.8210, 24.7382, -48.0780



130.3740, 9.6756, 23.3510

Rectangle

The Rectangle color scheme consists of four colors that form a rectangle on the color wheel.



127.3230, -19.8792, 29.5347



124.0330, -20.2293, 1.7251



116.8210, 24.7382, -48.0780



127.7600, 20.8243, -5.9285

Sweetspot

The Sweet Spot groups the original color and five complimentary colors.



127.3230, -19.8792, 29.5347



195.7150, -7.7475, 11.6509



114.0280, 7.8742, 41.1944



96.4910, -4.6791, 7.4624



232.0000, 0.0000, 0.0000



105.0000, 0.0000, 0.0000

Same Dimension

The Same Dimension uses a secret algorithm to generate beautiful new colors.



127.3230, -19.8792, 29.5347



156.5610, -30.8426, 45.9890



149.0420, -30.5867, 10.4872



78.0390, -2.4842, 3.4738



79.1620, -39.0269, 57.7399



9.4910, -4.6791, 7.4624

Inverse Universe

The Inverse Universe completely reimagines the original color for something new.



120.6770, 19.8792, -29.5347



146.4390, 30.8426, -45.9890



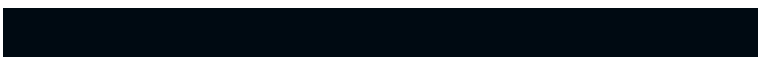
98.9580, 30.5867, -10.4872



76.9610, 2.4842, -3.4738



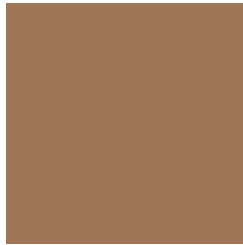
65.8380, 39.0269, -57.7399



7.9220, 4.9685, -6.9476

Previews

White Background



This preview shows how the YUV color 127.3230, -19.8792, 29.5347 looks on a white background.

Color Contrast Check

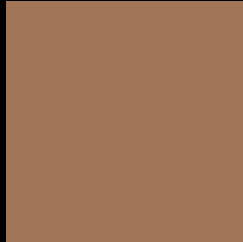
Large Text (above 18pt) WCAG AA ✓ Pass

Any Text WCAG AA × Fail

Large Text (above 18pt) WCAG AAA × Fail

Any Text WCAG AAA × Fail

Black Background



This preview shows how the YUV color 127.3230, -19.8792, 29.5347 looks on a black background.

Color Contrast Check

Large Text (above 18pt) WCAG AA ✓ Pass

Any Text WCAG AA ✓ Pass

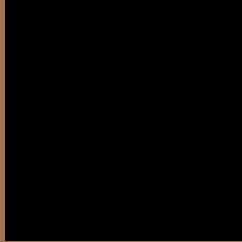
Large Text (above 18pt) WCAG AAA ✓ Pass

Any Text WCAG AAA × Fail

If you want to check with other color combinations, try the [Color Contrast Checker](#).

YUV 127.3230, -19.8792, 29.5347

Background



This preview shows how black text looks on a background with the YUV color 127.3230, -19.8792, 29.5347.



This preview shows how white text looks on a background with the YUV color 127.3230, -19.8792, 29.5347.

Color Blindness Simulation

Color vision deficiency is a very complex topic, and I could not describe the different causes any better than Wikipedia does, so if you want to learn more, you should check out their [article about color blindness](#).

Dichromacy



Original Color

127.3230, -19.8792, 29.5347

Protanopia

125.8860, -17.1988, 9.7470

Deuteranopia

126.8660, -20.1469, 22.0425



Tritanopia

129.2750, -3.5866, 30.4538

Trichromacy



Original Color

127.3230, -19.8792, 29.5347

Protanomaly

126.7020, -18.0941, 16.9243

Deuteranomaly

127.1760, -20.2998, 24.4016

Tritanomaly

128.6680, -9.6963, 30.1092

Monochromacy



Original Color

127.3230, -19.8792, 29.5347

Achromatopsia

127.0000, 0.0000, 0.0000

Achromatomaly

127.1170, -7.4527, 10.4214

CSS Examples

Text

The CSS property to change the color of the text to YUV 127.3230, -19.8792, 29.5347 is called "color". The color property can be set on classes, ids or directly on the HTML element.

This example shows how text in the color `rgb(161, 118, 87)` looks like.

```
.text, #text, p{  
    color:rgb(161, 118, 87)  
}
```

If you want to add a text shadow in that color use the text-shadow property, you can generate a text shadow directly with our [CSS Text Shadow Generator](#).

Here you see how black text with a 4 pixel rgb(161, 118, 87) colored shadow looks like.

```
.shadow{ text-shadow: 4px 4px 2px rgb(161, 118, 87) }
```

Border

The CSS property to change the border of an element to YUV 127.3230, -19.8792, 29.5347 is called "border".

The border property can be set on classes, ids or directly on the HTML element.

This example shows the color as border, it can be applied via the CSS property "border" or "border-color".

```
.border, #border, table{ border:4px solid rgb(161, 118, 87) }
```


If only the border color should be changed use the property `border-color`.

```
.border{ border-color:rgb(161, 118, 87) }
```

If you want to add a box shadow in that color use:

Here you see how a box with a 4 pixel `rgb(161, 118, 87)` colored shadow looks like.

```
.boxshadow{ -moz-box-shadow:4px 4px 4px  
4px rgb(161, 118, 87); -webkit-box-  
shadow:4px 4px 4px 4px rgb(161, 118, 87);  
box-shadow:4px 4px 4px 4px rgb(161, 118,  
87) }
```

Background

The CSS property to change the background color of an element to YUV 127.3230, -19.8792, 29.5347 is called "background". The background property can be set on classes, ids or directly on the HTML element.

```
.background, #background, body{  
background: rgb(161, 118, 87) }
```

If only the background color should be changed can be used:

```
.background{ background-color: rgb(161,  
118, 87) }
```

This example shows the color as background, it is applied via the CSS property "background".

To optimize and compress your CSS code, you can use our [online CSS compressor and optimizer](#) based on csstidy. If you want to create a linear or radial gradient as background or border, check our [CSS Gradient Generator](#).

Hey! You found this booklet interesting? Support Converting Colors with the new Membership Option!

The pro membership hides all ads, plus gives you double the colors in the color bucket, and more awesome pro features!

[Learn more, Memberships starting at \\$2.50/m!](#)

**Follow me
on Twitter!**

@ConvertingColor