

Converting Colors

YUV(127.5520, -3.2301,
103.0019)

Have a look what the booklet for
YUV(127.5520, -3.2301, 103.0019)
contains.

YUV(127.5520, -3.2301, 103.0019)	3
<i>Conversions</i>	4
<i>Details</i>	6
<i>Harmonies</i>	12
<i>Previews</i>	24
<i>Color Blindness Simulation</i>	28
<i>CSS Examples</i>	31

Color

**YUV(127.5520, -3.2301,
103.0019)**

Conversions

Conversions Part 1

Format	Color
Hex	F54579
RGB	245, 69, 121
RGB Percent	96%, 27%, 47%
CMY	0.0392, 0.7294, 0.5255
CMYK	0.00, 0.72, 0.51, 0.04
HSL	342°, 90%, 62%
HSV	342°, 72%, 96%
XYZ	43.2355, 25.0492, 20.6454
YIQ	127.5520, 88.2040, 53.4840

Conversions

Conversions Part 2

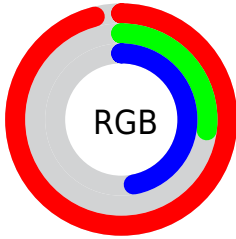
Format	Color
R_{YB}	245, 69, 121
Decimal	16074105
CIE _{Lab}	57.12, 69.35, 11.18
CIE _{LCh}	57, 70.244, 9.154
Yxy	25.0492, 0.4862, 0.2817
Android (android.graphics.Color)	4294264185 (0xFFFF54579)
YUV	127.5520, -3.2301, 103.0019
Hunter-Lab	50.0492, 66.6130, 10.5772

Details

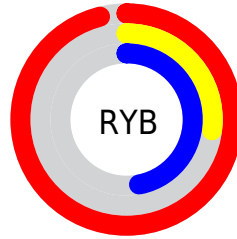
The YUV color **127.5520, -3.2301, 103.0019** is a dark color, and the websafe version is hex **CC3366**. The color can be described as middle washed rose. A complement of this color would be **186.4480, 3.2301, -103.0019**, and the grayscale version is **128.0000, 0.0000, 0.0000**.

A 20% lighter version of the original color is **171.6900, 0.6458, 73.0629**, and **63.0390, 4.9108, 105.2058** is the 20% darker color. If you saturate the color by 10%, you get **111.5260, -3.7103, 117.0567**, and if you desaturate by 10%, it is **144.1650, -3.0393, 88.4323**.

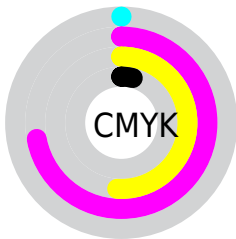
Distribution



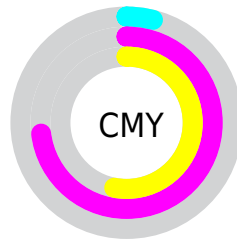
- Red (96%)
- Green (27%)
- Blue (47%)



- Red (96%)
- Yellow (27%)
- Blue (47%)



- Cyan (0%)
- Magenta (72%)
- Yellow (51%)
- Black (4%)



- Cyan (4%)
- Magenta (73%)
- Yellow (53%)

Brightness & Saturation Gradients

These gradients show how the YUV color 127.5520, -3.2301, 103.0019 changes by changing the brightness by 10 percent. The first figure shows a shift by +10% for each color and the second figure -10%.

Similar to the brightness gradients but the following saturation gradients show a change of the YUV color 127.5520, -3.2301, 103.0019 by changing the saturation by 10% instead.

127.5520, -3.2301,
103.0019

127.5520, -3.2301,
103.0019

255.0000, 0.0000,
0.0000

93.7140, 1.1270,
105.4908

171.6900, 0.6458,
73.0629

63.0390, 4.9108,
105.2058

192.3780, 3.7576,
54.9195

51.2620, -0.1292,
88.3472

212.5930, 7.5957,
37.1909

39.5990, -4.7323,
71.3887

232.6940, 10.9969,
19.5624

27.9640, -11.8143,
56.1596

250.3040, 2.3151,
4.1184

19.1790, -7.9762,
38.4310

8.1870, -3.5432,

16.4990

■ 0.0000, 0.0000,
0.0000

■ 127.5520, -3.2301,
103.0019

■ 127.5520, -3.2301,
103.0019

■ 111.5260, -3.7103,
117.0567

■ 144.1650, -3.0393,
88.4323

■ 94.7990, -4.3379,
131.7263

■ 160.3050, -2.1224,
74.2775

■ 81.4630, -4.6653,
143.4219

■ 176.9180, -1.9316,
59.7079

■ 192.9440, -1.4514,
45.6531

■ 209.5570, -1.2606,
31.0835

225.6970, -0.3436,
16.9287

242.3100, -0.1528,
2.3591

252.0100, 1.4741,
-6.1478

Harmonies

Analogous

The Analogous color harmony consists of three colors that are next to each other on the color wheel.



135.2710, 23.0374, 77.8153



127.5520, -3.2301, 103.0019



129.2770, -33.1676, 91.8421

Triad

The Triadic color harmony groups three colors that are evenly spaced from another and form a triangle on the color wheel.



127.5520, -3.2301, 103.0019



117.8690, -45.2914, -33.2111



119.7130, 65.2175, -104.9883

Complementary

The Complementary color scheme is a pair of colors which are on the opposite of each other on the color wheel.



127.5520, -3.2301, 103.0019



186.4480, 3.2301, -103.0019

Split Complementary

Split-complementary colors differ from the complementary color scheme. The scheme consists of three colors, the original color and two neighbors of the complement color.



119.9630, 45.8672, -105.2076



127.5520, -3.2301, 103.0019



105.4680, -7.1327, -92.4954

Square

The Square scheme is like the rectangle color scheme, but the four colors are evenly spaced on the color wheel.



127.5520, -3.2301, 103.0019



126.4320, -62.3310, 18.9151



114.5250, 19.9542, -100.4384



110.0760, 71.4475, -96.5367

Rectangle

The Rectangle color scheme consists of four colors that form a rectangle on the color wheel.



127.5520, -3.2301, 103.0019



130.1780, -53.3318, 72.6349



114.5250, 19.9542, -100.4384



120.9210, 59.6919, -106.0477

Sweetspot

The Sweet Spot groups the original color and five complimentary colors.



127.5520, -3.2301, 103.0019



217.5680, -1.2660, 32.8279



125.8410, 58.7454, 58.0214



105.3060, -0.6439, 19.9026



0.0000, 0.0000, 0.0000



128.0000, 0.0000, 0.0000

Same Dimension

The Same Dimension uses a secret algorithm to generate beautiful new colors.



127.5520, -3.2301, 103.0019



108.7770, -4.3271, 128.2376



142.1690, -36.0723, 90.1828



114.0440, -0.0217, 6.9774



61.8840, -3.3938, 108.8497



19.5790, -1.2714, 34.5722

Inverse Universe

The Inverse Universe completely reimagines the original color for something new.



127.5520, -3.2301, 103.0019



108.7770, -4.3271, 128.2376



171.8310, 36.0723, -90.1828



114.0440, -0.0217, 6.9774



61.8840, -3.3938, 108.8497



19.5790, -1.2714, 34.5722

Previews

White Background



This preview shows how the YUV color 127.5520, -3.2301, 103.0019 looks on a white background.

Color Contrast Check

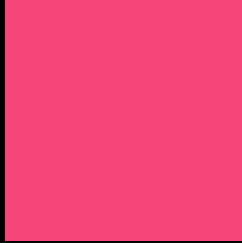
Large Text (above 18pt) WCAG AA ✓ Pass

Any Text WCAG AA × Fail

Large Text (above 18pt) WCAG AAA × Fail

Any Text WCAG AAA × Fail

Black Background



This preview shows how the YUV color 127.5520, -3.2301, 103.0019 looks on a black background.

Color Contrast Check

Large Text (above 18pt) WCAG AA ✓ Pass

Any Text WCAG AA ✓ Pass

Large Text (above 18pt) WCAG AAA ✓ Pass

Any Text WCAG AAA × Fail

If you want to check with other color combinations, try the [Color Contrast Checker](#).

YUV 127.5520, -3.2301, 103.0019

Background



This preview shows how black text looks on a background with the YUV color 127.5520, -3.2301, 103.0019.



This preview shows how white text looks on a background with the YUV color 127.5520, -3.2301,

Color Blindness Simulation

Color vision deficiency is a very complex topic, and I could not describe the different causes any better than Wikipedia does, so if you want to learn more, you should check out their [article about color blindness](#).

Dichromacy



Original Color

127.5520, -3.2301, 103.0019

Protanopia

137.7960, 9.4676, -3.3291

Deuteranopia

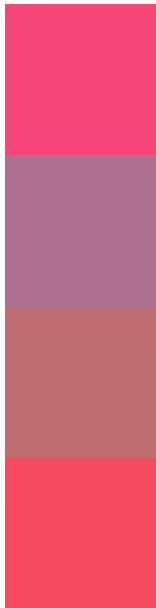
137.7930, -12.7159, 18.5985



Tritanopia

127.7910, -22.5750, 101.0383

Trichromacy



Original Color

127.5520, -3.2301, 103.0019

Protanomaly

134.1860, 4.8383, 34.9169

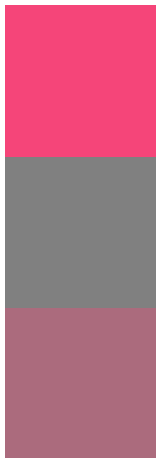
Deuteranomaly

133.9030, -9.3192, 49.1971

Tritanomaly

127.9250, -15.7390, 101.7978

Monochromacy



Original Color

127.5520, -3.2301, 103.0019

Achromatopsia

128.0000, 0.0000, 0.0000

Achromatomaly

128.1880, -1.5717, 37.5461

CSS Examples

Text

The CSS property to change the color of the text to YUV 127.5520, -3.2301, 103.0019 is called "color". The color property can be set on classes, ids or directly on the HTML element.

This example shows how text in the color `rgb(245, 69, 121)` looks like.

```
.text, #text, p{  
    color:rgb(245, 69, 121)  
}
```

If you want to add a text shadow in that color use the text-shadow property, you can generate a text shadow directly with our [CSS Text Shadow Generator](#).

Here you see how black text with a 4 pixel rgb(245, 69, 121) colored shadow looks like.

```
.shadow{ text-shadow: 4px 4px 2px rgb(245, 69, 121) }
```

Border

The CSS property to change the border of an element to YUV 127.5520, -3.2301, 103.0019 is called "border".

The border property can be set on classes, ids or directly on the HTML element.

This example shows the color as border, it can be applied via the CSS property "border" or "border-color".

```
.border, #border, table{ border:4px solid rgb(245, 69, 121) }
```


If only the border color should be changed use the property `border-color`.

```
.border{ border-color:rgb(245, 69, 121) }
```

If you want to add a box shadow in that color use:

Here you see how a box with a 4 pixel `rgb(245, 69, 121)` colored shadow looks like.

```
.boxshadow{ -moz-box-shadow:4px 4px 4px  
4px rgb(245, 69, 121); -webkit-box-  
shadow:4px 4px 4px 4px rgb(245, 69, 121);  
box-shadow:4px 4px 4px 4px rgb(245, 69,  
121) }
```

Background

The CSS property to change the background color of an element to YUV 127.5520, -3.2301, 103.0019 is called "background". The background property can be set on classes, ids or directly on the HTML element.

```
.background, #background, body{  
background: rgb(245, 69, 121) }
```

If only the background color should be changed can be used:

```
.background{ background-color: rgb(245, 69,  
121) }
```

This example shows the color as background, it is applied via the CSS property "background".

To optimize and compress your CSS code, you can use our [online CSS compressor and optimizer](#) based on csstidy. If you want to create a linear or radial gradient as background or border, check our [CSS Gradient Generator](#).

Hey! You found this booklet interesting? Support Converting Colors with the new Membership Option!

The pro membership hides all ads, plus gives you double the colors in the color bucket, and more awesome pro features!

[Learn more, Memberships starting at \\$2.50/m!](#)

**Follow me
on Twitter!**

@ConvertingColor