

# Converting Colors

YUV(128.2170, -12.4320,  
20.8577)

Have a look what the booklet for  
YUV(128.2170, -12.4320, 20.8577)  
contains.

<b>YUV(128.2170, -12.4320, 20.8577)</b> .....	3
<b><i>Conversions</i></b> .....	4
<b><i>Details</i></b> .....	6
<b><i>Harmonies</i></b> .....	12
<b><i>Previews</i></b> .....	24
<b><i>Color Blindness Simulation</i></b> .....	28
<b><i>CSS Examples</i></b> .....	31

# Color

**YUV(128.2170, -12.4320,  
20.8577)**

# Conversions

## Conversions Part 1

<b>Format</b>	<b>Color</b>
Hex	987967
RGB	152, 121, 103
RGB Percent	60%, 47%, 40%
CMY	0.4039, 0.5255, 0.5961
CMYK	0.00, 0.20, 0.32, 0.40
HSL	22°, 19%, 50%
HSV	22°, 32%, 60%
XYZ	22.2344, 21.3294, 15.7771
YIQ	128.2170, 24.2540, 0.9740

# Conversions

## Conversions Part 2

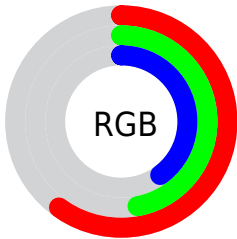
<b>Format</b>	<b>Color</b>
<b>R<sub>YB</sub></b>	152, 131, 103
Decimal	9992551
CIE <sub>Lab</sub>	53.31, 9.34, 14.45
CIE <sub>LCh</sub>	53, 17.205, 57.122
Yxy	21.3294, 0.3747, 0.3594
Android (android.graphics.Color)	4288182631 (0xFF987967)
YUV	128.2170, -12.4320, 20.8577
Hunter-Lab	46.1838, 5.1144, 12.0743

# Details

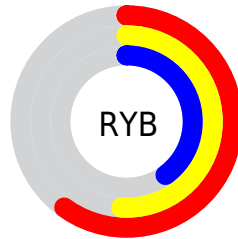
The YUV color  $128.2170, -12.4320, 20.8577$  is a dark color, and the websafe version is hex  $996666$ . A complement of this color would be  $126.7830, 12.4320, -20.8577$ , and the grayscale version is  $128.0000, 0.0000, 0.0000$ .

A 20% lighter version of the original color is  $181.0000, -13.3110, 22.8020$ , and  $78.5480, -11.1162, 18.8134$  is the 20% darker color. If you saturate the color by 10%, you get  $120.6370, -16.0900, 27.5054$ , and if you desaturate by 10%, it is  $135.7970, -8.7739, 14.2100$ .

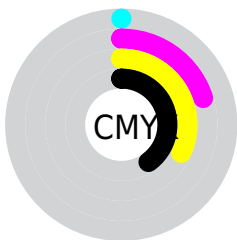
# Distribution



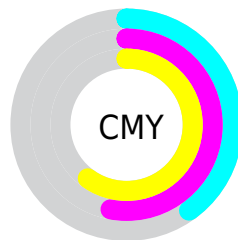
- Red (60%)
- Green (47%)
- Blue (40%)



- Red (60%)
- Yellow (51%)
- Blue (40%)



- Cyan (0%)
- Magenta (20%)
- Yellow (32%)
- Black (40%)



- Cyan (40%)
- Magenta (53%)
- Yellow (60%)

# Brightness & Saturation Gradients

These gradients show how the YUV color 128.2170, -12.4320, 20.8577 changes by changing the brightness by 10 percent. The first figure shows a shift by +10% for each color and the second figure -10%.

Similar to the brightness gradients but the following saturation gradients show a change of the YUV color 128.2170, -12.4320, 20.8577 by changing the saturation by 10% instead.



■ 128.2170,  
-12.4320, 20.8577

■ 128.2170,  
-12.4320, 20.8577

■ 255.0000, 0.0000,  
0.0000

■ 103.0320,  
-11.8478, 20.1429

■ 181.0000,  
-13.3110, 22.8020

■ 78.5480, -11.1162,  
18.8134

■ 209.1850,  
-13.8952, 23.5168

■ 55.6510, -10.6739,  
16.9691

■ 234.4940,  
-12.5685, 17.9838

■ 34.0530, -10.3791,  
15.7395

■ 252.9480, -7.8624,  
1.7996

■ 11.3180, -5.5798,  
16.3841

■ 0.0000, 0.0000,  
0.0000

■ 128.2170,  
-12.4320, 20.8577

■ 128.2170,  
-12.4320, 20.8577

■ 120.6370,  
-16.0900, 27.5054

■ 135.7970, -8.7739,  
14.2100

■ 113.6440,  
-20.0375, 33.6382

■ 142.7900, -4.8265,  
8.0772

■ 105.9500,  
-24.1324, 40.3858

■ 150.4840, -0.7316,  
1.3295

■ 98.9570, -28.0798,  
46.5187

■ 157.4770, 3.2158,  
-4.8033

■ 91.3770, -31.7379,  
53.1664

■ 165.0570, 6.8739,  
-11.4510

■ 83.7970, -35.3959,  
59.8140

■ 172.6370, 10.5320,  
-18.0986

■ 78.3200, -38.6118,  
64.6174

■ 179.6300, 14.4794,  
-24.2315

■ 187.3240, 18.5743,

-30.9791

■ 194.9040, 22.2323,  
-37.6268

# Harmonies

## Analogous

The Analogous color harmony consists of three colors that are next to each other on the color wheel.



129.5040, -7.6435, 24.9910



128.2170, -12.4320, 20.8577



126.9940, -14.2940, 11.4063

# Triad

The Triadic color harmony groups three colors that are evenly spaced from another and form a triangle on the color wheel.



128.2170, -12.4320, 20.8577



121.8890, 1.5337, -25.3357



128.6160, 12.5143, -0.5402

# Complementary

The Complementary color scheme is a pair of colors which are on the opposite of each other on the color wheel.



128.2170, -12.4320, 20.8577



126.7830, 12.4320, -20.8577

# Split Complementary

Split-complementary colors differ from the complementary color scheme. The scheme consists of three colors, the original color and two neighbors of the complement color.



125.9130, 15.3259, -15.7097



128.2170, -12.4320, 20.8577



120.9190, 9.4069, -30.6240

# Square

The Square scheme is like the rectangle color scheme, but the four colors are evenly spaced on the color wheel.



128.2170, -12.4320, 20.8577



123.3050, -6.0664, -14.2995



122.9070, 14.3428, -27.1054



129.6240, 7.0874, 13.4848



# Rectangle

The Rectangle color scheme consists of four colors that form a rectangle on the color wheel.



128.2170, -12.4320, 20.8577



125.8790, -13.2513, 3.6141



122.9070, 14.3428, -27.1054



127.8110, 13.4042, -5.9732

# Sweetspot

The Sweet Spot groups the original color and five complimentary colors.



128.2170, -12.4320, 20.8577



186.7900, -4.8265, 8.0772



121.1850, 6.3178, 27.0248



93.6370, -2.7790, 4.7034



227.0000, 0.0000, 0.0000



99.0000, 0.0000, 0.0000



# Same Dimension

The Same Dimension uses a secret algorithm to generate beautiful new colors.



128.2170, -12.4320, 20.8577



159.1600, -19.3059, 32.3087



142.3050, -19.3774, 8.5025



73.1530, -2.0474, 3.3738



72.3840, -35.6853, 59.2992



6.8220, -3.3632, 5.4181



# Inverse Universe

The Inverse Universe completely reimagines the original color for something new.



126.7830, 12.4320, -20.8577



156.8400, 19.3059, -32.3087



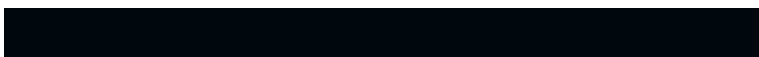
112.6950, 19.3774, -8.5025



72.8470, 2.0474, -3.3738



68.2030, 35.3959, -59.8140

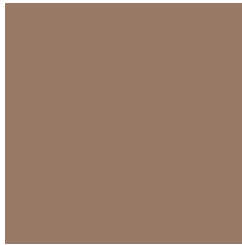


6.1780, 3.3632, -5.4181



# Previews

## White Background



This preview shows how the YUV color 128.2170, -12.4320, 20.8577 looks on a white background.

## Color Contrast Check

Large Text (above 18pt) WCAG AA ✓ Pass

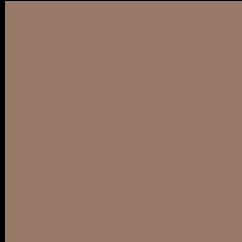
Any Text WCAG AA × Fail

Large Text (above 18pt) WCAG AAA × Fail

Any Text WCAG AAA × Fail



# Black Background



This preview shows how the YUV color 128.2170, -12.4320, 20.8577 looks on a black background.

## Color Contrast Check

Large Text (above 18pt) WCAG AA ✓ Pass

Any Text WCAG AA ✓ Pass

Large Text (above 18pt) WCAG AAA ✓ Pass

Any Text WCAG AAA × Fail

If you want to check with other color combinations, try the [Color Contrast Checker](#).

# YUV 128.2170, -12.4320, 20.8577

## Background



This preview shows how black text looks on a background with the YUV color 128.2170, -12.4320, 20.8577.



This preview shows how white text looks on a background with the YUV color 128.2170, -12.4320,



# Color Blindness Simulation

Color vision deficiency is a very complex topic, and I could not describe the different causes any better than Wikipedia does, so if you want to learn more, you should check out their [article about color blindness](#).

## Dichromacy



### Original Color

128.2170, -12.4320, 20.8577

### Protanopia

126.9980, -10.3520, 7.0178

### Deuteranopia

128.1950, -12.4211, 17.3690



## Tritanopia

130.0890, -1.5229, 21.8469

# Trichromacy



## Original Color

128.2170, -12.4320, 20.8577

## Protanomaly

127.5040, -11.0945, 11.8360

## Deuteranomaly

127.9070, -12.2792, 18.4986

## Tritanomaly

129.3510, -5.5960, 21.6172

# Monochromacy



## Original Color

128.2170, -12.4320, 20.8577

## Achromatopsia

128.0000, 0.0000, 0.0000

## Achromatomaly

127.9040, -4.3897, 7.9772

# CSS Examples

## Text

The CSS property to change the color of the text to YUV 128.2170, -12.4320, 20.8577 is called "color". The color property can be set on classes, ids or directly on the HTML element.

This example shows how text in the color `rgb(152, 121, 103)` looks like.

```
.text, #text, p{  
    color:rgb(152, 121, 103)  
}
```

If you want to add a text shadow in that color use the text-shadow property, you can generate a text shadow directly with our [CSS Text Shadow Generator](#).

Here you see how black text with a 4 pixel rgb(152, 121, 103) colored shadow looks like.

```
.shadow{ text-shadow: 4px 4px 2px rgb(152, 121, 103) }
```

## Border

The CSS property to change the border of an element to YUV 128.2170, -12.4320, 20.8577 is called "border".

The border property can be set on classes, ids or directly on the HTML element.

This example shows the color as border, it can be applied via the CSS property "border" or "border-color".

```
.border, #border, table{ border:4px solid rgb(152, 121, 103) }
```



If only the border color should be changed use the property `border-color`.

```
.border{ border-color:rgb(152, 121, 103) }
```

If you want to add a box shadow in that color use:

Here you see how a box with a 4 pixel `rgb(152, 121, 103)` colored shadow looks like.

```
.boxshadow{ -moz-box-shadow:4px 4px 4px  
4px rgb(152, 121, 103); -webkit-box-  
shadow:4px 4px 4px 4px rgb(152, 121, 103);  
box-shadow:4px 4px 4px 4px rgb(152, 121,  
103) }
```

# Background

The CSS property to change the background color of an element to YUV 128.2170, -12.4320, 20.8577 is called "background". The background property can be set on classes, ids or directly on the HTML element.

```
.background, #background, body{  
background: rgb(152, 121, 103) }
```

If only the background color should be changed can be used:

```
.background{ background-color: rgb(152,  
121, 103) }
```

This example shows the color as background, it is applied via the CSS property "background".

To optimize and compress your CSS code, you can use our [online CSS compressor and optimizer](#) based on csstidy. If you want to create a linear or radial gradient as background or border, check our [CSS Gradient Generator](#).

Hey! You found this booklet interesting? Support Converting Colors with the new Membership Option!

The pro membership hides all ads, plus gives you double the colors in the color bucket, and more awesome pro features!

**[Learn more, Memberships starting at \\$2.50/m!](#)**

**Follow me  
on Twitter!**

@ConvertingColor