

Converting Colors

YUV(128.4270, -20.9165,
35.5825)

Have a look what the booklet for
YUV(128.4270, -20.9165, 35.5825)
contains.

YUV(128.4270, -20.9165, 35.5825)	3
<i>Conversions</i>	4
<i>Details</i>	6
<i>Harmonies</i>	12
<i>Previews</i>	24
<i>Color Blindness Simulation</i>	28
<i>CSS Examples</i>	31

Color

**YUV(128.4270, -20.9165,
35.5825)**

Conversions

Conversions Part 1

Format	Color
Hex	A97456
RGB	169, 116, 86
RGB Percent	66%, 45%, 34%
CMY	0.3373, 0.5451, 0.6627
CMYK	0.00, 0.31, 0.49, 0.34
HSL	22°, 33%, 50%
HSV	22°, 49%, 66%
XYZ	24.2873, 21.5977, 11.6928
YIQ	128.4270, 41.2180, 1.9060

Conversions

Conversions Part 2

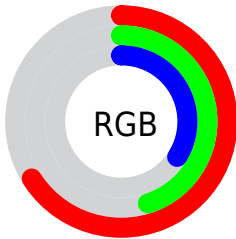
Format	Color
R_{YB}	169, 133, 86
Decimal	11105366
CIE Lab	53.60, 17.30, 24.93
CIE LCh	54, 30.344, 55.249
Yxy	21.5977, 0.4218, 0.3751
Android (android.graphics.Color)	4289295446 (0xFFA97456)
YUV	128.4270, -20.9165, 35.5825
Hunter-Lab	46.4733, 11.9571, 17.6138

Details

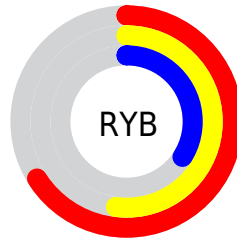
The YUV color **128.4270, -20.9165, 35.5825** is a dark color, and the websafe version is hex **996633**. A complement of this color would be **126.5730, 20.9165, -35.5825**, and the grayscale version is **129.0000, 0.0000, 0.0000**.

A 20% lighter version of the original color is **181.6940, -22.5271, 38.8564**, and **78.5620, -19.0111, 31.0791** is the 20% darker color. If you saturate the color by 10%, you get **120.0320, -25.1588, 42.9449**, and if you desaturate by 10%, it is **136.8220, -16.6742, 28.2201**.

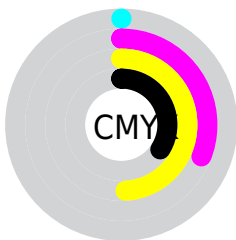
Distribution



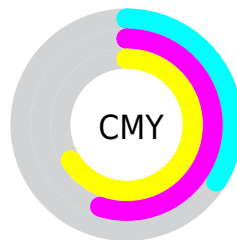
- Red (66%)
- Green (45%)
- Blue (34%)



- Red (66%)
- Yellow (52%)
- Blue (34%)



- Cyan (0%)
- Magenta (31%)
- Yellow (49%)
- Black (34%)



- Cyan (34%)
- Magenta (55%)
- Yellow (66%)

Brightness & Saturation Gradients

These gradients show how the YUV color 128.4270, -20.9165, 35.5825 changes by changing the brightness by 10 percent. The first figure shows a shift by +10% for each color and the second figure -10%.

Similar to the brightness gradients but the following saturation gradients show a change of the YUV color 128.4270, -20.9165, 35.5825 by changing the saturation by 10% instead.

■ 128.4270,
-20.9165, 35.5825

■ 128.4270,
-20.9165, 35.5825

■ 255.0000, 0.0000,
0.0000

■ 102.6440,
-20.0375, 33.6382

■ 181.6940,
-22.5271, 38.8564

■ 78.5620, -19.0111,
31.0791

■ 209.7650,
-23.5481, 39.6711

■ 54.8930, -17.6952,
29.0348

■ 229.3930,
-19.4207, 22.4573

■ 32.3380, -15.9426,
26.8906

■ 248.9070,
-15.7302, 5.3436

■ 11.3620, -5.6015,
23.3615

■ 253.9740, -3.9312,
0.8998

■ 0.0000, 0.0000,
0.0000

■ 128.4270,
-20.9165, 35.5825

■ 128.4270,
-20.9165, 35.5825

■ 120.0320,
-25.1588, 42.9449

■ 136.8220,
-16.6742, 28.2201

■ 111.6370,
-29.4010, 50.3074

■ 145.2170,
-12.4320, 20.8577

■ 103.8290,
-33.9327, 57.1550

■ 153.0250, -7.9003,
14.0101

■ 95.4340, -38.1750,
64.5174

■ 161.4200, -3.6581,
6.6477

■ 87.1530, -41.9804,
71.7798

■ 169.7010, 0.1474,
-0.6148

■ 86.3380, -42.5646,
72.4946

■ 178.0960, 4.3897,
-7.9772

■ 186.4910, 8.6319,
-15.3396

■ 194.2990, 13.1636,

-22.1872

■ 202.6940, 17.4059,
-29.5496

Harmonies

Analogous

The Analogous color harmony consists of three colors that are next to each other on the color wheel.



129.7020, -11.1921, 43.2343



128.4270, -20.9165, 35.5825



126.5900, -24.9409, 19.6536

Triad

The Triadic color harmony groups three colors that are evenly spaced from another and form a triangle on the color wheel.



128.4270, -20.9165, 35.5825



114.7180, 4.0830, -49.7417



129.5260, 22.4187, -3.9693

Complementary

The Complementary color scheme is a pair of colors which are on the opposite of each other on the color wheel.



128.4270, -20.9165, 35.5825



126.5730, 20.9165, -35.5825

Split Complementary

Split-complementary colors differ from the complementary color scheme. The scheme consists of three colors, the original color and two neighbors of the complement color.



122.8210, 28.1892, -34.9230



128.4270, -20.9165, 35.5825



106.6190, 20.8938, -75.0879

Square

The Square scheme is like the rectangle color scheme, but the four colors are evenly spaced on the color wheel.



128.4270, -20.9165, 35.5825



120.1590, -11.4174, -24.6954



111.4490, 28.8656, -65.2918



131.8730, 12.8806, 22.0364

Rectangle

The Rectangle color scheme consists of four colors that form a rectangle on the color wheel.



128.4270, -20.9165, 35.5825



125.1430, -23.7345, 6.0136



111.4490, 28.8656, -65.2918



127.7420, 24.7772, -13.8057

Sweetspot

The Sweet Spot groups the original color and five complimentary colors.



128.4270, -20.9165, 35.5825



202.9110, -8.3371, 14.1101



116.9730, 11.3523, 45.6277



100.0890, -4.9739, 8.6919



237.0000, 0.0000, 0.0000



110.0000, 0.0000, 0.0000

Same Dimension

The Same Dimension uses a secret algorithm to generate beautiful new colors.



128.4270, -20.9165, 35.5825



156.1600, -32.6169, 55.1107



152.4940, -32.7815, 14.4758



80.1530, -2.0474, 3.3738



75.3630, -37.1540, 63.7026



10.0890, -4.9739, 8.6919

Inverse Universe

The Inverse Universe completely reimagines the original color for something new.



126.5730, 20.9165, -35.5825



153.4270, 32.3275, -55.6255



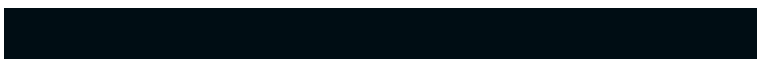
102.5060, 32.7815, -14.4758



79.8470, 2.0474, -3.3738



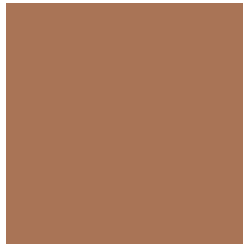
72.0500, 37.4434, -63.1878



9.9110, 4.9739, -8.6919

Previews

White Background



This preview shows how the YUV color 128.4270, -20.9165, 35.5825 looks on a white background.

Color Contrast Check

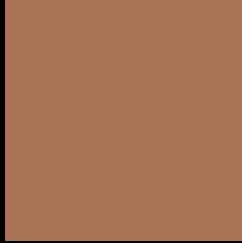
Large Text (above 18pt) WCAG AA ✓ Pass

Any Text WCAG AA × Fail

Large Text (above 18pt) WCAG AAA × Fail

Any Text WCAG AAA × Fail

Black Background



This preview shows how the YUV color 128.4270, -20.9165, 35.5825 looks on a black background.

Color Contrast Check

Large Text (above 18pt) WCAG AA ✓ Pass

Any Text WCAG AA ✓ Pass

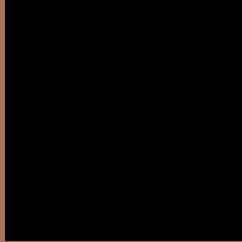
Large Text (above 18pt) WCAG AAA ✓ Pass

Any Text WCAG AAA × Fail

If you want to check with other color combinations, try the [Color Contrast Checker](#).

YUV 128.4270, -20.9165, 35.5825

Background



This preview shows how black text looks on a background with the YUV color 128.4270, -20.9165, 35.5825.



This preview shows how white text looks on a background with the YUV color 128.4270, -20.9165,

35.5825.

Color Blindness Simulation

Color vision deficiency is a very complex topic, and I could not describe the different causes any better than Wikipedia does, so if you want to learn more, you should check out their [article about color blindness](#).

Dichromacy



Original Color

128.4270, -20.9165, 35.5825

Protanopia

126.7720, -17.6356, 9.8470

Deuteranopia

127.9370, -21.1679, 22.8573



Tritanopia

130.8520, -5.3500, 36.0868

Trichromacy



Original Color

128.4270, -20.9165, 35.5825

Protanomaly

127.4850, -18.9731, 18.8687

Deuteranomaly

127.6710, -21.0368, 27.4755

Tritanomaly

129.7720, -10.7336, 36.1570

Monochromacy



Original Color

128.4270, -20.9165, 35.5825

Achromatopsia

128.0000, 0.0000, 0.0000

Achromatomaly

128.4270, -7.6055, 12.7805

CSS Examples

Text

The CSS property to change the color of the text to YUV 128.4270, -20.9165, 35.5825 is called "color". The color property can be set on classes, ids or directly on the HTML element.

This example shows how text in the color `rgb(169, 116, 86)` looks like.

```
.text, #text, p{  
    color:rgb(169, 116, 86)  
}
```

If you want to add a text shadow in that color use the text-shadow property, you can generate a text shadow directly with our [CSS Text Shadow Generator](#).

Here you see how black text with a 4 pixel rgb(169, 116, 86) colored shadow looks like.

```
.shadow{ text-shadow: 4px 4px 2px rgb(169, 116, 86) }
```

Border

The CSS property to change the border of an element to YUV 128.4270, -20.9165, 35.5825 is called "border".

The border property can be set on classes, ids or directly on the HTML element.

This example shows the color as border, it can be applied via the CSS property "border" or "border-color".

```
.border, #border, table{ border:4px solid rgb(169, 116, 86) }
```


If only the border color should be changed use the property border-color.

```
.border{ border-color:rgb(169, 116, 86) }
```

If you want to add a box shadow in that color use:

Here you see how a box with a 4 pixel rgb(169, 116, 86) colored shadow looks like.

```
.boxshadow{ -moz-box-shadow:4px 4px 4px  
4px rgb(169, 116, 86); -webkit-box-  
shadow:4px 4px 4px 4px rgb(169, 116, 86);  
box-shadow:4px 4px 4px 4px rgb(169, 116,  
86) }
```

Background

The CSS property to change the background color of an element to YUV 128.4270, -20.9165, 35.5825 is called "background". The background property can be set on classes, ids or directly on the HTML element.

```
.background, #background, body{  
background: rgb(169, 116, 86) }
```

If only the background color should be changed can be used:

```
.background{ background-color: rgb(169,  
116, 86) }
```

This example shows the color as background, it is applied via the CSS property "background".

To optimize and compress your CSS code, you can use our [online CSS compressor and optimizer](#) based on csstidy. If you want to create a linear or radial gradient as background or border, check our [CSS Gradient Generator](#).

Hey! You found this booklet interesting? Support Converting Colors with the new Membership Option!

The pro membership hides all ads, plus gives you double the colors in the color bucket, and more awesome pro features!

[Learn more, Memberships starting at \\$2.50/m!](#)

**Follow me
on Twitter!**

@ConvertingColor