

Converting Colors

YUV(128.7190, -17.1165,
30.0644)

Have a look what the booklet for
YUV(128.7190, -17.1165, 30.0644)
contains.

YUV(128.7190, -17.1165, 30.0644)	3
<i>Conversions</i>	4
<i>Details</i>	6
<i>Harmonies</i>	12
<i>Previews</i>	24
<i>Color Blindness Simulation</i>	28
<i>CSS Examples</i>	31

Color

**YUV(128.7190, -17.1165,
30.0644)**

Conversions

Conversions Part 1

Format	Color
Hex	A3765E
RGB	163, 118, 94
RGB Percent	64%, 46%, 37%
CMY	0.3608, 0.5373, 0.6314
CMYK	0.00, 0.28, 0.42, 0.36
HSL	21°, 27%, 50%
HSV	21°, 42%, 64%
XYZ	23.6031, 21.5515, 13.5055
YIQ	128.7190, 34.5240, 2.0760

Conversions

Conversions Part 2

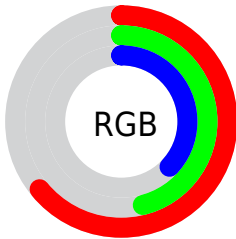
Format	Color
R_{YB}	163, 131, 94
Decimal	10712670
CIE _{Lab}	53.55, 14.50, 20.17
CIE _{LCh}	54, 24.840, 54.281
Yxy	21.5515, 0.4024, 0.3674
Android (android.graphics.Color)	4288902750 (0xFFA3765E)
YUV	128.7190, -17.1165, 30.0644
Hunter-Lab	46.4236, 9.5130, 15.2480

Details

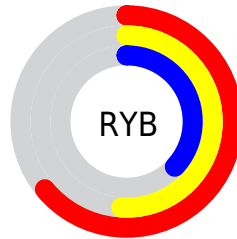
The YUV color **128.7190, -17.1165, 30.0644** is a dark color, and the websafe version is hex **996666**. A complement of this color would be **128.2810, 17.1165, -30.0644**, and the grayscale version is **129.0000, 0.0000, 0.0000**.

A 20% lighter version of the original color is **181.8010, -18.1429, 32.6235**, and **78.5660, -15.0690, 26.6906** is the 20% darker color. If you saturate the color by 10%, you get **120.4380, -20.9219, 37.3269**, and if you desaturate by 10%, it is **137.0000, -13.3110, 22.8020**.

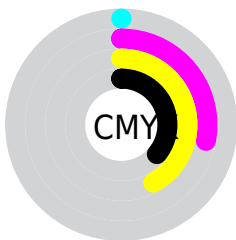
Distribution



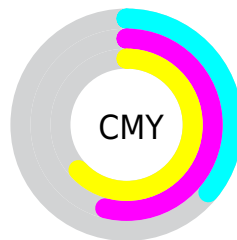
- Red (64%)
- Green (46%)
- Blue (37%)



- Red (64%)
- Yellow (51%)
- Blue (37%)



- Cyan (0%)
- Magenta (28%)
- Yellow (42%)
- Black (36%)



- Cyan (36%)
- Magenta (54%)
- Yellow (63%)

Brightness & Saturation Gradients

These gradients show how the YUV color 128.7190, -17.1165, 30.0644 changes by changing the brightness by 10 percent. The first figure shows a shift by +10% for each color and the second figure -10%.

Similar to the brightness gradients but the following saturation gradients show a change of the YUV color 128.7190, -17.1165, 30.0644 by changing the saturation by 10% instead.

■ 128.7190,
-17.1165, 30.0644

■ 128.7190,
-17.1165, 30.0644

■ 255.0000, 0.0000,
0.0000

■ 103.2350,
-16.3849, 28.7349

■ 181.8010,
-18.1429, 32.6235

■ 78.5660, -15.0690,
26.6906

■ 210.1710,
-19.3113, 34.0530

■ 55.3700, -14.4794,
24.2315

■ 231.4790,
-16.5051, 20.6279

■ 33.0170, -15.7844,
22.7871

■ 251.2210,
-11.9410, 3.3142

■ 11.3510, -5.5960,
21.6172

■ 0.0000, 0.0000,
0.0000

■ 128.7190,
-17.1165, 30.0644

■ 128.7190,
-17.1165, 30.0644

■ 120.4380,
-20.9219, 37.3269

■ 137.0000,
-13.3110, 22.8020

■ 112.6300,
-25.4536, 44.1745

■ 144.8080, -8.7793,
15.9544

■ 104.3490,
-29.2591, 51.4369

■ 153.0890, -4.9739,
8.6919

■ 96.0680, -33.0645,
58.6994

■ 161.3700, -1.1684,
1.4295

■ 88.3740, -37.1594,
65.4470

■ 169.1780, 3.3632,
-5.4181

■ 82.1960, -40.5226,
70.8651

■ 177.4590, 7.1687,
-12.6805

■ 185.1530, 11.2636,
-19.4282

■ 193.4340, 15.0690,

-26.6906

■ 201.8290, 19.3113,
-34.0530

Harmonies

Analogous

The Analogous color harmony consists of three colors that are next to each other on the color wheel.



130.1140, -9.4232, 35.8570



128.7190, -17.1165, 30.0644



127.0180, -20.7149, 17.5242

Triad

The Triadic color harmony groups three colors that are evenly spaced from another and form a triangle on the color wheel.



128.7190, -17.1165, 30.0644



118.3390, 2.2979, -37.1313



129.2010, 18.6349, -3.6843

Complementary

The Complementary color scheme is a pair of colors which are on the opposite of each other on the color wheel.



128.7190, -17.1165, 30.0644



128.2810, 17.1165, -30.0644

Split Complementary

Split-complementary colors differ from the complementary color scheme. The scheme consists of three colors, the original color and two neighbors of the complement color.



124.3830, 22.4892, -26.6459



128.7190, -17.1165, 30.0644



115.7640, 14.4133, -49.7820

Square

The Square scheme is like the rectangle color scheme, but the four colors are evenly spaced on the color wheel.



128.7190, -17.1165, 30.0644



121.9470, -9.8339, -19.2475



118.6210, 21.3858, -46.1486



131.2700, 10.7129, 17.3032

Rectangle

The Rectangle color scheme consists of four colors that form a rectangle on the color wheel.



128.7190, -17.1165, 30.0644



125.8810, -19.6613, 6.2434



118.6210, 21.3858, -46.1486



127.6130, 20.4038, -11.0616

Sweetspot

The Sweet Spot groups the original color and five complimentary colors.



128.7190, -17.1165, 30.0644



198.2420, -7.0213, 12.0658



119.8750, 9.9216, 37.8206



98.6050, -4.2423, 7.3624



235.0000, 0.0000, 0.0000



107.0000, 0.0000, 0.0000

Same Dimension

The Same Dimension uses a secret algorithm to generate beautiful new colors.



128.7190, -17.1165, 30.0644



158.0110, -26.6274, 47.3484



148.0900, -26.6664, 13.0761



77.4520, -2.1948, 3.9886



73.2920, -36.1330, 62.8879



8.9040, -4.3897, 7.9772

Inverse Universe

The Inverse Universe completely reimagines the original color for something new.



128.2810, 17.1165, -30.0644



157.4020, 26.9168, -46.8336



108.9100, 26.6664, -13.0761



77.5480, 2.1948, -3.9886



72.2950, 35.8436, -63.4027



9.0960, 4.3897, -7.9772

Previews

White Background



This preview shows how the YUV color 128.7190, -17.1165, 30.0644 looks on a white background.

Color Contrast Check

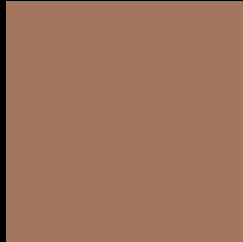
Large Text (above 18pt) WCAG AA ✓ Pass

Any Text WCAG AA × Fail

Large Text (above 18pt) WCAG AAA × Fail

Any Text WCAG AAA × Fail

Black Background



This preview shows how the YUV color 128.7190, -17.1165, 30.0644 looks on a black background.

Color Contrast Check

Large Text (above 18pt) WCAG AA ✓ Pass

Any Text WCAG AA ✓ Pass

Large Text (above 18pt) WCAG AAA ✓ Pass

Any Text WCAG AAA × Fail

If you want to check with other color combinations, try the [Color Contrast Checker](#).

YUV 128.7190, -17.1165, 30.0644 Background



This preview shows how black text looks on a background with the YUV color 128.7190, -17.1165, 30.0644.



This preview shows how white text looks on a background with the YUV color 128.7190, -17.1165, 30.0644.

Color Blindness Simulation

Color vision deficiency is a very complex topic, and I could not describe the different causes any better than Wikipedia does, so if you want to learn more, you should check out their [article about color blindness](#).

Dichromacy



Original Color

128.7190, -17.1165, 30.0644

Protanopia

127.2710, -14.4306, 8.5323

Deuteranopia

128.2510, -17.3787, 20.8279



Tritanopia

130.5740, -3.7340, 31.0686

Trichromacy



Original Color

128.7190, -17.1165, 30.0644

Protanomaly

127.5000, -15.0365, 16.2245

Deuteranomaly

128.2730, -17.3896, 24.3166

Tritanomaly

129.6080, -8.6807, 31.0388

Monochromacy



Original Color

128.7190, -17.1165, 30.0644

Achromatopsia

129.0000, 0.0000, 0.0000

Achromatomaly

128.7580, -6.2897, 10.7362

CSS Examples

Text

The CSS property to change the color of the text to YUV 128.7190, -17.1165, 30.0644 is called "color". The color property can be set on classes, ids or directly on the HTML element.

This example shows how text in the color `rgb(163, 118, 94)` looks like.

```
.text, #text, p{  
    color:rgb(163, 118, 94)  
}
```

If you want to add a text shadow in that color use the text-shadow property, you can generate a text shadow directly with our [CSS Text Shadow Generator](#).

Here you see how black text with a 4 pixel rgb(163, 118, 94) colored shadow looks like.

```
.shadow{ text-shadow: 4px 4px 2px rgb(163, 118, 94) }
```

Border

The CSS property to change the border of an element to YUV 128.7190, -17.1165, 30.0644 is called "border".

The border property can be set on classes, ids or directly on the HTML element.

This example shows the color as border, it can be applied via the CSS property "border" or "border-color".

```
.border, #border, table{ border:4px solid rgb(163, 118, 94) }
```


If only the border color should be changed use the property border-color.

```
.border{ border-color:rgb(163, 118, 94) }
```

If you want to add a box shadow in that color use:

Here you see how a box with a 4 pixel rgb(163, 118, 94) colored shadow looks like.

```
.boxshadow{ -moz-box-shadow:4px 4px 4px  
4px rgb(163, 118, 94); -webkit-box-  
shadow:4px 4px 4px 4px rgb(163, 118, 94);  
box-shadow:4px 4px 4px 4px rgb(163, 118,  
94) }
```

Background

The CSS property to change the background color of an element to YUV 128.7190, -17.1165, 30.0644 is called "background". The background property can be set on classes, ids or directly on the HTML element.

```
.background, #background, body{  
background: rgb(163, 118, 94) }
```

If only the background color should be changed can be used:

```
.background{ background-color: rgb(163,  
118, 94) }
```

This example shows the color as background, it is applied via the CSS property "background".

To optimize and compress your CSS code, you can use our [online CSS compressor and optimizer](#) based on csstidy. If you want to create a linear or radial gradient as background or border, check our [CSS Gradient Generator](#).

Hey! You found this booklet interesting? Support Converting Colors with the new Membership Option!

The pro membership hides all ads, plus gives you double the colors in the color bucket, and more awesome pro features!

[Learn more, Memberships starting at \\$2.50/m!](#)

**Follow me
on Twitter!**

@ConvertingColor