

Converting Colors

YUV(128.8190, -22.0958,
40.5007)

Have a look what the booklet for
YUV(128.8190, -22.0958, 40.5007)
contains.

YUV(128.8190, -22.0958, 40.5007)	3
<i>Conversions</i>	4
<i>Details</i>	6
<i>Harmonies</i>	12
<i>Previews</i>	24
<i>Color Blindness Simulation</i>	28
<i>CSS Examples</i>	31

Color

**YUV(128.8190, -22.0958,
40.5007)**

Conversions

Conversions Part 1

Format	Color
Hex	AF7254
RGB	175, 114, 84
RGB Percent	69%, 45%, 33%
CMY	0.3137, 0.5529, 0.6706
CMYK	0.00, 0.35, 0.52, 0.31
HSL	20°, 36%, 51%
HSV	20°, 52%, 69%
XYZ	25.2967, 21.7887, 11.2599
YIQ	128.8190, 45.9860, 3.6020

Conversions

Conversions Part 2

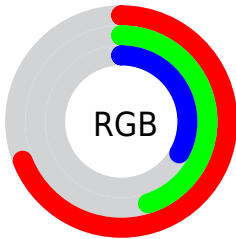
Format	Color
R_{YB}	175, 129, 84
Decimal	11498068
CIE _{Lab}	53.80, 20.75, 26.47
CIE _{LCh}	54, 33.636, 51.908
Yxy	21.7887, 0.4336, 0.3734
Android (android.graphics.Color)	4289688148 (0xFFAF7254)
YUV	128.8190, -22.0958, 40.5007
Hunter-Lab	46.6783, 15.0487, 18.3728

Details

The YUV color **128.8190, -22.0958, 40.5007** is a dark color, and the websafe version is hex **996633**. A complement of this color would be **130.1810, 22.0958, -40.5007**, and the grayscale version is **129.0000, 0.0000, 0.0000**.

A 20% lighter version of the original color is **182.3850, -23.8538, 44.3894**, and **78.0680, -19.7535, 35.8974** is the 20% darker color. If you saturate the color by 10%, you get **119.8370, -26.0486, 48.3780**, and if you desaturate by 10%, it is **137.9150, -17.7061, 32.5235**.

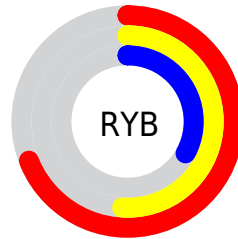
Distribution



Red (69%)

Green (45%)

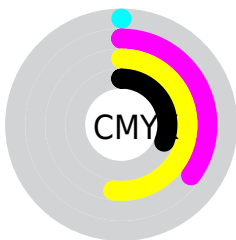
Blue (33%)



Red (69%)

Yellow (51%)

Blue (33%)

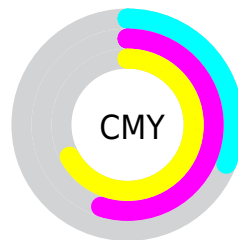


Cyan (0%)

Magenta (35%)

Yellow (52%)

Black (31%)



Cyan (31%)

Magenta (55%)

Yellow (67%)

Brightness & Saturation Gradients

These gradients show how the YUV color 128.8190, -22.0958, 40.5007 changes by changing the brightness by 10 percent. The first figure shows a shift by +10% for each color and the second figure -10%.

Similar to the brightness gradients but the following saturation gradients show a change of the YUV color 128.8190, -22.0958, 40.5007 by changing the saturation by 10% instead.

■ 128.8190,
-22.0958, 40.5007

■ 128.8190,
-22.0958, 40.5007

■ 255.0000, 0.0000,
0.0000

■ 103.1500,
-20.7800, 38.4564

■ 182.3850,
-23.8538, 44.3894

■ 78.0680, -19.7535,
35.8974

■ 208.3630,
-23.8430, 40.9006

■ 54.6870, -18.5797,
32.7235

■ 227.8770,
-20.1524, 23.7869

■ 32.3600, -15.9535,
30.3793

■ 247.5050,
-16.0250, 6.5731

■ 12.5580, -6.1911,
25.8206

■ 253.7460, -4.8048,
1.0998

■ 0.0000, 0.0000,
0.0000

■ 128.8190,
-22.0958, 40.5007

■ 128.8190,
-22.0958, 40.5007

■ 119.8370,
-26.0486, 48.3780

■ 137.9150,
-17.7061, 32.5235

■ 111.3280,
-30.7277, 55.8403

■ 146.3100,
-13.4638, 25.1611

■ 102.3460,
-34.6806, 63.7176

■ 155.4060, -9.0742,
17.1839

■ 93.2500, -39.0703,
71.6947

■ 164.3880, -5.1213,
9.3067

■ 86.3710, -42.5809,
77.7276

■ 173.3700, -1.1684,
1.4295

■ 181.8790, 3.5107,
-6.0329

■ 190.9750, 7.9003,
-14.0101

■ 199.9570, 11.8532,

-21.8873

■ 209.0530, 16.2429,
-29.8645

Harmonies

Analogous

The Analogous color harmony consists of three colors that are next to each other on the color wheel.



130.4360, -11.0609, 47.8526



128.8190, -22.0958, 40.5007



126.9280, -27.5725, 23.7421

Triad

The Triadic color harmony groups three colors that are evenly spaced from another and form a triangle on the color wheel.



128.8190, -22.0958, 40.5007



112.4570, 3.2257, -54.7748



129.4160, 25.9239, -8.2578

Complementary

The Complementary color scheme is a pair of colors which are on the opposite of each other on the color wheel.



128.8190, -22.0958, 40.5007



130.1810, 22.0958, -40.5007

Split Complementary

Split-complementary colors differ from the complementary color scheme. The scheme consists of three colors, the original color and two neighbors of the complement color.



120.4930, 32.2950, -45.1594



128.8190, -22.0958, 40.5007



101.5140, 23.4106, -89.0278

Square

The Square scheme is like the rectangle color scheme, but the four colors are evenly spaced on the color wheel.



128.8190, -22.0958, 40.5007



120.1760, -13.8908, -24.7104



102.4890, 34.7619, -89.8829



132.0840, 16.2276, 21.8513

Rectangle

The Rectangle color scheme consists of four colors that form a rectangle on the color wheel.



128.8190, -22.0958, 40.5007



125.6550, -26.9449, 9.0726



102.4890, 34.7619, -89.8829



127.3220, 28.4353, -20.4534

Sweetspot

The Sweet Spot groups the original color and five complimentary colors.



128.8190, -22.0958, 40.5007



208.8080, -8.7793, 15.9544



118.2770, 13.6674, 49.7461



103.6870, -5.2687, 9.9215



242.0000, 0.0000, 0.0000



115.0000, 0.0000, 0.0000

Same Dimension

The Same Dimension uses a secret algorithm to generate beautiful new colors.



128.8190, -22.0958, 40.5007



155.7480, -34.3858, 62.4880



154.6470, -34.8290, 17.8496



82.4520, -2.1948, 3.9886



74.2000, -36.5806, 66.4766



11.5730, -5.7055, 10.0215

Inverse Universe

The Inverse Universe completely reimagines the original color for something new.



130.1810, 22.0958, -40.5007



157.8390, 34.0964, -63.0028



104.3530, 34.8290, -17.8496



82.5480, 2.1948, -3.9886



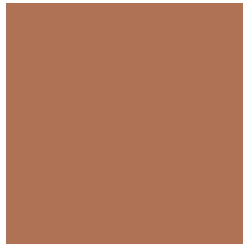
76.3870, 36.2912, -66.9914



11.4270, 5.7055, -10.0215

Previews

White Background



This preview shows how the YUV color 128.8190, -22.0958, 40.5007 looks on a white background.

Color Contrast Check

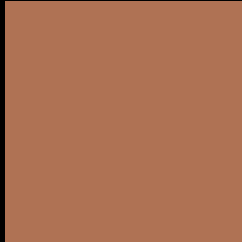
Large Text (above 18pt) WCAG AA ✓ Pass

Any Text WCAG AA × Fail

Large Text (above 18pt) WCAG AAA × Fail

Any Text WCAG AAA × Fail

Black Background



This preview shows how the YUV color 128.8190, -22.0958, 40.5007 looks on a black background.

Color Contrast Check

Large Text (above 18pt) WCAG AA ✓ Pass

Any Text WCAG AA ✓ Pass

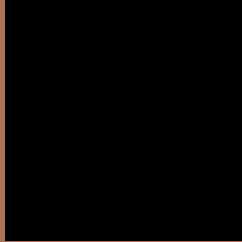
Large Text (above 18pt) WCAG AAA ✓ Pass

Any Text WCAG AAA × Fail

If you want to check with other color combinations, try the [Color Contrast Checker](#).

YUV 128.8190, -22.0958, 40.5007

Background



This preview shows how black text looks on a background with the YUV color 128.8190, -22.0958, 40.5007.



This preview shows how white text looks on a background with the YUV color 128.8190, -22.0958,

Color Blindness Simulation

Color vision deficiency is a very complex topic, and I could not describe the different causes any better than Wikipedia does, so if you want to learn more, you should check out their [article about color blindness](#).

Dichromacy



Original Color

128.8190, -22.0958, 40.5007

Protanopia

127.5440, -18.5092, 10.0469

Deuteranopia

127.8940, -22.6257, 23.7720



Tritanopia

131.2440, -6.5293, 41.0050

Trichromacy



Original Color

128.8190, -22.0958, 40.5007

Protanomaly

128.2680, -19.8521, 20.8130

Deuteranomaly

128.3400, -22.3526, 29.5198

Tritanomaly

130.1640, -11.9129, 41.0752

Monochromacy



Original Color

128.8190, -22.0958, 40.5007

Achromatopsia

129.0000, 0.0000, 0.0000

Achromatomaly

129.3240, -8.0477, 14.6249

CSS Examples

Text

The CSS property to change the color of the text to YUV 128.8190, -22.0958, 40.5007 is called "color". The color property can be set on classes, ids or directly on the HTML element.

This example shows how text in the color `rgb(175, 114, 84)` looks like.

```
.text, #text, p{  
    color:rgb(175, 114, 84)  
}
```

If you want to add a text shadow in that color use the text-shadow property, you can generate a text shadow directly with our [CSS Text Shadow Generator](#).

Here you see how black text with a 4 pixel rgb(175, 114, 84) colored shadow looks like.

```
.shadow{ text-shadow: 4px 4px 2px rgb(175, 114, 84) }
```

Border

The CSS property to change the border of an element to YUV 128.8190, -22.0958, 40.5007 is called "border".

The border property can be set on classes, ids or directly on the HTML element.

This example shows the color as border, it can be applied via the CSS property "border" or "border-color".

```
.border, #border, table{ border:4px solid rgb(175, 114, 84) }
```


If only the border color should be changed use the property `border-color`.

```
.border{ border-color:rgb(175, 114, 84) }
```

If you want to add a box shadow in that color use:

Here you see how a box with a 4 pixel `rgb(175, 114, 84)` colored shadow looks like.

```
.boxshadow{ -moz-box-shadow:4px 4px 4px  
4px rgb(175, 114, 84); -webkit-box-  
shadow:4px 4px 4px 4px rgb(175, 114, 84);  
box-shadow:4px 4px 4px 4px rgb(175, 114,  
84) }
```

Background

The CSS property to change the background color of an element to YUV 128.8190, -22.0958, 40.5007 is called "background". The background property can be set on classes, ids or directly on the HTML element.

```
.background, #background, body{  
background: rgb(175, 114, 84) }
```

If only the background color should be changed can be used:

```
.background{ background-color: rgb(175,  
114, 84) }
```

This example shows the color as background, it is applied via the CSS property "background".

To optimize and compress your CSS code, you can use our [online CSS compressor and optimizer](#) based on csstidy. If you want to create a linear or radial gradient as background or border, check our [CSS Gradient Generator](#).

Hey! You found this booklet interesting? Support Converting Colors with the new Membership Option!

The pro membership hides all ads, plus gives you double the colors in the color bucket, and more awesome pro features!

[Learn more, Memberships starting at \\$2.50/m!](#)

**Follow me
on Twitter!**

@ConvertingColor