

Converting Colors

YUV(129.6980, -18.5851,
34.4679)

Have a look what the booklet for
YUV(129.6980, -18.5851, 34.4679)
contains.

YUV(129.6980, -18.5851, 34.4679)	3
<i>Conversions</i>	4
<i>Details</i>	6
<i>Harmonies</i>	12
<i>Previews</i>	24
<i>Color Blindness Simulation</i>	28
<i>CSS Examples</i>	31

Color

**YUV(129.6980, -18.5851,
34.4679)**

Conversions

Conversions Part 1

Format	Color
Hex	A9755C
RGB	169, 117, 92
RGB Percent	66%, 46%, 36%
CMY	0.3373, 0.5412, 0.6392
CMYK	0.00, 0.31, 0.46, 0.34
HSL	19°, 31%, 51%
HSV	19°, 46%, 66%
XYZ	24.6552, 21.9303, 13.0587
YIQ	129.6980, 39.0170, 3.2490

Conversions

Conversions Part 2

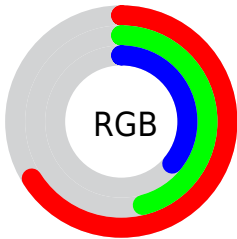
Format	Color
R_{YB}	169, 129, 92
Decimal	11105628
CIE Lab	53.95, 17.36, 21.98
CIE LCh	54, 28.006, 51.699
Yxy	21.9303, 0.4134, 0.3677
Android (android.graphics.Color)	4289295708 (0xFFA9755C)
YUV	129.6980, -18.5851, 34.4679
Hunter-Lab	46.8298, 12.0256, 16.2476

Details

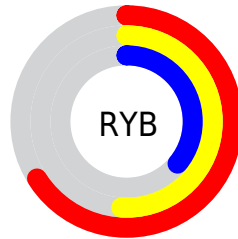
The YUV color **129.6980, -18.5851, 34.4679** is a dark color, and the websafe version is hex **996666**. A complement of this color would be **131.3020, 18.5851, -34.4679**, and the grayscale version is **130.0000, 0.0000, 0.0000**.

A 20% lighter version of the original color is **182.9650, -20.1957, 37.7417**, and **79.2460, -16.3903, 30.4793** is the 20% darker color. If you saturate the color by 10%, you get **121.3030, -22.8274, 41.8303**, and if you desaturate by 10%, it is **138.0930, -14.3428, 27.1054**.

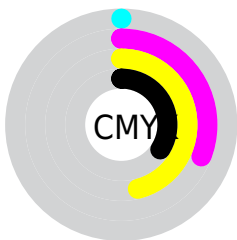
Distribution



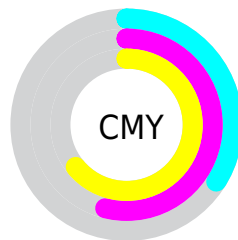
- Red (66%)
- Green (46%)
- Blue (36%)



- Red (66%)
- Yellow (51%)
- Blue (36%)



- Cyan (0%)
- Magenta (31%)
- Yellow (46%)
- Black (34%)



- Cyan (34%)
- Magenta (54%)
- Yellow (64%)

Brightness & Saturation Gradients

These gradients show how the YUV color 129.6980, -18.5851, 34.4679 changes by changing the brightness by 10 percent. The first figure shows a shift by +10% for each color and the second figure -10%.

Similar to the brightness gradients but the following saturation gradients show a change of the YUV color 129.6980, -18.5851, 34.4679 by changing the saturation by 10% instead.

■ 129.6980,
-18.5851, 34.4679

■ 129.6980,
-18.5851, 34.4679

■ 255.0000, 0.0000,
0.0000

■ 103.9150,
-17.7061, 32.5235

■ 182.9650,
-20.1957, 37.7417

■ 79.2460, -16.3903,
30.4793

■ 211.1500,
-20.7799, 38.4565

■ 56.0500, -15.8006,
28.0202

■ 230.6640,
-17.0894, 21.3427

■ 32.9250, -16.2320,
26.3758

■ 250.2920,
-12.9620, 4.1289

■ 11.6610, -5.7489,
23.9763

■ 254.7720, -0.8736,
0.2000

■ 0.0000, 0.0000,
0.0000

■ 129.6980,
-18.5851, 34.4679

■ 129.6980,
-18.5851, 34.4679

■ 121.3030,
-22.8274, 41.8303

■ 138.0930,
-14.3428, 27.1054

■ 112.3210,
-26.7803, 49.7075

■ 147.0750,
-10.3900, 19.2282

■ 103.9260,
-31.0225, 57.0699

■ 155.4700, -6.1477,
11.8658

■ 94.9440, -34.9754,
64.9471

■ 164.4520, -2.1948,
3.9886

■ 86.5490, -39.2177,
72.3095

■ 172.7330, 1.6106,
-3.2738

■ 82.8160, -40.8283,
75.5834

■ 181.1280, 5.8529,
-10.6363

■ 190.1100, 9.8058,
-18.5135

■ 198.5050, 14.0480,

-25.8759

■ 207.4870, 18.0009,
-33.7531

Harmonies

Analogous

The Analogous color harmony consists of three colors that are next to each other on the color wheel.



130.8480, -9.2921, 40.4753



129.6980, -18.5851, 34.4679



127.7580, -23.0517, 20.3832

Triad

The Triadic color harmony groups three colors that are evenly spaced from another and form a triangle on the color wheel.



129.6980, -18.5851, 34.4679



118.0780, 1.4405, -42.1644



129.9880, 21.6979, -6.1285

Complementary

The Complementary color scheme is a pair of colors which are on the opposite of each other on the color wheel.



129.6980, -18.5851, 34.4679



131.3020, 18.5851, -34.4679

Split Complementary

Split-complementary colors differ from the complementary color scheme. The scheme consists of three colors, the original color and two neighbors of the complement color.



123.5500, 25.8579, -33.8083



129.6980, -18.5851, 34.4679



113.1540, 16.1931, -60.6481

Square

The Square scheme is like the rectangle color scheme, but the four colors are evenly spaced on the color wheel.



129.6980, -18.5851, 34.4679



122.6650, -12.1598, -19.8772



115.4670, 24.9128, -57.4146



132.5520, 13.0389, 17.9329

Rectangle

The Rectangle color scheme consists of four colors that form a rectangle on the color wheel.



129.6980, -18.5851, 34.4679



126.7950, -22.5769, 8.0728



115.4670, 24.9128, -57.4146



128.0900, 23.6196, -15.8649

Sweetspot

The Sweet Spot groups the original color and five complimentary colors.



129.6980, -18.5851, 34.4679



203.8400, -7.3161, 13.2953



121.0650, 11.8000, 42.0390



100.2030, -4.5371, 8.5920



237.0000, 0.0000, 0.0000



110.0000, 0.0000, 0.0000

Same Dimension

The Same Dimension uses a secret algorithm to generate beautiful new colors.



129.6980, -18.5851, 34.4679



157.7730, -28.9751, 53.6961



152.0040, -29.5820, 14.9055



79.5660, -1.7580, 3.8886



72.4280, -35.7070, 66.2766



10.0890, -4.9739, 8.6919

Inverse Universe

The Inverse Universe completely reimagines the original color for something new.



131.3020, 18.5851, -34.4679



160.2270, 28.9751, -53.6961



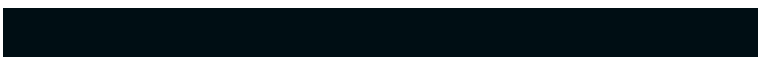
108.9960, 29.5820, -14.9055



79.8470, 2.0474, -3.3738



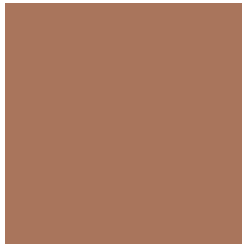
75.5720, 35.7070, -66.2766



10.4980, 4.6845, -9.2067

Previews

White Background



This preview shows how the YUV color 129.6980, -18.5851, 34.4679 looks on a white background.

Color Contrast Check

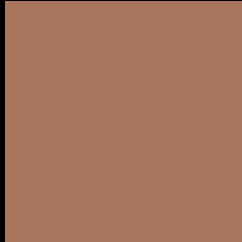
Large Text (above 18pt) WCAG AA ✓ Pass

Any Text WCAG AA × Fail

Large Text (above 18pt) WCAG AAA × Fail

Any Text WCAG AAA × Fail

Black Background



This preview shows how the YUV color 129.6980, -18.5851, 34.4679 looks on a black background.

Color Contrast Check

Large Text (above 18pt) WCAG AA ✓ Pass

Any Text WCAG AA ✓ Pass

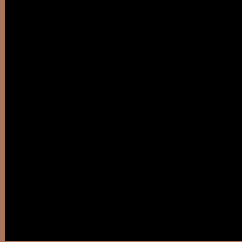
Large Text (above 18pt) WCAG AAA ✓ Pass

Any Text WCAG AAA × Fail

If you want to check with other color combinations, try the [Color Contrast Checker](#).

YUV 129.6980, -18.5851, 34.4679

Background



This preview shows how black text looks on a background with the YUV color 129.6980, -18.5851, 34.4679.



This preview shows how white text looks on a background with the YUV color 129.6980, -18.5851,

34.4679.

Color Blindness Simulation

Color vision deficiency is a very complex topic, and I could not describe the different causes any better than Wikipedia does, so if you want to learn more, you should check out their [article about color blindness](#).

Dichromacy



Original Color

129.6980, -18.5851, 34.4679

Protanopia

128.0430, -15.3042, 8.7323

Deuteranopia

129.2080, -18.8365, 21.7426



Tritanopia

131.6670, -4.7658, 35.3720

Trichromacy



Original Color

129.6980, -18.5851, 34.4679

Protanomaly

128.7560, -16.6417, 17.7540

Deuteranomaly

128.9420, -18.7054, 26.3609

Tritanomaly

130.7010, -9.7126, 35.3422

Monochromacy



Original Color

129.6980, -18.5851, 34.4679

Achromatopsia

130.0000, 0.0000, 0.0000

Achromatomaly

129.6550, -6.7319, 12.5806

CSS Examples

Text

The CSS property to change the color of the text to YUV 129.6980, -18.5851, 34.4679 is called "color". The color property can be set on classes, ids or directly on the HTML element.

This example shows how text in the color `rgb(169, 117, 92)` looks like.

```
.text, #text, p{  
    color:rgb(169, 117, 92)  
}
```

If you want to add a text shadow in that color use the text-shadow property, you can generate a text shadow directly with our [CSS Text Shadow Generator](#).

Here you see how black text with a 4 pixel rgb(169, 117, 92) colored shadow looks like.

```
.shadow{ text-shadow: 4px 4px 2px rgb(169, 117, 92) }
```

Border

The CSS property to change the border of an element to YUV 129.6980, -18.5851, 34.4679 is called "border".

The border property can be set on classes, ids or directly on the HTML element.

This example shows the color as border, it can be applied via the CSS property "border" or "border-color".

```
.border, #border, table{ border:4px solid rgb(169, 117, 92) }
```


If only the border color should be changed use the property `border-color`.

```
.border{ border-color:rgb(169, 117, 92) }
```

If you want to add a box shadow in that color use:

Here you see how a box with a 4 pixel `rgb(169, 117, 92)` colored shadow looks like.

```
.boxshadow{ -moz-box-shadow:4px 4px 4px  
4px rgb(169, 117, 92); -webkit-box-  
shadow:4px 4px 4px 4px rgb(169, 117, 92);  
box-shadow:4px 4px 4px 4px rgb(169, 117,  
92) }
```

Background

The CSS property to change the background color of an element to YUV 129.6980, -18.5851, 34.4679 is called "background". The background property can be set on classes, ids or directly on the HTML element.

```
.background, #background, body{  
background: rgb(169, 117, 92) }
```

If only the background color should be changed can be used:

```
.background{ background-color: rgb(169,  
117, 92) }
```

This example shows the color as background, it is applied via the CSS property "background".

To optimize and compress your CSS code, you can use our [online CSS compressor and optimizer](#) based on csstidy. If you want to create a linear or radial gradient as background or border, check our [CSS Gradient Generator](#).

Hey! You found this booklet interesting? Support Converting Colors with the new Membership Option!

The pro membership hides all ads, plus gives you double the colors in the color bucket, and more awesome pro features!

[Learn more, Memberships starting at \\$2.50/m!](#)

**Follow me
on Twitter!**

@ConvertingColor