

Converting Colors

YUV(129.8360, -11.2581,
17.6838)

Have a look what the booklet for
YUV(129.8360, -11.2581, 17.6838)
contains.

YUV(129.8360, -11.2581, 17.6838)	3
<i>Conversions</i>	4
<i>Details</i>	6
<i>Harmonies</i>	12
<i>Previews</i>	24
<i>Color Blindness Simulation</i>	28
<i>CSS Examples</i>	31

Color

**YUV(129.8360, -11.2581,
17.6838)**

Conversions

Conversions Part 1

Format	Color
Hex	967C6B
RGB	150, 124, 107
RGB Percent	59%, 49%, 42%
CMY	0.4118, 0.5137, 0.5804
CMYK	0.00, 0.17, 0.29, 0.41
HSL	24°, 17%, 50%
HSV	24°, 29%, 59%
XYZ	22.4392, 21.9609, 16.9661
YIQ	129.8360, 20.9530, 0.2250

Conversions

Conversions Part 2

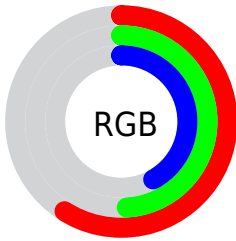
Format	Color
R_{YB}	150, 135, 107
Decimal	9862251
CIE _{Lab}	53.99, 7.36, 13.04
CIE _{LCh}	54, 14.977, 60.553
Yxy	21.9609, 0.3657, 0.3579
Android (android.graphics.Color)	4288052331 (0xFF967C6B)
YUV	129.8360, -11.2581, 17.6838
Hunter-Lab	46.8624, 3.4620, 11.3383

Details

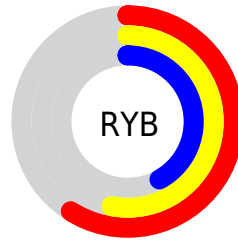
The YUV color **129.8360, -11.2581, 17.6838** is a dark color, and the websafe version is hex **996666**. A complement of this color would be **127.1640, 11.2581, -17.6838**, and the grayscale version is **130.0000, 0.0000, 0.0000**.

A 20% lighter version of the original color is **183.2060, -12.4266, 19.1133**, and **80.1670, -9.9423, 15.6395** is the 20% darker color. If you saturate the color by 10%, you get **122.8430, -15.2056, 23.8167**, and if you desaturate by 10%, it is **136.8290, -7.3107, 11.5510**.

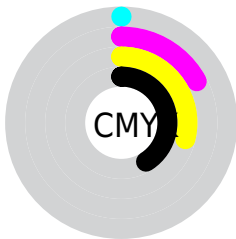
Distribution



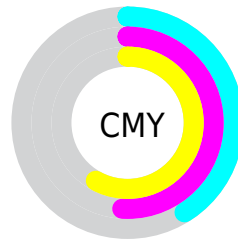
- Red (59%)
- Green (49%)
- Blue (42%)



- Red (59%)
- Yellow (53%)
- Blue (42%)



- Cyan (0%)
- Magenta (17%)
- Yellow (29%)
- Black (41%)



- Cyan (41%)
- Magenta (51%)
- Yellow (58%)

Brightness & Saturation Gradients

These gradients show how the YUV color 129.8360, -11.2581, 17.6838 changes by changing the brightness by 10 percent. The first figure shows a shift by +10% for each color and the second figure -10%.

Similar to the brightness gradients but the following saturation gradients show a change of the YUV color 129.8360, -11.2581, 17.6838 by changing the saturation by 10% instead.

■ 129.8360,
-11.2581, 17.6838

■ 129.8360,
-11.2581, 17.6838

■ 255.0000, 0.0000,
0.0000

■ 104.6510,
-10.6739, 16.9691

■ 183.2060,
-12.4266, 19.1133

■ 80.1670, -9.9423,
15.6395

■ 210.5050,
-12.5740, 19.7281

■ 57.5690, -9.6475,
14.4100

■ 236.7110,
-11.6895, 16.0395

■ 35.0850, -8.9159,
13.0805

■ 253.4040, -6.1152,
1.3997

■ 13.6660, -6.7373,
14.3249

■ 0.0000, 0.0000,
0.0000

■ 129.8360,
-11.2581, 17.6838

■ 129.8360,
-11.2581, 17.6838

■ 122.8430,
-15.2056, 23.8167

■ 136.8290, -7.3107,
11.5510

■ 115.8500,
-19.1531, 29.9495

■ 143.8220, -3.3632,
5.4181

■ 108.8570,
-23.1005, 36.0824

■ 150.8150, 0.5842,
-0.7148

■ 101.8640,
-27.0480, 42.2153

■ 157.8080, 4.5317,
-6.8476

■ 94.8710, -30.9954,
48.3481

■ 164.8010, 8.4791,
-12.9805

■ 87.8780, -34.9429,
54.4810

■ 171.7940, 12.4266,
-19.1133

■ 80.8850, -38.8903,
60.6139

■ 178.7870, 16.3740,
-25.2462

■ 79.4830, -39.1851,

■ 186.3670, 20.0321,

61.8434

-31.8939

■ 193.3600, 23.9795,
-38.0267

Harmonies

Analogous

The Analogous color harmony consists of three colors that are next to each other on the color wheel.



130.8950, -7.3432, 22.0171



129.8360, -11.2581, 17.6838



128.4390, -12.5414, 9.2620

Triad

The Triadic color harmony groups three colors that are evenly spaced from another and form a triangle on the color wheel.



129.8360, -11.2581, 17.6838



124.4270, 2.2545, -23.1765



130.6440, 10.0355, 1.1892

Complementary

The Complementary color scheme is a pair of colors which are on the opposite of each other on the color wheel.



129.8360, -11.2581, 17.6838



127.1640, 11.2581, -17.6838

Split Complementary

Split-complementary colors differ from the complementary color scheme. The scheme consists of three colors, the original color and two neighbors of the complement color.



128.3650, 13.1311, -11.7211



129.8360, -11.2581, 17.6838



124.1260, 8.8119, -26.4205

Square

The Square scheme is like the rectangle color scheme, but the four colors are evenly spaced on the color wheel.



129.8360, -11.2581, 17.6838



125.3590, -4.6140, -13.4698



125.7720, 12.4374, -22.6020



131.4560, 5.1982, 12.7551

Rectangle

The Rectangle color scheme consists of four colors that form a rectangle on the color wheel.



129.8360, -11.2581, 17.6838



127.7370, -11.2093, 1.9847



125.7720, 12.4374, -22.6020



129.6650, 11.5042, -3.2142

Sweetspot

The Sweet Spot groups the original color and five complimentary colors.



129.8360, -11.2581, 17.6838



185.4910, -4.6791, 7.4624



122.9350, 5.4550, 23.7360



91.6370, -2.7790, 4.7034



224.0000, 0.0000, 0.0000



97.0000, 0.0000, 0.0000

Same Dimension

The Same Dimension uses a secret algorithm to generate beautiful new colors.



129.8360, -11.2581, 17.6838



162.9960, -17.2530, 27.1905



142.1630, -17.3354, 6.8730



70.2670, -1.6106, 3.2738



72.9600, -35.9693, 57.0401



5.3380, -2.6316, 4.0886

Inverse Universe

The Inverse Universe completely reimagines the original color for something new.



127.1640, 11.2581, -17.6838



159.0040, 17.2530, -27.1905



114.8370, 17.3354, -6.8730



70.1460, 1.9000, -2.7590



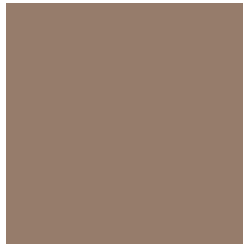
64.4530, 36.2587, -56.5253



4.6620, 2.6316, -4.0886

Previews

White Background



This preview shows how the YUV color 129.8360, -11.2581, 17.6838 looks on a white background.

Color Contrast Check

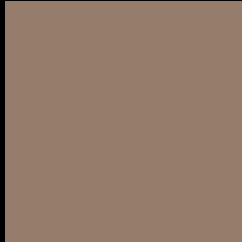
Large Text (above 18pt) WCAG AA ✓ Pass

Any Text WCAG AA × Fail

Large Text (above 18pt) WCAG AAA × Fail

Any Text WCAG AAA × Fail

Black Background



This preview shows how the YUV color 129.8360, -11.2581, 17.6838 looks on a black background.

Color Contrast Check

Large Text (above 18pt) WCAG AA ✓ Pass

Any Text WCAG AA ✓ Pass

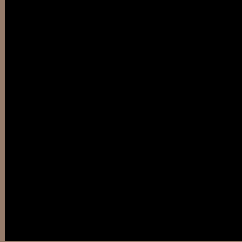
Large Text (above 18pt) WCAG AAA ✓ Pass

Any Text WCAG AAA × Fail

If you want to check with other color combinations, try the [Color Contrast Checker](#).

YUV 129.8360, -11.2581, 17.6838

Background



This preview shows how black text looks on a background with the YUV color 129.8360, -11.2581, 17.6838.



This preview shows how white text looks on a background with the YUV color 129.8360, -11.2581, 17.6838.

17.6838.

Color Blindness Simulation

Color vision deficiency is a very complex topic, and I could not describe the different causes any better than Wikipedia does, so if you want to learn more, you should check out their [article about color blindness](#).

Dichromacy



Original Color

129.8360, -11.2581, 17.6838

Protanopia

128.8130, -9.7678, 6.3030

Deuteranopia

129.5370, -11.1107, 17.0691



Tritanopia

131.5940, -0.7858, 18.7731

Trichromacy



Original Color

129.8360, -11.2581, 17.6838

Protanomaly

129.0200, -10.3629, 10.5065

Deuteranomaly

129.5370, -11.1107, 17.0691

Tritanomaly

130.9700, -4.4222, 18.4433

Monochromacy



Original Color

129.8360, -11.2581, 17.6838

Achromatopsia

130.0000, 0.0000, 0.0000

Achromatomaly

130.0070, -3.9475, 6.1329

CSS Examples

Text

The CSS property to change the color of the text to YUV 129.8360, -11.2581, 17.6838 is called "color". The color property can be set on classes, ids or directly on the HTML element.

This example shows how text in the color `rgb(150, 124, 107)` looks like.

```
.text, #text, p{  
    color:rgb(150, 124, 107)  
}
```

If you want to add a text shadow in that color use the text-shadow property, you can generate a text shadow directly with our [CSS Text Shadow Generator](#).

Here you see how black text with a 4 pixel rgb(150, 124, 107) colored shadow looks like.

```
.shadow{ text-shadow: 4px 4px 2px rgb(150, 124, 107) }
```

Border

The CSS property to change the border of an element to YUV 129.8360, -11.2581, 17.6838 is called "border".

The border property can be set on classes, ids or directly on the HTML element.

This example shows the color as border, it can be applied via the CSS property "border" or "border-color".

```
.border, #border, table{ border:4px solid rgb(150, 124, 107) }
```


If only the border color should be changed use the property `border-color`.

```
.border{ border-color:rgb(150, 124, 107) }
```

If you want to add a box shadow in that color use:

Here you see how a box with a 4 pixel `rgb(150, 124, 107)` colored shadow looks like.

```
.boxshadow{ -moz-box-shadow:4px 4px 4px  
4px rgb(150, 124, 107); -webkit-box-  
shadow:4px 4px 4px 4px rgb(150, 124, 107);  
box-shadow:4px 4px 4px 4px rgb(150, 124,  
107) }
```

Background

The CSS property to change the background color of an element to YUV 129.8360, -11.2581, 17.6838 is called "background". The background property can be set on classes, ids or directly on the HTML element.

```
.background, #background, body{  
background: rgb(150, 124, 107) }
```

If only the background color should be changed can be used:

```
.background{ background-color: rgb(150,  
124, 107) }
```

This example shows the color as background, it is applied via the CSS property "background".

To optimize and compress your CSS code, you can use our [online CSS compressor and optimizer](#) based on csstidy. If you want to create a linear or radial gradient as background or border, check our [CSS Gradient Generator](#).

Hey! You found this booklet interesting? Support Converting Colors with the new Membership Option!

The pro membership hides all ads, plus gives you double the colors in the color bucket, and more awesome pro features!

[Learn more, Memberships starting at \\$2.50/m!](#)

**Follow me
on Twitter!**

@ConvertingColor