

Converting Colors

YUV(129.9470, 1.0121, 95.6395)

Have a look what the booklet for
YUV(129.9470, 1.0121, 95.6395)
contains.

YUV(129.9470, 1.0121, 95.6395)	3
<i>Conversions</i>	4
<i>Details</i>	6
<i>Harmonies</i>	12
<i>Previews</i>	24
<i>Color Blindness Simulation</i>	28
<i>CSS Examples</i>	31

Color

**YUV(129.9470, 1.0121,
95.6395)**

Conversions

Conversions Part 1

Format	Color
Hex	EF4A84
RGB	239, 74, 132
RGB Percent	94%, 29%, 52%
CMY	0.0627, 0.7098, 0.4824
CMYK	0.00, 0.69, 0.45, 0.06
HSL	339°, 84%, 61%
HSV	339°, 69%, 94%
XYZ	42.2102, 24.9142, 24.4140
YIQ	129.9470, 79.7220, 53.0180

Conversions

Conversions Part 2

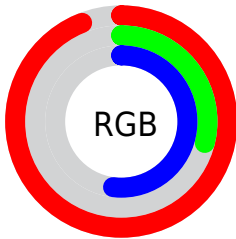
Format	Color
R_{YB}	239, 74, 132
Decimal	15682180
CIE _{Lab}	56.99, 66.85, 4.34
CIE _{LCh}	57, 66.994, 3.718
Yxy	24.9142, 0.4611, 0.2722
Android (android.graphics.Color)	4293872260 (0xFFEF4A84)
YUV	129.9470, 1.0121, 95.6395
Hunter-Lab	49.9142, 63.6000, 5.9400

Details

The YUV color **129.9470, 1.0121, 95.6395** is a dark color, and the websafe version is hex **FF6699**. The color can be described as middle muted rose. A complement of this color would be **183.0530, -1.0121, -95.6395**, and the grayscale version is **130.0000, 0.0000, 0.0000**.

A 20% lighter version of the original color is **175.4060, 4.7298, 69.8039**, and **62.6840, 10.0158, 101.1321** is the 20% darker color. If you saturate the color by 10%, you get **114.1490, 1.4055, 109.4943**, and if you desaturate by 10%, it is **145.7450, 0.6187, 81.7846**.

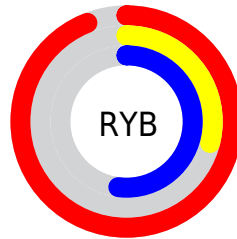
Distribution



Red (94%)

Green (29%)

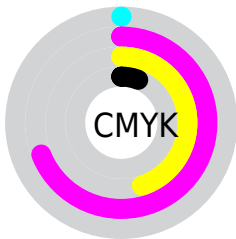
Blue (52%)



Red (94%)

Yellow (29%)

Blue (52%)

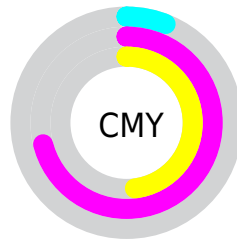


Cyan (0%)

Magenta (69%)

Yellow (45%)

Black (6%)



Cyan (6%)

Magenta (71%)

Yellow (48%)

Brightness & Saturation Gradients

These gradients show how the YUV color 129.9470, 1.0121, 95.6395 changes by changing the brightness by 10 percent. The first figure shows a shift by +10% for each color and the second figure -10%.

Similar to the brightness gradients but the following saturation gradients show a change of the YUV color 129.9470, 1.0121, 95.6395 by changing the saturation by 10% instead.

129.9470, 1.0121,
95.6395

129.9470, 1.0121,
95.6395

255.0000, 0.0000,
0.0000

97.8700, 4.5011,
96.5840

175.4060, 4.7298,
69.8039

62.6840, 10.0158,
101.1321

195.5070, 8.1310,
52.1754

50.7930, 4.5391,
84.3735

215.8360, 12.4059,
34.3468

39.7280, -0.3589,
68.6445

234.4550, 10.1287,
18.0180

28.3640, -5.1095,
52.3008

252.0650, 1.4470,
2.5740

18.2820, -7.5340,
36.5867

6.8770, -3.3904,

14.1399

■ 0.0000, 0.0000,
0.0000

■ 129.9470, 1.0121,
95.6395

■ 129.9470, 1.0121,
95.6395

■ 114.1490, 1.4055,
109.4943

■ 145.7450, 0.6187,
81.7846

■ 98.2370, 1.3622,
123.4492

■ 161.6570, 0.6621,
67.8298

■ 82.4390, 1.7556,
137.3040

■ 177.4550, 0.2687,
53.9750

■ 81.0370, 1.4608,
138.5336

■ 193.3670, 0.3121,
40.0201

■ 209.1650, -0.0813,
26.1653

224.4900, 0.2514,
12.7253

240.2880, -0.1420,
-1.1296

250.2160, 2.3585,
-9.8364

Harmonies

Analogous

The Analogous color harmony consists of three colors that are next to each other on the color wheel.



137.2910, 25.9855, 65.5198



129.9470, 1.0121, 95.6395



130.1720, -27.1998, 91.0572

Triad

The Triadic color harmony groups three colors that are evenly spaced from another and form a triangle on the color wheel.



129.9470, 1.0121, 95.6395



120.7350, -48.6764, -20.8156



119.0460, 60.1233, -104.4033

Complementary

The Complementary color scheme is a pair of colors which are on the opposite of each other on the color wheel.



129.9470, 1.0121, 95.6395



183.0530, -1.0121, -95.6395

Split Complementary

Split-complementary colors differ from the complementary color scheme. The scheme consists of three colors, the original color and two neighbors of the complement color.



118.4810, 40.1889, -103.9078



129.9470, 1.0121, 95.6395



103.2680, -10.4851, -90.5660

Square

The Square scheme is like the rectangle color scheme, but the four colors are evenly spaced on the color wheel.



129.9470, 1.0121, 95.6395



127.3620, -62.7895, 25.9925



111.9830, 15.2914, -98.2091



112.3100, 69.8532, -98.4959

Rectangle

The Rectangle color scheme consists of four colors that form a rectangle on the color wheel.



129.9470, 1.0121, 95.6395



130.7790, -44.7540, 74.7388



111.9830, 15.2914, -98.2091



119.5530, 54.4504, -104.8480

Sweetspot

The Sweet Spot groups the original color and five complimentary colors.



129.9470, 1.0121, 95.6395



219.3120, 0.3392, 31.2984



124.2050, 56.5939, 48.0552



106.8220, 0.0878, 18.5731



0.0000, 0.0000, 0.0000



128.0000, 0.0000, 0.0000

Same Dimension

The Same Dimension uses a secret algorithm to generate beautiful new colors.



129.9470, 1.0121, 95.6395



114.9380, 1.5096, 122.8344



136.2490, -30.6888, 90.1126



112.0440, -0.0217, 6.9774



62.4260, 1.2690, 106.6204



19.0240, 0.4812, 32.4280

Inverse Universe

The Inverse Universe completely reimagines the original color for something new.



129.9470, 1.0121, 95.6395



114.9380, 1.5096, 122.8344



176.7510, 30.6888, -90.1126



112.0440, -0.0217, 6.9774



62.4260, 1.2690, 106.6204



19.0240, 0.4812, 32.4280

Previews

White Background



This preview shows how the YUV color 129.9470, 1.0121, 95.6395 looks on a white background.

Color Contrast Check

Large Text (above 18pt) WCAG AA ✓ Pass

Any Text WCAG AA ✗ Fail

Large Text (above 18pt) WCAG AAA ✗ Fail

Any Text WCAG AAA ✗ Fail

Black Background



This preview shows how the YUV color 129.9470, 1.0121, 95.6395 looks on a black background.

Color Contrast Check

Large Text (above 18pt) WCAG AA ✓ Pass

Any Text WCAG AA ✓ Pass

Large Text (above 18pt) WCAG AAA ✓ Pass

Any Text WCAG AAA × Fail

If you want to check with other color combinations, try the [Color Contrast Checker](#).

YUV 129.9470, 1.0121, 95.6395

Background



This preview shows how black text looks on a background with the YUV color 129.9470, 1.0121, 95.6395.



This preview shows how white text looks on a background with the YUV color 129.9470, 1.0121,

95.6395.

Color Blindness Simulation

Color vision deficiency is a very complex topic, and I could not describe the different causes any better than Wikipedia does, so if you want to learn more, you should check out their [article about color blindness](#).

Dichromacy



Original Color

129.9470, 1.0121, 95.6395

Protanopia

137.8540, 14.8620, -6.8880

Deuteranopia

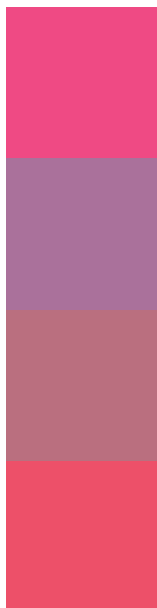
137.9650, -6.8847, 14.9397



Tritanopia

130.0180, -20.2219, 92.9462

Trichromacy



Original Color

129.9470, 1.0121, 95.6395

Protanomaly

134.8310, 9.9433, 30.8432

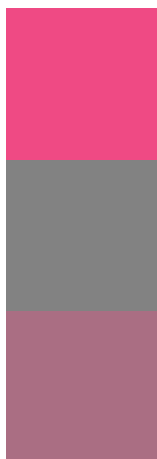
Deuteranomaly

135.2490, -4.0668, 44.5086

Tritanomaly

129.7930, -12.2229, 94.0205

Monochromacy



Original Color

129.9470, 1.0121, 95.6395

Achromatopsia

130.0000, 0.0000, 0.0000

Achromatomaly

130.3340, 0.3283, 34.7871

CSS Examples

Text

The CSS property to change the color of the text to YUV 129.9470, 1.0121, 95.6395 is called "color". The color property can be set on classes, ids or directly on the HTML element.

This example shows how text in the color `rgb(239, 74, 132)` looks like.

```
.text, #text, p{  
    color:rgb(239, 74, 132)  
}
```

If you want to add a text shadow in that color use the text-shadow property, you can generate a text shadow directly with our [CSS Text Shadow Generator](#).

Here you see how black text with a 4 pixel rgb(239, 74, 132) colored shadow looks like.

```
.shadow{ text-shadow: 4px 4px 2px rgb(239, 74, 132) }
```

Border

The CSS property to change the border of an element to YUV 129.9470, 1.0121, 95.6395 is called "border". The border property can be set on classes, ids or directly on the HTML element.

This example shows the color as border, it can be applied via the CSS property "border" or "border-color".

```
.border, #border, table{ border:4px solid rgb(239, 74, 132) }
```


If only the border color should be changed use the property `border-color`.

```
.border{ border-color:rgb(239, 74, 132) }
```

If you want to add a box shadow in that color use:

Here you see how a box with a 4 pixel `rgb(239, 74, 132)` colored shadow looks like.

```
.boxshadow{ -moz-box-shadow:4px 4px 4px  
4px rgb(239, 74, 132); -webkit-box-  
shadow:4px 4px 4px 4px rgb(239, 74, 132);  
box-shadow:4px 4px 4px 4px rgb(239, 74,  
132) }
```

Background

The CSS property to change the background color of an element to YUV 129.9470, 1.0121, 95.6395 is called "background". The background property can be set on classes, ids or directly on the HTML element.

```
.background, #background, body{  
background: rgb(239, 74, 132) }
```

If only the background color should be changed can be used:

```
.background{ background-color: rgb(239, 74,  
132) }
```

This example shows the color as background, it is applied via the CSS property "background".

To optimize and compress your CSS code, you can use our [online CSS compressor and optimizer](#) based on csstidy. If you want to create a linear or radial gradient as background or border, check our [CSS Gradient Generator](#).

Hey! You found this booklet interesting? Support Converting Colors with the new Membership Option!

The pro membership hides all ads, plus gives you double the colors in the color bucket, and more awesome pro features!

[Learn more, Memberships starting at \\$2.50/m!](#)

**Follow me
on Twitter!**

@ConvertingColor