

# Converting Colors

YUV(130.0870, 1.9291, 81.4847)

Have a look what the booklet for  
YUV(130.0870, 1.9291, 81.4847)  
contains.

<b>YUV(130.0870, 1.9291, 81.4847)</b> .....	3
<b><i>Conversions</i></b> .....	4
<b><i>Details</i></b> .....	6
<b><i>Harmonies</i></b> .....	12
<b><i>Previews</i></b> .....	24
<b><i>Color Blindness Simulation</i></b> .....	28
<b><i>CSS Examples</i></b> .....	31

# Color

**YUV(130.0870, 1.9291,  
81.4847)**

# Conversions

## Conversions Part 1

<b>Format</b>	<b>Color</b>
Hex	DF5286
RGB	223, 82, 134
RGB Percent	87%, 32%, 53%
CMY	0.1255, 0.6784, 0.4745
CMYK	0.00, 0.63, 0.40, 0.13
HSL	338°, 69%, 60%
HSV	338°, 63%, 87%
XYZ	37.7518, 23.4438, 25.0896
YIQ	130.0870, 67.3440, 46.0640

# Conversions

## Conversions Part 2

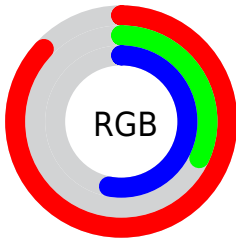
<b>Format</b>	<b>Color</b>
<b>R<sub>YB</sub></b>	223, 82, 134
Decimal	14635654
CIE Lab	55.53, 59.23, 0.71
CIE LCh	56, 59.239, 0.684
Yxy	23.4438, 0.4375, 0.2717
Android (android.graphics.Color)	4292825734 (0xFFDF5286)
YUV	130.0870, 1.9291, 81.4847
Hunter-Lab	48.4188, 54.4423, 3.1703

# Details

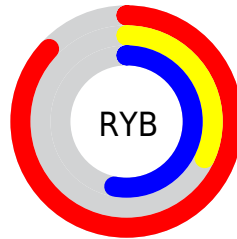
The YUV color **130.0870, 1.9291, 81.4847** is a dark color, and the websafe version is hex **FF6699**. The color can be described as middle muted rose. A complement of this color would be **174.9130, -1.9291, -81.4847**, and the grayscale version is **130.0000, 0.0000, 0.0000**.

A 20% lighter version of the original color is **178.5690, 4.1565, 67.0300**, and **66.6450, 9.0490, 84.5033** is the 20% darker color. If you saturate the color by 10%, you get **115.5770, 2.1805, 94.2100**, and if you desaturate by 10%, it is **144.5970, 1.6777, 68.7594**.

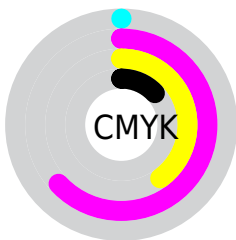
# Distribution



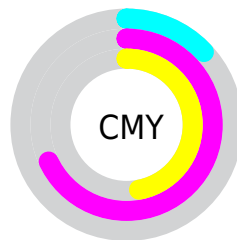
- Red (87%)
- Green (32%)
- Blue (53%)



- Red (87%)
- Yellow (32%)
- Blue (53%)



- Cyan (0%)
- Magenta (63%)
- Yellow (40%)
- Black (13%)



- Cyan (13%)
- Magenta (68%)
- Yellow (47%)

# Brightness & Saturation Gradients

These gradients show how the YUV color 130.0870, 1.9291, 81.4847 changes by changing the brightness by 10 percent. The first figure shows a shift by +10% for each color and the second figure -10%.

Similar to the brightness gradients but the following saturation gradients show a change of the YUV color 130.0870, 1.9291, 81.4847 by changing the saturation by 10% instead.



130.0870, 1.9291,  
81.4847

130.0870, 1.9291,  
81.4847

255.0000, 0.0000,  
0.0000

100.6570, 4.1131,  
80.9848

178.5690, 4.1565,  
67.0300

66.6450, 9.0490,  
84.5033

198.7840, 7.9945,  
49.3014

47.1340, 7.3289,  
76.1815

218.4120, 12.1219,  
32.0877

35.9550, 1.9942,  
60.5525

236.8030, 8.9711,  
15.9588

25.3030, -2.6144,  
45.3383

254.4130, 0.2894,  
0.5148

15.1780, -6.4968,  
30.5389

0.0000, 0.0000,

0.0000

■ 130.0870, 1.9291,  
81.4847

■ 130.0870, 1.9291,  
81.4847

■ 115.5770, 2.1805,  
94.2100

■ 144.5970, 1.6777,  
68.7594

■ 100.4800, 2.7214,  
107.4500

■ 159.6940, 1.1369,  
55.5194

■ 85.9700, 2.9728,  
120.1753

■ 174.2040, 0.8854,  
42.7941

■ 76.0250, 2.9457,  
128.8971

■ 188.7140, 0.6340,  
30.0688

■ 203.8110, 0.0932,  
16.8288

■ 218.3210, -0.1583,  
4.1035

■ 232.9450, 0.0271,  
-8.7218

■ 244.5200, 1.2226,  
-18.8730

■ 245.4320, 4.7170,  
-19.6729

# Harmonies

## Analogous

The Analogous color harmony consists of three colors that are next to each other on the color wheel.



135.9320, 23.6975, 52.6796



130.0870, 1.9291, 81.4847



128.7840, -22.0785, 81.7504

# Triad

The Triadic color harmony groups three colors that are evenly spaced from another and form a triangle on the color wheel.



130.0870, 1.9291, 81.4847



120.6850, -42.7357, -12.8787



113.9450, 53.2711, -99.9298

# Complementary

The Complementary color scheme is a pair of colors which are on the opposite of each other on the color wheel.



130.0870, 1.9291, 81.4847



174.9130, -1.9291, -81.4847

# Split Complementary

Split-complementary colors differ from the complementary color scheme. The scheme consists of three colors, the original color and two neighbors of the complement color.



112.5480, 35.2258, -98.7046



130.0870, 1.9291, 81.4847



98.9310, -9.3330, -86.7625

# Square

The Square scheme is like the rectangle color scheme, but the four colors are evenly spaced on the color wheel.



130.0870, 1.9291, 81.4847



124.7520, -57.5587, 28.2815



107.3210, 12.6597, -94.1205



108.4970, 62.8590, -95.1519



# Rectangle

The Rectangle color scheme consists of four colors that form a rectangle on the color wheel.



130.0870, 1.9291, 81.4847



129.0970, -37.0228, 68.3209



107.3210, 12.6597, -94.1205



114.5660, 48.0350, -100.4744

# Sweetspot

The Sweet Spot groups the original color and five complimentary colors.



130.0870, 1.9291, 81.4847



223.2900, 0.3500, 27.8097



124.0870, 48.7641, 39.3887



108.2240, 0.3826, 17.3436



0.0000, 0.0000, 0.0000



128.0000, 0.0000, 0.0000



# Same Dimension

The Same Dimension uses a secret algorithm to generate beautiful new colors.



130.0870, 1.9291, 81.4847



127.2140, 2.8525, 112.0683



133.5510, -25.4146, 78.4468



104.7450, 0.1257, 6.3626



60.0340, 2.4482, 101.7022



16.4040, 0.7868, 27.7097



# Inverse Universe

The Inverse Universe completely reimagines the original color for something new.



130.0870, 1.9291, 81.4847



127.2140, 2.8525, 112.0683



171.4490, 25.4146, -78.4468



104.7450, 0.1257, 6.3626



60.0340, 2.4482, 101.7022

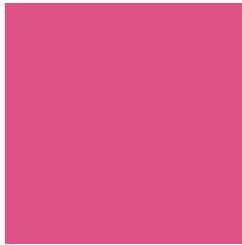


16.4040, 0.7868, 27.7097



# Previews

## White Background



This preview shows how the YUV color 130.0870, 1.9291, 81.4847 looks on a white background.

## Color Contrast Check

Large Text (above 18pt) WCAG AA ✓ Pass

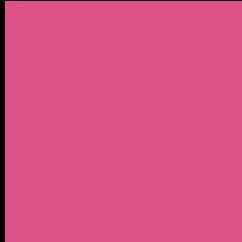
Any Text WCAG AA × Fail

Large Text (above 18pt) WCAG AAA × Fail

Any Text WCAG AAA × Fail



# Black Background



This preview shows how the YUV color 130.0870, 1.9291, 81.4847 looks on a black background.

## Color Contrast Check

Large Text (above 18pt) WCAG AA ✓ Pass

Any Text WCAG AA ✓ Pass

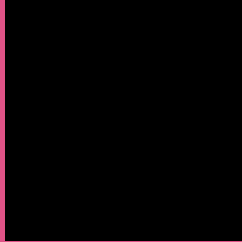
Large Text (above 18pt) WCAG AAA ✓ Pass

Any Text WCAG AAA × Fail

If you want to check with other color combinations, try the [Color Contrast Checker](#).

# YUV 130.0870, 1.9291, 81.4847

## Background



This preview shows how black text looks on a background with the YUV color 130.0870, 1.9291, 81.4847.



This preview shows how white text looks on a background with the YUV color 130.0870, 1.9291,



# Color Blindness Simulation

Color vision deficiency is a very complex topic, and I could not describe the different causes any better than Wikipedia does, so if you want to learn more, you should check out their [article about color blindness](#).

## Dichromacy



### Original Color

130.0870, 1.9291, 81.4847

### Protanopia

133.9680, 15.2988, -6.9879

### Deuteranopia

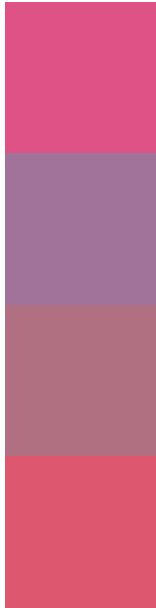
134.7520, -3.8217, 12.4955



## Tritanopia

129.5540, -16.5421, 79.3211

# Trichromacy



## Original Color

130.0870, 1.9291, 81.4847

## Protanomaly

132.6130, 10.5438, 24.8954

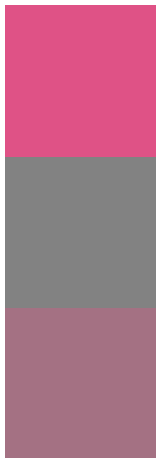
## Deuteranomaly

133.1880, -1.5717, 37.5461

## Tritanomaly

129.6880, -9.7062, 80.0806

# Monochromacy



## Original Color

130.0870, 1.9291, 81.4847

## Achromatopsia

130.0000, 0.0000, 0.0000

## Achromatomaly

130.3010, 0.3446, 29.5540

# CSS Examples

## Text

The CSS property to change the color of the text to YUV 130.0870, 1.9291, 81.4847 is called "color". The color property can be set on classes, ids or directly on the HTML element.

This example shows how text in the color `rgb(223, 82, 134)` looks like.

```
.text, #text, p{  
    color:rgb(223, 82, 134)  
}
```

If you want to add a text shadow in that color use the text-shadow property, you can generate a text shadow directly with our [CSS Text Shadow Generator](#).

Here you see how black text with a 4 pixel rgb(223, 82, 134) colored shadow looks like.

```
.shadow{ text-shadow: 4px 4px 2px rgb(223, 82, 134) }
```

## Border

The CSS property to change the border of an element to YUV 130.0870, 1.9291, 81.4847 is called "border". The border property can be set on classes, ids or directly on the HTML element.

This example shows the color as border, it can be applied via the CSS property "border" or "border-color".

```
.border, #border, table{ border:4px solid rgb(223, 82, 134) }
```



If only the border color should be changed use the property border-color.

```
.border{ border-color:rgb(223, 82, 134) }
```

If you want to add a box shadow in that color use:

Here you see how a box with a 4 pixel rgb(223, 82, 134) colored shadow looks like.

```
.boxshadow{ -moz-box-shadow:4px 4px 4px  
4px rgb(223, 82, 134); -webkit-box-  
shadow:4px 4px 4px 4px rgb(223, 82, 134);  
box-shadow:4px 4px 4px 4px rgb(223, 82,  
134) }
```

# Background

The CSS property to change the background color of an element to YUV 130.0870, 1.9291, 81.4847 is called "background". The background property can be set on classes, ids or directly on the HTML element.

```
.background, #background, body{  
background: rgb(223, 82, 134) }
```

If only the background color should be changed can be used:

```
.background{ background-color: rgb(223, 82,  
134) }
```

This example shows the color as background, it is applied via the CSS property "background".

To optimize and compress your CSS code, you can use our [online CSS compressor and optimizer](#) based on csstidy. If you want to create a linear or radial gradient as background or border, check our [CSS Gradient Generator](#).

Hey! You found this booklet interesting? Support Converting Colors with the new Membership Option!

The pro membership hides all ads, plus gives you double the colors in the color bucket, and more awesome pro features!

**[Learn more, Memberships starting at \\$2.50/m!](#)**

**Follow me  
on Twitter!**

@ConvertingColor