

Converting Colors

YUV(130.2780, -31.6891,
37.4672)

Have a look what the booklet for
YUV(130.2780, -31.6891, 37.4672)
contains.

YUV(130.2780, -31.6891, 37.4672)	3
<i>Conversions</i>	4
<i>Details</i>	6
<i>Harmonies</i>	12
<i>Previews</i>	24
<i>Color Blindness Simulation</i>	28
<i>CSS Examples</i>	31

Color

**YUV(130.2780, -31.6891,
37.4672)**

Conversions

Conversions Part 1

Format	Color
Hex	AD7942
RGB	173, 121, 66
RGB Percent	68%, 47%, 26%
CMY	0.3216, 0.5255, 0.7412
CMYK	0.00, 0.30, 0.62, 0.32
HSL	31°, 45%, 47%
HSV	31°, 62%, 68%
XYZ	25.0543, 22.9523, 8.2640
YIQ	130.2780, 48.6470, -6.0810

Conversions

Conversions Part 2

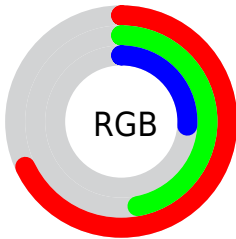
Format	Color
R_{YB}	167, 173, 66
Decimal	11368770
CIE _{Lab}	55.02, 14.46, 37.78
CIE _{LCh}	55, 40.447, 69.058
Yxy	22.9523, 0.4452, 0.4079
Android (android.graphics.Color)	4289558850 (0xFFAD7942)
YUV	130.2780, -31.6891, 37.4672
Hunter-Lab	47.9086, 9.5085, 23.3088

Details

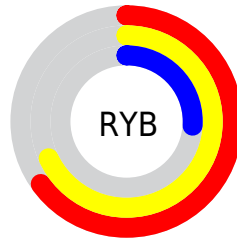
The YUV color $130.2780, -31.6891, 37.4672$ is a dark color, and the websafe version is hex 996633 . A complement of this color would be $108.7220, 31.6891, -37.4672$, and the grayscale version is $131.0000, 0.0000, 0.0000$.

A 20% lighter version of the original color is $183.8440, -33.4471, 41.3558$, and $79.4130, -29.7836, 32.9638$ is the 20% darker color. If you saturate the color by 10%, you get $123.6440, -36.7995, 43.2852$, and if you desaturate by 10%, it is $136.9120, -26.5786, 31.6492$.

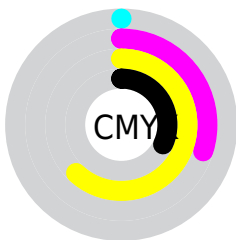
Distribution



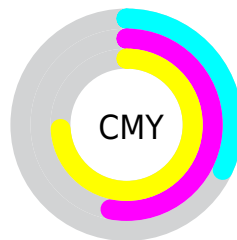
- Red (68%)
- Green (47%)
- Blue (26%)



- Red (65%)
- Yellow (68%)
- Blue (26%)



- Cyan (0%)
- Magenta (30%)
- Yellow (62%)
- Black (32%)



- Cyan (32%)
- Magenta (53%)
- Yellow (74%)

Brightness & Saturation Gradients

These gradients show how the YUV color 130.2780, -31.6891, 37.4672 changes by changing the brightness by 10 percent. The first figure shows a shift by +10% for each color and the second figure -10%.

Similar to the brightness gradients but the following saturation gradients show a change of the YUV color 130.2780, -31.6891, 37.4672 by changing the saturation by 10% instead.

■ 130.2780,
-31.6891, 37.4672

■ 130.2780,
-31.6891, 37.4672

255.0000, 0.0000,
0.0000

■ 104.4950,
-30.8100, 35.5229

■ 183.8440,
-33.4471, 41.3558

■ 79.4130, -29.7836,
32.9638

■ 210.4200,
-33.7311, 39.0967

■ 56.2600, -27.7362,
29.5900

■ 229.8200,
-30.4773, 22.0829

■ 35.5720, -17.5370,
24.9314

■ 248.2740,
-25.7711, 5.8987

■ 15.1830, -7.4852,
20.8875

■ 251.4660,
-13.5407, 3.0993

■ 0.0000, 0.0000,
0.0000

254.7720, -0.8736,

0.2000

■ 130.2780,
-31.6891, 37.4672

■ 130.2780,
-31.6891, 37.4672

■ 123.6440,
-36.7995, 43.2852

■ 136.9120,
-26.5786, 31.6492

■ 116.3090,
-42.0573, 49.7180

■ 144.2470,
-21.3208, 25.2164

■ 109.6750,
-47.1678, 55.5360

■ 150.8810,
-16.2103, 19.3984

■ 103.9700,
-51.2572, 60.5393

■ 158.1020,
-11.3893, 13.0655

■ 164.8500, -5.8420,
7.1476

■ 171.4840, -0.7316,
1.3295

■ 178.7050, 4.0894,
-5.0033

■ 185.3390, 9.1999,
-10.8213

■ 192.6740, 14.4577,
-17.2541

Harmonies

Analogous

The Analogous color harmony consists of three colors that are next to each other on the color wheel.



131.8360, -21.1181, 53.6408



130.2780, -31.6891, 37.4672



127.6680, -33.3603, 13.4462

Triad

The Triadic color harmony groups three colors that are evenly spaced from another and form a triangle on the color wheel.



130.2780, -31.6891, 37.4672



104.2380, 18.6167, -91.4167



135.0210, 25.1326, 12.2596

Complementary

The Complementary color scheme is a pair of colors which are on the opposite of each other on the color wheel.



130.2780, -31.6891, 37.4672



108.7220, 31.6891, -37.4672

Split Complementary

Split-complementary colors differ from the complementary color scheme. The scheme consists of three colors, the original color and two neighbors of the complement color.



128.2050, 35.8879, -30.8748



130.2780, -31.6891, 37.4672



106.8260, 33.6098, -93.6864

Square

The Square scheme is like the rectangle color scheme, but the four colors are evenly spaced on the color wheel.



130.2780, -31.6891, 37.4672



115.2910, -5.0735, -52.8752



105.8120, 44.9557, -92.7971



134.9510, 11.3632, 42.1390

Rectangle

The Rectangle color scheme consists of four colors that form a rectangle on the color wheel.



130.2780, -31.6891, 37.4672



125.2140, -28.2065, -6.3267



105.8120, 44.9557, -92.7971



133.6710, 29.2492, -1.4655

Sweetspot

The Sweet Spot groups the original color and five complimentary colors.



130.2780, -31.6891, 37.4672



207.4720, -12.5577, 14.4951



104.1490, 7.8145, 60.3823



101.9920, -7.8841, 8.7770



240.0000, 0.0000, 0.0000



112.0000, 0.0000, 0.0000

Same Dimension

The Same Dimension uses a secret algorithm to generate beautiful new colors.



130.2780, -31.6891, 37.4672



158.1160, -49.3572, 57.7803



160.8020, -46.7374, 10.6976



83.0390, -2.4842, 3.4738



90.0490, -44.3942, 52.5770



13.9210, -6.8631, 7.9623

Inverse Universe

The Inverse Universe completely reimagines the original color for something new.



108.7220, 31.6891, -37.4672



124.4710, 49.0678, -58.2951



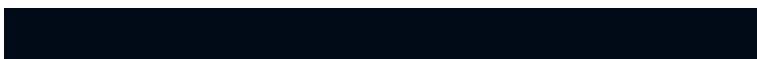
78.1980, 46.7374, -10.6976



81.3740, 2.7736, -2.9590



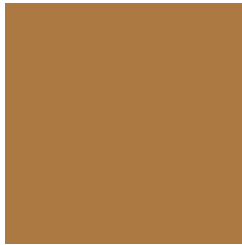
59.9510, 44.3942, -52.5770



9.0790, 6.8631, -7.9623

Previews

White Background



This preview shows how the YUV color 130.2780, -31.6891, 37.4672 looks on a white background.

Color Contrast Check

Large Text (above 18pt) WCAG AA ✓ Pass

Any Text WCAG AA × Fail

Large Text (above 18pt) WCAG AAA × Fail

Any Text WCAG AAA × Fail

Black Background



This preview shows how the YUV color 130.2780, -31.6891, 37.4672 looks on a black background.

Color Contrast Check

Large Text (above 18pt) WCAG AA ✓ Pass

Any Text WCAG AA ✓ Pass

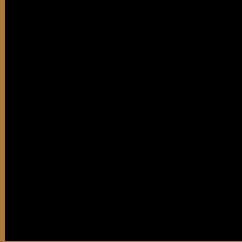
Large Text (above 18pt) WCAG AAA ✓ Pass

Any Text WCAG AAA × Fail

If you want to check with other color combinations, try the [Color Contrast Checker](#).

YUV 130.2780, -31.6891, 37.4672

Background



This preview shows how black text looks on a background with the YUV color 130.2780, -31.6891, 37.4672.



This preview shows how white text looks on a background with the YUV color 130.2780, -31.6891,

Color Blindness Simulation

Color vision deficiency is a very complex topic, and I could not describe the different causes any better than Wikipedia does, so if you want to learn more, you should check out their [article about color blindness](#).

Dichromacy



Original Color

130.2780, -31.6891, 37.4672

Protanopia

129.1180, -29.1452, 14.8055

Deuteranopia

130.1090, -32.0987, 28.8454



Tritanopia

133.8630, -5.3555, 37.8311

Trichromacy



Original Color

130.2780, -31.6891, 37.4672

Protanomaly

129.6460, -29.8985, 23.1125

Deuteranomaly

130.1310, -32.1096, 32.3341

Tritanomaly

132.9310, -15.2490, 37.7715

Monochromacy



Original Color

130.2780, -31.6891, 37.4672

Achromatopsia

130.0000, 0.0000, 0.0000

Achromatomaly

130.4010, -11.5367, 13.6803

CSS Examples

Text

The CSS property to change the color of the text to YUV 130.2780, -31.6891, 37.4672 is called "color". The color property can be set on classes, ids or directly on the HTML element.

This example shows how text in the color `rgb(173, 121, 66)` looks like.

```
.text, #text, p{  
    color:rgb(173, 121, 66)  
}
```

If you want to add a text shadow in that color use the text-shadow property, you can generate a text shadow directly with our [CSS Text Shadow Generator](#).

Here you see how black text with a 4 pixel rgb(173, 121, 66) colored shadow looks like.

```
.shadow{ text-shadow: 4px 4px 2px rgb(173, 121, 66) }
```

Border

The CSS property to change the border of an element to YUV 130.2780, -31.6891, 37.4672 is called "border".

The border property can be set on classes, ids or directly on the HTML element.

This example shows the color as border, it can be applied via the CSS property "border" or "border-color".

```
.border, #border, table{ border:4px solid rgb(173, 121, 66) }
```


If only the border color should be changed use the property `border-color`.

```
.border{ border-color:rgb(173, 121, 66) }
```

If you want to add a box shadow in that color use:

Here you see how a box with a 4 pixel `rgb(173, 121, 66)` colored shadow looks like.

```
.boxshadow{ -moz-box-shadow:4px 4px 4px  
4px rgb(173, 121, 66); -webkit-box-  
shadow:4px 4px 4px 4px rgb(173, 121, 66);  
box-shadow:4px 4px 4px 4px rgb(173, 121,  
66) }
```

Background

The CSS property to change the background color of an element to YUV 130.2780, -31.6891, 37.4672 is called "background". The background property can be set on classes, ids or directly on the HTML element.

```
.background, #background, body{  
background: rgb(173, 121, 66) }
```

If only the background color should be changed can be used:

```
.background{ background-color: rgb(173,  
121, 66) }
```

This example shows the color as background, it is applied via the CSS property "background".

To optimize and compress your CSS code, you can use our [online CSS compressor and optimizer](#) based on csstidy. If you want to create a linear or radial gradient as background or border, check our [CSS Gradient Generator](#).

Hey! You found this booklet interesting? Support Converting Colors with the new Membership Option!

The pro membership hides all ads, plus gives you double the colors in the color bucket, and more awesome pro features!

[Learn more, Memberships starting at \\$2.50/m!](#)

**Follow me
on Twitter!**

@ConvertingColor