

Converting Colors

YUV(130.3480, -10.5246,
109.3198)

Have a look what the booklet for
YUV(130.3480, -10.5246, 109.3198)
contains.

YUV(130.3480, -10.5246, 109.3198)	3
<i>Conversions</i>	4
<i>Details</i>	6
<i>Harmonies</i>	12
<i>Previews</i>	24
<i>Color Blindness Simulation</i>	28
<i>CSS Examples</i>	31

Color

**YUV(130.3480, -10.5246,
109.3198)**

Conversions

Conversions Part 1

Format	Color
Hex	FF476D
RGB	255, 71, 109
RGB Percent	100%, 28%, 43%
CMY	0.0000, 0.7216, 0.5725
CMYK	0.00, 0.72, 0.57, 0.00
HSL	348°, 100%, 64%
HSV	348°, 72%, 100%
XYZ	46.2536, 26.8706, 17.2167
YIQ	130.3480, 97.4660, 50.8260

Conversions

Conversions Part 2

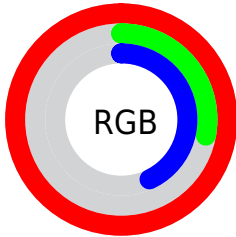
Format	Color
R_{YB}	255, 71, 109
Decimal	16729965
CIE _{Lab}	58.85, 70.64, 20.91
CIE _{LCh}	59, 73.665, 16.490
Yxy	26.8706, 0.5120, 0.2974
Android (android.graphics.Color)	4294920045 (0xFFFF476D)
YUV	130.3480, -10.5246, 109.3198
Hunter-Lab	51.8369, 68.5594, 16.5937

Details

The YUV color **130.3480, -10.5246, 109.3198** is a dark color, and the websafe version is hex **FF3366**. The color can be described as middle washed rose. A complement of this color would be **195.6520, 10.5246, -109.3198**, and the grayscale version is **130.0000, 0.0000, 0.0000**.

A 20% lighter version of the original color is **171.9690, -5.9007, 72.8182**, and **64.1770, -1.0733, 111.2238** is the 20% darker color. If you saturate the color by 10%, you get **113.3930, -12.0257, 124.1893**, and if you desaturate by 10%, it is **147.8900, -9.3128, 93.9355**.

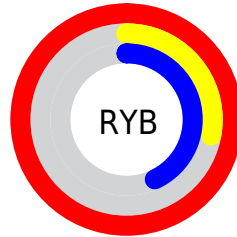
Distribution



Red (100%)

Green (28%)

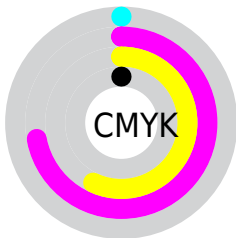
Blue (43%)



Red (100%)

Yellow (28%)

Blue (43%)

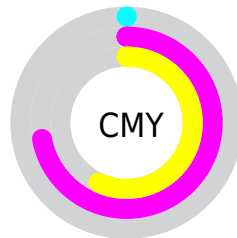


Cyan (0%)

Magenta (72%)

Yellow (57%)

Black (0%)



Cyan (0%)

Magenta (72%)

Yellow (57%)

Brightness & Saturation Gradients

These gradients show how the YUV color 130.3480, -10.5246, 109.3198 changes by changing the brightness by 10 percent. The first figure shows a shift by +10% for each color and the second figure -10%.

Similar to the brightness gradients but the following saturation gradients show a change of the YUV color 130.3480, -10.5246, 109.3198 by changing the saturation by 10% instead.

■ 130.3480,
-10.5246, 109.3198

■ 130.3480,
-10.5246, 109.3198

255.0000, 0.0000,
0.0000

■ 96.3250, -5.5832,
111.0940

■ 171.9690, -5.9007,
72.8182

■ 64.1770, -1.0733,
111.2238

■ 192.0700, -2.4995,
55.1896

■ 52.5140, -5.6764,
94.2652

■ 212.8720, 1.0491,
36.9463

■ 40.9650, -9.8427,
77.2067

■ 233.0870, 4.8871,
19.2177

■ 29.4160, -14.0091,
60.1482

■ 252.0650, 1.4470,
2.5740

■ 20.9730, -8.8607,
42.1197

■ 10.8780, -4.8699,

22.0320

■ 0.0000, 0.0000,
0.0000

■ 130.3480,
-10.5246, 109.3198

■ 130.3480,
-10.5246, 109.3198

■ 113.3930,
-12.0257, 124.1893

■ 147.8900, -9.3128,
93.9355

■ 95.8510, -13.2375,
139.5737

■ 164.8450, -7.8116,
79.0659

■ 82.2870, -14.4385,
151.4693

■ 181.9140, -5.8736,
64.0964

■ 199.4560, -4.6618,
48.7121

■ 216.9980, -3.4500,
33.3278

■ 233.9530, -1.9488,
18.4582

■ 251.6090, -0.3002,
2.9739

255.0000, 0.0000,
0.0000

Harmonies

Analogous

The Analogous color harmony consists of three colors that are next to each other on the color wheel.



136.2190, 18.6260, 92.7699



130.3480, -10.5246, 109.3198



133.5620, -42.1821, 89.8381

Triad

The Triadic color harmony groups three colors that are evenly spaced from another and form a triangle on the color wheel.



130.3480, -10.5246, 109.3198



115.6150, -36.7852, -54.9134



121.8160, 65.6597, -106.8326

Complementary

The Complementary color scheme is a pair of colors which are on the opposite of each other on the color wheel.



130.3480, -10.5246, 109.3198



195.6520, 10.5246, -109.3198

Split Complementary

Split-complementary colors differ from the complementary color scheme. The scheme consists of three colors, the original color and two neighbors of the complement color.



125.4060, 54.0298, -109.9811



130.3480, -10.5246, 109.3198



111.6290, -1.2961, -97.8986

Square

The Square scheme is like the rectangle color scheme, but the four colors are evenly spaced on the color wheel.



130.3480, -10.5246, 109.3198



129.0130, -63.6034, 7.0046



120.5550, 27.8274, -105.7267



127.4290, 62.8925, -59.1352

Rectangle

The Rectangle color scheme consists of four colors that form a rectangle on the color wheel.



130.3480, -10.5246, 109.3198



132.6430, -65.3930, 67.8421



120.5550, 27.8274, -105.7267



124.1640, 64.5021, -108.8918

Sweetspot

The Sweet Spot groups the original color and five complimentary colors.



130.3480, -10.5246, 109.3198



216.9980, -3.4500, 33.3278



135.0320, 59.1442, 70.1319



104.9640, -1.9543, 20.2026



0.0000, 0.0000, 0.0000



128.0000, 0.0000, 0.0000

Same Dimension

The Same Dimension uses a secret algorithm to generate beautiful new colors.



130.3480, -10.5246, 109.3198



104.6220, -12.6316, 131.8815



156.5400, -42.1712, 86.3494



119.1150, -1.0427, 7.7921



61.5550, -11.1196, 113.5233



20.6180, -3.7557, 38.0460

Inverse Universe

The Inverse Universe completely reimagines the original color for something new.



130.3480, -10.5246, 109.3198



104.6220, -12.6316, 131.8815



169.4600, 42.1712, -86.3494



119.1150, -1.0427, 7.7921



61.5550, -11.1196, 113.5233



20.6180, -3.7557, 38.0460

Previews

White Background



This preview shows how the YUV color 130.3480, -10.5246, 109.3198 looks on a white background.

Color Contrast Check

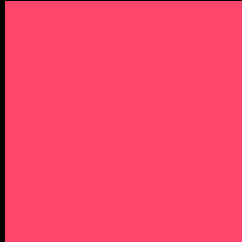
Large Text (above 18pt) WCAG AA ✓ Pass

Any Text WCAG AA × Fail

Large Text (above 18pt) WCAG AAA × Fail

Any Text WCAG AAA × Fail

Black Background



This preview shows how the YUV color 130.3480, -10.5246, 109.3198 looks on a black background.

Color Contrast Check

Large Text (above 18pt) WCAG AA ✓ Pass

Any Text WCAG AA ✓ Pass

Large Text (above 18pt) WCAG AAA ✓ Pass

Any Text WCAG AAA × Fail

If you want to check with other color combinations, try the [Color Contrast Checker](#).

YUV 130.3480, -10.5246, 109.3198 Background



This preview shows how black text looks on a background with the YUV color 130.3480, -10.5246, 109.3198.



This preview shows how white text looks on a background with the YUV color 130.3480, -10.5246, 109.3198.

Color Blindness Simulation

Color vision deficiency is a very complex topic, and I could not describe the different causes any better than Wikipedia does, so if you want to learn more, you should check out their [article about color blindness](#).

Dichromacy



Original Color

130.3480, -10.5246, 109.3198

Protanopia

142.0110, -0.0054, 1.7444

Deuteranopia

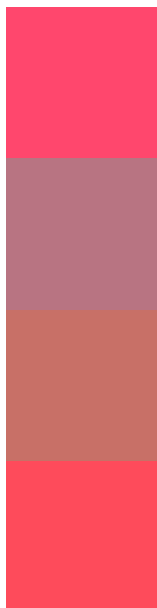
141.7630, -20.5892, 23.8868



Tritanopia

130.3790, -24.3438, 108.4156

Trichromacy



Original Color

130.3480, -10.5246, 109.3198

Protanomaly

137.9280, -3.9085, 40.4051

Deuteranomaly

137.2860, -16.9030, 55.0002

Tritanomaly

130.3450, -19.3971, 108.4454

Monochromacy



Original Color

130.3480, -10.5246, 109.3198

Achromatopsia

130.0000, 0.0000, 0.0000

Achromatomaly

130.2160, -4.0505, 39.2756

CSS Examples

Text

The CSS property to change the color of the text to YUV 130.3480, -10.5246, 109.3198 is called "color". The color property can be set on classes, ids or directly on the HTML element.

This example shows how text in the color `rgb(255, 71, 109)` looks like.

```
.text, #text, p{  
    color:rgb(255, 71, 109)  
}
```

If you want to add a text shadow in that color use the text-shadow property, you can generate a text shadow directly with our [CSS Text Shadow Generator](#).

Here you see how black text with a 4 pixel rgb(255, 71, 109) colored shadow looks like.

```
.shadow{ text-shadow: 4px 4px 2px rgb(255, 71, 109) }
```

Border

The CSS property to change the border of an element to YUV 130.3480, -10.5246, 109.3198 is called "border".

The border property can be set on classes, ids or directly on the HTML element.

This example shows the color as border, it can be applied via the CSS property "border" or "border-color".

```
.border, #border, table{ border:4px solid rgb(255, 71, 109) }
```


If only the border color should be changed use the property border-color.

```
.border{ border-color:rgb(255, 71, 109) }
```

If you want to add a box shadow in that color use:

Here you see how a box with a 4 pixel rgb(255, 71, 109) colored shadow looks like.

```
.boxshadow{ -moz-box-shadow:4px 4px 4px  
4px rgb(255, 71, 109); -webkit-box-  
shadow:4px 4px 4px 4px rgb(255, 71, 109);  
box-shadow:4px 4px 4px 4px rgb(255, 71,  
109) }
```

Background

The CSS property to change the background color of an element to YUV 130.3480, -10.5246, 109.3198 is called "background". The background property can be set on classes, ids or directly on the HTML element.

```
.background, #background, body{  
background: rgb(255, 71, 109) }
```

If only the background color should be changed can be used:

```
.background{ background-color: rgb(255, 71,  
109) }
```

This example shows the color as background, it is applied via the CSS property "background".

To optimize and compress your CSS code, you can use our [online CSS compressor and optimizer](#) based on csstidy. If you want to create a linear or radial gradient as background or border, check our [CSS Gradient Generator](#).

Hey! You found this booklet interesting? Support Converting Colors with the new Membership Option!

The pro membership hides all ads, plus gives you double the colors in the color bucket, and more awesome pro features!

[Learn more, Memberships starting at \\$2.50/m!](#)

**Follow me
on Twitter!**

@ConvertingColor