

Converting Colors

YUV(132.0750, -23.7010,
42.0302)

Have a look what the booklet for
YUV(132.0750, -23.7010, 42.0302)
contains.

YUV(132.0750, -23.7010, 42.0302)	3
<i>Conversions</i>	4
<i>Details</i>	6
<i>Harmonies</i>	12
<i>Previews</i>	24
<i>Color Blindness Simulation</i>	28
<i>CSS Examples</i>	31

Color

**YUV(132.0750, -23.7010,
42.0302)**

Conversions

Conversions Part 1

Format	Color
Hex	B47554
RGB	180, 117, 84
RGB Percent	71%, 46%, 33%
CMY	0.2941, 0.5412, 0.6706
CMYK	0.00, 0.35, 0.53, 0.29
HSL	21°, 39%, 52%
HSV	21°, 53%, 71%
XYZ	26.7839, 23.0660, 11.4280
YIQ	132.0750, 48.1410, 3.0930

Conversions

Conversions Part 2

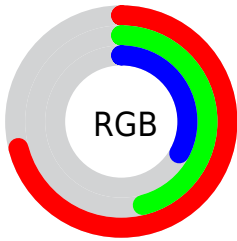
Format	Color
R _Y B	180, 134, 84
Decimal	11826516
CIE Lab	55.14, 21.17, 28.31
CIE LCh	55, 35.351, 53.221
Yxy	23.0660, 0.4371, 0.3764
Android (android.graphics.Color)	4290016596 (0xFFB47554)
YUV	132.0750, -23.7010, 42.0302
Hunter-Lab	48.0270, 15.4993, 19.5109

Details

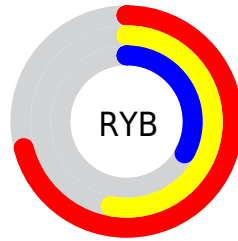
The YUV color **132.0750, -23.7010, 42.0302** is a dark color, and the websafe version is hex **996633**. A complement of this color would be **131.9250, 23.7010, -42.0302**, and the grayscale version is **132.0000, 0.0000, 0.0000**.

A 20% lighter version of the original color is **185.6410, -25.4590, 45.9188**, and **81.3240, -21.3587, 37.4269** is the 20% darker color. If you saturate the color by 10%, you get **122.9790, -28.0906, 50.0074**, and if you desaturate by 10%, it is **141.1710, -19.3113, 34.0530**.

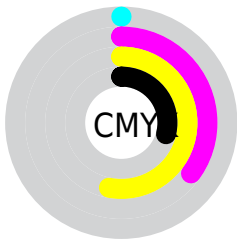
Distribution



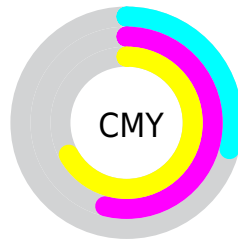
- Red (71%)
- Green (46%)
- Blue (33%)



- Red (71%)
- Yellow (53%)
- Blue (33%)



- Cyan (0%)
- Magenta (35%)
- Yellow (53%)
- Black (29%)



- Cyan (29%)
- Magenta (54%)
- Yellow (67%)

Brightness & Saturation Gradients

These gradients show how the YUV color 132.0750, -23.7010, 42.0302 changes by changing the brightness by 10 percent. The first figure shows a shift by +10% for each color and the second figure -10%.

Similar to the brightness gradients but the following saturation gradients show a change of the YUV color 132.0750, -23.7010, 42.0302 by changing the saturation by 10% instead.

■ 132.0750,
-23.7010, 42.0302

■ 132.0750,
-23.7010, 42.0302

■ 255.0000, 0.0000,
0.0000

■ 106.2920,
-22.8220, 40.0859

■ 185.6410,
-25.4590, 45.9188

■ 81.3240, -21.3587,
37.4269

■ 210.1240,
-24.7111, 39.3563

■ 57.2420, -20.3323,
34.8678

■ 229.7520,
-20.5837, 22.1425

■ 34.7300, -17.1219,
31.8088

■ 249.8530,
-17.1825, 4.5139

■ 14.0420, -6.9227,
27.1502

■ 253.7460, -4.8048,
1.0998

■ 0.2990, -0.1474,
0.6148

■ 0.0000, 0.0000,

0.0000

■ 132.0750,
-23.7010, 42.0302

■ 132.0750,
-23.7010, 42.0302

■ 122.9790,
-28.0906, 50.0074

■ 141.1710,
-19.3113, 34.0530

■ 113.8830,
-32.4803, 57.9846

■ 150.2670,
-14.9216, 26.0758

■ 105.3740,
-37.1594, 65.4470

■ 158.7760,
-10.2426, 18.6134

■ 96.2780, -41.5491,
73.4242

■ 167.8720, -5.8529,
10.6363

■ 90.2140, -44.4755,
78.7423

■ 176.9680, -1.4632,
2.6591

■ 186.0640, 2.9264,
-5.3181

■ 195.1600, 7.3161,
-13.2953

■ 204.2560, 11.7058,
-21.2725

■ 212.7650, 16.3849,
-28.7349

Harmonies

Analogous

The Analogous color harmony consists of three colors that are next to each other on the color wheel.



133.5180, -12.0874, 50.4117



132.0750, -23.7010, 42.0302



130.4720, -29.3197, 24.1421

Triad

The Triadic color harmony groups three colors that are evenly spaced from another and form a triangle on the color wheel.



132.0750, -23.7010, 42.0302



114.4670, 4.6998, -60.9226



133.3560, 26.9395, -7.3282

Complementary

The Complementary color scheme is a pair of colors which are on the opposite of each other on the color wheel.



132.0750, -23.7010, 42.0302



131.9250, 23.7010, -42.0302

Split Complementary

Split-complementary colors differ from the complementary color scheme. The scheme consists of three colors, the original color and two neighbors of the complement color.



123.2370, 33.9002, -46.6888



132.0750, -23.7010, 42.0302



104.5460, 24.8738, -91.6868

Square

The Square scheme is like the rectangle color scheme, but the four colors are evenly spaced on the color wheel.



132.0750, -23.7010, 42.0302



122.4530, -14.0273, -27.5843



105.0480, 36.9513, -92.1271



135.8070, 16.3641, 24.7253

Rectangle

The Rectangle color scheme consists of four colors that form a rectangle on the color wheel.



132.0750, -23.7010, 42.0302



128.6010, -28.3973, 8.2429



105.0480, 36.9513, -92.1271



130.3760, 29.8876, -19.6238

Sweetspot

The Sweet Spot groups the original color and five complimentary colors.



132.0750, -23.7010, 42.0302



215.9930, -9.3635, 16.6691



120.0000, 13.8040, 52.6200



106.2740, -5.5581, 9.4067



245.0000, 0.0000, 0.0000



117.0000, 0.0000, 0.0000

Same Dimension

The Same Dimension uses a secret algorithm to generate beautiful new colors.



132.0750, -23.7010, 42.0302



159.6730, -37.3068, 66.0618



159.6640, -37.3024, 17.8347



84.4520, -2.1948, 3.9886



76.8580, -37.8910, 66.7765



13.0570, -6.4371, 11.3510

Inverse Universe

The Inverse Universe completely reimagines the original color for something new.



131.9250, 23.7010, -42.0302



159.3270, 37.3068, -66.0618



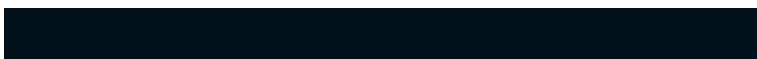
104.3360, 37.3024, -17.8347



84.5480, 2.1948, -3.9886



76.1420, 37.8910, -66.7765



12.9430, 6.4371, -11.3510

Previews

White Background



This preview shows how the YUV color 132.0750, -23.7010, 42.0302 looks on a white background.

Color Contrast Check

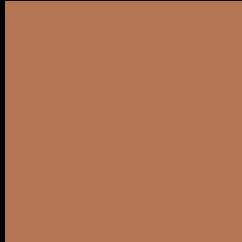
Large Text (above 18pt) WCAG AA ✓ Pass

Any Text WCAG AA × Fail

Large Text (above 18pt) WCAG AAA × Fail

Any Text WCAG AAA × Fail

Black Background



This preview shows how the YUV color 132.0750, -23.7010, 42.0302 looks on a black background.

Color Contrast Check

Large Text (above 18pt) WCAG AA ✓ Pass

Any Text WCAG AA ✓ Pass

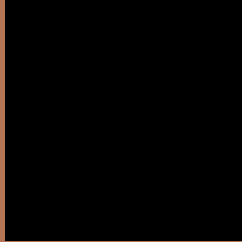
Large Text (above 18pt) WCAG AAA ✓ Pass

Any Text WCAG AAA × Fail

If you want to check with other color combinations, try the [Color Contrast Checker](#).

YUV 132.0750, -23.7010, 42.0302

Background



This preview shows how black text looks on a background with the YUV color 132.0750, -23.7010, 42.0302.



This preview shows how white text looks on a background with the YUV color 132.0750, -23.7010, 42.0302.

Color Blindness Simulation

Color vision deficiency is a very complex topic, and I could not describe the different causes any better than Wikipedia does, so if you want to learn more, you should check out their [article about color blindness](#).

Dichromacy



Original Color

132.0750, -23.7010, 42.0302

Protanopia

130.5010, -19.9670, 10.9616

Deuteranopia

131.1500, -24.2310, 25.3014



Tritanopia

134.2550, -6.5347, 42.7494

Trichromacy



Original Color

132.0750, -23.7010, 42.0302

Protanomaly

131.2250, -21.3099, 21.7277

Deuteranomaly

131.5960, -23.9578, 31.0493

Tritanomaly

133.6480, -12.6445, 42.4047

Monochromacy



Original Color

132.0750, -23.7010, 42.0302

Achromatopsia

132.0000, 0.0000, 0.0000

Achromatomaly

132.2100, -8.4845, 14.7248

CSS Examples

Text

The CSS property to change the color of the text to YUV 132.0750, -23.7010, 42.0302 is called "color". The color property can be set on classes, ids or directly on the HTML element.

This example shows how text in the color `rgb(180, 117, 84)` looks like.

```
.text, #text, p{  
    color:rgb(180, 117, 84)  
}
```

If you want to add a text shadow in that color use the text-shadow property, you can generate a text shadow directly with our [CSS Text Shadow Generator](#).

Here you see how black text with a 4 pixel rgb(180, 117, 84) colored shadow looks like.

```
.shadow{ text-shadow: 4px 4px 2px rgb(180, 117, 84) }
```

Border

The CSS property to change the border of an element to YUV 132.0750, -23.7010, 42.0302 is called "border".

The border property can be set on classes, ids or directly on the HTML element.

This example shows the color as border, it can be applied via the CSS property "border" or "border-color".

```
.border, #border, table{ border:4px solid rgb(180, 117, 84) }
```


If only the border color should be changed use the property `border-color`.

```
.border{ border-color:rgb(180, 117, 84) }
```

If you want to add a box shadow in that color use:

Here you see how a box with a 4 pixel `rgb(180, 117, 84)` colored shadow looks like.

```
.boxshadow{ -moz-box-shadow:4px 4px 4px  
4px rgb(180, 117, 84); -webkit-box-  
shadow:4px 4px 4px 4px rgb(180, 117, 84);  
box-shadow:4px 4px 4px 4px rgb(180, 117,  
84) }
```

Background

The CSS property to change the background color of an element to YUV 132.0750, -23.7010, 42.0302 is called "background". The background property can be set on classes, ids or directly on the HTML element.

```
.background, #background, body{  
background: rgb(180, 117, 84) }
```

If only the background color should be changed can be used:

```
.background{ background-color: rgb(180,  
117, 84) }
```

This example shows the color as background, it is applied via the CSS property "background".

To optimize and compress your CSS code, you can use our [online CSS compressor and optimizer](#) based on csstidy. If you want to create a linear or radial gradient as background or border, check our [CSS Gradient Generator](#).

Hey! You found this booklet interesting? Support Converting Colors with the new Membership Option!

The pro membership hides all ads, plus gives you double the colors in the color bucket, and more awesome pro features!

[Learn more, Memberships starting at \\$2.50/m!](#)

**Follow me
on Twitter!**

@ConvertingColor