

Converting Colors

YUV(132.1350, -10.9126,
93.7206)

Have a look what the booklet for
YUV(132.1350, -10.9126, 93.7206)
contains.

YUV(132.1350, -10.9126, 93.7206)	3
<i>Conversions</i>	4
<i>Details</i>	6
<i>Harmonies</i>	12
<i>Previews</i>	24
<i>Color Blindness Simulation</i>	28
<i>CSS Examples</i>	31

Color

**YUV(132.1350, -10.9126,
93.7206)**

Conversions

Conversions Part 1

Format	Color
Hex	EF526E
RGB	239, 82, 110
RGB Percent	94%, 32%, 43%
CMY	0.0627, 0.6784, 0.5686
CMYK	0.00, 0.66, 0.54, 0.06
HSL	349°, 83%, 63%
HSV	349°, 66%, 94%
XYZ	41.4284, 25.5111, 17.4925
YIQ	132.1350, 84.5840, 41.9920

Conversions

Conversions Part 2

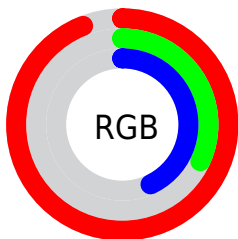
Format	Color
R _Y B	239, 82, 110
Decimal	15684206
CIE Lab	57.57, 61.99, 18.12
CIE LCh	58, 64.584, 16.294
Yxy	25.5111, 0.4907, 0.3021
Android (android.graphics.Color)	4293874286 (0xFFEF526E)
YUV	132.1350, -10.9126, 93.7206
Hunter-Lab	50.5085, 58.0204, 14.8222

Details

The YUV color **132.1350, -10.9126, 93.7206** is a dark color, and the websafe version is hex **FF6666**. The color can be described as middle muted rose. A complement of this color would be **188.8650, 10.9126, -93.7206**, and the grayscale version is **132.0000, 0.0000, 0.0000**.

A 20% lighter version of the original color is **176.1920, -7.4897, 69.1146**, and **63.6270, -0.3091, 99.4281** is the 20% darker color. If you saturate the color by 10%, you get **115.7670, -12.7031, 108.0753**, and if you desaturate by 10%, it is **148.5030, -9.1220, 79.3659**.

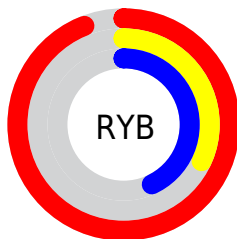
Distribution



Red (94%)

Green (32%)

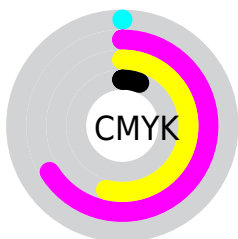
Blue (43%)



Red (94%)

Yellow (32%)

Blue (43%)

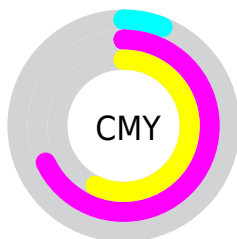


Cyan (0%)

Magenta (66%)

Yellow (54%)

Black (6%)



Cyan (6%)

Magenta (68%)

Yellow (57%)

Brightness & Saturation Gradients

These gradients show how the YUV color 132.1350, -10.9126, 93.7206 changes by changing the brightness by 10 percent. The first figure shows a shift by +10% for each color and the second figure -10%.

Similar to the brightness gradients but the following saturation gradients show a change of the YUV color 132.1350, -10.9126, 93.7206 by changing the saturation by 10% instead.

■ 132.1350,
-10.9126, 93.7206

■ 132.1350,
-10.9126, 93.7206

■ 255.0000, 0.0000,
0.0000

■ 101.9330, -7.8550,
93.0208

■ 176.1920, -7.4897,
69.1146

■ 63.6270, -0.3091,
99.4281

■ 196.2930, -4.0884,
51.4860

■ 48.6270, -3.7601,
86.2731

■ 216.5080, -0.2504,
33.7575

■ 37.1920, -7.4897,
69.1146

■ 236.7230, 3.5876,
16.0289

■ 26.0130, -12.8244,
53.4856

■ 17.8690, -7.8234,
36.0719

■ 5.6810, -2.8007,

11.6808

■ 0.0000, 0.0000,
0.0000

■ 132.1350,
-10.9126, 93.7206

■ 132.1350,
-10.9126, 93.7206

■ 115.7670,
-12.7031, 108.0753

■ 148.5030, -9.1220,
79.3659

■ 99.5130, -14.0569,
122.3301

■ 164.7570, -7.7682,
65.1111

■ 83.1450, -15.8475,
136.6848


■ 181.1250, -5.9776,
50.7564


■ 76.3630, -16.4480,
142.6326

■ 197.4930, -4.1870,
36.4016

■ 213.7470, -2.8333,
22.1469

 229.5280, -0.7533,
8.3069

 245.7820, 0.6005,
-5.9478

 250.2160, 2.3585,
-9.8364

Harmonies

Analogous

The Analogous color harmony consists of three colors that are next to each other on the color wheel.



136.5070, 15.0330, 78.4854



132.1350, -10.9126, 93.7206



133.1630, -37.0554, 78.7870

Triad

The Triadic color harmony groups three colors that are evenly spaced from another and form a triangle on the color wheel.



132.1350, -10.9126, 93.7206



118.6470, -31.8710, -44.4174



117.4960, 64.3385, -103.0440

Complementary

The Complementary color scheme is a pair of colors which are on the opposite of each other on the color wheel.



132.1350, -10.9126, 93.7206



188.8650, 10.9126, -93.7206

Split Complementary

Split-complementary colors differ from the complementary color scheme. The scheme consists of three colors, the original color and two neighbors of the complement color.



120.0600, 48.7774, -105.2926



132.1350, -10.9126, 93.7206



108.2210, 0.8770, -94.9098

Square

The Square scheme is like the rectangle color scheme, but the four colors are evenly spaced on the color wheel.



132.1350, -10.9126, 93.7206



125.7790, -62.0090, 8.9638



115.4200, 25.9219, -101.2233



130.7360, 57.3182, -44.4955

Rectangle

The Rectangle color scheme consists of four colors that form a rectangle on the color wheel.



132.1350, -10.9126, 93.7206



132.2150, -52.8570, 60.3244



115.4200, 25.9219, -101.2233



119.1600, 60.5601, -104.5033

Sweetspot

The Sweet Spot groups the original color and five complimentary colors.



132.1350, -10.9126, 93.7206



220.2750, -3.5866, 30.4538



138.1700, 49.7092, 62.9949



106.8390, -2.3856, 18.5582



0.0000, 0.0000, 0.0000



128.0000, 0.0000, 0.0000

Same Dimension

The Same Dimension uses a secret algorithm to generate beautiful new colors.



132.1350, -10.9126, 93.7206



118.0890, -14.3409, 120.0709



158.2930, -37.6124, 70.7800



111.8160, -0.8953, 7.1774



58.7780, -12.7086, 109.8197



17.8840, -3.8868, 33.4277

Inverse Universe

The Inverse Universe completely reimagines the original color for something new.



132.1350, -10.9126, 93.7206



118.0890, -14.3409, 120.0709



162.7070, 37.6124, -70.7800



111.8160, -0.8953, 7.1774



58.7780, -12.7086, 109.8197



17.8840, -3.8868, 33.4277

Previews

White Background



This preview shows how the YUV color 132.1350, -10.9126, 93.7206 looks on a white background.

Color Contrast Check

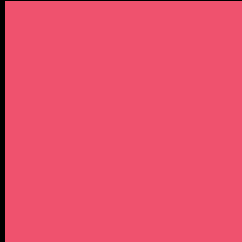
Large Text (above 18pt) WCAG AA ✓ Pass

Any Text WCAG AA × Fail

Large Text (above 18pt) WCAG AAA × Fail

Any Text WCAG AAA × Fail

Black Background



This preview shows how the YUV color 132.1350, -10.9126, 93.7206 looks on a black background.

Color Contrast Check

Large Text (above 18pt) WCAG AA ✓ Pass

Any Text WCAG AA ✓ Pass

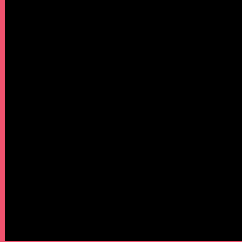
Large Text (above 18pt) WCAG AAA ✓ Pass

Any Text WCAG AAA × Fail

If you want to check with other color combinations, try the [Color Contrast Checker](#).

YUV 132.1350, -10.9126, 93.7206

Background



This preview shows how black text looks on a background with the YUV color 132.1350, -10.9126, 93.7206.



This preview shows how white text looks on a background with the YUV color 132.1350, -10.9126, 93.7206.

Color Blindness Simulation

Color vision deficiency is a very complex topic, and I could not describe the different causes any better than Wikipedia does, so if you want to learn more, you should check out their [article about color blindness](#).

Dichromacy



Original Color

132.1350, -10.9126, 93.7206

Protanopia

138.8970, -0.4422, 1.8443

Deuteranopia

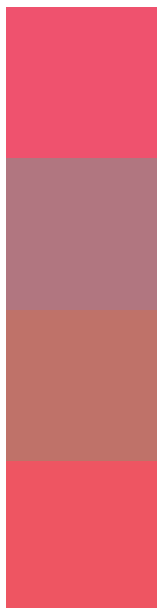
138.7350, -18.1104, 22.1574



Tritanopia

132.0180, -20.2219, 92.9462

Trichromacy



Original Color

132.1350, -10.9126, 93.7206

Protanomaly

136.7810, -4.3290, 35.2721

Deuteranomaly

135.9970, -15.2815, 48.2376

Tritanomaly

132.2290, -16.8749, 92.7612

Monochromacy



Original Color

132.1350, -10.9126, 93.7206

Achromatopsia

132.0000, 0.0000, 0.0000

Achromatomaly

132.1830, -4.0342, 34.0425

CSS Examples

Text

The CSS property to change the color of the text to YUV 132.1350, -10.9126, 93.7206 is called "color". The color property can be set on classes, ids or directly on the HTML element.

This example shows how text in the color `rgb(239, 82, 110)` looks like.

```
.text, #text, p{  
    color:rgb(239, 82, 110)  
}
```

If you want to add a text shadow in that color use the text-shadow property, you can generate a text shadow directly with our [CSS Text Shadow Generator](#).

Here you see how black text with a 4 pixel rgb(239, 82, 110) colored shadow looks like.

```
.shadow{ text-shadow: 4px 4px 2px rgb(239, 82, 110) }
```

Border

The CSS property to change the border of an element to YUV 132.1350, -10.9126, 93.7206 is called "border".

The border property can be set on classes, ids or directly on the HTML element.

This example shows the color as border, it can be applied via the CSS property "border" or "border-color".

```
.border, #border, table{ border:4px solid rgb(239, 82, 110) }
```


If only the border color should be changed use the property border-color.

```
.border{ border-color:rgb(239, 82, 110) }
```

If you want to add a box shadow in that color use:

Here you see how a box with a 4 pixel rgb(239, 82, 110) colored shadow looks like.

```
.boxshadow{ -moz-box-shadow:4px 4px 4px  
4px rgb(239, 82, 110); -webkit-box-  
shadow:4px 4px 4px 4px rgb(239, 82, 110);  
box-shadow:4px 4px 4px 4px rgb(239, 82,  
110) }
```

Background

The CSS property to change the background color of an element to YUV 132.1350, -10.9126, 93.7206 is called "background". The background property can be set on classes, ids or directly on the HTML element.

```
.background, #background, body{  
background: rgb(239, 82, 110) }
```

If only the background color should be changed can be used:

```
.background{ background-color: rgb(239, 82,  
110) }
```

This example shows the color as background, it is applied via the CSS property "background".

To optimize and compress your CSS code, you can use our [online CSS compressor and optimizer](#) based on csstidy. If you want to create a linear or radial gradient as background or border, check our [CSS Gradient Generator](#).

Hey! You found this booklet interesting? Support Converting Colors with the new Membership Option!

The pro membership hides all ads, plus gives you double the colors in the color bucket, and more awesome pro features!

[Learn more, Memberships starting at \\$2.50/m!](#)

**Follow me
on Twitter!**

@ConvertingColor