

Converting Colors

YUV(132.2440, -26.7423,
37.4970)

Have a look what the booklet for
YUV(132.2440, -26.7423, 37.4970)
contains.

YUV(132.2440, -26.7423, 37.4970)	3
<i>Conversions</i>	4
<i>Details</i>	6
<i>Harmonies</i>	12
<i>Previews</i>	24
<i>Color Blindness Simulation</i>	28
<i>CSS Examples</i>	31

Color

**YUV(132.2440, -26.7423,
37.4970)**

Conversions

Conversions Part 1

Format	Color
Hex	AF794E
RGB	175, 121, 78
RGB Percent	69%, 47%, 31%
CMY	0.3137, 0.5255, 0.6941
CMYK	0.00, 0.31, 0.55, 0.31
HSL	27°, 38%, 50%
HSV	27°, 55%, 69%
XYZ	25.8917, 23.3388, 10.3479
YIQ	132.2440, 45.9870, -1.9250

Conversions

Conversions Part 2

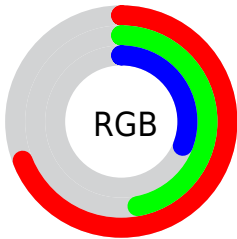
Format	Color
RYB	175, 155, 78
Decimal	11499854
CIELab	55.42, 16.28, 31.87
CIELCh	55, 35.785, 62.938
Yxy	23.3388, 0.4346, 0.3917
Android (android.graphics.Color)	4289689934 (0xFFAF794E)
YUV	132.2440, -26.7423, 37.4970
Hunter-Lab	48.3102, 11.1237, 21.1174

Details

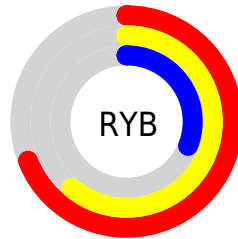
The YUV color $132.2440, -26.7423, 37.4970$ is a dark color, and the websafe version is hex 996633 . A complement of this color would be $120.7560, 26.7423, -37.4970$, and the grayscale version is $132.0000, 0.0000, 0.0000$.

A 20% lighter version of the original color is $185.8100, -28.5003, 41.3856$, and $81.4930, -24.4000, 32.8936$ is the 20% darker color. If you saturate the color by 10%, you get $124.3220, -31.7107, 44.4446$, and if you desaturate by 10%, it is $140.1660, -21.7738, 30.5494$.

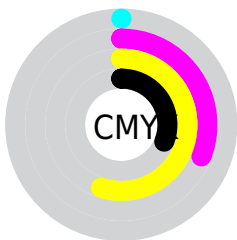
Distribution



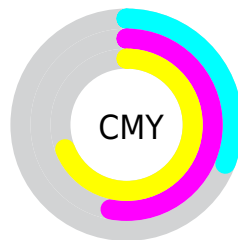
- Red (69%)
- Green (47%)
- Blue (31%)



- Red (69%)
- Yellow (61%)
- Blue (31%)



- Cyan (0%)
- Magenta (31%)
- Yellow (55%)
- Black (31%)



- Cyan (31%)
- Magenta (53%)
- Yellow (69%)

Brightness & Saturation Gradients

These gradients show how the YUV color 132.2440, -26.7423, 37.4970 changes by changing the brightness by 10 percent. The first figure shows a shift by +10% for each color and the second figure -10%.

Similar to the brightness gradients but the following saturation gradients show a change of the YUV color 132.2440, -26.7423, 37.4970 by changing the saturation by 10% instead.

■ 132.2440,
-26.7423, 37.4970

■ 132.2440,
-26.7423, 37.4970

■ 255.0000, 0.0000,
0.0000

■ 106.4610,
-25.8633, 35.5527

■ 185.8100,
-28.5003, 41.3856

■ 81.4930, -24.4000,
32.8936

■ 211.7880,
-28.4895, 37.8969

■ 57.2970, -23.8104,
30.4345

■ 231.3020,
-24.7989, 20.7831

■ 36.4690, -17.9792,
26.7757

■ 249.7560,
-20.0927, 4.5990

■ 15.7810, -7.7800,
22.1171

■ 252.9480, -7.8624,
1.7996

■ 0.0000, 0.0000,
0.0000

■ 132.2440,
-26.7423, 37.4970

■ 132.2440,
-26.7423, 37.4970

■ 124.3220,
-31.7107, 44.4446

■ 140.1660,
-21.7738, 30.5494

■ 117.1010,
-36.5318, 50.7774

■ 147.3870,
-16.9528, 24.2166

■ 109.1790,
-41.5002, 57.7250

■ 155.3090,
-11.9843, 17.2690

■ 101.3710,
-46.0319, 64.5726

■ 163.1170, -7.4527,
10.4214

■ 98.1110, -48.3687,
67.4317

■ 171.0390, -2.4842,
3.4738

■ 178.2600, 2.3368,
-2.8590

■ 186.1820, 7.3053,
-9.8066

■ 193.9900, 11.8369,

-16.6542

■ 201.7980, 16.3686,
-23.5018

Harmonies

Analogous

The Analogous color harmony consists of three colors that are next to each other on the color wheel.



133.4810, -16.0131, 49.5672



132.2440, -26.7423, 37.4970



130.0150, -29.5874, 16.6498

Triad

The Triadic color harmony groups three colors that are evenly spaced from another and form a triangle on the color wheel.



132.2440, -26.7423, 37.4970



107.6370, 13.4900, -80.3656



135.1510, 24.5756, 4.2526

Complementary

The Complementary color scheme is a pair of colors which are on the opposite of each other on the color wheel.



132.2440, -26.7423, 37.4970



120.7560, 26.7423, -37.4970

Split Complementary

Split-complementary colors differ from the complementary color scheme. The scheme consists of three colors, the original color and two neighbors of the complement color.



127.9720, 32.5518, -34.1784



132.2440, -26.7423, 37.4970



105.6860, 29.2418, -92.6866

Square

The Square scheme is like the rectangle color scheme, but the four colors are evenly spaced on the color wheel.



132.2440, -26.7423, 37.4970



121.3530, -9.0480, -38.0206



105.2590, 40.2983, -92.3121



136.7110, 11.9745, 32.7025

Rectangle

The Rectangle color scheme consists of four colors that form a rectangle on the color wheel.



132.2440, -26.7423, 37.4970



127.7140, -26.4810, 0.2508



105.2590, 40.2983, -92.3121



133.5840, 27.8131, -7.5282

Sweetspot

The Sweet Spot groups the original color and five complimentary colors.



132.2440, -26.7423, 37.4970



209.6400, -10.6685, 15.2247



113.2730, 9.7254, 54.1346



104.7470, -6.2843, 8.9919



242.0000, 0.0000, 0.0000



115.0000, 0.0000, 0.0000

Same Dimension

The Same Dimension uses a secret algorithm to generate beautiful new colors.



132.2440, -26.7423, 37.4970



159.7770, -41.7951, 58.9546



160.4200, -40.6331, 12.7867



83.0390, -2.4842, 3.4738



84.1790, -41.5002, 57.7250



12.7470, -6.2843, 8.9919

Inverse Universe

The Inverse Universe completely reimagines the original color for something new.



120.7560, 26.7423, -37.4970



142.2230, 41.7951, -58.9546



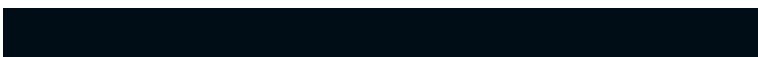
92.5800, 40.6331, -12.7867



81.9610, 2.4842, -3.4738



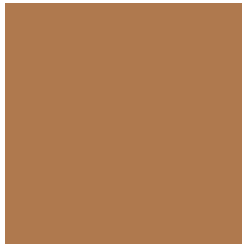
66.4080, 41.2109, -58.2398



10.2530, 6.2843, -8.9919

Previews

White Background



This preview shows how the YUV color 132.2440, -26.7423, 37.4970 looks on a white background.

Color Contrast Check

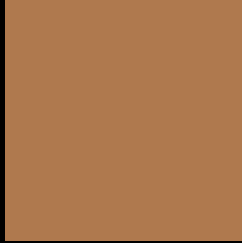
Large Text (above 18pt) WCAG AA ✓ Pass

Any Text WCAG AA × Fail

Large Text (above 18pt) WCAG AAA × Fail

Any Text WCAG AAA × Fail

Black Background



This preview shows how the YUV color 132.2440, -26.7423, 37.4970 looks on a black background.

Color Contrast Check

Large Text (above 18pt) WCAG AA ✓ Pass

Any Text WCAG AA ✓ Pass

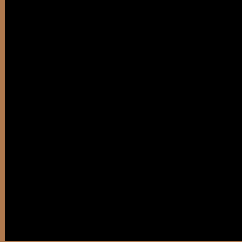
Large Text (above 18pt) WCAG AAA ✓ Pass

Any Text WCAG AAA × Fail

If you want to check with other color combinations, try the [Color Contrast Checker](#).

YUV 132.2440, -26.7423, 37.4970

Background



This preview shows how black text looks on a background with the YUV color 132.2440, -26.7423, 37.4970.



This preview shows how white text looks on a background with the YUV color 132.2440, -26.7423,

Color Blindness Simulation

Color vision deficiency is a very complex topic, and I could not describe the different causes any better than Wikipedia does, so if you want to learn more, you should check out their [article about color blindness](#).

Dichromacy



Original Color

132.2440, -26.7423, 37.4970

Protanopia

130.8880, -23.6088, 12.3762

Deuteranopia

131.7650, -26.9991, 26.5161



Tritanopia

135.1620, -5.5029, 38.4459

Trichromacy



Original Color

132.2440, -26.7423, 37.4970

Protanomaly

131.6010, -24.9463, 21.3979

Deuteranomaly

132.0860, -27.1574, 30.6196

Tritanomaly

134.0990, -13.3598, 38.5012

Monochromacy



Original Color

132.2440, -26.7423, 37.4970

Achromatopsia

132.0000, 0.0000, 0.0000

Achromatomaly

132.1560, -9.9369, 13.8952

CSS Examples

Text

The CSS property to change the color of the text to YUV 132.2440, -26.7423, 37.4970 is called "color". The color property can be set on classes, ids or directly on the HTML element.

This example shows how text in the color `rgb(175, 121, 78)` looks like.

```
.text, #text, p{  
    color:rgb(175, 121, 78)  
}
```

If you want to add a text shadow in that color use the text-shadow property, you can generate a text shadow directly with our [CSS Text Shadow Generator](#).

Here you see how black text with a 4 pixel rgb(175, 121, 78) colored shadow looks like.

```
.shadow{ text-shadow: 4px 4px 2px rgb(175, 121, 78) }
```

Border

The CSS property to change the border of an element to YUV 132.2440, -26.7423, 37.4970 is called "border".

The border property can be set on classes, ids or directly on the HTML element.

This example shows the color as border, it can be applied via the CSS property "border" or "border-color".

```
.border, #border, table{ border:4px solid rgb(175, 121, 78) }
```


If only the border color should be changed use the property `border-color`.

```
.border{ border-color:rgb(175, 121, 78) }
```

If you want to add a box shadow in that color use:

Here you see how a box with a 4 pixel `rgb(175, 121, 78)` colored shadow looks like.

```
.boxshadow{ -moz-box-shadow:4px 4px 4px  
4px rgb(175, 121, 78); -webkit-box-  
shadow:4px 4px 4px 4px rgb(175, 121, 78);  
box-shadow:4px 4px 4px 4px rgb(175, 121,  
78) }
```

Background

The CSS property to change the background color of an element to YUV 132.2440, -26.7423, 37.4970 is called "background". The background property can be set on classes, ids or directly on the HTML element.

```
.background, #background, body{  
background: rgb(175, 121, 78) }
```

If only the background color should be changed can be used:

```
.background{ background-color: rgb(175,  
121, 78) }
```

This example shows the color as background, it is applied via the CSS property "background".

To optimize and compress your CSS code, you can use our [online CSS compressor and optimizer](#) based on csstidy. If you want to create a linear or radial gradient as background or border, check our [CSS Gradient Generator](#).

Hey! You found this booklet interesting? Support Converting Colors with the new Membership Option!

The pro membership hides all ads, plus gives you double the colors in the color bucket, and more awesome pro features!

[Learn more, Memberships starting at \\$2.50/m!](#)

**Follow me
on Twitter!**

@ConvertingColor