

Converting Colors

YUV(132.5360, -22.9422,
31.9789)

Have a look what the booklet for
YUV(132.5360, -22.9422, 31.9789)
contains.

YUV(132.5360, -22.9422, 31.9789)	3
<i>Conversions</i>	4
<i>Details</i>	6
<i>Harmonies</i>	12
<i>Previews</i>	24
<i>Color Blindness Simulation</i>	28
<i>CSS Examples</i>	31

Color

**YUV(132.5360, -22.9422,
31.9789)**

Conversions

Conversions Part 1

Format	Color
Hex	A97B56
RGB	169, 123, 86
RGB Percent	66%, 48%, 34%
CMY	0.3373, 0.5176, 0.6627
CMYK	0.00, 0.27, 0.49, 0.34
HSL	27°, 33%, 50%
HSV	27°, 49%, 66%
XYZ	25.1249, 23.2728, 11.9720
YIQ	132.5360, 39.2930, -1.7550

Conversions

Conversions Part 2

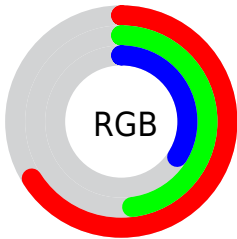
Format	Color
R_{YB}	169, 153, 86
Decimal	11107158
CIE _{Lab}	55.35, 13.34, 27.21
CIE _{LCh}	55, 30.300, 63.882
Yxy	23.2728, 0.4162, 0.3855
Android (android.graphics.Color)	4289297238 (0xFFA97B56)
YUV	132.5360, -22.9422, 31.9789
Hunter-Lab	48.2419, 8.5412, 19.0556

Details

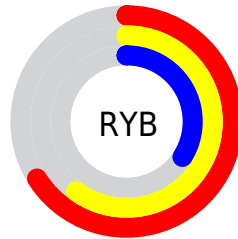
The YUV color **132.5360, -22.9422, 31.9789** is a dark color, and the websafe version is hex **996633**. A complement of this color would be **122.4640, 22.9422, -31.9789**, and the grayscale version is **133.0000, 0.0000, 0.0000**.

A 20% lighter version of the original color is **186.3900, -24.8423, 34.7380**, and **82.0840, -20.7474, 27.9903** is the 20% darker color. If you saturate the color by 10%, you get **125.3150, -27.7633, 38.3117**, and if you desaturate by 10%, it is **139.7570, -18.1212, 25.6461**.

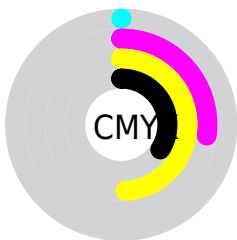
Distribution



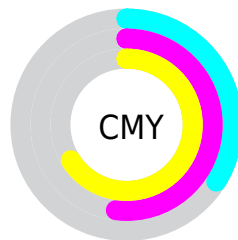
- Red (66%)
- Green (48%)
- Blue (34%)



- Red (66%)
- Yellow (60%)
- Blue (34%)



- Cyan (0%)
- Magenta (27%)
- Yellow (49%)
- Black (34%)



- Cyan (34%)
- Magenta (52%)
- Yellow (66%)

Brightness & Saturation Gradients

These gradients show how the YUV color 132.5360, -22.9422, 31.9789 changes by changing the brightness by 10 percent. The first figure shows a shift by +10% for each color and the second figure -10%.

Similar to the brightness gradients but the following saturation gradients show a change of the YUV color 132.5360, -22.9422, 31.9789 by changing the saturation by 10% instead.

■ 132.5360,
-22.9422, 31.9789

■ 132.5360,
-22.9422, 31.9789

■ 255.0000, 0.0000,
0.0000

■ 106.7530,
-22.0632, 30.0346

■ 186.3900,
-24.8423, 34.7380

■ 82.0840, -20.7474,
27.9903

■ 213.9880,
-25.1371, 35.9675

■ 58.3010, -19.8684,
26.0460

■ 233.5020,
-21.4465, 18.8537

■ 36.4470, -17.9684,
23.2870

■ 250.7820,
-16.1615, 3.6992

■ 16.0580, -7.9166,
19.2431

■ 253.9740, -3.9312,
0.8998

■ 0.0000, 0.0000,
0.0000

■ 132.5360,
-22.9422, 31.9789

■ 132.5360,
-22.9422, 31.9789

■ 125.3150,
-27.7633, 38.3117

■ 139.7570,
-18.1212, 25.6461

■ 117.5070,
-32.2950, 45.1594

■ 147.5650,
-13.5895, 18.7985

■ 110.2860,
-37.1160, 51.4922

■ 154.7860, -8.7685,
12.4657

■ 103.0650,
-41.9370, 57.8250

■ 162.0070, -3.9475,
6.1329

■ 95.3710, -46.0319,
64.5726

■ 169.7010, 0.1474,
-0.6148

■ 94.5560, -46.6161,
65.2874

■ 176.9220, 4.9685,
-6.9476

■ 184.7300, 9.5001,
-13.7952

■ 191.9510, 14.3212,

-20.1280

■ 199.1720, 19.1422,
-26.4608

Harmonies

Analogous

The Analogous color harmony consists of three colors that are next to each other on the color wheel.



133.8930, -14.2442, 42.1898



132.5360, -22.9422, 31.9789



130.5570, -24.9246, 14.4205

Triad

The Triadic color harmony groups three colors that are evenly spaced from another and form a triangle on the color wheel.



132.5360, -22.9422, 31.9789



117.5260, 8.6147, -56.5893



135.2990, 20.0656, 4.1228

Complementary

The Complementary color scheme is a pair of colors which are on the opposite of each other on the color wheel.



132.5360, -22.9422, 31.9789



122.4640, 22.9422, -31.9789

Split Complementary

Split-complementary colors differ from the complementary color scheme. The scheme consists of three colors, the original color and two neighbors of the complement color.



129.9470, 27.1411, -25.3865



132.5360, -22.9422, 31.9789



112.4280, 23.9460, -74.0434

Square

The Square scheme is like the rectangle color scheme, but the four colors are evenly spaced on the color wheel.



132.5360, -22.9422, 31.9789



123.5540, -7.1751, -32.0579



119.9170, 29.1279, -56.0552



136.4070, 9.6593, 28.5841

Rectangle

The Rectangle color scheme consists of four colors that form a rectangle on the color wheel.



132.5360, -22.9422, 31.9789



128.5660, -21.9710, 0.3806



119.9170, 29.1279, -56.0552



133.9280, 22.7135, -5.1989

Sweetspot

The Sweet Spot groups the original color and five complimentary colors.



132.5360, -22.9422, 31.9789



204.6720, -9.2053, 12.5657



116.1750, 8.2947, 46.3275



101.2630, -5.5527, 7.6623



237.0000, 0.0000, 0.0000



110.0000, 0.0000, 0.0000

Same Dimension

The Same Dimension uses a secret algorithm to generate beautiful new colors.



132.5360, -22.9422, 31.9789



162.6170, -35.8002, 49.4479



156.0160, -34.5179, 11.3870



80.1530, -2.0474, 3.3738



82.9940, -40.9160, 57.0103



11.2630, -5.5527, 7.6623

Inverse Universe

The Inverse Universe completely reimagines the original color for something new.



122.4640, 22.9422, -31.9789



146.9700, 35.5108, -49.9627



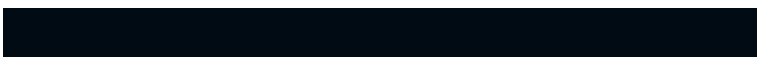
98.9840, 34.5179, -11.3870



79.2600, 2.3368, -2.8590



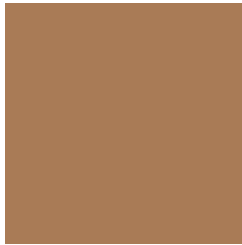
65.0060, 40.9160, -57.0103



8.7370, 5.5527, -7.6623

Previews

White Background



This preview shows how the YUV color 132.5360, -22.9422, 31.9789 looks on a white background.

Color Contrast Check

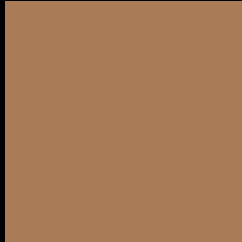
Large Text (above 18pt) WCAG AA ✓ Pass

Any Text WCAG AA × Fail

Large Text (above 18pt) WCAG AAA × Fail

Any Text WCAG AAA × Fail

Black Background



This preview shows how the YUV color 132.5360, -22.9422, 31.9789 looks on a black background.

Color Contrast Check

Large Text (above 18pt) WCAG AA ✓ Pass

Any Text WCAG AA ✓ Pass

Large Text (above 18pt) WCAG AAA ✓ Pass

Any Text WCAG AAA × Fail

If you want to check with other color combinations, try the [Color Contrast Checker](#).

YUV 132.5360, -22.9422, 31.9789

Background



This preview shows how black text looks on a background with the YUV color 132.5360, -22.9422, 31.9789.



This preview shows how white text looks on a background with the YUV color 132.5360, -22.9422, 31.9789.

31.9789.

Color Blindness Simulation

Color vision deficiency is a very complex topic, and I could not describe the different causes any better than Wikipedia does, so if you want to learn more, you should check out their [article about color blindness](#).

Dichromacy



Original Color

132.5360, -22.9422, 31.9789

Protanopia

131.3870, -20.4038, 11.0616

Deuteranopia

132.0790, -23.2099, 24.4867



Tritanopia

135.4710, -4.1762, 32.9129

Trichromacy



Original Color

132.5360, -22.9422, 31.9789

Protanomaly

131.6160, -21.0097, 18.7538

Deuteranomaly

132.3890, -23.3628, 26.8458

Tritanomaly

134.6360, -11.1595, 32.7682

Monochromacy



Original Color

132.5360, -22.9422, 31.9789

Achromatopsia

133.0000, 0.0000, 0.0000

Achromatomaly

132.6010, -8.1843, 11.7509

CSS Examples

Text

The CSS property to change the color of the text to YUV 132.5360, -22.9422, 31.9789 is called "color". The color property can be set on classes, ids or directly on the HTML element.

This example shows how text in the color `rgb(169, 123, 86)` looks like.

```
.text, #text, p{  
    color:rgb(169, 123, 86)  
}
```

If you want to add a text shadow in that color use the text-shadow property, you can generate a text shadow directly with our [CSS Text Shadow Generator](#).

Here you see how black text with a 4 pixel rgb(169, 123, 86) colored shadow looks like.

```
.shadow{ text-shadow: 4px 4px 2px rgb(169, 123, 86) }
```

Border

The CSS property to change the border of an element to YUV 132.5360, -22.9422, 31.9789 is called "border".

The border property can be set on classes, ids or directly on the HTML element.

This example shows the color as border, it can be applied via the CSS property "border" or "border-color".

```
.border, #border, table{ border:4px solid rgb(169, 123, 86) }
```


If only the border color should be changed use the property `border-color`.

```
.border{ border-color:rgb(169, 123, 86) }
```

If you want to add a box shadow in that color use:

Here you see how a box with a 4 pixel `rgb(169, 123, 86)` colored shadow looks like.

```
.boxshadow{ -moz-box-shadow:4px 4px 4px  
4px rgb(169, 123, 86); -webkit-box-  
shadow:4px 4px 4px 4px rgb(169, 123, 86);  
box-shadow:4px 4px 4px 4px rgb(169, 123,  
86) }
```

Background

The CSS property to change the background color of an element to YUV 132.5360, -22.9422, 31.9789 is called "background". The background property can be set on classes, ids or directly on the HTML element.

```
.background, #background, body{  
background: rgb(169, 123, 86) }
```

If only the background color should be changed can be used:

```
.background{ background-color: rgb(169,  
123, 86) }
```

This example shows the color as background, it is applied via the CSS property "background".

To optimize and compress your CSS code, you can use our [online CSS compressor and optimizer](#) based on csstidy. If you want to create a linear or radial gradient as background or border, check our [CSS Gradient Generator](#).

Hey! You found this booklet interesting? Support Converting Colors with the new Membership Option!

The pro membership hides all ads, plus gives you double the colors in the color bucket, and more awesome pro features!

[Learn more, Memberships starting at \\$2.50/m!](#)

**Follow me
on Twitter!**

@ConvertingColor