

Converting Colors

YUV(132.6080, -12.1317,
17.8838)

Have a look what the booklet for
YUV(132.6080, -12.1317, 17.8838)
contains.

YUV(132.6080, -12.1317, 17.8838)	3
<i>Conversions</i>	4
<i>Details</i>	6
<i>Harmonies</i>	12
<i>Previews</i>	24
<i>Color Blindness Simulation</i>	28
<i>CSS Examples</i>	31

Color

**YUV(132.6080, -12.1317,
17.8838)**

Conversions

Conversions Part 1

Format	Color
Hex	997F6C
RGB	153, 127, 108
RGB Percent	60%, 50%, 42%
CMY	0.4000, 0.5020, 0.5765
CMYK	0.00, 0.17, 0.29, 0.40
HSL	25°, 18%, 51%
HSV	25°, 29%, 60%
XYZ	23.4330, 23.0338, 17.3983
YIQ	132.6080, 21.5950, -0.3970

Conversions

Conversions Part 2

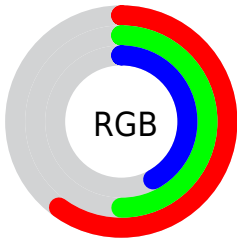
Format	Color
R_{YB}	153, 141, 108
Decimal	10059628
CIE _{Lab}	55.11, 7.02, 14.07
CIE _{LCh}	55, 15.726, 63.467
Yxy	23.0338, 0.3669, 0.3607
Android (android.graphics.Color)	4288249708 (0xFF997F6C)
YUV	132.6080, -12.1317, 17.8838
Hunter-Lab	47.9935, 3.1647, 12.1021

Details

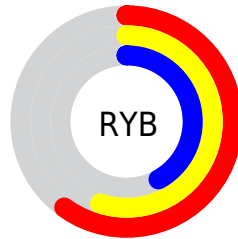
The YUV color $132.6080, -12.1317, 17.8838$ is a dark color, and the websafe version is hex 996666 . A complement of this color would be $128.3920, 12.1317, -17.8838$, and the grayscale version is $133.0000, 0.0000, 0.0000$.

A 20% lighter version of the original color is $185.9780, -13.3002, 19.3133$, and $82.9390, -10.8159, 15.8395$ is the 20% darker color. If you saturate the color by 10%, you get $125.6150, -16.0792, 24.0166$, and if you desaturate by 10%, it is $139.6010, -8.1843, 11.7509$.

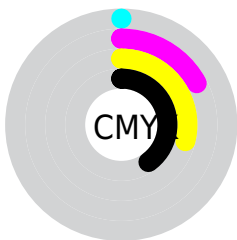
Distribution



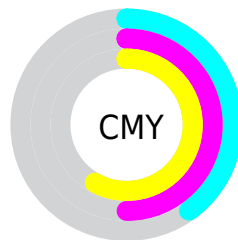
- Red (60%)
- Green (50%)
- Blue (42%)



- Red (60%)
- Yellow (55%)
- Blue (42%)



- Cyan (0%)
- Magenta (17%)
- Yellow (29%)
- Black (40%)



- Cyan (40%)
- Magenta (50%)
- Yellow (58%)

Brightness & Saturation Gradients

These gradients show how the YUV color 132.6080, -12.1317, 17.8838 changes by changing the brightness by 10 percent. The first figure shows a shift by +10% for each color and the second figure -10%.

Similar to the brightness gradients but the following saturation gradients show a change of the YUV color 132.6080, -12.1317, 17.8838 by changing the saturation by 10% instead.

■ 132.6080,
-12.1317, 17.8838

■ 132.6080,
-12.1317, 17.8838

■ 255.0000, 0.0000,
0.0000

■ 107.4230,
-11.5475, 17.1690

■ 185.9780,
-13.3002, 19.3133

■ 82.9390, -10.8159,
15.8395

■ 213.2770,
-13.4476, 19.9281

■ 59.4550, -10.0843,
14.5100

■ 238.5860,
-12.1209, 14.3951

■ 37.8570, -9.7895,
13.2804

■ 253.6320, -5.2416,
1.1997

■ 16.6120, -8.1897,
13.4953

■ 0.0000, 0.0000,
0.0000

■ 132.6080,
-12.1317, 17.8838

■ 132.6080,
-12.1317, 17.8838

■ 125.6150,
-16.0792, 24.0166

■ 139.6010, -8.1843,
11.7509

■ 118.5080,
-20.4634, 30.2495

■ 146.7080, -3.8000,
5.5181

■ 111.5150,
-24.4109, 36.3823

■ 153.7010, 0.1474,
-0.6148

■ 105.1090,
-28.6477, 42.0004

■ 160.1070, 4.3842,
-6.2328

■ 98.1160, -32.5952,
48.1333

■ 167.2140, 8.7685,
-12.4657

■ 91.0090, -36.9794,
54.3661

■ 174.2070, 12.7159,
-18.5985

■ 84.0160, -40.9269,
60.4990

■ 181.2000, 16.6634,
-24.7314

■ 83.9020, -41.3637,

■ 188.1930, 20.6109,

60.5989

-30.8643

■ 195.3000, 24.9951,
-37.0971

Harmonies

Analogous

The Analogous color harmony consists of three colors that are next to each other on the color wheel.



134.0800, -7.9274, 22.7318



132.6080, -12.1317, 17.8838



131.0260, -12.8308, 8.7472

Triad

The Triadic color harmony groups three colors that are evenly spaced from another and form a triangle on the color wheel.



132.6080, -12.1317, 17.8838



126.9430, 2.9861, -24.5060



133.4700, 10.6143, 2.2188

Complementary

The Complementary color scheme is a pair of colors which are on the opposite of each other on the color wheel.



132.6080, -12.1317, 17.8838



128.3920, 12.1317, -17.8838

Split Complementary

Split-complementary colors differ from the complementary color scheme. The scheme consists of three colors, the original color and two neighbors of the complement color.



131.4790, 13.5679, -11.8211



132.6080, -12.1317, 17.8838



126.6420, 9.5435, -27.7500

Square

The Square scheme is like the rectangle color scheme, but the four colors are evenly spaced on the color wheel.



132.6080, -12.1317, 17.8838



128.0490, -4.4612, -15.8290



129.0000, 13.3110, -22.8020



134.3530, 4.7560, 14.5994

Rectangle

The Rectangle color scheme consists of four colors that form a rectangle on the color wheel.



132.6080, -12.1317, 17.8838



130.0250, -11.3513, 0.8551



129.0000, 13.3110, -22.8020



132.7900, 11.9355, -1.5698

Sweetspot

The Sweet Spot groups the original color and five complimentary colors.



132.6080, -12.1317, 17.8838



191.0780, -4.9685, 6.9476



124.4190, 4.7234, 25.0655



94.3380, -2.6316, 4.0886



227.0000, 0.0000, 0.0000



99.0000, 0.0000, 0.0000

Same Dimension

The Same Dimension uses a secret algorithm to generate beautiful new colors.



132.6080, -12.1317, 17.8838



167.5400, -19.0002, 27.5904



145.5220, -18.4983, 6.5582



73.1530, -2.0474, 3.3738



76.4930, -37.7110, 55.6956



6.8220, -3.3632, 5.4181

Inverse Universe

The Inverse Universe completely reimagines the original color for something new.



128.3920, 12.1317, -17.8838



161.0470, 18.7108, -28.1052



115.4780, 18.4983, -6.5582



72.2600, 2.3368, -2.8590



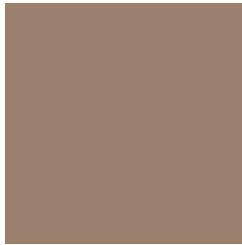
63.5070, 37.7110, -55.6956



5.5910, 3.6526, -4.9033

Previews

White Background



This preview shows how the YUV color 132.6080, -12.1317, 17.8838 looks on a white background.

Color Contrast Check

Large Text (above 18pt) WCAG AA ✓ Pass

Any Text WCAG AA × Fail

Large Text (above 18pt) WCAG AAA × Fail

Any Text WCAG AAA × Fail

Black Background



This preview shows how the YUV color 132.6080, -12.1317, 17.8838 looks on a black background.

Color Contrast Check

Large Text (above 18pt) WCAG AA ✓ Pass

Any Text WCAG AA ✓ Pass

Large Text (above 18pt) WCAG AAA ✓ Pass

Any Text WCAG AAA × Fail

If you want to check with other color combinations, try the [Color Contrast Checker](#).

YUV 132.6080, -12.1317, 17.8838

Background



This preview shows how black text looks on a background with the YUV color 132.6080, -12.1317, 17.8838.



This preview shows how white text looks on a background with the YUV color 132.6080, -12.1317, 17.8838.

Color Blindness Simulation

Color vision deficiency is a very complex topic, and I could not describe the different causes any better than Wikipedia does, so if you want to learn more, you should check out their [article about color blindness](#).

Dichromacy



Original Color

132.6080, -12.1317, 17.8838

Protanopia

131.5850, -10.6414, 6.5030

Deuteranopia

132.6080, -12.1317, 17.8838



Tritanopia

134.0070, -0.4965, 19.2879

Trichromacy



Original Color

132.6080, -12.1317, 17.8838

Protanomaly

131.7920, -11.2365, 10.7064

Deuteranomaly

132.6080, -12.1317, 17.8838

Tritanomaly

133.2690, -4.5696, 19.0581

Monochromacy



Original Color

132.6080, -12.1317, 17.8838

Achromatopsia

133.0000, 0.0000, 0.0000

Achromatomaly

132.8930, -4.3842, 6.2328

CSS Examples

Text

The CSS property to change the color of the text to YUV 132.6080, -12.1317, 17.8838 is called "color". The color property can be set on classes, ids or directly on the HTML element.

This example shows how text in the color `rgb(153, 127, 108)` looks like.

```
.text, #text, p{  
    color:rgb(153, 127, 108)  
}
```

If you want to add a text shadow in that color use the text-shadow property, you can generate a text shadow directly with our [CSS Text Shadow Generator](#).

Here you see how black text with a 4 pixel rgb(153, 127, 108) colored shadow looks like.

```
.shadow{ text-shadow: 4px 4px 2px rgb(153, 127, 108) }
```

Border

The CSS property to change the border of an element to YUV 132.6080, -12.1317, 17.8838 is called "border".

The border property can be set on classes, ids or directly on the HTML element.

This example shows the color as border, it can be applied via the CSS property "border" or "border-color".

```
.border, #border, table{ border:4px solid rgb(153, 127, 108) }
```


If only the border color should be changed use the property `border-color`.

```
.border{ border-color:rgb(153, 127, 108) }
```

If you want to add a box shadow in that color use:

Here you see how a box with a 4 pixel `rgb(153, 127, 108)` colored shadow looks like.

```
.boxshadow{ -moz-box-shadow:4px 4px 4px  
4px rgb(153, 127, 108); -webkit-box-  
shadow:4px 4px 4px 4px rgb(153, 127, 108);  
box-shadow:4px 4px 4px 4px rgb(153, 127,  
108) }
```

Background

The CSS property to change the background color of an element to YUV 132.6080, -12.1317, 17.8838 is called "background". The background property can be set on classes, ids or directly on the HTML element.

```
.background, #background, body{  
background: rgb(153, 127, 108) }
```

If only the background color should be changed can be used:

```
.background{ background-color: rgb(153,  
127, 108) }
```

This example shows the color as background, it is applied via the CSS property "background".

To optimize and compress your CSS code, you can use our [online CSS compressor and optimizer](#) based on csstidy. If you want to create a linear or radial gradient as background or border, check our [CSS Gradient Generator](#).

Hey! You found this booklet interesting? Support Converting Colors with the new Membership Option!

The pro membership hides all ads, plus gives you double the colors in the color bucket, and more awesome pro features!

[Learn more, Memberships starting at \\$2.50/m!](#)

**Follow me
on Twitter!**

@ConvertingColor