

# Converting Colors

YUV(132.7160, -8.7340,  
94.9651)

Have a look what the booklet for  
YUV(132.7160, -8.7340, 94.9651)  
contains.

<b>YUV(132.7160, -8.7340, 94.9651)</b> .....	3
<b><i>Conversions</i></b> .....	4
<b><i>Details</i></b> .....	6
<b><i>Harmonies</i></b> .....	12
<b><i>Previews</i></b> .....	24
<b><i>Color Blindness Simulation</i></b> .....	28
<b><i>CSS Examples</i></b> .....	31

# Color

**YUV(132.7160, -8.7340,  
94.9651)**

# Conversions

## Conversions Part 1

Format	Color
Hex	F15173
RGB	241, 81, 115
RGB Percent	95%, 32%, 45%
CMY	0.0549, 0.6824, 0.5490
CMYK	0.00, 0.66, 0.52, 0.05
HSL	347°, 85%, 63%
HSV	347°, 66%, 95%
XYZ	42.3126, 25.8234, 18.9740
YIQ	132.7160, 84.4460, 44.4940

# Conversions

## Conversions Part 2

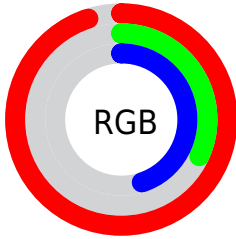
<b>Format</b>	<b>Color</b>
R <sub>Y</sub> B	241, 81, 115
Decimal	15815027
CIE Lab	57.87, 63.38, 15.65
CIE LCh	58, 65.283, 13.870
Yxy	25.8234, 0.4857, 0.2964
Android (android.graphics.Color)	4294005107 (0xFFFF15173)
YUV	132.7160, -8.7340, 94.9651
Hunter-Lab	50.8168, 59.6986, 13.4340

# Details

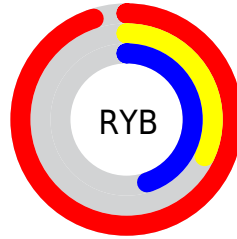
The YUV color **132.7160, -8.7340, 94.9651** is a light color, and the websafe version is hex **CC3366**. The color can be described as light muted rose. A complement of this color would be **189.2840, 8.7340, -94.9651**, and the grayscale version is **133.0000, 0.0000, 0.0000**.

A 20% lighter version of the original color is **176.8760, -4.8689, 68.5147**, and **61.7460, 2.5902, 102.8318** is the 20% darker color. If you saturate the color by 10%, you get **116.4620, -10.0878, 109.2198**, and if you desaturate by 10%, it is **148.9700, -7.3802, 80.7103**.

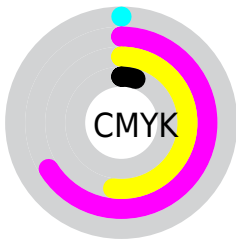
# Distribution



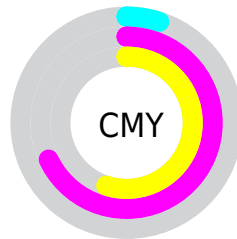
- Red (95%)
- Green (32%)
- Blue (45%)



- Red (95%)
- Yellow (32%)
- Blue (45%)



- Cyan (0%)
- Magenta (66%)
- Yellow (52%)
- Black (5%)



- Cyan (5%)
- Magenta (68%)
- Yellow (55%)

# Brightness & Saturation Gradients

These gradients show how the YUV color 132.7160, -8.7340, 94.9651 changes by changing the brightness by 10 percent. The first figure shows a shift by +10% for each color and the second figure -10%.

Similar to the brightness gradients but the following saturation gradients show a change of the YUV color 132.7160, -8.7340, 94.9651 by changing the saturation by 10% instead.



132.7160, -8.7340,  
94.9651

132.7160, -8.7340,  
94.9651

255.0000, 0.0000,  
0.0000

102.5140, -5.6764,  
94.2652

176.8760, -4.8689,  
68.5147

61.7460, 2.5902,  
102.8318

196.3900, -1.1783,  
51.4010

49.7950, -1.8709,  
87.0028

216.6050, 2.6597,  
33.6724

38.2460, -6.0373,  
69.9443

237.4070, 6.2083,  
15.4291

26.7250, -12.6824,  
54.6152

18.5810, -7.6814,  
37.2015

6.8770, -3.3904,

14.1399

■ 0.0000, 0.0000,  
0.0000

■ 132.7160, -8.7340,  
94.9651

■ 132.7160, -8.7340,  
94.9651

■ 116.4620,  
-10.0878, 109.2198

■ 148.9700, -7.3802,  
80.7103

■ 100.2080,  
-11.4415, 123.4746

■ 165.2240, -6.0264,  
66.4556

■ 83.9540, -12.7953,  
137.7293

■ 181.4780, -4.6727,  
52.2008

■ 77.8730, -13.2484,  
143.0624

■ 197.7320, -3.3189,  
37.9460

■ 214.5730, -2.2545,  
23.1765

230.8270, -0.9007,  
8.9217

247.0810, 0.4531,  
-5.3330

250.8140, 2.0637,  
-8.6069

# Harmonies

## Analogous

The Analogous color harmony consists of three colors that are next to each other on the color wheel.



137.6640, 16.9276, 77.4707



132.7160, -8.7340, 94.9651



133.6410, -35.3190, 81.8758

# Triad

The Triadic color harmony groups three colors that are evenly spaced from another and form a triangle on the color wheel.



132.7160, -8.7340, 94.9651



120.1700, -35.0868, -39.6141



118.7840, 64.1965, -104.1736

# Complementary

The Complementary color scheme is a pair of colors which are on the opposite of each other on the color wheel.



132.7160, -8.7340, 94.9651



189.2840, 8.7340, -94.9651

# Split Complementary

Split-complementary colors differ from the complementary color scheme. The scheme consists of three colors, the original color and two neighbors of the complement color.



120.4190, 47.6144, -105.6075



132.7160, -8.7340, 94.9651



107.6510, -1.3069, -94.4099

# Square

The Square scheme is like the rectangle color scheme, but the four colors are evenly spaced on the color wheel.



132.7160, -8.7340, 94.9651



127.5730, -62.8935, 12.6525



115.6650, 24.3222, -101.4382



128.1690, 60.5557, -56.2762



# Rectangle

The Rectangle color scheme consists of four colors that form a rectangle on the color wheel.



132.7160, -8.7340, 94.9651



133.1660, -51.8468, 62.9984



115.6650, 24.3222, -101.4382



120.2200, 59.5445, -105.4329

# Sweetspot

The Sweet Spot groups the original color and five complimentary colors.



132.7160, -8.7340, 94.9651



220.5030, -2.7130, 30.2539



136.6150, 51.4618, 60.8506



106.9530, -1.9488, 18.4582



0.0000, 0.0000, 0.0000



128.0000, 0.0000, 0.0000



# Same Dimension

The Same Dimension uses a secret algorithm to generate beautiful new colors.



132.7160, -8.7340, 94.9651



116.8980, -11.2887, 121.1155



155.2550, -36.6077, 75.1984



111.8160, -0.8953, 7.1774



59.4620, -10.0878, 109.2198



18.1120, -3.0132, 33.2278



# Inverse Universe

The Inverse Universe completely reimagines the original color for something new.



132.7160, -8.7340, 94.9651



116.8980, -11.2887, 121.1155



166.7450, 36.6077, -75.1984



111.8160, -0.8953, 7.1774



59.4620, -10.0878, 109.2198



18.1120, -3.0132, 33.2278



# Previews

## White Background



This preview shows how the YUV color 132.7160, -8.7340, 94.9651 looks on a white background.

## Color Contrast Check

Large Text (above 18pt) WCAG AA ✓ Pass

Any Text WCAG AA × Fail

Large Text (above 18pt) WCAG AAA × Fail

Any Text WCAG AAA × Fail



# Black Background



This preview shows how the YUV color 132.7160, -8.7340, 94.9651 looks on a black background.

## Color Contrast Check

Large Text (above 18pt) WCAG AA ✓ Pass

Any Text WCAG AA ✓ Pass

Large Text (above 18pt) WCAG AAA ✓ Pass

Any Text WCAG AAA × Fail

If you want to check with other color combinations, try the [Color Contrast Checker](#).

# YUV 132.7160, -8.7340, 94.9651

## Background



This preview shows how black text looks on a background with the YUV color 132.7160, -8.7340, 94.9651.



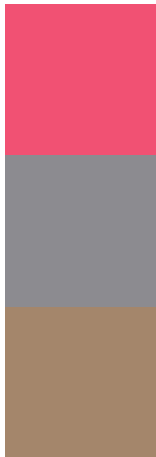
This preview shows how white text looks on a background with the YUV color 132.7160, -8.7340,



# Color Blindness Simulation

Color vision deficiency is a very complex topic, and I could not describe the different causes any better than Wikipedia does, so if you want to learn more, you should check out their [article about color blindness](#).

## Dichromacy



### Original Color

132.7160, -8.7340, 94.9651

### Protanopia

139.8690, 2.0366, 0.1149

### Deuteranopia

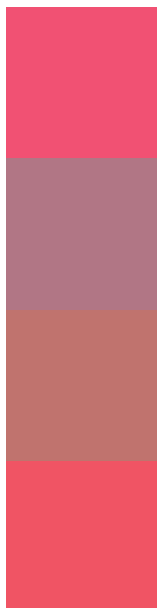
139.8920, -16.2158, 21.1427



## Tritanopia

132.6160, -20.5167, 94.1758

# Trichromacy



## Original Color

132.7160, -8.7340, 94.9651

## Protanomaly

137.3510, -2.1450, 34.7722

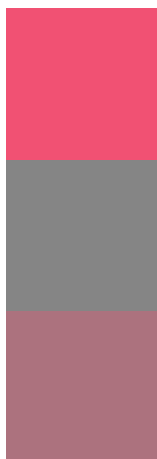
## Deuteranomaly

137.4530, -13.5343, 47.8377

## Tritanomaly

132.4680, -16.0067, 94.3056

# Monochromacy



## Original Color

132.7160, -8.7340, 94.9651

## Achromatopsia

133.0000, 0.0000, 0.0000

## Achromatomaly

132.7100, -3.3080, 34.4573

# CSS Examples

## Text

The CSS property to change the color of the text to YUV 132.7160, -8.7340, 94.9651 is called "color". The color property can be set on classes, ids or directly on the HTML element.

This example shows how text in the color `rgb(241, 81, 115)` looks like.

```
.text, #text, p{  
    color:rgb(241, 81, 115)  
}
```

If you want to add a text shadow in that color use the text-shadow property, you can generate a text shadow directly with our [CSS Text Shadow Generator](#).

Here you see how black text with a 4 pixel rgb(241, 81, 115) colored shadow looks like.

```
.shadow{ text-shadow: 4px 4px 2px rgb(241, 81, 115) }
```

## Border

The CSS property to change the border of an element to YUV 132.7160, -8.7340, 94.9651 is called "border". The border property can be set on classes, ids or directly on the HTML element.

This example shows the color as border, it can be applied via the CSS property "border" or "border-color".

```
.border, #border, table{ border:4px solid rgb(241, 81, 115) }
```



If only the border color should be changed use the property `border-color`.

```
.border{ border-color:rgb(241, 81, 115) }
```

If you want to add a box shadow in that color use:

Here you see how a box with a 4 pixel `rgb(241, 81, 115)` colored shadow looks like.

```
.boxshadow{ -moz-box-shadow:4px 4px 4px 4px rgb(241, 81, 115); -webkit-box-shadow:4px 4px 4px 4px rgb(241, 81, 115); box-shadow:4px 4px 4px 4px rgb(241, 81, 115) }
```

# Background

The CSS property to change the background color of an element to YUV 132.7160, -8.7340, 94.9651 is called "background". The background property can be set on classes, ids or directly on the HTML element.

```
.background, #background, body{  
background: rgb(241, 81, 115) }
```

If only the background color should be changed can be used:

```
.background{ background-color: rgb(241, 81,  
115) }
```

This example shows the color as background, it is applied via the CSS property "background".

To optimize and compress your CSS code, you can use our [online CSS compressor and optimizer](#) based on csstidy. If you want to create a linear or radial gradient as background or border, check our [CSS Gradient Generator](#).

Hey! You found this booklet interesting? Support Converting Colors with the new Membership Option!

The pro membership hides all ads, plus gives you double the colors in the color bucket, and more awesome pro features!

**[Learn more, Memberships starting at \\$2.50/m!](#)**

**Follow me  
on Twitter!**

@ConvertingColor