

Converting Colors

YUV(133.0660, -2.9905,
72.7331)

Have a look what the booklet for
YUV(133.0660, -2.9905, 72.7331)
contains.

YUV(133.0660, -2.9905, 72.7331)	3
<i>Conversions</i>	4
<i>Details</i>	6
<i>Harmonies</i>	12
<i>Previews</i>	24
<i>Color Blindness Simulation</i>	28
<i>CSS Examples</i>	31

Color

**YUV(133.0660, -2.9905,
72.7331)**

Conversions

Conversions Part 1

Format	Color
Hex	D85C7F
RGB	216, 92, 127
RGB Percent	85%, 36%, 50%
CMY	0.1529, 0.6392, 0.5020
CMYK	0.00, 0.57, 0.41, 0.15
HSL	343°, 61%, 60%
HSV	343°, 57%, 85%
XYZ	35.9768, 23.7855, 22.7736
YIQ	133.0660, 62.6690, 37.1730

Conversions

Conversions Part 2

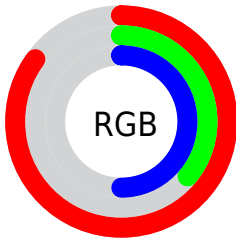
Format	Color
R _Y B	216, 92, 127
Decimal	14179455
CIE Lab	55.87, 51.89, 5.20
CIE LCh	56, 52.151, 5.721
Yxy	23.7855, 0.4359, 0.2882
Android (android.graphics.Color)	4292369535 (0xFFD85C7F)
YUV	133.0660, -2.9905, 72.7331
Hunter-Lab	48.7704, 46.3271, 6.4536

Details

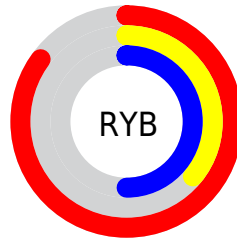
The YUV color **133.0660, -2.9905, 72.7331** is a dark color, and the websafe version is hex **CC3366**. The color can be described as middle muted rose. A complement of this color would be **174.9340, 2.9905, -72.7331**, and the grayscale version is **133.0000, 0.0000, 0.0000**.

A 20% lighter version of the original color is **183.0540, -1.5056, 63.0966**, and **76.3800, 0.7987, 70.7037** is the 20% darker color. If you saturate the color by 10%, you get **118.3280, -3.6127, 85.6583**, and if you desaturate by 10%, it is **147.8040, -2.3684, 59.8079**.

Distribution



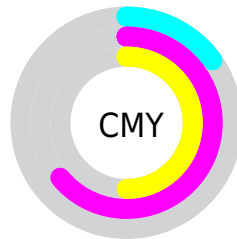
- Red (85%)
- Green (36%)
- Blue (50%)



- Red (85%)
- Yellow (36%)
- Blue (50%)



- Cyan (0%)
- Magenta (57%)
- Yellow (41%)
- Black (15%)



- Cyan (15%)
- Magenta (64%)
- Yellow (50%)

Brightness & Saturation Gradients

These gradients show how the YUV color 133.0660, -2.9905, 72.7331 changes by changing the brightness by 10 percent. The first figure shows a shift by +10% for each color and the second figure -10%.

Similar to the brightness gradients but the following saturation gradients show a change of the YUV color 133.0660, -2.9905, 72.7331 by changing the saturation by 10% instead.

 133.0660, -2.9905,
72.7331

 133.0660, -2.9905,
72.7331

255.0000, 0.0000,
0.0000


 105.3970, -1.6747,
70.6888

 183.0540, -1.5056,
63.0966


 76.3800, 0.7987,
70.7037


 202.5680, 2.1850,
45.9829


 44.6560, 5.5926,
73.0927

 222.1960, 6.3124,
28.7691

 33.7760, 0.1104,
58.0784

 241.4990, 6.6560,
11.8404

 22.8960, -5.3717,
43.0642

 13.9820, -5.9071,
28.0798

 0.0000, 0.0000,

0.0000

■ 133.0660, -2.9905,
72.7331

■ 133.0660, -2.9905,
72.7331

■ 118.3280, -3.6127,
85.6583

■ 147.8040, -2.3684,
59.8079

■ 104.2910, -4.0875,
97.9688

■ 161.8410, -1.8936,
47.4974

■ 89.5530, -4.7096,
110.8940

■ 176.5790, -1.2714,
34.5722

■ 75.5160, -5.1844,
123.2045

■ 190.6160, -0.7967,
22.2618

■ 71.5380, -5.1952,
126.6932

■ 205.3540, -0.1745,
9.3365

■ 219.9780, 0.0108,
-3.4887

■ 234.1290, 0.9224,
-15.8991

■ 242.8830, 4.0017,
-23.5764

■ 243.3390, 5.7489,
-23.9763

Harmonies

Analogous

The Analogous color harmony consists of three colors that are next to each other on the color wheel.



136.9120, 17.2984, 51.8202



133.0660, -2.9905, 72.7331



131.8380, -24.0771, 69.4251

Triad

The Triadic color harmony groups three colors that are evenly spaced from another and form a triangle on the color wheel.



133.0660, -2.9905, 72.7331



122.7690, -33.4101, -17.3374



111.5000, 51.5185, -97.7855

Complementary

The Complementary color scheme is a pair of colors which are on the opposite of each other on the color wheel.



133.0660, -2.9905, 72.7331



174.9340, 2.9905, -72.7331

Split Complementary

Split-complementary colors differ from the complementary color scheme. The scheme consists of three colors, the original color and two neighbors of the complement color.



112.1890, 36.3888, -98.3898



133.0660, -2.9905, 72.7331



105.7240, -5.2869, -77.8109

Square

The Square scheme is like the rectangle color scheme, but the four colors are evenly spaced on the color wheel.



133.0660, -2.9905, 72.7331



127.4980, -45.6015, 19.7343



107.6460, 16.4435, -94.4055



121.2150, 50.6730, -59.8246

Rectangle

The Rectangle color scheme consists of four colors that form a rectangle on the color wheel.



133.0660, -2.9905, 72.7331



131.3730, -35.6799, 57.5549



107.6460, 16.4435, -94.4055



112.3490, 47.1559, -98.5301

Sweetspot

The Sweet Spot groups the original color and five complimentary colors.



133.0660, -2.9905, 72.7331



226.2250, -1.0969, 25.2357



132.7470, 41.0437, 42.3179



110.5720, -0.7750, 15.2844



0.0000, 0.0000, 0.0000



128.0000, 0.0000, 0.0000

Same Dimension

The Same Dimension uses a secret algorithm to generate beautiful new colors.



133.0660, -2.9905, 72.7331



137.3240, -4.1037, 103.2019



144.9250, -26.0920, 62.3328



99.6310, -0.3111, 6.4626



56.6010, -4.2403, 100.3279



14.2250, -1.0969, 25.2357

Inverse Universe

The Inverse Universe completely reimagines the original color for something new.



133.0660, -2.9905, 72.7331



137.3240, -4.1037, 103.2019



163.0750, 26.0920, -62.3328



99.6310, -0.3111, 6.4626



56.6010, -4.2403, 100.3279



14.2250, -1.0969, 25.2357

Previews

White Background



This preview shows how the YUV color 133.0660, -2.9905, 72.7331 looks on a white background.

Color Contrast Check

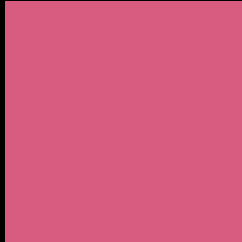
Large Text (above 18pt) WCAG AA ✓ Pass

Any Text WCAG AA × Fail

Large Text (above 18pt) WCAG AAA × Fail

Any Text WCAG AAA × Fail

Black Background



This preview shows how the YUV color 133.0660, -2.9905, 72.7331 looks on a black background.

Color Contrast Check

Large Text (above 18pt) WCAG AA ✓ Pass

Any Text WCAG AA ✓ Pass

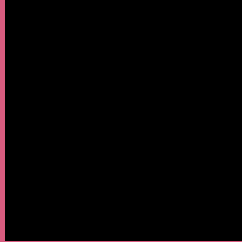
Large Text (above 18pt) WCAG AAA ✓ Pass

Any Text WCAG AAA × Fail

If you want to check with other color combinations, try the [Color Contrast Checker](#).

YUV 133.0660, -2.9905, 72.7331

Background



This preview shows how black text looks on a background with the YUV color 133.0660, -2.9905, 72.7331.



This preview shows how white text looks on a background with the YUV color 133.0660, -2.9905,

Color Blindness Simulation

Color vision deficiency is a very complex topic, and I could not describe the different causes any better than Wikipedia does, so if you want to learn more, you should check out their [article about color blindness](#).

Dichromacy



Original Color

133.0660, -2.9905, 72.7331

Protanopia

134.7530, 8.0098, -2.4144

Deuteranopia

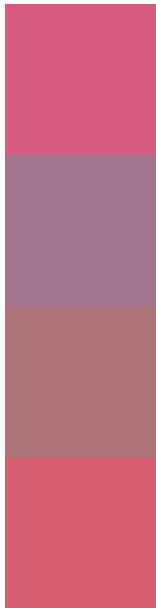
135.5520, -7.1741, 14.4249



Tritanopia

132.6670, -14.6258, 71.3290

Trichromacy



Original Color

133.0660, -2.9905, 72.7331

Protanomaly

134.1910, 3.8498, 25.2655

Deuteranomaly

134.4390, -5.6394, 35.5720

Tritanomaly

132.8180, -10.2633, 72.0736

Monochromacy



Original Color

133.0660, -2.9905, 72.7331

Achromatopsia

133.0000, 0.0000, 0.0000

Achromatomaly

132.9370, -0.9549, 26.3653

CSS Examples

Text

The CSS property to change the color of the text to YUV 133.0660, -2.9905, 72.7331 is called "color". The color property can be set on classes, ids or directly on the HTML element.

This example shows how text in the color `rgb(216, 92, 127)` looks like.

```
.text, #text, p{  
    color:rgb(216, 92, 127)  
}
```

If you want to add a text shadow in that color use the text-shadow property, you can generate a text shadow directly with our [CSS Text Shadow Generator](#).

Here you see how black text with a 4 pixel rgb(216, 92, 127) colored shadow looks like.

```
.shadow{ text-shadow: 4px 4px 2px rgb(216, 92, 127) }
```

Border

The CSS property to change the border of an element to YUV 133.0660, -2.9905, 72.7331 is called "border". The border property can be set on classes, ids or directly on the HTML element.

This example shows the color as border, it can be applied via the CSS property "border" or "border-color".

```
.border, #border, table{ border:4px solid rgb(216, 92, 127) }
```


If only the border color should be changed use the property border-color.

```
.border{ border-color:rgb(216, 92, 127) }
```

If you want to add a box shadow in that color use:

Here you see how a box with a 4 pixel rgb(216, 92, 127) colored shadow looks like.

```
.boxshadow{ -moz-box-shadow:4px 4px 4px  
4px rgb(216, 92, 127); -webkit-box-  
shadow:4px 4px 4px 4px rgb(216, 92, 127);  
box-shadow:4px 4px 4px 4px rgb(216, 92,  
127) }
```

Background

The CSS property to change the background color of an element to YUV 133.0660, -2.9905, 72.7331 is called "background". The background property can be set on classes, ids or directly on the HTML element.

```
.background, #background, body{  
background: rgb(216, 92, 127) }
```

If only the background color should be changed can be used:

```
.background{ background-color: rgb(216, 92,  
127) }
```

This example shows the color as background, it is applied via the CSS property "background".

To optimize and compress your CSS code, you can use our [online CSS compressor and optimizer](#) based on csstidy. If you want to create a linear or radial gradient as background or border, check our [CSS Gradient Generator](#).

Hey! You found this booklet interesting? Support Converting Colors with the new Membership Option!

The pro membership hides all ads, plus gives you double the colors in the color bucket, and more awesome pro features!

[Learn more, Memberships starting at \\$2.50/m!](#)

**Follow me
on Twitter!**

@ConvertingColor